



TOP.....! SCHOOL #2 TRIPS

INSIDE

RESIDENTIALS
How they change
young lives

GOING GREEN
Plan an eco day
at the zoo

**OVERSEAS
ADVENTURES**
The secret to
stress-free trips

50
VISITS KIDS
WILL LOVE

HANDS-ON HISTORY!

**GETTING TO GRIPS
WITH THE PAST**

teach
PRIMARY

DONT MISS OUT ON

25% OFF
ALL 2020*
SCHOOL TRIPS!

**BOOK BEFORE
31ST JANUARY**



GO WILD FOR...

SCIENCE

**WEEK
2020**



**30TH MARCH
TO 3RD APRIL**



**NEW TRAIL
MAY 2020**

PRICES FROM £6.75PP WITH CODE EB20*
FIND OUT MORE AT CHESSINGTON.CO.UK/SCHOOLS
CALL 0371 222 5105 TO BOOK



©1999 & 2001 TM Julia Donaldson & Axel Scheffler. Licensed by Magic Light Pictures Ltd.
*Offer valid on Primary and Secondary entry tickets only. Valid until 31.01.2020

©Orange Eyes Ltd. 2009 & 2012

Hello...

How best to enthuse pupils about their learning? Whatever the topic, I'm sure we can all agree that when it comes to teaching, it's better to show than to tell – but that still leaves educators with decisions to make. We're spoilt these days by the internet, which ensures the near sum total of human knowledge is mere search terms away; so whether you want your class to investigate animals across the globe, or explore climate change, or witness physics in action, or sample the works of Shakespeare, or search for historical artefacts, or... – well, you get the idea – you're likely covered in the classroom.

But as engaging as children might find them, computer screens will never be able to deliver an experience that compares to coming face to face with creatures and their keepers in the zoo, or watching a live performance of *A Midsummer Night's Dream* at the theatre, or seeing an exhibit up close and maybe even getting to handle it whilst on a day out at a museum – and a day away's ability to fire your pupils' curiosity like nothing else is one reason why taking them out and about is an educational tool like no other.

There are many more, of course. As you'll read about over the course of the following pages, school trips are fantastic opportunities to build confidence and boost esteem, to get children exercising in the fresh air and trying activities they might otherwise never have access too. They can give pupils a valuable taste of independence and broaden horizons in a way that can have a lifelong positive impact – and they can be beneficial for teachers too.

If you're ready to begin planning your next excursion, you'll find plenty to consider here, plus advice on how to make the very most of your time out of the classroom – we hope you find it useful!

Jacob Stow
Editor



The Experts



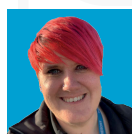
LOUISE JAYE

Schools and conservation supervisor at SEA LIFE London



ROB JAINA

Learning officer at The Silverstone Experience



TONI SAGE

Assistant brand manager – education & trade at Thorpe Park Resort



LAUREN FRANCIS

Education programme development coordinator and DSL at Cadbury World



STEVE CRAVEN

Director of NST Travel Group



HELEN ROUGHLEY

Marketing executive for Merlin Entertainments in Manchester

Editor:

Jacob Stow, jacob.stow@theteachco.com, 01206 505113

Group advertising manager:

Richard Stebbing, richard.stebbing@theteachco.com, 01206 505957

Advertising manager:

Hayley Rackham, hayley.rackham@theteachco.com, 01206 505988

Account manager:

Jake Burrington, jake.burrington@theteachco.com, 01206 505996

Account manager:

Louis Stephenson, louis.stephenson@theteachco.com, 01206 50592

Account manager:

Hannah Jones, hannah.jones@theteachco.com, 01206 505924

Group editor:

Joe Carter

Art editor:

Lloyd Oxley

Designer:

Luke Rogers, Adam Barford

Photography:

CliQQ Photography, cliqq.co.uk

Accounts:

01206 505995

Design & reprographics:

Ace Pre-Press

01206 508608

Subscriptions department:

Hollie Caldeira, hollie.caldeira@aceville.co.uk

Subscription enquiries:

0844 576 7861

Publisher:

Helen Tudor

Published by: Maze Media (2000) Ltd,
25 Phoenix Court, Hawkins Rd,
Colchester, Essex, CO2 8JY.
Tel: 01206 505900

The views in this magazine are not necessarily those of the publisher. Every effort is made to ensure the veracity and integrity of the companies, persons, products and services mentioned in this publication, and the details given are believed to be accurate at the time of going to press. However, no responsibility or liability whatsoever can be accepted for any consequence or repercussion of responding to information or advice given or inferred.
Copyright Maze Media (2000) Ltd.

Contents

Features

6 IDEAS & INSIGHTS

New workshops and research, plus expert advice and topical comment.

14 TEACHING WITH CREATURES

Animal encounters can enthuse learners and boost their knowledge across the curriculum, says Louise Jaye.

22 WHAT YOUR GROUP WILL GAIN FROM A WORKSHOP

Are expert-led sessions worth the expense? Rob Jaina explains why spending a bit more can significantly boost educational impact.

33 LET THE LEARNING COME TO YOU

Bringing workshops into school is a fantastic alternative to a day away, say Sam Bryan and Joseph Parsonage.

40 “SHOW THEM STEM IN ACTION”

It's hard to engage students in science, technology, engineering and maths, but the right trip can spark a passion that will last a lifetime, says Toni Sage.

48 ENGAGED AND LEARNING

Lauren Francis explains how attractions are ensuring learners enjoy exciting and interactive school trips.

52 “RESIDENTIALS CAN BE TRANSFORMATIONAL”

Taking pupils away for several days can have a profoundly beneficial impact, as the School Journey Association explains.

62 TEACH THEM TO BE GREEN

Your local zoo is the perfect place to instil environmental awareness, says Holly Bestley.

66 8 WAYS TO PLAN A STRESS-FREE TRIP OVERSEAS

Organising an adventure abroad is more daunting than booking a day at the zoo – but help is available, says Steve Craven.

70 WHY A GREAT TRIP WILL BOOST WELLBEING

Don't underestimate the potential of educational visits to boost communication skills and promote emotional health, says Helen Roughley.

80 STEPPING BACK IN TIME

You're spoilt for choice when planning a history-linked school trip – but here are six of our favourites.

82 7 SCHOOL TRIPS YOU MIGHT NOT HAVE CONSIDERED

Reject the traditional and offer your pupils something they weren't expecting...

Partner content

9 CHESSINGTON WORLD OF ADVENTURES

From thrilling rides to wild animals and free resources, the opportunities are endless...

17 A LAND OF FAIRY TALES

Experience a fictional kingdom in the magical world of Shrek's Adventure! London.

18 WEST MIDLAND SAFARI PARK

Discover a four-mile safari, feature attractions and added extras linked to the national curriculum...

19 INSIDE... FROZEN THE MUSICAL

A journey through the traditional fashion, art, culture and architecture of Norway cast a spell over the team tasked with recreating the world of Frozen for the stage...

21 ENGAGE THEIR MINDS WITH MOTORSPORT

A packed day at The Silverstone Experience will inspire children in STEM.

25 ENTER THE TOMB OF THE PHARAOH

Inspire pupils with the tale and artefacts of boy king Tutankhamun.

29 USE TECH TO INSPIRE YOUR CLASS

Visit the British Museum and uncover the past with the latest digital devices.

31 RAISING CAREER ASPIRATIONS

Visit the world of KidZania London and develop a range of workplace skills.

32 DISCOVER ANIMALS AND ARTEFACTS

Visit the award-winning Flamingo Land and explore the lives of a host of exotic creatures

35 INSIDE... TEACH REX

Sam Bryan and Joseph Parsonage's in-school workshops support learning across the curriculum.

37 EXPLORE THE OCEAN WORLD

Plan unforgettable school trips to the heart of the ocean.

42 DE HAVILLAND AIRCRAFT MUSEUM

Explore aviation history, from the wooden wonder to an autogiro.

43 THORPE PARK RESORT

Teach STEM, D&T and more alongside the thrills of world-class rides.

51 IT'S CHOC-FULL OF DISCOVERY!

Explore history, design and much more with a day out at Cadbury World.

55 SCHOOL JOURNEY ASSOCIATION

Five ideas for your primary school's next trip, at home and abroad.

61 ZSL WHIPSNADE ZOO

Samantha Viner illustrates why the UK's largest zoo is the wildest school trip destination.

65 “WITH YOU EVERY STEP OF THE WAY”

Discover a world of learning with the help of the school travel experts at NST.

69 BUILDING KEY STEM SKILLS

Invite your class to experiment with robotics, coding and more in Manchester...

73 LET'S EXPLORE, DISCOVER & PLAY!

Visit Godstone Farm and discover learning opportunities for all ages.

78 DO RESIDENTIALS STILL MATTER?

With budgets and classroom time squeezed, is there still a need for a school residential?

35 Great ideas

10 10 OF THE BEST RESIDENTIALS

Taking your pupils away for a few days can work wonders – here are some great options to consider.

26 5 OF THE BEST ANIMAL ATTRACTIONS

Find fantastic creature-themed days out for your group here...

44 10 OF THE BEST DAY TRIPS

There's lots your group can learn in a few hours beyond the classroom – if you know where to go...

56 10 INSPIRING IDEAS

Planes, trains and automobiles, fantastic workshops, rare creatures and much, much more...



BOOK NOW FOR 2020

**Connecting students to real people
and their personal stories of conflict.**

National curriculum linked learning sessions available to book
for KS2–KS4, covering topics from the First World War to today.

London | Manchester | Duxford

To find out more visit [iwm.org.uk/learning](https://www.iwm.org.uk/learning)

IDEAS & INSIGHTS

From the latest workshops and research to expert advice and topical comment, get your school trip news right here

Technology that inspires learning

The British Museum's SDDC has received an upgrade

Last September the British Museum reopened its award-winning Samsung Digital Discovery Centre (SDDC), following what it describes as a “significant upgrade”. The SDDC is based on-site in Bloomsbury and offers visiting children a state-of-the-art technological hub with which to interact with the British Museum’s extensive collection of artefacts. In 2018/19 the centre played host to some 25,000 school children and families; the refit promises improvements to cater for growing visitor numbers and a range of new technology, from the Samsung Flip to E-boards and Galaxy smartphones, tablets and smartwatches.

There has also been an expansion of the SDDC’s Virtual Visits programme, which allows schools that are unable to visit the British Museum to access it remotely via learning sessions broadcast directly into their classrooms. Following a successful pilot, the museum is now creating 35,000 places on the programme over the next five years, open to schools across Britain and Northern Ireland.

More details: Teachers can choose from a variety of free school sessions at the SDDC or take part in a self-led activity. Visit www.britishmuseum.org/learn/schools



© Benedict Johnson

“Advances in digital technology have enhanced the learning opportunities within – and now outside – the Museum.”

– HARTWIG FISCHER, DIRECTOR, BRITISH MUSEUM –

Activities to boost attainment

Pupils invited to participate in ‘Children’s University’

Children aged nine and 10 from 150 primary schools across the country are taking part in an Education Endowment Foundation-funded trial of the Children’s University programme, which aims to raise aspirations and attainment by providing learning activities and experiences outside the classroom. Every child involved receives a ‘passport to learning’ to record which activities they

participate in and for how long – activities on offer range from walking trails and gymnastics to visits to wildlife parks, sports sessions and performing arts classes. An earlier trial identified positive impacts in KS2 maths and reading.

Funding is the issue: While acknowledging the value of enrichment activities such as museum trips and visits to leisure centres, the NEU’s Dr Mary Bousted offered a sceptical view, suggesting that schools already carried them out on a regular basis. “What schools need most,” she said, “is to be adequately funded.”





Conservation on the curriculum

Conservationists aged 9–11 have completed a ‘takeover’ of Chester Zoo. The school children spent the day delivering public talks in an effort to inspire thousands of zoo visitors to take action to protect wildlife. The takeover follows a two-year partnership between Chester Zoo and the Ignite Teaching School Alliance that has embedded wildlife conservation into the curriculum in 44 schools across the UK, reaching more than 20,000 children.

PLANS TO EXPAND:

According to Chester Zoo’s Anya Moon, the plan now is to roll the scheme out across the UK and make wildlife conservation part of the curriculum nationwide.

Positive performances

Live theatre shown to benefit young children

New research has shed light on the vital role the arts play in children’s development and wellbeing. Researchers Dr Jenny Hallam and Dr Kay Owen from the University of Derby looked at the ways in which children aged three to six responded to a live performance of ‘Five’ by theatre company WinterWalker. The intervention featured stay-and-play activities and used music and dance to explore the senses. Children were observed in a play area prior to and after the 45-minute performance, to gauge its impact.

THE FINDINGS:

The researchers noted increased levels of confidence, exploration and social interaction in the play area following the performance, relative to children’s earlier visit, and the experience’s positive impact was sustained over the following weeks, with children reportedly recreating elements of the performance and incorporating its themes into their play. A follow-up research project is planned to explore the benefits further.



Do more outdoors

Educators to gather for school grounds conference

Sometimes it’s easy to forget that learning outside the classroom needn’t mean jumping on the bus; it can be as easy as stepping onto the playground or field outside your classroom window. To open minds to the possibilities, charity Learning through Landscapes (LtL) has announced it is to host an international conference on outdoor learning and play in September 2020, in partnership with the International School Grounds Alliance (ISGA) and the International Association of Nature Pedagogy (IANP). Attendees will be treated to practical workshops and sessions led by outdoor learning play experts from all over the world. LtL expect hundreds of school grounds



designers, teachers and early educators to attend.

The conference will take place 24–26 September in Stirling, Scotland. For more information or to book your place, visit www.ltl.org.uk/ISGA2020

Speakers announced:

Those sharing their insights at the conference will include IANP’s Claire Warden; headteacher David Hughes; Monash University researcher Alex Parrington; and Anders Wänge Kjellsson, an education advisor from the Naturskolan in Lund, Sweden.

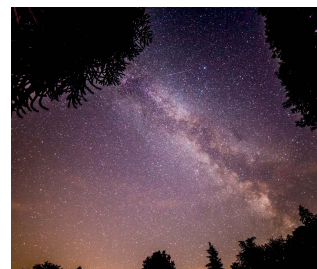
NEWS IN BRIEF

SHOW THEM THE STARS

A review into whether the protections for National Parks and AONBs are fit for purpose has published its final report (bit.do/TSTplnd).

Amongst its proposals is the call for every child to experience a “night under the stars in a national landscape”. The report’s authors stress the benefits to the mental and physical health of

young people that time spent in national landscapes can confer, and believe that all children should be “helped to develop pride” in such environments.



MATHS TAKES FLIGHT

The RAF Museum London is currently hosting Maths Alive!, a travelling interactive exhibition for 7–14-year-olds that aims to show maths’ connection to

music, sports, movies, games and more. The exhibition will close on 15 March 2020. Visit www.rafmuseum.org.uk

OFF TO THE CINEMA

In November the seventh Into Film Festival took place. It featured 150 films – focusing on themes as diverse as anti-bullying, the environment and community – showing at 600 venues across the UK, and screenings were complemented by free learning resources, talks, workshops and careers advice. Visit www.intofilm.org



www.magicoftheatre.com

M&M Theatrical Productions are totally committed to combining theatre with education, providing superb value for money productions that are innovative, magical, colourful and, most importantly, wonderfully captivating. We believe that the best way to teach children is by telling a story.

We call it **The Magic of Theatre.**



Classic Literature Adaptations



Stagecraft Workshop



Pantomimes



Teacher Resource Packs

"The sets, costumes and equipment are excellent and continue to improve if that is possible. I have been using M&M Theatrical Productions for almost 15 years now and it seems that every year the productions get better and better."

6 THINGS TO DO AT...

Chessington



From thrilling rides and team-building activities to wild animals and fantastic free resources, the opportunities for excitement and education are endless...

BOOK NOW!

Planning an educational visit to Chessington World of Adventures Resort? Don't delay – schools benefit from exclusive pricing year round.

1 Wild rides

Trek into the Wild Woods at Chessington and fly like a bat on Vampire, then venture to the mythical Land of the Dragons and soar like a winged beast on Dragon's Fury. Travel to Wild Asia where you can slither like a snake on Kobra, or swing like a monkey on Monkey Swinger. In the Forbidden Kingdom delve into Pharaoh's tomb and face spiders and skeletons in your quest on Tomb Blaster!

2 Animal encounters

At Chessington your pupils will come face to face with over 1,000 exotic animals, amongst them Asiatic lions, Amur tigers, Clouded leopards, Western Lowland gorillas, Spider monkeys, reindeer, Humboldt penguins and California sea lions. And that's not all – you can also choose for your group to head out on ZUFARI, a wild safari expedition that will see them roam with Southern White rhinos and gallop with Rothschild's giraffes.



3 Under the sea

Take your class on an underwater adventure at Chessington's SEA LIFE centre, with its interactive rock pools, walk-through ocean tunnel, daily talks and feeding sessions. Discover an array of intriguing creatures, amongst them seahorses, jellyfish, rays and many more. Inspirational for all key stages, the SEA LIFE centre is sure to excite the imagination as pupils learn all about fascinating aquatic ecosystems and vital marine conservation efforts.

4 Britain's wildest classroom

There are over a dozen workshops to choose from at Chessington, so you're sure to find one that's just right for your class. Take your pupils on their wildest lesson yet as you roam the Wanyama Village alongside Rothschild's giraffes and Grévy's zebras, or partake in an exhilarating journey through the design, forces and science behind big rollercoasters. Whatever subject you want to focus on, it is covered here.



5 Go ape

Located next to Chessington's Explorer Glamping site, Go Ape offers school groups an outdoor team-building experience like no other! Step out of the classroom and watch your pupils' confidence grow as they zip, swing and jump through the treetops and complete teamwork challenges with their peers. Make sure you get in touch with the Chessington Go Ape Team, who can create bespoke packages tailored to the needs of your group.

6 Take to the trail

You can download Chessington's free teacher resources ahead of any visit and take your class on an amazing educational trail throughout the Theme Park and Zoo. Challenge your pupils as they work to uncover the secrets behind the most thrilling rides or explore fun facts and activities as they venture bravely through Trail of the Kings, where lions await...

10 OF THE BEST

RESIDENTIALS

Taking your pupils away for a few days can work wonders for their social skills and their academic learning – here are some great options to consider...

1 Manor House & Ashbury Hotels

The Manor House & Ashbury Hotels, in the heart of Devon, offer a fantastic choice of over 50 sport, craft, leisure and spa activities. A dedicated schools coordinator can create a bespoke programme to meet your group's individual requirements, plus all equipment and use of facilities is included in the price. All sessions are delivered by experienced tutors with a child-led approach. With workshops, accommodation, full-board dining and generous group discounts you're guaranteed a great value break that ticks every box.

Call **0800 955 0242** or visit www.sportscraftandgolfhotels.com



2 Rock UK

Rock UK has been working with schools for nearly 100 years. Its four nationwide activity centres offer tailor-made programmes of challenging activities to build resilience, confidence and independence – you can choose from over 40 instructed activities, from watersports to abseiling, bush craft to archery and much more. All centres hold the LOTC quality badge, testament to the company's high standards for safety, activity provision and learning outcomes. Bursary places are available for children who would otherwise be left behind.

Breaks start from only £89 per person – to start planning your next school residential, visit www.rockuk.org or call **0844 8000 222**.



MONEY WORRIES
Rock UK can offer bursaries to support students aged 6–18 who are not able to afford the cost of a visit – head to the website to apply.



3 Ringsfield Hall

Ringsfield Hall is an innovative centre for outdoor learning and nature connection, with 14.5 acres of woods, meadow and a homely Victorian house. On offer are crafted forest school and earth education programmes, infused with imagination, drama and magic, all delivered by experienced practitioners with a child-led and eco-therapeutic approach. You can opt for a day visit or residentials, with facilities including an art barn, music studio and sports pitches. Other highlights include farm animals, fantastic home-cooked food and the freedom to explore!

Visit www.ringsfield-hall.co.uk or call 01502 713 020 for availability. Discounted rates are available for autumn and winter residentials.

4 Go Wild Adventures

Bring your students out of the classroom and immerse them in the great outdoors at Go Wild Adventures. Go Wild's philosophy is that great things can happen in young people's lives when their horizons are widened, and its team will work to help you achieve this. Pupils are invited to embrace living under canvas and inspired to explore the world around them. With campfires, woodlands, fields and an on-site field study classroom on offer, Go Wild can help you put together a package to suit your specific needs.

To find out more, visit www.gowildadventures.co.uk



LOTS TO SEE

With beaches, castles, botanical gardens and more all within close distance, Go Wild can help you whatever your educational aims.



5 Cumulus Outdoors

Cumulus offers action-packed residential programmes on the stunning Jurassic coast in Dorset, tailored to your requirements and fully supported by a team who will guide you every step of the way. You can choose either the exclusive Tented Village option for an authentic outdoor experience – featuring 24/7 pastoral care, spacious tents, a large communal tipi and dedicated teachers area – or the Residential Centre for dormitory accommodation, plus dedicated teacher and classroom facilities. Programmes can include coasteering, a visit to a waterpark, a mud run, kayaking, mackerel fishing, rock climbing and abseiling, and more.

For details, call 01929 555 111 or visit www.cumulusoutdoors.com

// OVERNIGHT STAYS

OUTDOOR EXPERTISE

YHA has been working with young people since 1930. Today over 80 of its sites (and counting!) have LOTC accreditation.



6 YHA School Trips

Whatever your subject and whatever your desired learning objectives, when you choose YHA School Trips you can be assured of a safe, fulfilling and unforgettable residential that will stay with your pupils long after their coach journey home. What's more, as a leading youth charity YHA believes that every child should have the same chance to discover, explore and grow – to that end it creates unique opportunities for young people from all backgrounds to experience amazing places, share extraordinary journeys and take a different path through life.

For more information, visit www.groups.yha.org.uk or call 0800 0195 465.



7 TYF

TYF has been running for over 30 years, delivering adventure residential trips for schools. Pupils are taken out of the confines of the classroom and immersed in adventurous and experiential learning in the natural world. Its core activities are coasteering (which it pioneered in 1986), surfing, climbing and abseiling, and kayaking. The programmes link adventure and problem solving, helping pupils to find meaning and inspiration whilst building the 'backpack skills' for a lifetime of adventurous play.

For more information, visit www.tyf.com, email learn@tyf.com or call 01437 721 611.



8 Mill on the Brue

Mill on the Brue Outdoor Activity Centre boasts over 40 activities in the idyllic river valley in Bruton, Somerset. Each programme is individually written in consultation with the party leader, who can choose activities based around team-building, problem-solving, high energy or just plain fun, with experienced and qualified instructors who stay with the group throughout the week. Food is also an important part of the trip, with child-friendly meals and all diets catered for. Children are taught about the environment and teamwork, and gain a comprehension of healthy living and life skills.

Visit www.millonthebrue.co.uk

9 The School Journey Association

The School Journey Association (SJA)'s activity trips are suitable for all age groups and are a fantastic way to motivate pupils, whilst teaching them independence, self-belief and many other important life skills. They offer both day and residential trips to accredited activity centres throughout the UK and France, as well as visits to Belgium and Spain. The SJA also offers funding of £50 to all FSM children, plus additional funding of up to 50% towards the cost of trips for disadvantaged pupils.

To find out more about what's on offer, call **020 8675 6636**, email office@sjatours.org or visit www.sjatours.org



DID YOU KNOW?
NST was set up by a maths teacher in Lancashire in 1967. In 2019 it was awarded the Feefo Gold Trusted Service Award.



10 NST

NST has been creating tours that inspire and educate children for more than 50 years. Its destinations are chosen with primary school groups in mind, with safe, secure accommodation options and a range of engaging visits providing an ideal introduction to the world outside the classroom. It's the travel company of choice for over 35,000 group leaders, and NST is committed to doing its absolute best to provide schools with the experience and support they need to create a trips pupils will remember long after they return to the classroom.


Find out more at www.nstgroup.co.uk



Teaching with CREATURES

Animal encounters of every type have the power to enthuse your learners and boost their knowledge across the curriculum...

LOUISE JAYE



School trips are exciting for everyone, from the children venturing out to an unfamiliar learning environment, to the teachers and parents who get to see the wonder on their faces as they experience what's on offer. Often a trip may initially be booked as a treat or an incentive, but they are huge learning opportunities too, and nowhere is this truer than at the zoo, aquarium or safari park...

Covering the curriculum

Finding engaging ways to teach science, maths, English and geography can be really challenging. There are plenty of topics where you may think, "How am I going to teach that?!" (think 'the life cycle of a frog', 'layers of the rainforest', 'animal adaptation' or 'plastic pollution'). This is where school trips come in. Aquariums, zoos and safari parks may not pop into your mind instantly when thinking about these topics, but how better to immerse

pupils in their learning than to place them in front of a jellyfish display and get them to compare it to a plastic bag! These engaging visual experiences are key to learning development.

Learning experiences

Let's take a minute to think about how we can adapt our learning experiences in real life. For example, consider getting up-close and personal with a cockroach – yes, a cockroach. Although your initial thoughts might be *Ew!* and *Yuck!* observing these creatures is a fascinating way of exploring habitats and adaptation.

I speak from experience, as SEA LIFE London Aquarium offers children the opportunity to analyse Madagascan hissing cockroaches and their bodies in Rainforest Habitats sessions. Imagine hearing the word 'exoskeleton' for the first time; is it really that easy to picture a skeleton on the outside of an animal's body? But what if the first time you heard the word exoskeleton was when you were watching a Madagascan hissing cockroach and seeing the little segments of its body moving side to side on a member of the education team's hand? Similarly, understanding how a creature moults can be a really complex topic to talk about, but if a pupil is holding a frame containing a Goliath birdeater's moult or a snake shed? These are memorable experiences, and memorable experiences are how learning can be made exciting and fun.

That's not all, of course. When pupils see these creatures

(often for the first time) it encourages them to use their imaginations and start to think outside the box, which lends itself to learning across many other areas of the curriculum.

Going deeper


Working at SEA LIFE London Aquarium, it's fantastic to see visiting pupils in awe of a coral polyp, or acting out the carbon cycle. You may think that sounds a bit advanced for children in KS1 and KS2, but good workshops provide a unique opportunity to extend learning, allowing you to delve into topics in a way that isn't possible in class time. They also provide children with the opportunity to learn something new and then apply it to their surroundings. They can really take a school trip to the next level.

Many aquariums, zoos and safari parks can also provide you with educational resources to use prior to your arrival. Some even provide a complete set of lesson plans to use in the lead up to the big day, highlighting topics that the attraction may focus on. These are a great way to maximise the impact of your trip, so make sure you check the website of the attraction you are visiting.

In practice

Whether you are teaching KS1 or KS2, there are plenty of ways in which a school trip can support or even introduce a topic. The curriculum includes the concept of identifying animals or recognising what it means to classify, and simple observation activities can be very effective at the aquarium, zoo or safari park, giving a solid basis to practical

“Many aquariums, zoos and safari parks can provide you with educational resources to use prior to your arrival”





science. By way of example, I've used the topic of adaptation to do a quick run-through of what you may want to consider on a trip to one of these attractions...

Exploring 'Adaptation'

Adaptation is a concept that may seem quite foreign to a child. The fact that animals' bodies have adapted to where they live probably sounds like utter nonsense! But let's look at how we can aid their understanding through an experience at an aquarium, zoo or safari park.

Arriving at one of these attractions you may have already delivered a pre-visit session at school to introduce some of the different animals pupils may encounter on their visit. On the day, you may want to focus on specific creatures they should look out for, or you may be using the trip as an initial introduction to the topic. Either way, ensure you have looked at the attraction's teacher resources as you may find there are useful worksheets available. For example, pupils could be given a handout highlighting animals of interest – all of which have specific adaptations. You might pose pupils simple questions like,

'Is the animal easy to see?' or 'What do you think the animal is good at?' These will likely initiate responses such as 'the octopus was good at camouflaging itself'.

A workshop can then help to evaluate pupils' observations and cover key words they have associated with the topic. For example, at SEA LIFE London Aquarium, many pupils focus specifically on penguins and seahorses and their adaptations, culminating in an activity where they create their own animal. Here they use their experience of the day to come up with various reasons for the different adaptations they have given to their animal. Not only does this session reinforce their scientific knowledge, it provides an opportunity to practise skills such as presentation and teamwork.

Closing thoughts

Learning outside the classroom is such a valuable and memorable experience for all children – and providing close-up encounters with creatures from around the world, in particular, is an opportunity they may never have in a normal environment. As educators, our priority is the quality of the learning that our students experience during our time with them, and I'm certain that well-planned trips to zoos, aquariums and safari parks have many long-term benefits and that they will leave a lasting impression on both yourselves and your pupils.

PLAN YOUR TRIP IN NINE STEPS

- Choose your location.
- Look through the workshop offerings and decide if you want to opt for a workshop.
- Book your date and time.
- Check out the attraction's website for any resources that may support learning before, during or after the trip.
- Liaise with the attraction regarding any questions you may have.
- Complete your planning trip. Use online guidelines to help you regarding risk assessments (many attractions will have basic guidelines to aid your planning trip).
- Use lesson plan resources to prepare your class for the big day. This may mean completing a pre-trip lesson.
- Make your visit to the chosen attraction!
- Complete a post-trip lesson to evaluate information learnt on the trip.



Louise Jaye is schools

and conservation supervisor at SEA LIFE London Aquarium. Visit www.visitsealife.com/london



SEA★LIFE

London Aquarium

Today's lesson will be...

...a deep dive into the natural wonders of the World



EDUCATIONAL VISITS FROM £6 PER PUPIL. WORKSHOPS £2 PER PUPIL.
BOOK NOW www.visitsealife.com/london/schools



The London Eye



SEA★LIFE
London Aquarium

MERLIN
SCHOOLS
LONDON

See www.visitsealife.com/london/ for full terms. Pricing correct at time of going to print.
©2020 DreamWorks Animation L.L.C.

EVERY MAGICAL MINUTE

Welcome to a land of fairy tales

Experience a fictional kingdom first-hand in the magical, immersive world of Shrek's Adventure! London



10.15am

It is time to fly to Far, Far Away! Arrive at the box office to collect your tickets and check in.

10.30am

Following a security check, head to the departure lounge where our head tour guide will meet and greet you – you are now ready to board the magical 4D flying bus! With Donkey as your driver, what could possibly go wrong... and so the adventure begins! Aided by famous fairy-tale characters, including Cinderella, Sleeping Beauty and Pinocchio, your pupils will find themselves working together to discover three magical ingredients to help find Shrek and outwit the evil Rumpelstiltskin.

11.30am

An hour venturing through Far, Far Away and becoming the hero is sure to work

up an appetite; workshop bookings are welcome to take a break in Shrek's swamp for a 30-minute picnic, so make sure you pack the sandwiches!

12pm

Before you head back to London, your pupils can reflect on the adventure with a 45-minute interactive workshop. The 'Once Upon a Time' workshop for KS1 pupils will introduce children to the concept of beginning, middle and end, and ask them to consider the characteristics of a fairy story. The KS2 'Imagining Fairy Tales' workshop, on the other hand, will encourage pupils to identify with the conflict, climax and resolution in their adventure to Far, Far Away; discuss the heroes and villains of the story, interpreting their mannerisms through role-play; and explore the role of setting in a story and how characters may react to new scenarios.



BOOK NOW

Your pupils can play the leads in a live fairy-tale adventure, meet well-known characters, speak to them and change their fates.

1pm

As you arrive back, take your photo with Shrek and meet his DreamWorks friends in the arrivals lounge. Look around the circus at Madagascar, learn Kung Fu with Po, and visit the Hidden World to meet the legendary Light Fury!

{ 3 FREE LESSON PLANS }

LESSON 1

The first of two pre-visit 'Building Stories' lesson plans explores what is meant by the term 'fairy tale' and asks pupils to guess the themes, plot and characters in a fairy tale.

LESSON 2

The second of the pre-visit lessons encourages pupils to identify with different types of characters and act in role as a character from a fairy tale. Now your group is ready!

LESSON 3

The magic can then be continued back in the classroom with the third lesson, which explores magical settings, and looks at what we mean by 'setting' and why it's important.

West Midland Safari Park

Discover a four-mile safari, feature attractions and curriculum-linked extras

BOOK NOW!

Arranging a trip to West Midland Safari Park is easy thanks to a dedicated booking hotline – there are no forms or deposits needed!

1 Drive-through safari

The four-mile safari brings you nose to nose with some of the most magnificent animals on earth, including rhinos, lions, giraffes, cheetahs, tigers and elephants. You can also hire a knowledgeable Safari Ranger to enhance your tour.

2 Walk-through exhibits

There's plenty to do on foot too. Visit the Discovery Trail, home to penguins, free-flying bats, rainbow lorikeets and more. Lemurs and meerkats can be found in the African Village, or step back in time in Land of the Living Dinosaurs and Ice Age.

3 Safari Academy

Purpose-built for visiting educational groups, the Safari Academy is dedicated to providing learning opportunities for all – from nursery up to university level. Pupils can immerse themselves in a unique learning environment supported by the education team, who aim to inspire a future generation of conservationists.

4 Educational extras

Bring the curriculum to life by booking an educational extra. The 45-minute Discovery Sessions, held in one of WMSP's five classrooms, are tailored to complement your school topic/theme. Additionally the Walking Safari guided tours of the walk-through areas help to enhance pupils' knowledge.

5 Places to play

During the summer season, schools can upgrade admission to include wristbands



for the rides. Plummet 30 metres on Venom Tower Drop or get truly soaked on Wild River Rafting. Meanwhile, little ones and SEN groups can explore Boj's Giggly Park – a multisensory play area.

www.safariacademy.co.uk T: 01299 404888 E: education@wmssp.co.uk

MAKE EVERY TERM A WILD ADVENTURE



To book a visit call 01299 404888 or email education@wmssp.co.uk

WWW.SAFARIACADEMY.CO.UK

WEST MIDLAND
**SAFARI
& LEISURE
PARK**

DISCOVER IT ALL

The inside story

Christopher Oram | frozenthemusical.co.uk

A journey through the traditional fashion, art, culture and architecture of Norway cast quite a spell over the creative team tasked with recreating the world of *Frozen* for the stage...

When Olivier and Tony Award®-winning costume and set designer Christopher Oram began transforming the animated outfits from the film *Frozen* for the stage, he reimagined the iconic costumes with something familiar and something new. "There's a lot of embroidery in Norwegian work, and a lot of the rosemaling. It's all floral and decorative," he says. "So we've incorporated a lot of that into the visuals of the show. We based Elsa's magic on that, too. When she controls her magic, she has a sense of floral quality about it."

Costumes like Anna's coronation dress (a silk taffeta with enhanced dimensional embroidery in satin and organza) reflect a classic Norwegian style of 'bunad'. So, too, does the outfit worn by Prince Hans, who is the "most classically Disney character in the piece," says Oram. "He's a handsome prince in a fur coat – as many princes are – but the detailing is specific to Norway."

Imagining the mystical

Set pieces, too, in *Frozen* reflect Scandinavian architecture, especially in the wooden-like structures and the staves on the castle where Elsa and Anna live. "With the architecture in Norway, it's hundreds and hundreds of years old. These churches have been around since the first millennium," says Oram, who also designed the sets for the stage production.



"There are wooden structures that have kind of warped and twisted and aged with time. And every year they're painted with tar, which paints them black for kind of the first half of the year. Then, over the summer season, the tar melts and it kind of stains away. The wood becomes golden brown underneath it."

It's that mystical element that challenged Oram. "I needed to translate that onto the stage in a way that people understand this stuff has been around for a long time. This is ancient, solid architecture, which would then subvert,



because obviously you know you have a magical element that comes into it and changes the nature of the piece... There's nothing like that anywhere else in the world.

"More importantly than anything, [creating a theatre production] is a collaborative process. No one person can make this whole show. To put on a show as big as this, it takes a lot of people. But you know, we all pull our own bits of weight. We all kind of balance. My stuff looks great because it's lit nicely. My stuff looks horrible if you just turn the working lights on. But if you light it from within, or light it from one side or the other, you create the magic. You create the pictures. So it's always, always, always about working with other people. That's the key to solving the problems."

Content originated and adapted from CUE BROADWAY.

For more information, visit www.frozenthemusical.co.uk



TIMELINE HIGHLIGHTS

2013

Frozen the film is released in cinemas becoming a global phenomenon.

2014

Frozen wins Academy Awards® for Best Animated Feature and Best Original Song.

2019

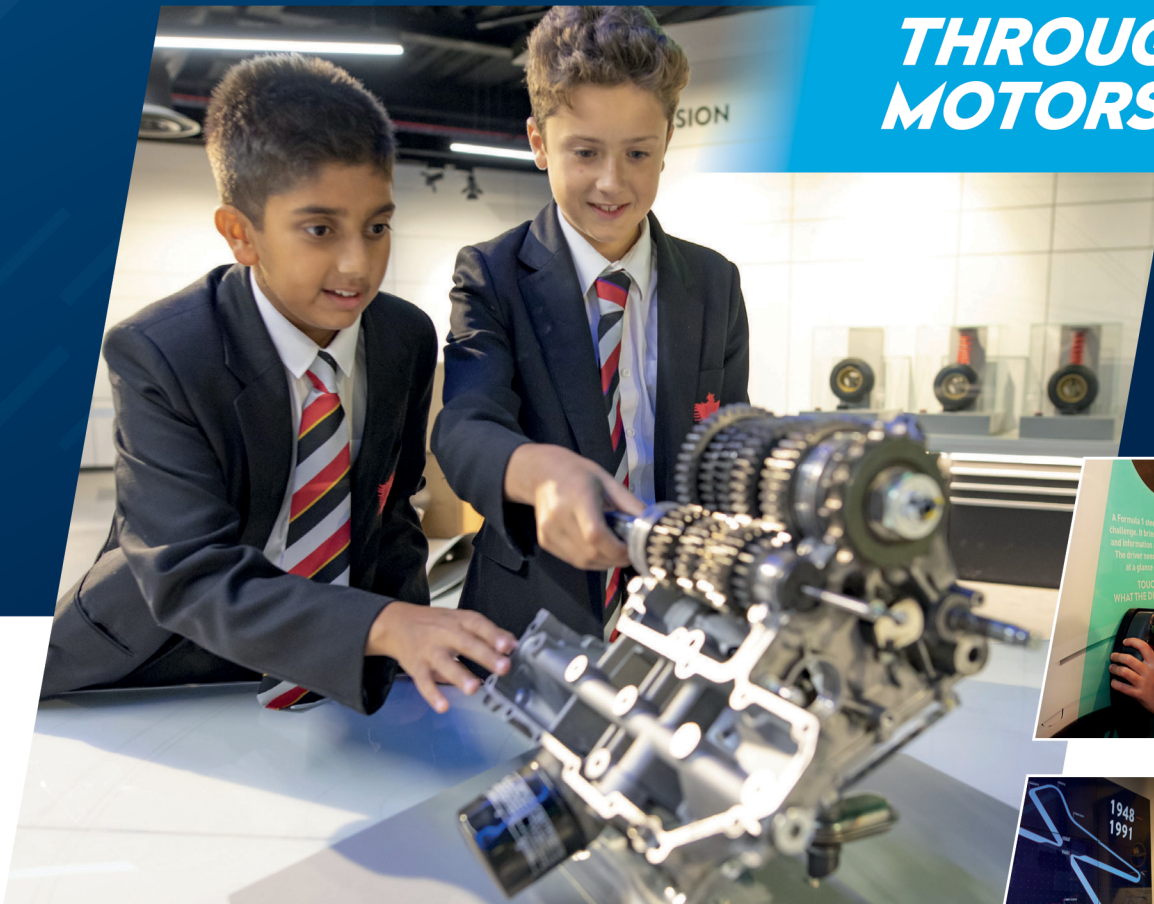
Frozen 2 is released in cinemas, breaking records in opening weekend.

2020

Frozen the Musical opens in Theatre Royal Drury Lane in October.

INSPIRING MINDS

THROUGH MOTORSPORT



ENJOY A WHOLE-DAY VISIT **EXPLORING STEM, CAREERS AND HISTORY** **AT THE HOME OF BRITISH MOTOR RACING**

Educator-led hands-on workshops in our learning studios overlooking the circuit

Teacher-guided tours of our 4000sqm exhibition with films, interactives and artefacts

Outdoor time exploring the original circuit and watching any on-track action

**A BRAND NEW IMMERSIVE
VISITOR ATTRACTION**

TO PLAN YOUR SCHOOL VISIT

go to www.silverstone-experience.co.uk/learn
or email learning@silverstone-experience.co.uk

Engage their minds with motorsport

A packed day at The Silverstone Experience will inspire children in STEM

10am

The excitement begins before the coach arrives, as The Silverstone Experience is located at the home of British motor racing! As the children enter the building they'll see a Formula 1 car above their heads – a Lewis Hamilton Mercedes hanging from the ceiling – before heading to their Learning Studio overlooking the track.

10.30am

Pupils begin their teacher-led visit in the starting grid, for a thrilling journey through the past 70 years of racing. They then head into the exhibition to learn how the circuit corners got their names, with interactive stories about medieval monks, historic gardens and the circuit's roots as a WW2 airfield – supporting the history curriculum at all key stages.

11am

It's time to find out what happens on race day and learn about everything from

safety to strategy. Pupils can have a go at commentating on a race, feel what it's like to use a wheel gun in a pit stop and find out about the many careers in motorsport.

11.30am

STEM can be a daunting topic for some pupils, but The Silverstone Experience's Tech Lab brings it to life in the most engaging way. From the miniature wind tunnel to explanations of braking, gears and suspension, the hands-on exhibits, including a Mercedes Formula 1 engine, are guaranteed to inspire. A thrilling visit to the 360-degree cinema concludes the exhibition.

12.30pm

After lunch, pupils can enjoy time outdoors walking on the original circuit from the first grand prix held at Silverstone! This is the chance to catch any activity that



is happening on track and see science put into action as the cars negotiate Brooklands and Luffield corners.

1.30pm

Rounding out an action-packed day is a brilliant workshop delivered by a learning and engagement officer and featuring unique motorsport artefact handling. This lesson will develop and reinforce the themes that children have explored in the morning.

{ BEFORE YOUR VISIT }

ASK

Make the most of your visit by agreeing the workshop format. Ask the learning team what will be best for your key stage group and the specific learning focus.

READ

You'll be sent an exhibition teacher guide to read before your visit to The Silverstone Experience so you'll be able to direct your pupils to the areas of your learning focus.

TALK ABOUT

Build excitement for your pupils' visit by discussing the themes they'll explore – whether STEM, careers or history-based. What objects will they handle in the workshop?

What your group will GAIN FROM A WORKSHOP

Many attractions offer educational sessions to school parties, but are they worth additional expense? Here's why spending a little more can significantly boost educational impact...

ROB JAINA

Having switched from being a school teacher to an education specialist at a new visitor attraction, it's fair to say I'm acutely aware of the need for any school trip to provide something special for young people – something that cannot be offered in the classroom. Perhaps it's this need that leads teachers to ask me, "What is the value in booking a workshop or facilitator-led session? Isn't it just like being in school?"

Speaking from my experience of taking groups to venues for educational enrichment, the value of both organising school trips and booking workshops to attend while on them cannot be

underestimated. For many young people the experience will be one they'll remember, and not only for the subject matter. The whole visit can provide an alternative type of group dynamic and social situation for pupils. Workshops, too, can offer a new social setting with a different type of lead educator, providing opportunities that some pupils lack in a normal classroom situation. They build on learning and engage minds in a subject in a way that cannot be achieved in the classroom.

Tailor the experience

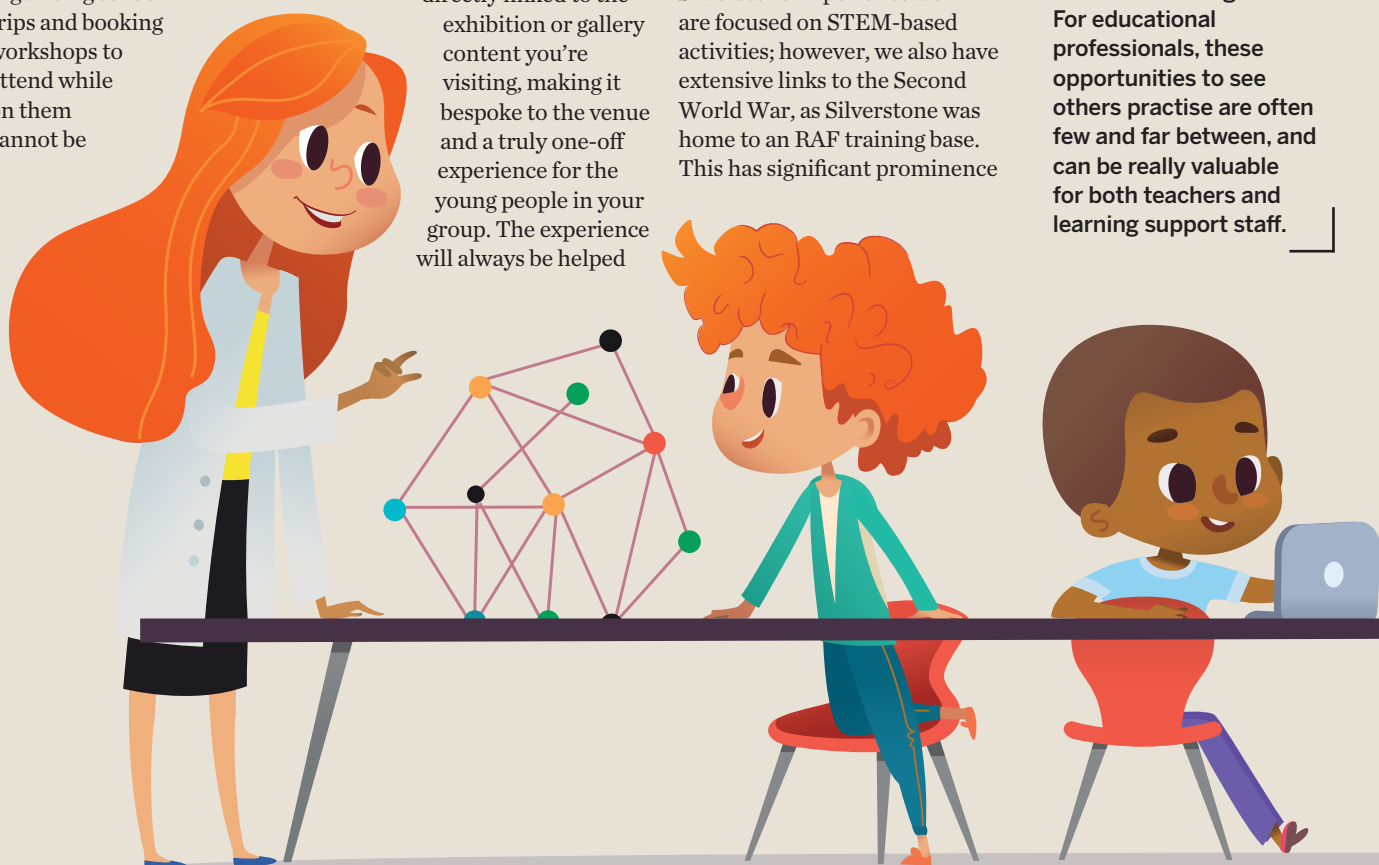
A workshop is best when it is directly linked to the exhibition or gallery content you're visiting, making it bespoke to the venue and a truly one-off experience for the young people in your group. The experience will always be helped

by any pre-trip preparation you put in. Go and visit before if possible and plan your day. Talk to the education officers at the attraction, as they will be passionate about what they do and will want all your learners to have a great time. They are always keen to understand your needs and wishes for the day. Are there specifics that can be talked about in class in preparation for the visit? Does the attraction have any pre- or post-visit activities to support you or that will build on the workshop experience?

Look at all opportunities for other curriculum links on your visit. For example, at The Silverstone Experience we are focused on STEM-based activities; however, we also have extensive links to the Second World War, as Silverstone was home to an RAF training base. This has significant prominence

IMPROVE YOUR PRACTICE

An additional and often overlooked benefit of attending a workshop on a school trip is that school staff get to see an educational practitioner working in a different environment. From visiting workshops, I was often able to pick up tips from the workshop leaders, on topics as diverse as the handling of artefacts, the presentation of information, and even behaviour management! For educational professionals, these opportunities to see others practise are often few and far between, and can be really valuable for both teachers and learning support staff.



“Talk to the education officers at the attraction; they are always keen to understand your needs and wishes for the day”

for us, as the exhibition is housed in the remaining Wellington bomber hangar and the history of the venue is given pride of place in the early phase of our exhibition. In the primary setting these can be great additions to reinforce other aspects of classroom learning, or possibly develop additional learning opportunities.

Foster a love of learning

Having spent a number of years working in very challenging educational environments I have often (particularly with older learners) battled with the concept that school is somewhere that pupils learn and therefore, as they don't enjoy school, they won't enjoy learning. However, learning is a process we all go through and there's no doubt it can be enhanced

through an educational visit and workshop experience. At The Silverstone Experience, for example, we are immersed in the world of motorsports. This highly secretive world is based around research and development. Teams, engineers and drivers are learning all the time – it is their job – and a workshop can really show children how important this is. Some car companies' entire research and development budgets are run through their motorsports programmes, and getting this example across to young people is vital when instilling the idea. This is where a workshop in this type of setting can really enhance the visit and young people's understanding of an industry or subject area, especially with an enthusiastic practitioner giving real-world examples.

GET HANDS-ON

Imagine the scenario: a group of pupils are given an artefact to handle and explore. Think about the questions that can be asked and the thought processes that can be started. Imagine how important these sessions are when the young learners are immersed in a historical environment. Seeing the location where the artefact may have been used brings the whole experience to life and will stay with children forever. This is the same for any visit to any venue when delivered in the context of the subject the young people are studying.



Don't miss out!

So, when you're next planning a school trip to an attraction or exhibition, give serious consideration to adding a workshop to your plans for the day. The progression of learning for a young person

taking part in a workshop is invaluable and often justifies the small additional cost incurred. It doesn't matter if your learners are budding engineering types or have a creative flair – if the attraction is engaging, the workshop will stimulate an initial interest that will help to expand young people's minds.



Rob Jaina
is Learning
Officer
at The
Silverstone

Experience. Visit silverstone-experience.co.uk

TUTANKHAMUN

TREASURES OF THE GOLDEN PHARAOH

SAATCHI GALLERY | 2 November 2019 – 3 May 2020

Presented by



“...literally dazzling”

Tom Holland,
The Sunday Times

CANOPIC COFFINETTE OF TUTANKHAMUN

150 ORIGINAL ARTEFACTS • FINAL WORLD TOUR

School rates available from £9*

To book call Ticketmaster 0844 453 9002

More info: tutankhamun-london.com

Produced by **IMG**

Delivered by **FedEx**

In partnership with

CBRE

THE  TIMES
THE SUNDAY TIMES

*Booking fees apply



LEARNING JOURNEYS

Workshop 1 - Painted Boxes & Artefacts

Pupils will explore the many boxes and their contents discovered in Tutankhamun's tomb. Taking inspiration from the highly decorated artefacts, they will design a box and object that includes hieroglyphics, Ancient Egyptian symbols, or a painted scene referencing the king's name, life and status.

Workshop 2 - Illustrated Narrative

Pupils will create an illustrated piece responding to the historical narratives and Ancient Egyptian mythology that is portrayed throughout the exhibition. They can take inspiration from Tutankhamun's own life, the discovery of the tomb by Howard Carter, the journey to the afterlife, or the legendary curse of the pharaoh...

Workshop 3 - Sacred Objects

Pupils will discover the symbolic artefacts discovered in Tutankhamun's tomb and explore their meaning. Taking inspiration from existing sacred objects such as the ankh, emblematic of eternal life, or the falcon, which provided protection and safe passage to the afterlife, they will create or invent their own object to assist Tutankhamun in his journey.

School rates are available for groups of 10+ pupils aged 18 and under, with tickets priced at £9 + fees per person (student and teachers) and a 1:10 teacher/student ratio.

WE LOVE TO LEARN

Enter the tomb of the pharaoh

Inspire pupils with the tale and artefacts of boy king Tutankhamun

The remarkable discovery of Tutankhamun's tomb is one of the most intriguing stories from history. The tomb and its contents lay undiscovered for more than 3,000 years until they were found by British archaeologist Howard Carter and his financier Lord Carnarvon in 1922. The pair and Tutankhamun became famous around the world. Now, 150 glittering

treasures from the tomb are travelling all the way from Egypt on a tour of the world, and they're coming to the UK!

A visit to the exhibition will transport your pupils back in time to the world of the ancient Egyptian boy king. Be dazzled by the artefacts, and hear incredible stories of his life, afterlife and one of the most famous discoveries of all time...

CURRICULUM LINKS



GEOGRAPHY

This fascinating insight into the lives and beliefs of the Ancient Egyptians will remain with pupils for the rest of their lives.



HISTORY

The dual narrative – the captivating story of the boy king and the discovery of his tomb – will inspire pupils' curiosity in the past.



ART

These beautifully crafted objects, and the fascinating stories behind them, will engage pupils and encourage them to consider how art and design shape history.



5 OF THE BEST

ANIMAL ATTRACTIONS

From the farmyard to the rainforest, you'll find fantastic creature-themed days out for your group right here...

1 Godstone Farm

Godstone Farm opened its doors 40 years ago as an educational attraction for school children and over the years it has developed into the farm countless visitors enjoy today. Its schools programme has been designed to complement the statutory framework for the Early Years Foundation Stages and both the KS1 and 2 programmes of study, mixing in a whole heap of fun. Children with SEND are welcomed, with semi-structured visits on offer.

For more information, call **01883 742 546**, email **education@godstonefarm.co.uk** or visit **www.godstonefarm.co.uk**



LOTS TO DO

Activities at Godstone include tractor rides, farm animal talks and feeding, a focus on food (for Y2 plus), and dinosaur discovery and mini-beast sessions.



2 Stratford-upon-Avon Butterfly Farm

A visit to Stratford-upon-Avon Butterfly Farm offers an excellent opportunity for children of all ages and abilities to become jungle explorers and learn about rainforest environments, as well as the life cycle of a butterfly, and the ancient Maya. KS1 and 2 curriculum subjects are covered, with all tours tailored to meet your group's needs. Tours include an introductory talk and a 'Meet the Mini-Beast' handling session. With plenty of hands-on, close observation and activity, this is an immersive and educational day out for your class.

For more information, call **01789 299 288**, email **schools@butterflyfarm.co.uk** or visit **www.butterflyfarm.co.uk**



3 Cotswold Wildlife Park & Gardens

From art to geography, science to literacy, whether you want an educational talk for your pupils or are just coming for a visit, Cotswold Wildlife Park has plenty to offer. Home to over 260 different animal species, and comprising 120 acres of stunning gardens and parkland, it is the perfect place to bring the National Curriculum to life. Your pupils can get eye to eye with giraffes, watch rhinos graze on the manor house lawns, walk with lemurs, take a ride on Bella the train or explore the adventure playground. Free coach parking is available.

For more information, call **01993 825 720** or visit www.cotswoldwildlifepark.co.uk

4 West Midland Safari Park

Located in Worcestershire, West Midland Safari Park has been welcoming educational groups for over 40 years – and with over 140 species of amazing animals on show, pupils can immerse themselves in a truly unique learning environment. In 2017 the park's purpose-built Safari Academy opened – a sustainable, state-of-the-art education centre, dedicated to providing learning opportunities for all ages. A variety of educational sessions are on offer to complement the curriculum, delivered by an experienced education team who aim to inspire a future generation of conservationists. Prices start at £9.50 per child with free teacher places available too.

For more information, call **01299 404 888** or visit www.safariacademy.co.uk



BOOK NOW

Boost the impact of your trip by signing up for one of the talks, tours and workshops on offer. Education packs for KS1 and 2 are also available.



© Monkey World

5 Monkey World

Whether your pupils are learning about primate rescue work, the impact of deforestation or how woolly monkey use their tails, Monkey World's experienced education team can enhance your trip to Monkey World and support learning in the classroom. As well as curriculum-linked sessions and workbooks, Monkey World offers visitors the chance to see over 250 monkeys and apes including the largest group of chimpanzees outside of Africa, Europe's only orangutan crèche and a breeding group of woolly monkeys – all in one day!

Visit www.monkeyworld.org, call **01929 401 022** or email education@monkeyworld.org for more information.

Samsung Digital Discovery Centre

The British
Museum

Free digital activities for schools

Attend a workshop or take part in a self-led activity in the galleries. Virtual visits are also available, linking school classrooms to the Samsung Digital Discovery Centre for a live video conferencing workshop.

britishmuseum.org/samsungcentre



Book
now

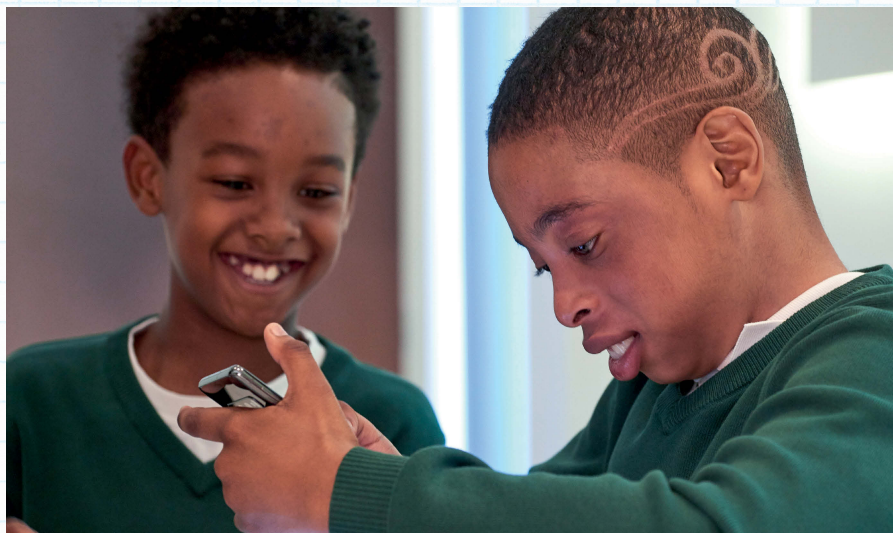
Marble bust of Charles Townley,
London, UK, 1811.

Papier maché mask representing
the god Krishna, West Bengal,
India, c. 1970–1980.

Ivory figure, Goa, India, 1600–1700.

Sponsored by

SAMSUNG



WE LOVE TO LEARN

Use tech to inspire your class

Visit the Samsung Digital Discovery Centre and uncover the past

The Samsung Digital Discovery Centre offers free digital activities for schools. In this newly refurbished, purpose-built learning space in the heart of the UK's most-visited museum, pupils use technology to explore the collection and discover the world's history and cultures. Teachers can choose from a range of free school sessions. Pupils can attend a workshop in the Centre or take part in a

Sponsored by Samsung

self-led activity in one of the galleries.

In order to make the Samsung Digital Discovery Centre accessible to students across the UK and beyond, virtual visits are also available, linking school classrooms to the Centre for a live video-conferencing workshop. To find out more about what's going on in the Samsung Digital Discovery Centre, visit www.britishmuseum.org/samsungcentre.

CURRICULUM LINKS



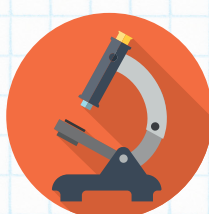
GREECE

Discover Ancient Greece in A Gift for Athena or Greek Temples sessions; pupils learn about Greek religion, architecture and the power of Athens. (KS2)



CHINA

Uncover the fascinating achievements of the earliest civilisations by exploring bronze, jade and pottery from Shang Dynasty China. (KS2)



BRITAIN

Learn about life in Britain during the Bronze Age and Iron Age via a virtual visit, including 3D-scanned objects from the Museum's collection. (KS2)

LEARNING JOURNEYS

Virtual visit – Peek into Prehistory

Connect your classroom to the British Museum for a video-conference KS2 workshop linked to history and science. Pupils learn about life in Britain during the Bronze Age and Iron Age using quizzes, challenges, virtual reconstructions and 3D-scanned objects from the Museum's collection. This session requires access to digital technology readily available in most schools. After you book, you'll be contacted with support and to arrange a test call. (Session: 90 mins; max group: 32.)

Self-led session – A Gift for Athena

Use augmented reality technology on Samsung Galaxy tablets supplied by the Museum to explore the Parthenon Gallery in this KS2 session linked to history, art and design, and computing. Pupils learn about Ancient Greek religion and how the Parthenon's architecture celebrated Athena's greatness and communicated the power of Athens. Sessions are available any weekday in term time. (Session: 60 mins; max group: 32.)

Digital session – Sutton Hoo Headline

In this session for KS2, linked to history, English and computing, learn about the Sutton Hoo burial site and how it was excavated by archaeologists. Pupils use Samsung Galaxy smartphones to consider what objects from Sutton Hoo tell us about Anglo-Saxon life and use their research to produce a news report about the site's discovery. Copies of pupils' videos are emailed to your school so you can continue the learning after your visit. (Session: 180 mins, plus 30-min lunch; max group: 32.)



www.britishmuseum.org/samsungcentre
E: tickets@britishmuseum.org T: 020 7323 8181

AN INDOOR CITY RUN BY KIDS

PRICES FROM
£10
PER PUPIL
T&Cs apply*

REAL-LIFE ACTIVITIES

Focussing on KS1, 2 and
3 for STEM, PSHE and
English.

- 4 hours in the city
- Free planning trip for teachers
- Free teacher tickets
- Free downloadable resources
- Secure environment

*Please contact our team at
schools@kidzania.co.uk for full T&Cs



KidZania
London



NEW CAREERS WORKSHOPS

KidZania provides additional opportunities for schools to book educational visits outside of normal operating hours. For these days it offers apprenticeships, which get pupils exploring their career options...

Workshop 1 - Careers in Public Services

Pupils will gain an understanding of what careers are available in the public services within the city of KidZania and the main quality every public services employee needs – caring for others! To complete the workshop, children must perform interviews around the city, asking public service workers what it takes to do their job well.

Workshop 2 - Careers in Hospitality and Retail

This workshop begins with an introduction to what hospitality and retail are and which jobs in KidZania sit in this sector. Pupils will be asked to roam the city and consider how technology has made services for the public more convenient and to report back on their findings.

Workshop 3 - Careers in Entertainment

Pupils will explore the range of jobs at KidZania that provide entertainment to the public and appear through different media, such as TV, radio and theatre. Children will then find hidden words around the city that provide character descriptions, settings and story themes, which they will then use to collectively create their own story to report.

WE LOVE TO LEARN

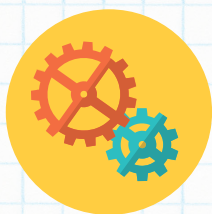
Raising career aspirations

Introduce children to the world of KidZania London and develop a range of workplace skills

Discover experiential learning at its best with KidZania, at Westfield London, Shepherd's Bush. Let aspirations and inspiration soar as pupils step into the indoor city built for kids aged four to 14. Here they can work, earn and play in a safe and inclusive environment, thanks to an ever-expanding programme of careers role play and communications exercises. From learning what it takes to fly with

British Airways in a real-life flight-training simulator, to sniffing out a good story with Metro newspaper, many careers are run in partnership with real brands to enhance understanding of skills required in the workplace. Activities are designed and supported by qualified teachers with reference to the National Curriculum, to help bring learning to life around STEM, literacy and PSHE.

CURRICULUM LINKS



STEM

Invite your pupils to become a surgeon at KidZania's Hospital, an engineer in the Nintendo Labo Workshop, or a pilot at the Aviation Academy.



ENGLISH

Global's Radio Station in KidZania boosts pupils' confidence in public speaking and reading from a script. And don't forget to visit the city's very own library!



PSHE

Build confidence in the Acting Academy or discuss real issues at the University – all whilst working in groups to support teamwork and social skills.



Discover animals and artefacts

Visit the award-winning Flamingo Land and explore the lives of a host of exotic creatures

Lots to learn

Flamingo Land Resort offers a unique learning experience for children of all ages. Its on-site lessons are based on England's National Curriculum, and a range of workshops and tours are also available, including Rain Forests, Habitat and Adaptations, and more.

Save money

Schools can take advantage of an exclusive price for zoo-only visits booked with an education session (available year round). A discounted price is also available for zoo and theme park visits booked with an educational session (available March until November).

Easy to plan

Teachers can access risk assessments for general visits to the zoo and theme park. The resort caters for a minimum of 10 students for pre-booked educational sessions and offers free pre-visits to up to two teachers per class for those booked onto educational sessions.

Visiting hours

During the summer season (April to November) the park is open 10am to 5pm. In the winter season (November to March) the park is open 10am to 4pm. Educational sessions are available between 10am and 2pm.

www.flamingoland.co.uk T: 0800 40 888 40 E: zooeducation@flamingoland.co.uk



{ BEFORE YOU GO }

READ UP

Take time to research what creatures your pupils will discover in the zoo.

BE PREPARED

Plan the best routes to see the animals to maximise your learning time.

DON'T FORGET!

Make a note of where the entrance and exits are – and, of course, the toilets!

flamingo LAND
Resort Yorkshire

Education sessions

From ONLY £7.50 per student inclusive of educational activities*

To book or for more information contact:
zooeducation@flamingoland.co.uk
0800 40 888 40 ext 625

Quality Badge awarded by
Council for Learning Outside the Classroom

IZE

*Prices dependent on group, season and theme park access. Educational activities subject to availability and must be pre-booked.

Let the learning COME TO YOU

Bringing high quality educational workshops into school is a fantastic alternative to organising a day away, say **Sam Bryan** and **Joseph Parsonage**...

At some stage in everybody's teaching career the terrifying realisation that you have to organise a school trip dawns on you at three o'clock in the morning. But what if there was a way to take the stress out of introducing pupils to new and inspiring experiences?

There's no denying that great trips can be truly memorable for children. Ask any of your peers, or even the children you teach, about their school best bits, and they won't pick out a fabulous SPaG lesson on fronted adverbials; instead, it will be the time they went to the zoo and saw a monkey picking its nose and flicking it at its monkey friends (other school trips are available!). For children, these opportunities to leave the classroom behind for a day or several can lead to fabulous learning opportunities and yield long-term benefits.

However, to think you have to head out and about to access memorable and educationally beneficial experiences is false; they can also come to you...

Why a workshop?

Booking an in-school workshop makes sense on many levels. As we touched upon, there's no getting away from the fact that taking children off-site can be stressful. There are the thorough risk assessments to complete, and getting the children on the bus safe and sound, after waiting 20 minutes for it to arrive, only to discover that half the seatbelts don't work, is enough to put anybody in an early grave. By the end you may

catch yourself counting the children for the 50th time in 20 minutes and dreading the journey back, because you know Billy will be sick and John will need the toilet five minutes after you have reminded everybody to go...

It goes without saying that by bringing the experience to you, you can immediately eliminate many of these stresses and anxieties. But it's not just about making your life easier. Children can gain a huge amount from in-school workshops – and so can you.

Learning experiences

The good news is there are numerous high quality teaching workshops that you can bring into your school. The educational benefits are obvious: watching a child's face light up when, for example, a

rocket is blasted into the air, or a dinosaur/dragon visits the classroom is priceless and provides pupils with an experience that will ignite their imaginations whilst creating a superb learning platform. Busy teachers aren't always able to set up these kinds of opportunities – sourcing different props, artefacts or other materials takes time – so arranging a workshop can add something unique to children's learning.

Not only that, but being able to watch and learn from external visitors, some of whom are teachers themselves, and adapt your teaching as a result, is a brilliant way to improve your, and your colleagues', approach when revisiting a topic in the future. We're all on a journey to become the best educators we possibly can, and watching an experienced

workshop provider delivering a lesson in your school gives you a great opportunity to observe, an essential part of continuing professional development.

Do your research

Booking a workshop isn't an entirely stress-free experience: you need to find the right option for your children, and then trust that it will go well on the day. Our top tip is to always do your research. Looking for workshops that are led by teachers or experienced educational facilitators is a great way to start, as they know how to talk to children and deliver relevant and progressive learning opportunities that will coincide with the curriculum. You can find teachers working all over the country delivering workshops in schools. The best workshops out there get the best reviews. Take your time and read these reviews, and find out who they are by. A review written by a parent is valuable; however, finding a teacher's perspective is priceless and will give you a clear indication of the quality you will receive.

Finally, whatever you're planning for your class, stay calm, stay happy – and if it's three a.m., lie down and go back to sleep.

Sam Bryan and Joseph Parsonage are the founders of workshop provider Teach Rex. Visit teachrex.co.uk



TEACHREX

• NEW AGE EDUCATION •

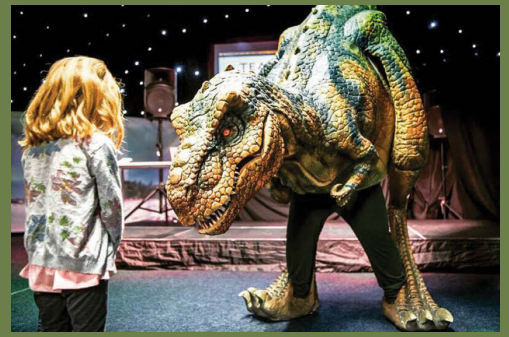
Bringing Dinosaurs & Dragons to the classroom - to bring learning to life. Delivered by two Primary School teachers.



AWARD
WINNERS -
EDUCATION &
TRAINING PROVIDER
OF THE YEAR
AWARD
2019

PRICES -

Enquire for your
bespoke quote & Dinosaur
Egg/Magical Book
Differentiated workshops
from EYFS to Year 6.
Creative Writing,
ICT & Science.



What is included in our workshop?

- iPad Film Making Workshop
- Dragon English focused workshop
- Green Screen Workshop
- Dinosaur Science focused workshop

BRING TEACH REX TO YOUR SCHOOL CALL: **07585 705967** or **07921 859466**
EMAIL: **EDUCATE@TEACHREX.CO.UK** FOR MORE INFORMATION AND YOUR BESPOKE QUOTE

teachrex.co.uk

WE TRAVEL ACROSS THE UNITED KINGDOM



The inside story

Teach Rex | www.teachrex.co.uk

Sam Bryan and Joseph Parsonage's unique and engaging in-school workshops are certain to inspire pupils and support learning across the curriculum

Teach Rex provides creative workshops in schools that ignite young minds and imaginations. Each session transports children to a world of dinosaurs and dragons, enabling pupils to experience something truly magical. The workshops are complemented by materials connecting the experience to science, English and ICT, helping you to continue the learning long after the session is over.

The workshops are the creation of Sam Bryan and Joseph Parsonage, two primary school teachers who strive to inspire and motivate children to develop a love of learning. The belief that every child deserves spectacular opportunities and memorable experiences is at the core of everything Teach Rex offers.

The team use Ofsted guidelines, the curriculum and their teaching experience (they're currently practising teachers in the North West) to create the optimal environment for learning. The workshops are designed for children of all abilities and are differentiated from Nursery up to Year 6.

Making an impact

Teach Rex supports the new Ofsted framework in that its intent is to provide an emotional hook and creative learning sessions. The materials are designed to maximise the likelihood that these experiences will be committed to children's long-term memory and enable them to connect their learning to other subjects. They encompass a wide variety



of content outlined in the curriculum. An experience for general knowledge and new vocabulary is planned, and is progressive across year groups. The impact on writing (particularly that of reluctant boys), Sam and Joseph say, has been incredible to see, and there are many reviews available on their website and social media pages commenting on progression in the classroom linked to a visit from Teach Rex. How better to hook a class into a topic than bringing a dinosaur or dragon in to see them.

Learning with dinosaurs

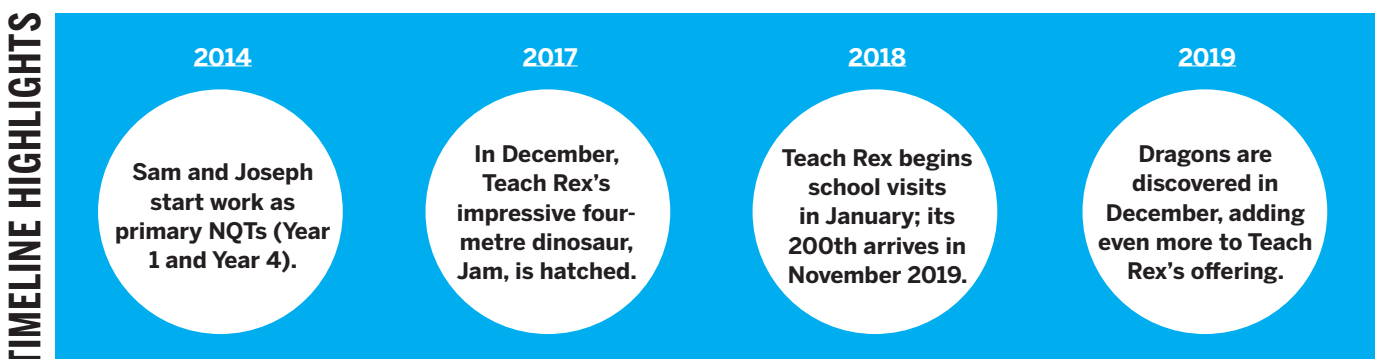
The first dinosaur workshop has a science focus and encourages children to ask scientific questions. All Teach Rex workshops are interactive and the team are able to teach pupils the concept of evolution and how science has changed over time with 'Jam', their four-metre dinosaur. The cross-curricular links were produced in partnership with Oakwood Avenue Community Primary School's SLT and are designed to give teachers a variety of ideas that can lead to progressive learning outcomes.

Writing about dragons

The first dragon workshop introduces an exciting new aspect to storytelling in the classroom. Teach Rex sends a mystifying book to hook children into the visit before the team arrives at your school. Through a tale that comes to life before their eyes, children are exposed to a range of vocabulary that they can use in their writing.

The dragon, mythical creatures and legends workshop has direct links to reading and writing, with following workshops encouraging many more learning opportunities linked to different areas of the curriculum.

For more information, call Sam Bryan on 07921 859 466 or Joseph Parsonage on 07585 705 967, or email educate@teachrex.co.uk. Follow on Instagram [teach_rex](https://www.instagram.com/teach_rex) and Twitter [teach_rex](https://twitter.com/teach_rex) and visit Teach Rex on Facebook to read recommendations.



CLOSER TO THE OCEAN

IN EUROPE'S BIGGEST AQUARIUM

IN BOULOGNE-SUR-MER

ONLY 20 MINUTES
FROM CALAIS



Located on the Opal Coast in the center of Boulogne-sur-Mer, Nausicaá takes you for a journey to the heart of the ocean. Nausicaá is more than simply an aquarium, it's one-of-a-kind centre for the discovery of the aquatic environment that's simultaneously fun, educational, scientific, and essentially focused on the relationship between Man and the Sea.

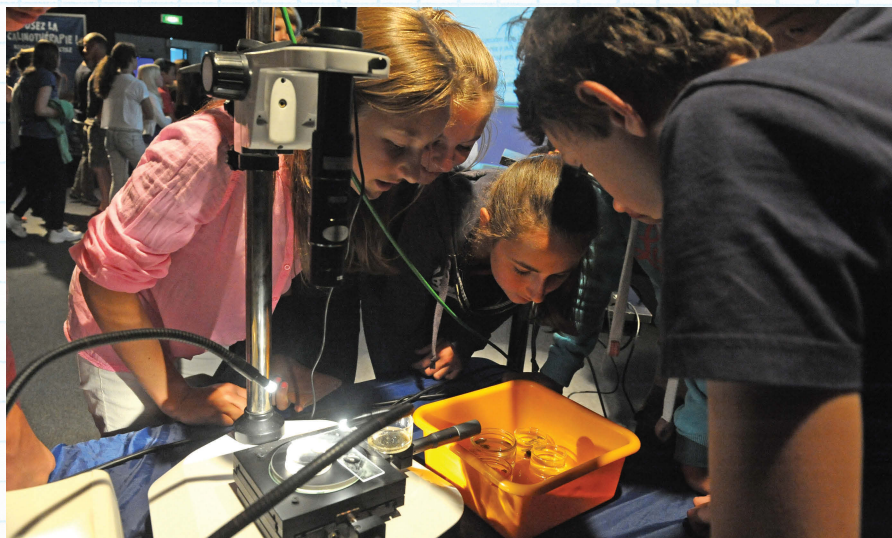
Young and grown-up explorers get onboard for a day-long expedition to conquer Planet Sea. Discover all its secrets and treasures through two immersive and fun-filled exhibitions : « Journey on the High Seas » and « Mankind and Shores ».

More information at www.nausicaa.co.uk

AN UNFORGETTABLE
EXPERIENCE !



Nausicaá



WE LOVE TO LEARN

Explore the ocean world

Plan unforgettable school trips to the heart of the ocean

Offer your students a unique experience – discover a mysterious world that remains greatly unexplored and meet the exceptional beings living there. Nausicaá provides exciting adventures full of surprises for an excursion or as part of an educational project. A range of themed workshop activities, organised by the educational team, are available; adapted to suit all ages from Key Stage 1 to A level,

they complement your visit and focus on a particular subject. By participating in these activities, children become more aware and will learn a greater respect for the marine environment, whatever their year group.

Online educational resources, including kits and teaching aids, are also available from Nausicaá's specialised website – visit www.nausicaa.co.uk/school

CURRICULUM LINKS



OCEAN ENERGY

The seas and oceans are one and the same, and are essential to our life on earth. Everything we do on earth has an impact on the sea, because everything ends up in the sea...



OCEAN LIFE

The ocean is full of living beings that depend on the environment. Each develops its own strategy for survival... We still have so much to learn about the sea's biodiversity!



OCEAN CULTURE

Extraordinary exchanges take place in the ocean: people and goods travel, and information flows. It is a precious resource which needs new governance for a sustainable future.

www.nausicaa.co.uk T: +33(0)3 21 30 99 89 E: contact@nausicaa.fr

LEARNING JOURNEYS

Workshop 1 – Zoom into marine life (ages 8–18)

Observe tiny fauna magnified thousands of times on a wide screen and discover the importance of good water quality for the survival of the species.

Workshop 2 – Calculate your ecological footprint (ages 8–18)

Discover your ecological footprint and impact on climate change with this 20-question quiz!

Workshop 3 – To the rhythm of the tides (ages 6–10)

Explore marine biodiversity. Discover living animals from the seashore and their adaptation to the tide cycle.

Workshop 4 – Zoom into marine biodiversity (ages 8–18)

By observing tiny marine animals through microscopes in the lab, pupils will discover many shared characteristics...

Workshop 5 – Let me sea! (ages 9–12)

Insights into our relationship with the sea, a wonderful world filled with a diversity of life forms, environments, relationships and ecosystems.

Workshop 6: Sharks! Not even scared! (ages 9–17)

An exploration of sharks and their importance in the ocean that will help your pupils see these fascinating creatures differently.

Workshop 7: Abyss trip (ages 9–12)

Discover the inhabitants of the sea through an imaginary trip from the surface to the abyss.

Each workshop lasts an hour and needs to be booked in advance – email resa@nausicaa.fr to book or education@nausicaa.fr for more information.



The background of the entire page is a light blue sky with white clouds. On the left, a brown squirrel sits on a dark brown branch. To the right of the squirrel, there are green and red autumn leaves. The Zip World logo is prominently displayed in the upper center. The word 'ZIP' is in large, bold, red letters with a black outline and a small blue square in the 'I'. Below it, 'WORLD' is in white letters with a black outline. Below the logo, there are two dotted lines.

ZIP WORLD

SCHOOLS

www.zipworld.co.uk

Detailed lesson plans

A fully guided visit

On-the-day activity booklet



New
Key Stage
2 & 3
programme





GRAVITY & GEOGRAPHY package

Zip World introduces a brand new education programme inviting teachers to escape the classroom and teach in the great outdoors.

Based in North Wales, Zip World has three sites across the Snowdonia National Park with a wide range of activities suitable for all abilities and ages.

Inspire, challenge and educate using real-life examples via Zip World's adventures - a brilliant way to bring gravity and geography to life that's fun, engaging and memorable.

we are
here
in
**North
Wales**



☎ 01248 601 444

✉ schools@zipworld.co.uk



from
£12
per pupil



“SHOW THEM STEM IN ACTION”

It can be a challenge to engage pupils in science, technology, engineering and maths, but the right school trip can spark a passion that will last a lifetime...

TONI SAGE

What's the deal with STEM? Why should you focus on science, technology, engineering and maths? More importantly, how should you do this? So often we see learning as a focused classroom activity but considering the myriad of different types of people in the world, as well as different abilities of children in our classrooms, maybe we need to start thinking outside the box – or indeed stepping out of the box, to take a break from the school environment and reap the benefits of a well-chosen educational trip...

Why STEM matters

Many school children see the STEM subjects as something they are taught about in school... and nothing more. They don't necessarily make the connection between STEM and day-to-day life; they don't see the science behind boiling an egg, the technology that goes into developing games consoles, the engineering behind the cars that take them to school, or the maths behind whether their favourite football team will win the league.

The trick is to make it relevant to them, to spark an interest in the subjects that surround them – and what better way to do this than to take them

out of the classroom and into an environment where they can see STEM in action.

At first, you might wonder how a visit to a theme park relates to science, technology, engineering and maths, but in reality there are a host of ways in which these attractions can be linked to the STEM subjects and many reasons why you might want to make this your next school trip. So, here are six points to bear in mind when you're next planning...

1 Feel the force

We've all sat in lessons learning about how physics works – sometimes even being able to do practical activities to show how it works – but what better way to embed classroom learning than for your pupils to 'feel the force'? Give your group the chance to experience the science first-hand – whether it's the G-force of an Immelmann loop or a cobra roll, or the centripetal force of being pushed into your seat whilst spinning at 20 miles per hour in an upright position. These are lessons they'll never forget!

2 Make it memorable

Which brings us to point two... Do you remember your science and maths lessons? I can say I largely don't... only really the ones that had something really memorable happen – maybe like learning that you can put your hand through an orange flame on a Bunsen burner. So we should probably all be doing our bit to make lessons more memorable and not only in terms of what is being learned but by

bringing our pupils together to make memories with each other – and for that, you can't beat a school trip.

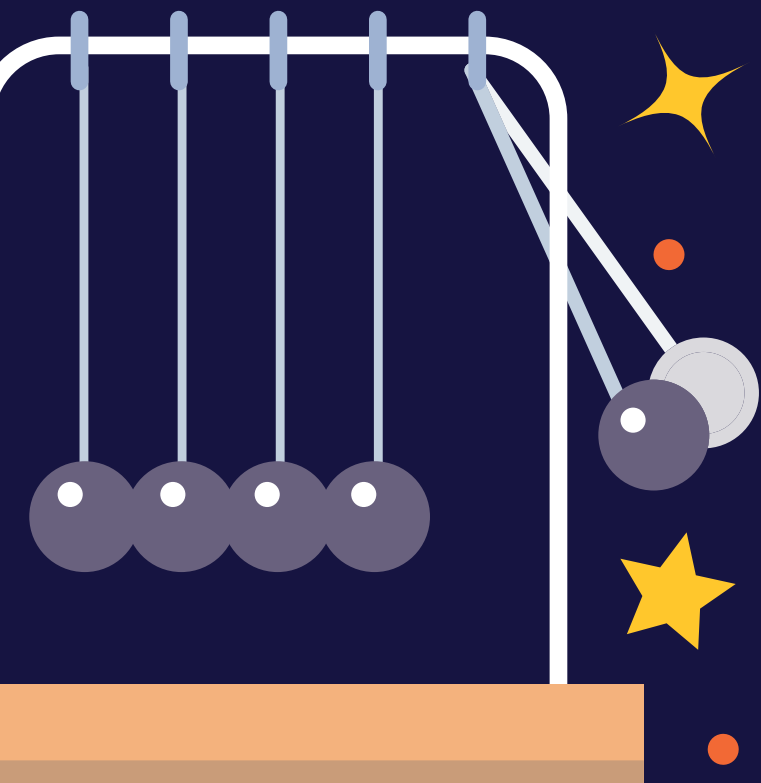
3 Spark an interest

Finding ways to make STEM interesting can make a world of difference to your pupils – if they don't find a subject interesting they can lose their enthusiasm for it, and once that happens it's hard to get back. Conversely, spark an interest and children will be more passionate about the STEM subjects and will likely participate more. Once again, a school trip is the perfect way to achieve this goal.

It's really important that pupils are engaged in their learning – if you can create excitement around the subject they are far more likely to be paying attention. And of course, the earlier you can inspire your students the better – grab their attention young and you can then focus on nurturing and growing their enthusiasm for the subject as they grow up.

4 Spot hidden talents

By taking you pupils out of the classroom, you may find that certain individuals begin to shine in a way they don't while in school – someone who previously appeared



disinterested may suddenly seem a candidate for a career as an engineer or physicist. Think back to when you went on a school trip, be it to a museum, gallery or theme park – was there something there that left you in awe? What impact did it have on you? Can you provide your pupils with the opportunity to experience that feeling for themselves?

5 Get hands-on

Whatever they're like at school, taking pupils out of the classroom is one of the best ways to get them to engage with a subject. It isn't so much about what they learn but *how* they learn and *where*. As mentioned above, some children won't thrive in the standard environment, but will excel in more interactive surroundings.

Gathering knowledge in a classroom setting is always a good starting point, of course, but

“An exciting school trip is the perfect way to challenge any preconceptions your pupils may have about the STEM subjects”

being able to get hands-on is one of the best ways to learn. Seeing technology, science, engineering and maths in action puts STEM in context and allows children to see how the subjects relate to one another. Visiting a working theme park, for example, and taking part in educational workshops is an invaluable way to support learning. By encouraging pupils to explore, question and problem solve in an engaging environment

you can help them to build on their abilities.

6 Challenge preconceptions

When many children look at science, technology, English and maths as subjects they can feel that they are dull or boring. With the demand for those with STEM skills in the workplace ever increasing, and the fact that *all* jobs need basic skills in technology and maths, we need to ensure that we are preparing our students for the future. An exciting school trip is the perfect way to challenge any preconceptions your pupils may have, and show them how much fun STEM can be. Taking them to a theme park, in particular, not only allows them to see all four STEM subjects in action but can also get them thinking about the range of amazing careers that are available to them when they grow up. Stepping into a world in which science, technology, engineering and maths has an impact on every part of the business can't fail to change pupils' views!

Embracing STEM

School trips can work wonders as part of your efforts to help children develop a connection with their learning, and in no area of the curriculum does this apply more than the vital STEM subjects. If pupils are able to visit somewhere they enjoy whilst learning then the value of that learning will only increase – and it might even help shape their future career paths.



Toni Sage
is Assistant
Brand
Manager –
Education
& Trade at
Thorpe

Park Resort. Visit www.thorpepark.com/schools

de Havilland Aircraft Museum

Explore aviation history, from the wooden wonder to an unusual autogiro

WHAT'S ON OFFER?

Take your group to visit the oldest aviation museum in the UK, dedicated to the preservation and display of de Havilland aircraft.

1 Mosquito

The de Havilland Mosquito DH. 98 aircraft is the only surviving World War II twin piston engine prototype to be preserved in the world. Designed and built at Salisbury Hall, the initial design was presented to the Air Ministry in September 1938.

2 DH.125

The museum's DH.125 was the first production aircraft, built at Chester in 1963 and used for liaison between Filton and Toulouse for Concorde. It was moved to the museum in 1979. In its various later

guises the 125 became one of the world's most successful business jets.

3 Queen Bee

The Queen Bee was devised as a low-cost radio-controlled target aircraft, for realistic anti-aircraft (AA) gunnery training. If it survived the shooting (as intended, by offset aiming), its controller would attempt to recover it for re-use.

4 Dragon Rapide

The DH.89 Dragon Rapide is an all-wood, twin-engine biplane passenger aircraft. The first flight of the prototype was from Hatfield by Hubert Broad on 17 April 1934. The museum's exhibit, registration G-AKDW, is being restored to flying condition.

5 Cierva C.24

Although the Cierva C.24 Autogiro G-ABLM looks like a helicopter, an



autogiro has an unpowered rotor and therefore is unable to hover or climb vertically. The aircraft was donated to the London Science Museum and is now on permanent loan to the museum.

www.dehavillandmuseum.co.uk T: 01727 826400 E: volunteers@dehavillandmuseum.co.uk



CALLING ALL JUNIOR AIRCRAFT PILOTS

GET CLOSE UP AND INTO MANY de HAVILLAND AIRCRAFT

— OPEN —
TUESDAY-SUNDAY
FROM SUNDAY 16TH
FEBRUARY 2020

We specialise in guided school tours of our collection

Contact our Curator for more information at curator@dehavillandmuseum.co.uk



The only museum dedicated to preserving the de Havilland heritage
de Havilland Aircraft Museum, Salisbury Hall, London Colney, Hertfordshire AL2 1BU



01727 826400 www.dehavillandmuseum.co.uk

Thorpe Park Resort

Explore STEM, D&T and more alongside the thrills of world-class rides...

DON'T FORGET

Thorpe Park Resort offers free downloadable pre- and post-visit learning resources that complement school trips, focused on STEM, computing, business and more.

1 Award-winning workshops

Want to add educational value to your trip? Why not book one of Thorpe Park's workshops. There are 12 available over a number of different subjects – STEM, business, marketing, guest care, human resources, design and technology, and ICT. It's all covered!

2 On-park Speed Sessions

What better way to learn than in a theme park? Learn about gravity and G-force on-park with a Speed

Session outside Detonator, then experience it yourself with your Speed Session fastrack.

3 TED talks

If you're a large school group, don't worry, there are education talks for you! TED talks are designed for groups of 70 or more, take place in the spacious Angry Birds 4D cinema, and focus on science, marketing, business and guest care.

4 STEM app

Want pupils to engage with learning whilst on-park but don't want to spend time in a classroom environment? The STEM app could be perfect for you! Pupils will complete tasks at certain points around the park, answering questions around STEM to increase their knowledge.



5 Record-breaking rides

Finally, don't forget the record-breaking rides! Whether it's riding the UK's first winged coaster, going from 0–80mph in under two seconds or braving the world's first 10-looping roller coaster, there's something for everyone!

www.thorpepark.com/schools

T: 0871 282 5123

E: tpschoools@thorpe-park.co.uk

£12
PER STUDENT!
INCLUDES FASTRACK

ADVENTURE WEEKS

EXCLUSIVE TO PRIMARY SCHOOLS

EVERY WEEKDAY
IN JUNE 2020

BOOK
NOW!

BOOK
NOW!

Add a KS2 workshop for £1.50pp

WHAT'S INCLUDED FOR £12pp?*

- Access to over 30 rides and attractions**
- FREE Adventure Weeks Explorer Activity Pack!
- Access to Key Stage 2 learning resources
- One Fastrack per student
- FREE teacher tickets***

Book now, pay later THORPEPARK.COM/SCHOOLS

Email us at TPSCHOOLS@THORPE-PARK.CO.UK

or call us on 0871 282 5123****

*tickets only available weekdays in June 2020, one shot Fastrack for a select ride is included with entry ticket **Height restrictions apply
 free teacher tickets in the ratio 1:5 *calls are charged at 13p per minute plus network extras

10 OF THE BEST

DAY TRIPS

There's lots that your group can learn in a few hours beyond the classroom – if you know where to go...

1 Cadbury World

With over 29 years' experience, and more than 2,000 school groups attending each year, Cadbury World offers unique educational experiences that provide a fascinating insight into the nation's favourite chocolate brand. Visitors can explore an assortment of interactive chocolatey zones, and there are a variety of informative curriculum-linked talks and workshops on offer, including Bean to Bar, The Maya and Design and Technology. Self-guided tours for school groups are currently available from just £8.50 per pupil. One free adult will be admitted for every eight children.

For more information and to book your school trip, visit www.cadburyworld.co.uk/schools-and-groups/schools



HIGHLIGHTS

At Cadbury World your pupils can explore the creation of the Cadbury factory, watch chocolatiers at work and even head into the Aztec Jungle...



2 Thorpe Park Resort

Thorpe Park Resort Theme Park welcomes schools from all over the country. In 2020 it will be running Adventure Weeks throughout June that include entry, fast-track access and an explorer's activity pack. There are over 14 rides and attractions for pupils under 1.4m tall, and schools can also choose to add a KS2 STEM workshop for just £1.50 per head. The park has a dedicated schools team to help you every step of the way – simply get in contact to start organising your next adventure.

For more information, email tpschoools@thorpe-park.co.uk or visit www.thorpepark.co.uk/schools



FREE RESOURCES
YPTE has a range of free learning resources for teachers to access on its website, covering topics such as rainforests and living things and their habitats.

3 YPTE

The Young People's Trust for the Environment (YPTE) is a charity set up to support children's understanding of the natural world. Working with young people, schools and parents, it aims to give children a real awareness of environmental issues such as climate change, pollution, deforestation and the plight of endangered flora and fauna. Your pupils need to know all of the facts in order to make their own decisions about how they want to shape their world for the future – the YPTE helps to equip them with the knowledge they need.

For more information, call **01935 315025**, email **info@yppte.org.uk** or visit **www.yppte.org.uk**

4 Imperial War Museum North

There are many reasons to visit the Imperial War Museum North, but what if you can't get there? Taking its collection beyond the walls of the museum itself, schools can book specially created loan box experiences inspired by the First and Second World Wars. These IWM loan boxes can be delivered by teachers in the classroom and include objects, stories and teaching materials to bring history alive for pupils across all key stage groups. Available for free from IWM North to schools within the North West region.

To book a loan box, get in touch at **learningnorthproject@iwm.org.uk**



5 British Motor Museum

The British Motor Museum offers a range of interactive museum walks, hands-on workshops and self-led activities that allow KS1 and KS2 pupils to experience the sights, sounds and stories of the British motor industry while engaging in a fun learning programme linked to the National Curriculum. There's a coach drop-off point outside the museum entrance, accessible toilets and dedicated learning spaces, including a lunch area. Workshop sessions cost £7 per pupil, and the museum offers a travel grant of up to £300 to help schools with the cost of their transport.

For more information, visit **britishmotor-museum.co.uk/schools** or call **01926 649 649**.



LOTS TO LEARN

The FSC can develop children's knowledge across the curriculum. There are courses on the Romans, Saxons and Vikings; animals and insects; and much more.

8 The Field Studies Council

The Field Studies Council (FSC) is the UK's leading charity sector provider of outdoor environmental education. Much of its work is based at one of its 17 field centres, which have an international reputation for high standards of primary school, secondary school and university teaching by expert staff and associated facilities. A broad range of courses are available, from fieldwork residentials and adventure trips to one-day experiences. The courses immerse pupils in the natural world, taking in its sights, sounds and smells by bringing subjects to life in the outdoor classroom.

For more information, email schools@field-studies-council.org or visit www.field-studies-council.org/courses-and-experiences



7 Frozen the Musical

Escape into the wonder-filled world of Arendelle to experience stories of love, hope and self-discovery, delivered with groundbreaking set design and special effects, exquisite costumes and sensational stagecraft from the producers of *The Lion King* and *Aladdin*.

Frozen is brought to the stage by a multi-award-winning creative team, led by Tony® and Olivier Award-winning director Michael Grandage, with book from Academy® and BAFTA Award-winning Jennifer Lee, featuring the cherished songs from the original film, alongside a brand-new score from Kristen Anderson-Lopez and Robert Lopez, the Grammy® and Academy Award®-winning songwriters behind the global phenomenon 'Let It Go'.

Discover more at www.FrozenTheMusical.co.uk





6 National Holocaust Centre

The National Holocaust Centre and Museum in Laxton, Nottinghamshire exists to share unique Holocaust survivor stories in order to educate and protect future generations. There's much to explore, including the Journey exhibition – journey.holocaust.org.uk (open from 2pm midweek term-time and 10am Sundays and school holidays). Inspirational Holocaust survivor speakers can offer first-hand accounts – check times and dates at www.holocaust.org.uk/speaker – while the picturesque memorial gardens comprise an acre of beautifully landscaped countryside featuring sculptures crafted by renowned artists.

For more information, visit www.holocaust.org.uk

9 KidZania London

Visit KidZania London in Westfield, Shepherd's Bush and your pupils will experience experiential learning at its best. KidZania is the indoor city for kids with endless, exciting, real-life career activities. These activities are designed to link back to the curriculum across PSHE, literacy and STEM. KidZania also runs unique educational events throughout the year to bring careers learning to life, like Parliament Week, STEM Week and its Careers Fair.

Prices start from £10 per student.

Email schools@kidzania.co.uk or visit www.KidZania.co.uk/education to book today!

TRY THIS!

There are a host of activities for children aged four upwards at KidZania – from preparing food in the Burger Shop to flying at the Aviation Academy.



10 The Postal Museum

The Postal Museum explores how the post has changed the way we live. Interactive sessions explore communication stories across the curriculum for all key stages, while its exhibition galleries are jam-packed with intriguing objects charting 500 years of social history. Pupils can hop aboard Mail Rail, travelling on a tiny train through the tunnels of London's hidden postal railway and testing their engineering ingenuity in the original train depot. Younger visitors can learn through play in Sorted! and have sack loads of fun delivering the post in the mini mail town.

To your first-class trip, visit www.postalmuseum.org/for-schools



Engaged **and** learning

Stay away from dull corridors full of dusty exhibits – here's how attractions across the country are ensuring your young learners enjoy exciting and interactive school trips...

LAUREN FRANCIS

Dusty museums filled with throngs of disinterested school children biding their time until they return to the coach are things of the past, by and large. And rightly so. Today, schools are looking for unique and engaging trips, affording students both access to knowledge that supports their studies, and experiences that enrich their lives. So how are attractions stepping up to the challenge?

Teachers have long accommodated a range of learning styles within their classrooms to engage even the most distracted. The implementation of Visual, Auditory and Kinesthetic (VAK) elements into a lesson allows students to access a topic using their own preferred learning style, something which was often missing from traditional school trips. But educational attractions have revolutionised their offerings in recent times, creating active and exciting features that bring every aspect of the curriculum to life.

Beyond the classroom

Many educational attractions around the country offer experiences that simply cannot be replicated in the classroom. Cadbury World is a case in point – in the KS2 Design and Technology talk, for example, pupils get hands-on with real-life Cadbury chocolate moulds used in the Bournville Cadbury factory,



enabling them to uncover the fascinating process of product development. The session gives them a sense of the heritage of the brand and its place in British culture whilst allowing them to be creative and feel a part of something that has been in their homes for generations.

Adding excitement

In the best museums and attractions, education is not confined to designated learning spaces. Students tend to be less engaged by traditional classroom settings that are separate from more vibrant and intriguing areas, and spending too much time in the former risks the most educationally

rewarding elements of a trip being wasted. Instead, by creating an inviting cohesive learning environment, an attraction can help children to associate what they have learnt with the excitement of the trip as a whole.

The key is to create moments of impact in the main attraction that can be linked to deeper knowledge within an educational talk or workshop – this enables students to retain information for longer and apply what they have learned a lot faster. For example, the 'Bean to Bar' talk at Cadbury World is complemented by the opportunity to temper chocolate by hand within the main self-guided tour of the

attraction. Pupils can compare this experience to how chocolate is made using machinery today, and discuss how chocolate making has developed since the factory first opened.

Interactive learning

The inclusion of interactivity and technology can make or break a school visit. An attraction may offer a plethora of interactive activities and elements to allow students to 'collect' information for use back at school; pupils may engage extremely well with them and routinely describe how much fun they had interacting with all the media. However, staff sometimes later

“In the best museums and attractions, education is not confined to designated learning spaces”

POINTS TO REMEMBER

- Look for unique and meaningful attractions that allow students to both access knowledge that's beneficial to their learning and enjoy an enriching experience.
- Try to combine engaging, interactive elements with a curriculum-focused talk or workshop – this approach allows students to retain information for longer and apply that knowledge more successfully.
- While classroom learning is imperative to developing skill sets and a knowledge base for pupils, great school trips can create lasting memories that will inspire pupils for years to come.

find that the information held within an activity has passed the children by.

By contrast, through combining older technologies with updated systems, attractions can create an active experience which is more memorable for students of all ages. For example, in Cadbury World's Purple Planet zone, the opportunity to help 'grow' a virtual cacao tree, which is not native to the United Kingdom, gives a greater appreciation for the farmers, embeds the practicalities of cultivation and supports the retention of this information. Through the implementation of seemingly simple levers and buttons linked with enhanced visuals and feedback techniques, an experience like this engages students and makes them active participants in their own learning.

Building new skills

When it comes to educational attractions, innovation doesn't have to be limited to screen-based technology; simple and low-tech techniques can have a great impact. It should be remembered that many older museums and attractions are limited by how much they can alter their sites, be that due to the amount of space available, heritage constraints or simply funding.

For example, many engineers remember playing with Lego as children and regard the toy as what inspired their future career path; many attractions harness its potential as a unique element of learning too. By encouraging students to use their creativity to think outside the 'brick' and apply their problem-solving skills to situations not traditionally linked with the material they are

working with, these attractions support classroom teachers in instilling a sense of the potential everything has when you look at it from a different angle.

Dressing up

Many attractions offer the opportunity for students to dress-up and become part of the world they are studying. While it may be considered fairly standard or 'basic', the act of dressing up generates curiosity and creates memories that support pupils' learning about a topic. For example, the Maya are a key part of the Key Stage 2 curriculum; at Cadbury World, by allowing pupils to dress up as Mayan royalty or common folk and involving them in some of the traditional activities, such as the team sport Pok-a-Tok, we're able to bring this ancient culture to life and make Mayan history feel less like a story from a book.

Behind the scenes

Finally, inspiration can also come from seeing the cogs behind the wheel. Behind-the-scenes tours of attractions, or access to the creative process behind a stage show, often provides as much impact as a fully interactive, technologically advanced workshop. By giving pupils a chance to see what goes into a theatrical production, the work that goes into designing and maintaining a roller coaster, or the care and dedication that staff

have when nurturing various species at botanical gardens, safari parks, aquariums, etc., we can help them develop an understanding of the value of education in helping them to achieve their goals and how they can work towards their intended career path.

Final thoughts

Traditional museums still have a place in developing the next generation of pioneers; by looking back to where we have come from and the visionaries of the past and finding a way to relate their work to society today, we can spark the light of curiosity in our children, who will hopefully be the inspiration for exhibitions and learning in the future. But developing new and exciting ways to engage pupils is vital. While classroom learning is imperative to developing skill sets and a knowledge base for students, school trips can create lasting memories which should inspire pupils for years to come.



Lauren Francis is Education Programme Development Coordinator and DSL at Cadbury World. Visit cadburyworld.co.uk

School Visits to Cadbury World



**BRAND
NEW
D&T
WORKSHOP**

- CURRICULUM LINKED TALKS AND WORKSHOPS
- PROFESSIONALLY TRAINED TEAM
- RESOURCES AND WORKBOOKS
- FREE PREVIEW VISIT
- GROUP RATES

“Cadbury World are **fantastic** in providing enrichment learning opportunities for students.”

Sirius Academy

**CHOC
FULL**
of discovery



PRICES FROM JUST £8.50 PER PUPIL

To book, call: **0121 393 6004** or email: **cwe@mdlz.com**





LEARNING JOURNEYS

Workshop 1 – Design and Technology

Pupils will discover the fascinating process by which Cadbury develops new chocolate bars, and learn how both wrapper and advertisements are linked to the design of each bar. They'll also take a closer look at Cadbury packaging and how this has evolved over the last 100 years, work in small groups to design their own wrapper, and see the real-life Cadbury chocolate moulds used in the Cadbury factory at Bournville.

Workshop 2 – The Maya

Pupils will be introduced to the great city of Chichen Itza and discover Mayan myths and legends about how humans were created. They will also see real-life cocoa pods filled with the cocoa beans that were so valuable to Mayans in c. AD 900, as well as the wooden whisk they used to make their favourite chocolate drink. Lucky children even have the chance to dress as a Mayan!

Workshop 3 – Bean to Bar

Pupils will discover the ingredients used to make chocolate and where they originate from around the world, whilst taking a close-up look at real Ghanaian cocoa beans. As well as having the opportunity to dress up as real factory workers, they will get hands-on with real-life chocolate moulds and learn how the different Cadbury products are created. Exclusive footage from inside the Cadbury factory provides pupils with a glimpse into the brand's chocolate-making process.

WE LOVE TO LEARN

It's choc-full of discovery!

Explore history, design and much more with a day out at Cadbury World

With over 29 years' experience and more than 2,000 school groups attending each year, Cadbury World offers unique educational trips that provide a fascinating insight into the nation's favourite chocolate brand. There's an assortment of interactive chocolatey zones to explore and a variety of informative curriculum-linked talks and workshops, including Bean to Bar, the Maya and Design and Technology.

The one-hour talks and workshops complement your group's day out perfectly, expanding pupils' knowledge on a range of topics. Self-guided tours only are also available, currently priced from just £8.50 per pupil, with one adult admitted free for every eight children. All of this makes Cadbury World the perfect day out for schools. To find out more and to book, visit the website quoted below.

CURRICULUM LINKS



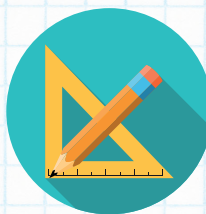
HISTORY

In Bull Street, the Cadbury Story and the Bournville Experience zones, uncover the philanthropy of the Cadbury family, and how their beliefs created a holistic approach to industry.



GEOGRAPHY

Explore the Aztec Jungle and uncover the journey of the cocoa bean all the way from South America to Europe, into the heart of Victorian England.



DESIGN AND TECHNOLOGY

Throughout the tour, discover how the manufacture of chocolate has changed since Cadbury made its first bar, and how chocolatiers made chocolate by hand in the past.

www.cadburyworld.co.uk/schools-and-groups/schools
E: cwe@mdlz.com T: 0121 393 6004



“Residentials can be transformational”

The research says that taking pupils away from home and school for several days can have a profoundly beneficial impact, as the School Journey Association explains...

Children grow up a great deal over the course of their primary years. From tiny entrants to Reception, not yet out of the Early Years Foundation Stage, to all-but-teenagers come the end of Year 6, they encounter a wide range of new experiences and acquire no end of knowledge along the way – but you can be sure that amongst the memories they leave with, those lodged most firmly will include more than a couple of school trips.

The opportunity to escape the classroom, to travel to a new place and see new things never fails to make an impression, but understandably those that tend to stand out are the excursions of the most ambitious scope – and at the top of that list, you'll find residentials.

A residential trip is something of a rite of passage in many schools. For some children those few nights away will be the longest they've ever spent apart from their parents and siblings, and for all it will be a new and exciting taste of independence, with considerable educational benefits, as we'll cover in more detail below. For teachers, particularly those planning a residential for the first time, it may feel like a daunting

prospect – but with the right planning and, if you prefer to avoid the DIY route, the right provider, it's possible to take the stress out of the process and put the focus firmly on the many positives.

Positive impact

For primary and secondary educators alike, that residential trips are worthwhile investments of time and money is often something that is recognised instinctively – that is apparent by observing children's reaction to them both whilst they're in progress and afterwards, when all have returned to the classroom – but new research from Learning Away, a consortium of 18 organisations whose 'Brilliant Residentials' campaign has done much to highlight the value of residential trips, serves to illustrate just how much of a difference they can make;



along with growing respect for each other. Children also developed proactive behaviours in the tasks, in community life and socially.”

Another talking point was that residential trips appear to sustain attainment amongst pupils classed as vulnerable – those who, for personal and family reasons, were “likely to underachieve in relation to their predictive grades”.

According to Chris Loynes of the University of Cumbria, “The positive impact on attainment for ‘vulnerable’ pupils is an important finding. The explanation put forward by teachers was that the confidence gained whilst away on the residential, coupled with enhanced relationships with peers and staff, compensated for the negative impacts on learning experienced outside of the school's control.”

This latest study backs up the results of earlier research on the impact of residential trips – that they are a fantastic option whether you're looking to boost wellbeing, resilience, self-belief, peer-to-peer and student-to-teacher relationships, or most likely, all of the above. The experience of being with others in such a setting can enrich sociability, increase confidence and encourage the sharing of ideas – and that's without even

indeed, to Learning Away they are nothing less than “profound and transformative”.

The research, which was conducted by the University of Cumbria, involved Year 6 pupils from eight schools in Wigan, all of whom took part in a four-night residential trip. It identifies a positive impact on children's progress, noting the trips' capacity to enhance and transform relationships, increase engagement, and help to develop mindfulness and resilience, with enhanced metacognition. The schools that took part reported to researchers that “the nature of a residential enabled children to find new ways of being friendly, [with children] able to develop friendships across normal social groups. They experienced a sense of achievement, a growing sense of motivation to learn and be part of the community,



“Residentials can be an instrumental tool in a school’s portfolio as they look at how they can develop their students’ character and resilience”

Asa Gurden, chair, Learning Away

THE BENEFITS

considering all the knowledge that children can acquire linked to a residential’s location and focus.

Planning your trip

Regardless of the benefits, there’s no escaping the fact that a residential trip is a significant investment. You may be able to access funding – for example, as an educational charity, the School Journey Association (SJA) aims to support disadvantaged children and subject to criteria, is able to provide grants of up to 50% towards the cost of a residential trip. Additionally, all FSM students receive a £50 reduction when you book with SJA. But even if you can, it’s important to do your research and ensure that you’re going to get value for money and the most possible educational impact.

Learning Away stresses the importance of planning, and of integrating any residential trip within the curriculum. If you know the learning outcomes you’re

looking to achieve, you’re far better equipped to find the right residential for your children. It also highlights the benefits of providing children with a wide variety of bespoke activities to help reach your intended objectives – particularly important as part of efforts to meet the needs of children who find traditional academic learning more of a challenge.

Schools can achieve these aims by working on their own (which provides maximum flexibility) or with an experienced provider, though it’s vital to choose a company that’s willing and able to work with you to plan a trip that will work for you and your group. The advantages of choosing an organisation to support you include easy access to expert staff, activities and the facilities you need to look after your pupils. Many grant access to fantastic locations too, or can help you arrange transport to your chosen destination, as well as providing vital pre-visits to help staff with

their planning and risk assessment (the SJA, for example, offers free overnight accommodation for the group leader in advance of the visit for this purpose, if needed).

Get started!

Whichever approach you opt for and wherever you’re headed, be sure to embrace the potential of residential school trips. They’re unlike anything else, and the benefits to children and staff can’t be overstated. They present certain challenges, but there’s a wealth of support and advice out there to help you overcome any difficulties and enjoy the benefits.

The School Journey Association is an educational charity with more than 100 years’ experience providing school trips. To explore options for residentials in the UK and overseas, call 020 8675 6636 or visit www.sjatours.org

According to Learning Away, a well-planned residential provides...

- An overnight stay and an intensity of experience that other trips can’t match – they offer a new environment with new rules.
- A new context for relationships – they can break down barriers between staff and pupils, and between pupils, increasing trust and building a sense of community.
- Opportunities to experience success – practical and physical challenges mean that not only the academically gifted will succeed, boosting engagement and motivation.
- New ways of learning – there are opportunities to give pupils greater levels of responsibility, and to explore unfamiliar teaching methods.

Source: *Brilliant residentials and their impact on children, young people and schools* – download at bit.do/TSTpbr



London's Defining
Landmark

Learn inside the heart of London

Hands-on workshops. Guided tours.
Discover the science, history,
engineering and architecture
behind the world-famous icon.

**New KS1 and SEN workshops
now available**

Book your school trip at
towerbridge.org.uk/learning



#insidetowerbridge



V&A

PRIMARY SCHOOLS

Free Hands-on Sessions
Free Resources
Teachers' Events and More

Book Now
vam.ac.uk/primary

School Journey Association

Five ideas for your primary school's next trip, at home and abroad

WHAT'S ON OFFER?

The SJA offers funding of £50 to all FSM children, plus additional funding of up to 50% towards the cost of trips for disadvantaged pupils.

1 Activities

SJA's activity trips are suitable for all age groups and a fantastic way to motivate pupils, whilst teaching them independence, self-belief and many other life skills. On offer are day and residential trips to accredited activity centres throughout the UK and France.

2 Belgium

Belgium is an ideal destination for groups to have their first taste of European culture. This tiny country boasts diverse landscapes ranging from the deep Ardennes forests and hillier regions, to sandy beaches

with dunes and its famous First World War battlefields.

3 France

France is a popular destination for primary school groups that's easily accessible by coach and Eurostar train services. Available packages include a wide variety of day and residential trips with secure accommodation and exciting attractions specific to school visits.

4 The UK

From Edinburgh to London, Devon to Northumberland, SJA has a wide range of fun, learning-focused trips. The team works with you to ensure your selection is right for you, whether you're planning Y3's first trip away or a post-SATs adventure.

5 Spain

Spain is a country of great cultural and regional diversity and offers a variety of



opportunities for school groups to explore art, history and the natural environment, practise fledgling Spanish skills, and experience the diverse food culture and unique sporting heritage.



www.sjatours.org T: 020 8675 6636 E: office@sjatours.org

Educational Trips in the UK and Europe

A £50 reduction to all FSM students



Providing exciting educational tours, designed to bring subjects to life.

We believe that every single child should be able to participate and gain the benefits from an educational school trip and as a registered charity, we can provide FINANCIAL ASSISTANCE to children where needed.

LEARNING • FUN • INSPIRATIONAL.

020 8675 6636 office@sjatours.org
www.sjatours.org @SchoolJourneys



Registered Charity 312526



10 TO CONSIDER

INSPIRING IDEAS

Featuring planes, trains and automobiles, fantastic workshops, rare creatures and much, much more...

1 de Havilland Aircraft Museum

Your pupils can experience fun and engaging workshops at the UK's oldest aviation museum, dedicated to the preservation of the de Havilland heritage. They can get close up and inside many of the exhibits and aircraft, and enjoy bespoke workshops, tailored to your topic, with many cross-curricular elements as well as opportunities to practise soft skills – critical thinking, teamwork, listening, following instructions and much more. For schools, tickets are priced at £7 per child and entry is free for teachers/supervisors.

For more information, email Learning@dehavillandmuseum.co.uk or visit www.dehavillandmuseum.co.uk



DID YOU KNOW?

English Heritage's sites include the field on which Harold Godwinson and William of Normandy clashed in 1066.



2 English Heritage

English Heritage provides schools with the chance to explore the story of England at hundreds of unique historical sites. You can lead your own day of learning on a free visit to any English Heritage site, or book an expert-led workshop to bring the past to life and support learning across a wide range of subjects. Free planning visits are available to help you get ahead on organising your trip, as are free downloadable teaching resources, designed to link learning on the day with pre- and post- visit classroom activities.

For more information, visit www.english-heritage.org.uk/education or call 0370 333 0606.



3 M&M Theatrical Productions

M&M Theatrical Productions' enchanting Classic Literature Adaptations are presented in an easily digestible and interactive format, creating an inspiring way to promote reading for pleasure and to learn about the past, while engaging the children in tales involving characters from many different social and cultural backgrounds. These productions are followed by a Stagecraft workshop – an exciting way to further enhance the experience of the visit by offering older children a practical and unique view behind the scenes of the production they have just enjoyed, broadening their knowledge of the arts in combination with STEM subjects.

For more information, visit www.magicoftheatre.com

4 Epic Outdoors

Epic Outdoors is an adventure activities licensing service and Duke of Edinburgh's approved adventure provider. It specialises in developing personal and group skills through multi-activity programmes, and currently provides activities for over 2,500 young people each year from schools and youth organisations. Its programmes in the Lake District, North Wales and the Peak District cover everything from gorge walking, canoeing and climbing to mindfulness, wild camping and traditional storytelling. Full support is provided for schools from pre-visits for staff, students and parents to curriculum blending and post-residential review trips.

To find out more, call **01539 482 218**, email info@epicoutdoors.co.uk or visit www.epicoutdoors.co.uk



STAY HERE

Epic can provide accommodation according to your requirements, from its tented village to wild camps, a hostel or hotel residences.



5 Magna Science Adventure Centre

Magna Science Adventure Centre is a hands-on experience with interactive exhibits and fascinating displays. Pupils can explore the wonders of science, technology and industrial history in four pavilions: Fire, Water, Earth and Air. These are crammed with over 100 exciting activities – invite your group to discover the amazing nature of water, operate real diggers, witness a fire tornado and even explode a rock face. There's also a chance to discover South Yorkshire's steel-making heritage in 'The Big Melt' experience – a thunderous pyrotechnic show.

For more details, head to www.visitmagna.co.uk/education – or to book, call **01709 723 116** or email bookings@magnatrust.co.uk



6 Ambassador Theatre Group

ATG's Creative Learning and Community Partnerships provide dynamic cultural education, by working with top West End professionals to encourage creative thinking, problem solving, resilience and the ability to find solutions via engaging bespoke workshops – such as acting, singing, stage combat, technical theatre and more. Whether your trip is part of the curriculum or a well-earned treat, the workshops are grounded in subject knowledge and understanding; pupils' creative capacity will be nurtured and their personal, social and academic development greatly enriched.

For more information, email **WestEndCreativeLearning@theambassadors.com** or visit **www.atgtickets.com**



DID YOU KNOW?

Wingham Wildlife Park is home to the only Moon bears in the UK – you can find Aroon and Mika in Little Himalaya behind the dinosaur zoo

7 Wingham Wildlife Park

With over 170 species, 190 talk topics (covering everything from individual species to recycling, palm oil, dinosaurs, reptiles, invertebrates, nocturnal animals, birds and much more), pre-designed itineraries, an outdoor play area, free lunch lockers and plenty of picnic areas (both open and under cover), there's not an animal-based education destination in Kent that can offer more variety than Wingham Wildlife Park. Don't just take their word for it, though – visit **www.winghamwildlifepark.co.uk** for more details and to read testimonials from your fellow school teachers.



LEARN MORE

Read Sam and Joseph's article this issue for their thoughts on why bringing experiences in is a great alternative to off-site school trips.

8 Teach Rex

Teach Rex's Sam Bryan and Joseph Parsonage use current Ofsted guidelines, the curriculum and their experience in teaching to create the optimal learning environment. Alongside their workshops they provide a range of materials designed to connect the sessions to learning in science, English and IT, to help support further learning once they have left your school. Get in touch to find out how Teach Rex can create a bespoke workshop for your class today.

Call Sam (**07921 859 466**) or Joseph (**07585 705 967**), email educate@teachrex.co.uk or visit www.teachrex.co.uk

9 The Kings Ferry Group

You can help your students live and learn outside of the classroom with help from school transport specialists The Kings Ferry Group. Its School Service Plan provides schools with everything they need to plan and provide incredible visits for pupils – from high quality, safe and reliable coach hire to unbeatable school trips tailored to key stage learning. The company can provide you with a fully managed school coach hire experience that lets you do what you do best: teach, inspire and create unforgettable memories for both you and your pupils.

For details, call **01634 377 577** or visit www.thekingsferry.co.uk/schools



10 Eurotunnel

For children, a school trip is often the highlight of the year, but it comes with lots of responsibility for teachers. If you're staying within Europe there are real advantages to going by coach – keeping everyone in one space, rather than battling with public transport. Did you know that if you cross the channel using Eurotunnel Le Shuttle, everyone stays on the coach, and in 35 minutes you're in Calais? There are loos, cafés and shops at the terminals, and both borders (UK and French) are negotiated before you leave the UK, so once you arrive in France, you drive straight off and get on with the journey. The simpler you make it, the better the chance for teachers to enjoy it too!

Find out more at www.eurotunnel.com/uk

ZSL

**LONDON ZOO
WHIPSNADE ZOO**

A GRRREAT DAY AT THE ZOO AWAITS

**NATIONAL
CURRICULUM
LINKED
EDUCATION
SESSIONS**

BOOK NOW FOR A SCHOOL DAY LIKE NO OTHER

zsl.org/education
school.bookings@zsl.org

0344 225 1826

ZSL

**LET'S WORK
FOR WILDLIFE**

6 THINGS TO DO AT...

ZSL Whipsnade Zoo

Samantha Viner illustrates why the UK's largest zoo is the wildest school trip destination

BOOK TODAY

A trip to ZSL Whipsnade Zoo is the perfect way to put current environmental issues into context whilst empowering pupils to make a difference.

1 Visit the butterfly biome

The tropical Butterfly House, one of the largest butterfly biomes in any UK zoo, is home to 30 different species from around the world. Your pupils will witness every stage of the caterpillar/butterfly life cycle in the Metamorphosis Zone and encounter zebra longwing and Madagascan comet moths overhead, learning how colour plays an important part in a butterfly's life. Why not take a 'Life cycles' workshop to show pupils how a variety of animals grow, develop and produce offspring?

2 Discover fantastic fish

Head to the brand-new aquarium and immerse your pupils in the wonders of the underwater world. Children will learn how mangrove killifish can survive out of water for 66 days and even get a behind-the-scenes look at scientists at work. Challenge your pupils to answer the question – do fish live in trees? They're sure to be amazed!



3 See rare species

A key part of international conservation charity ZSL (Zoological Society of London), Whipsnade Zoo is home to many critically endangered animals that ZSL is working to protect in the wild. Coming face to face with endangered animals is a great introduction to the threats they're facing. Take part in an 'Endangered animals' workshop to learn more, including what ZSL is doing to help and how pupils can play a role. They may even meet an endangered animal up-close!

4 Head down to the farm

In the zoo's Hullabazoo Farm, young visitors can meet animals ranging from miniature donkeys and alpacas to pigs and goats – and explore these creatures' secret and often surprising lives in the wild. This interactive farm allows pupils to get up-close and meet the animals. There's also plenty of opportunities to meet ZSL's expert keepers and get the inside story on their work.



5 Meet the elephants

Homed in 30 acres of rolling paddocks, visit the endangered Asian elephants and learn how habitat loss and poaching is seeing populations decline. Pupils will discover the Earth's largest land animals, learn about their herbivorous diet and see how they measure up compared to the size of this great mammal.

6 Explore the Serengeti

Head to the home of a pride of African lions. Pupils can follow a village trail visiting a traditional Maasai dwelling and goat enclosure (boma). They can make their way to see the lions of the Serengeti and learn how herders share the environment with these amazing animals. You could add a 'Habitats' workshop to your visit and delve into the different habitats from around the world and what animals live there.



Teach your class TO BE GREEN

It's never been more important to instil environmental awareness in children, and your local zoo is the perfect place to connect them to the issues affecting the world...

HOLLY BESTLEY

As the severity of the challenges facing the environment continue to mount and sustainability climbs the global agenda, fostering environmental awareness in children from an early age has never been more important. As the generation likely to be living with the long-term consequences of urgent issues such as global warming and biodiversity loss, starting the conversation about how they can help is essential. This will normalise lifelong environmental consideration and will also combat misconceptions before they are fully formed.

Highlighting how individual actions can have global impact, as well as using narratives that pupils may have encountered in the media, will give context to a variety of topics across the curriculum and relate world issues to their own personal experiences. The myriad of opportunities to link these issues to their own lives and choices will also help build pupils' science capital – the best way to encourage an interest

in science later in life. This will encourage an ongoing interest and understanding of environmental issues thereby equipping them to make conscientious choices.

Taking it further, environmental change or citizen science campaigns in school or the local area are a great way to help pupils feel a sense of ownership and achievement over a project and the impact they can have, motivating them to continue these actions into the future. You never know, one of your pupils might be so inspired they go on to be the next leading conservationist of their generation!

Beyond the classroom

A trip to a zoo or safari park is a brilliant way to bring learning about the environment to life. Coming nose to nose with the very species already at threat from these issues will create a lasting emotive impact. By helping to shift the lens from the impact on the

individual to the impact on the planet and its inhabitants (human or animal), it can encourage ideas of global citizenship.

As the dramatic decline in the world's wildlife continues, modern zoos aim to safeguard the remaining individuals, to educate people about the threats they face and to fund and enact conservation efforts. They are the perfect places to explore the real-life consequences of environmental challenges, as well as what's being done to try and combat them.

Zoos and safari parks present countless opportunities to draw learning from many different subjects, from science and maths to art and English, allowing you to explore environmental issues in a truly cross-curricular way. So here are our top tips for planning a visit.

Introduce the key theory in the classroom

Structure your trip around the focus topic. Introducing key aspects in the classroom before you venture to the zoo so that learning opportunities are maximised. You could also make the most of the workshops that many zoo education teams offer on these topics to consolidate learning on the day. If you can't find information on the relevant topic on their webpage, get in touch! Many teams are happy to adapt their sessions to

your needs.

Set challenges whilst on site

Structure your day around exploring your topic using the information available on-site. Signage will nearly always display the status of different species in the wild, what threat they're facing and what's being done to combat this. And these sites are also full of staff who will be more than happy to answer questions if the information is not immediately visible – their expert knowledge is free, so make use of it.

Activity ideas

Climate change – Label the adaptations of animals from cold or arctic habitats and discuss how they would be impacted if this habitat changes.

Pollution – Select animals from around the site that live in the same habitat and arrange them in a food chain. Discuss how pollutants, from plastic to chemicals, might pass up this chain if consumed by the lowest organisms. Look at waste in the pupils' pack lunches on the day and discuss how that might impact local wildlife if it wasn't disposed of properly.

“Coming nose to nose with species already at threat from environmental issues will create a lasting emotive impact”



HOW TO USE THE ZOO

- Bring pupils nose to nose with the animals impacted by environmental issues to create a lasting emotive impact.
- Explore the topic in class first to focus your trip – or make the most of the zoo's education workshops.
- Set pupils challenges during your visit encouraging them to read the signage and discover answers for themselves.
- Ask staff around site – their expert knowledge is free!
- Take your learning back to school and explore it in different ways to launch an environmental campaign.

Sustainability and living green

– Ask pupils to log what sustainable activities they notice taking place around the site. From recycling bins to a ban on single-use plastic, most zoos and safari parks are striving to reduce their own impact on the planet. For example, here at ZSL Whipsnade Zoo all our herbivore poo and other compostable waste is compacted down and made into fertiliser for the grounds. Encourage them to ask staff for examples!

Habitat loss – Identify different habitats present in

the animal enclosures (from rainforests to savanna) and list reasons why these habitats might be being lost. Label how different animals are adapted to live in specific habitats and discuss why they can't change habitats if theirs disappears.

Overarching – Create a log of which animals are impacted by each threat and determine which threat is most widespread amongst these species. Use results to illustrate that most species are facing more than one of these issues. Older pupils could link

these species with the species' geographical location to see where in the world these issues are having the largest impact.

Back in the classroom

Extend cross-curricular learning from your trip back in the classroom. Task students to research what conservation projects exist to help the animals they encountered and to present their findings to the class. In English, pupils could use what they learnt to write a persuasive letter requesting actions from your local MP. In art, create a

campaign poster persuading people in your neighbourhood to take action. Or join these all together – see what actions could be taken at school on your issue and get the class to plan and carry out a campaign to get the rest of the school on board. They'll be amazed by the impact simple changes can have if enacted by many people!

Holly Bestley is senior learning officer at ZSL Whipsnade Zoo, the UK's largest zoo, home to hundreds of animal species for your pupils to discover. Visit www.zsl.org/education to start planning your next school trip.

Our commitment to sustainability



For every school trip booked with NST, a Maya nut tree will be planted in Peru supporting reforestation, providing benefits to local communities and supporting biodiversity. To guarantee carbon emission reductions, we've pledged to offset an additional tonne of CO2.

Learn more about it at

www.nstgroup.co.uk/corporate-social-responsibility

Inspire learning with an exciting school trip experience with NST

- We've been creating tours that inspire & educate children for more than 50 years
- We make it easier for you by organising your transport, accommodation & visits
- 24-hour support whilst on your trip is always just a phone call away
- Safety is at the heart of every NST school trip and we're ABTA & ATOL protected too



WE'RE THE EXPERTS

“With you every step of the way”

Discover a world of learning beyond the classroom with the help and reassurance of the school travel experts at NST

Why are NST the experts in school trips?

We have been creating tours that inspire pupils for over 50 years. Founded in 1967 by a maths teacher, who recognised the need to help organise school trips we are now the largest educational tour operator in Europe. Our experienced and knowledgeable team work closely with teachers to ensure their trip meets their curriculum requirements and the needs of their group.

What sets you apart?

Our destinations have been chosen with primary school groups in mind. Our safe, secure accommodation options and range of engaging visits provide an ideal introduction to the world outside the classroom. From the moment you enquire you'll have your own dedicated contact who has extensive school travel knowledge and will go the extra mile to create a tour that enables your pupils to understand how they fit into the world around them.

What support do you offer?

By talking to teachers and following the customer journey, we have the resources available to help you at every stage of the school trip process:

Tailor-made quotes – no hidden costs, incorporating all visits, transportation, pupil-friendly accommodation and insurance.

Flexibility – we understand that it can take some time to gather deposits; just provide us with a realistic timescale and we can hold all arrangements for you until your deposits have been received.

Online trip organiser & travel app – all your paperwork in one place; features include a handy personalised tour checklist, instant access to your travel documents whilst on your trip, including contact numbers, and a map of the area with your hotel and visits pinpointed for you.

Locate my trip – using GPS technology, parents and teachers can receive live updates on your group's tour location with NST's trip tracker.



EXPERT PROFILE

Name: Michael Knowles

Job title: Senior Educational Travel Advisor

Area of expertise: Creating tailor-made experiences for primary school groups

Best part of my job: Hearing the fantastic feedback we receive from teachers

24/7 support – whilst you're away, benefit from the support of NST's representatives, guides and escorts in many of our destinations, plus our 24-hour emergency cover.

What are the benefits for pupils and teachers?

There's no substitute for a real experience in the wider world to inspire pupils' imaginations. Learning outside the classroom not only boosts pupil engagement with learning, but also improves their knowledge, skills, understanding, self-confidence and wellbeing. What's more, a school trip fosters deeper relationships and boosts cohesion and a sense of belonging. On top of this, the experience will help develop teachers' pedagogical skills.

What feedback have you received?

Our teachers regularly leave us feedback telling us they have found their trips to be a perfect balance of fun activities and educational content. We pride ourselves on retaining our one-to-one support and providing exceptional customer service, and as such we've been awarded the Feefo Gold Service award – an independent seal of excellence that recognises businesses for delivering exceptional experiences, as rated by real customers.

ASK ME ABOUT

TAILORING YOUR TRIP - I can create a tour itinerary around any theme, from Tudors and Victorians to science, nature, maths computing and languages.

SAMPLE ITINERARIES - Looking for inspiration? I can provide all the information you need with day-to-day timings in any destination of your choice.

EDUCATIONAL RESOURCES - I can offer you exclusive educational materials to use on your trip and provide resources for pre-and post-trip tasks too.

www.nstgroup.co.uk T: 0845 293 7979 E: info@nstgroup.co.uk

8 ways to plan a STRESS-FREE TRIP OVERSEAS

There's no escaping the fact that organising your pupils' first adventure abroad is more daunting than booking a day at the local zoo – but fear not, help is available...

STEVE CRAVEN

There's something about great school trips that inspires young minds. The best are more than just an opportunity to escape the classroom; they can create positive memories that endure long after pupils step off the coach at the end of the day or week, and open doors children may not even have known existed. Time spent overseas, in particular, has the capacity to ignite an interest in learning languages, or about the wider world and its many cultures.

Like most things worth doing, though, school trips require a measure of hard work, and that's particularly true when you're heading outside of the UK. There is lots to consider, and you could be forgiven for having reservations about taking the plunge – but with good planning and preparation, success can be easily achieved. It's certainly well worth the effort to give your pupils a unique learning experience with far-reaching benefits when it comes to their education and development.

So, here are eight points to help get you started...

1 Speak to your class

Taking pupils on a residential overseas can help ingrain learning as well as allowing children to build friendships and develop their confidence and social skills. So, first things first – think about what you want your pupils to learn. Where would be an interesting place for them to learn? Think about the wider skills you want your pupils to take away with them. Can you continue the learning back in school? Speak to the children and get to know what they find exciting – if you can link this to their learning, they'll instantly be engaged.

2 Don't DIY!

There's no sense in making things more complicated than they need to be. By choosing an LOTC-accredited tour operator with ABTA and ATOL bonding, not only will you have financial

protection, you'll also have the reassurance of a good quality educational provision and effective risk management. Having this quality standard means the red tape associated with a school trip is reduced. It is possible to organise your school trip independently; however, you'll then have all the responsibilities of a travel company, both legal and financial.

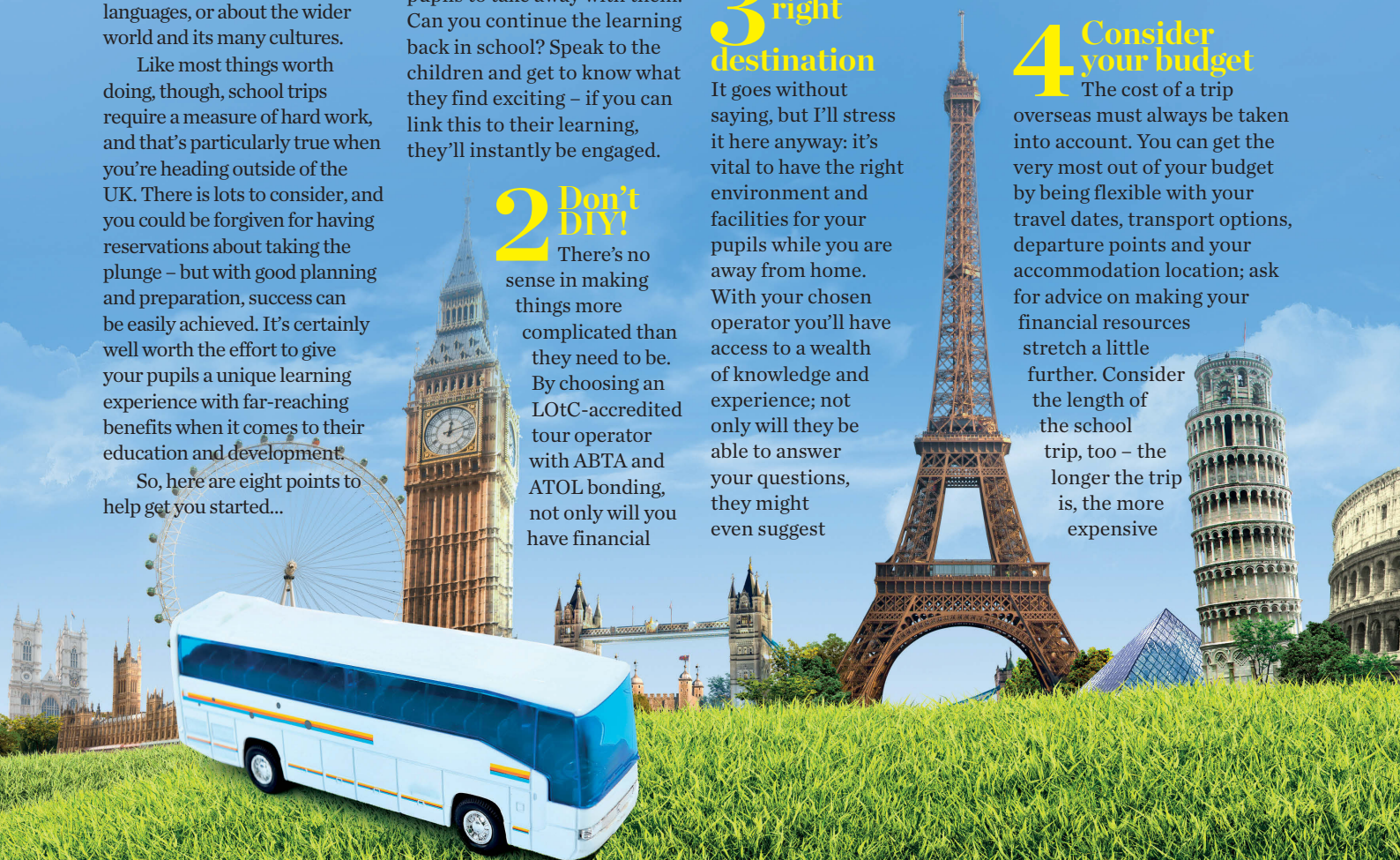
3 Choose the right destination

It goes without saying, but I'll stress it here anyway: it's vital to have the right environment and facilities for your pupils while you are away from home. With your chosen operator you'll have access to a wealth of knowledge and experience; not only will they be able to answer your questions, they might even suggest

options you hadn't already thought of. They'll be able to tell you what other teachers have chosen to do on their trips and give you an insight into the feedback they've been given too. As always, planning is key: work closely with your provider to identify what you want to achieve, where and when you want to go, your learning objectives and budget, and let them put together a quotation that's tailor-made for you.

4 Consider your budget

The cost of a trip overseas must always be taken into account. You can get the very most out of your budget by being flexible with your travel dates, transport options, departure points and your accommodation location; ask for advice on making your financial resources stretch a little further. Consider the length of the school trip, too – the longer the trip is, the more expensive



it will be. Many visits are free of charge and filling your trip with these options will help to keep the cost down. Try to include a mix of fun and educational visits without overloading your itinerary.

5 Get a preview

It makes sense to take advantage of a preview visit to be sure you're getting exactly the right trip before you travel. Most tour operators can arrange a complimentary stay in your chosen destination. This will provide you with an opportunity to try out the accommodation and the visits you have planned, and to identify their locations; in turn this will help you confidently complete your risk assessments. It will also help you feel more confident about taking a group of young children to a foreign destination, as you'll be more familiar with the surroundings.

6 Risk assessments

This area of trip planning has many a teacher pulling their hair out. It is a detailed and necessary part of the planning process, essential for the safety of travellers, and – once you know you've got it right – a huge reassurance for you. Using an LOTC-accredited provider will save you precious time in filling out paperwork and give you peace of mind that all the elements of your trip have been carefully checked on your behalf.

But your operator can't do everything for you, and

there are very sensible reasons why. Good safety management depends on assessing the risk; somebody needs to consider who will be affected then take the appropriate control measures. Therefore, a good knowledge of who is in your group is essential. Most operators will provide you with risk assessment templates to use.

7 Allow plenty of time

If you want to arrange a trip abroad, don't delay! It's important to plan well in advance to give yourself, your pupils and their parents as much time as possible. This will give you more options to choose from, and mums and dads more time to budget. The more popular accommodation and visits get booked up quickly – get in early to avoid disappointment.

8 Enjoy the experience

Last but not least, when the big day comes, don't forget to embrace everything your overseas adventure has to offer. It's widely recognised that learning outside the classroom can build strong, positive relationships and independence alongside enhancing academic achievement, supporting the wider character development and resilience pupils need to deal with life's inevitable challenges.

Plan a fantastic trip beyond the UK and your children will return with memories that will last a lifetime.

“It is possible to organise your school trip independently; however, you'll then have all the responsibilities of a travel company, both legal and financial”

BEFORE YOU GO

It's easy to overlook important details when you've got a lot on – before you board the bus, don't forget to...

- Make sure you have 24-hours emergency help and support in the unlikely event that anything should happen, such as flight cancellations or last-minute delays.
- Create a contingency fund to cover any unforeseen costs or events (and ensure you can access it quickly!).
- Check that your pupils have pocket money (in local currency) to take with them, to purchase items such as soft drinks, snacks and souvenirs.



Steve Craven is director of NST Travel Group. Find out more at www.nstgroup.co.uk



BRING

LEARNING

TO

LIFE



**Visits
from just £4
per person**

BRAND NEW STEM WORKSHOPS!

Discover the learning possibilities at 2 of Manchester's top attractions.

THE

ULTIMATE

LEGO®

CLASSROOM





LEARNING JOURNEYS

Workshop 1 – Robotics: Design & Control

In this brand new workshop, children (Key Stage 2 and 3) can develop key computing skills, including writing and debugging programs. Using the amazing technology of LEGO WeDo 2 kits connected to tablets, the whole class will build and program robotic creations and bring them to life! After designing their own robotic vehicles, pupils will experiment with making them move, make sounds, display light effects and more using a specially designed coding program.

Workshop 2 – Seesaw

Designed for Key Stage 1, this workshop sees younger children follow instructions to build a seesaw using Duplo Technics elements. They then use their seesaw creations to predict the outcomes of experiments involving weight and balance. The lesson is designed to encourage pupils to explore the scientific principles of balancing forces, energy, levers and pivots through playful learning.

Self-Guided learning

A toolkit booklet is provided with a number of activities included for teachers to do with their class. These suggest ways to produce learning outcomes from the rides and attractions within the Centre. The class can plan a short animation that can then be created on the stop-motion tables, or race cars in the Build & Test area to look at force and speed, plus many more ideas!

WE LOVE TO LEARN

Building key STEM skills

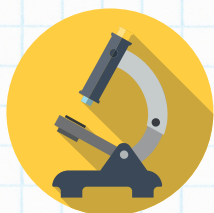
Invite your class to experiment with robotics, coding and more in Manchester...

LEGOLAND® Discovery Centre Manchester is well known as a place for a fun end-of-term trip, but did you know it offers educational workshops too? The Centre's on-site lessons are designed to bring science, engineering and language to life and encourage skills in communication, collaboration, critical-thinking and problem solving. There's a purpose-built classroom where children can make wonderful LEGO® creations that

demonstrate scientific principles such as balance and force, or utilise the popular toy to develop language and communication skills.

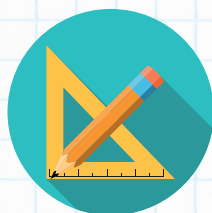
The Centre also offers a number of suggested learning activities that teachers can use with pupils throughout their day, such as making maths exciting by recording everyone's scores on their laser ride and using the results back in the classroom.

CURRICULUM LINKS



SCIENCE

Several of the workshops for Key Stage 1 and 2 use LEGO to demonstrate scientific principles such as forces, balance, energy, fair testing, weight and counterweight.



D&T

This is at the heart of all workshops and free-build play opportunities. All workshops have strong D&T learnings with curriculum links added to each option.



CODING

The Centre uses LEGO technology to allow children to experiment with creating and debugging simple programs, and using sequence, selection and repetition in programs.

manchester.legolanddiscoverycentre.co.uk T: 0371 097 1059



WHY A GREAT TRIP WILL BOOST WELLBEING

Don't underestimate the potential of educational visits to boost communication skills, support self-esteem and promote positive emotional health...

HELEN ROUGHLEY

The world children experience today is very different to the one I knew as a child. We now live in a high-tech age of screens, instant connections, and information and entertainment that's available at the click of a button. I personally don't see this as a bad thing; technology can be wonderful and it is important that future generations embrace it and develop it. It also creates endless learning possibilities – but we also can't ignore how these fast-paced changes can affect young minds, particularly when it comes to delivering children's education.

When I was at school, the idea that play had a vital role in helping to shape who children are and how they communicate was relatively unknown. Social interaction with others was part and parcel of playing games and therefore the development was natural – it just occurred. The significance of play is far better understood these days, of course. And we're aware that traditional games face stiff competition from technology when vying for children's attention. There are people who find the idea of digital play alarming, and in some ways it is! Too much time looking at screens, playing single-player games, interacting with things that provide no emotional feedback can cause issues with social development – or at the very least, there is evidence to suggest that it can affect a child's wellbeing and/or ability to communicate their feelings well.

It is not necessarily a case of 'blame the people around the children for this'; it is just the reality of the modern world. It is the case, however, that while the way social behaviours are learnt have changed significantly, education has struggled to adapt, and the effect this can have on classroom learning can't be ignored.

Supporting wellbeing

I am not a teacher, but those teachers I know who have been in the industry for over 10 years say that classroom life has changed considerably in recent times. There is greater pressure to meet National Curriculum targets and to maintain a strong focus on academic subjects. The burden of exams, and the need to achieve expected results, is never far away either. And of course teachers must contend with the ever-changing ways in which the profession is assessed. Add to this the need to inspire children in new ways, to spark interest in subjects that involve traditional learning and there's a lot to deal with in a day! Children's attention spans are shorter. The parameters of learning are different. There's a greater need to consider emotional wellbeing in the classroom. Yet many teachers will admit they are not trained to deal with that need, and there are just not enough hours in the day.

So what can schools do differently? A recent study by the World Health Organization (covered in detail at bit.do/TEYwho) states children's health, brain development and social skills are being damaged

by lack of exercise. I am sure we would all agree that leaving the classroom once a week to explore the world would improve class culture, confidence and overall wellbeing by promoting greater interactions, but that is neither possible nor practical. There's the research, the organisation, the cost and other practicalities to consider. However, there is a strong argument for learning outside the classroom as much as possible. Many studies show the change in dynamic can boost self-esteem in children and spark conversation – and who can argue with the old saying that the fresh air will do you good? (I think that one goes for the teachers too!). Don't underestimate what just one trip featuring an activity such as kayaking, abseiling or climbing can do for fitness, confidence and wellbeing. It could lead to pupils developing a lifelong interest, but

at the very least it will be a new experience that gets the heart pumping!

Multiple benefits

In my job role I sometimes hear feedback from teachers that some suggested school trips are not seen as educational enough by parents – that the National Curriculum benefits must be front and centre for the outing to be considered worthwhile. Visits planned for the purpose of promoting wellbeing or improving communication may not be seen as a priority, therefore, but I believe that enhancing emotional wellbeing can be regarded as a secondary benefit to any school trip. A curriculum-focused visit to a National Park, for instance, can also provide exercise, introduce new experiences and naturally spark conversation. Conversely, if your focus is on wellbeing or providing

DON'T FORGET!

Planning your next trip? Keep these five points in mind...

- Ask questions – a good school trip venue should have the answers you need, from queries about curriculum links to where a coach can park!
- Look for accreditations – I'd recommend prioritising places with the LOTC Quality Badge.
- Classroom resources – see if your chosen destination offers pre- or post-visit lesson plans; these can be really useful for cementing learnings and adding excitement to lessons.
- Have fun – don't be afraid of choosing the fun option! Workshops provided by educational destinations often integrate STEM learnings with play successfully.
- Give feedback – good venues want your school to return and will take your comments on board and try to improve for the future.

“Enhancing emotional wellbeing can be regarded as a secondary benefit to any school trip”

an end-of-term treat, this doesn't have to be seen as just fun! Popular destinations such as theme parks now understand the importance of offering links to the curriculum, for example, adding suggested scientific learnings to activities such as riding a rollercoaster.

Places to play

I mentioned above that technology has intruded upon ground once occupied by traditional play, but it's important to remember that it hasn't squashed it altogether. A child faced with an empty field

for entertainment will make use of it; one presented with a traditional toy will still see what the possibilities are. One toy that's definitely standing the test of time and inspiring multiple

generations is LEGO. Its creators not only promote it as a toy, but also actively highlight its potential in developing wellbeing and communication. Footballer David Cotterill has been very vocal about how playing with LEGO helped him through depression, and he's not the only one who believes in the power of play. There's a big rise in schools across the country adopting LEGO Therapy or LEGO Clubs to aid wellbeing in students of all ages.

LEGO Therapy has been proven

to be an effective way for children with social difficulties, in particular, to improve and practise their social interaction and communication skills, but it offers benefits for all.

This is all very well for schools that can afford toys for equipment for regular use but many cannot and that's where the benefits of varying school trips comes in – educational destinations such as LEGOLAND Discovery Centre in Manchester offer such opportunities outside of the classroom, and the experience of being away from school may just make the effects even more valuable.



Helen Roughley is marketing executive for Merlin Entertainments in Manchester. Find out more about the educational opportunities on offer at LEGOLAND Discovery Centre at manchester.legoland-discoverycentre.co.uk



Godstone Farm

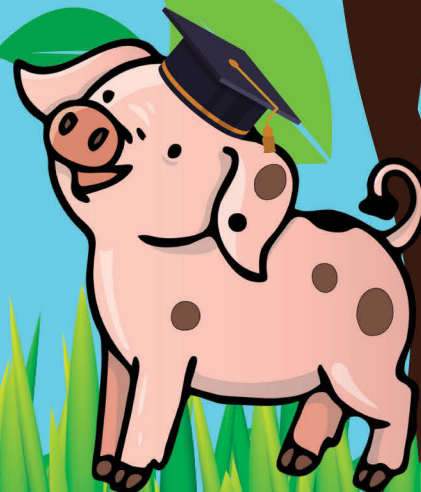
Explore • Discover • Play

With nearly 40 years experience we're
the place for a fun filled trip.

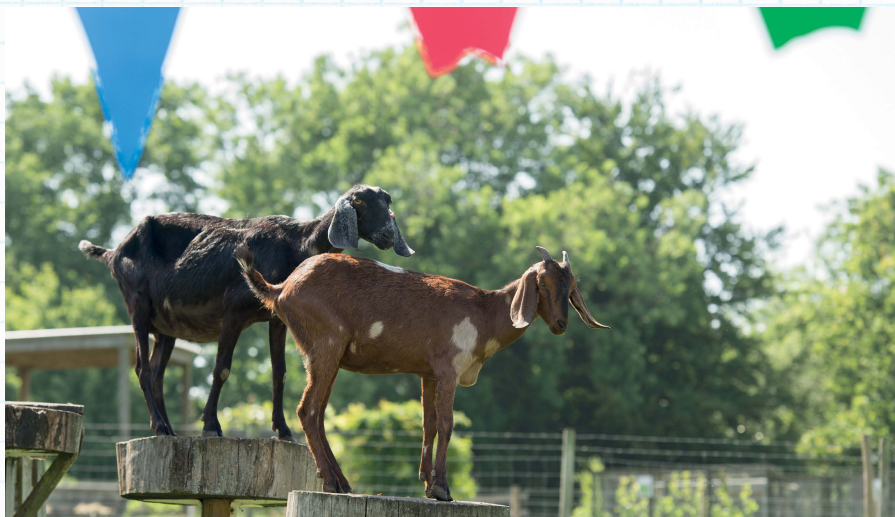


Book now for school visits
Call 01883 742546.

More information at
www.godstonefarm.co.uk



Based in the rolling Surrey Hills, Godstone, RH9 8LX



LEARNING JOURNEYS

1. Structured visits

Godstone's structured school visits include entrance to the farm for the whole day, a morning of activities with a member of the schools team, and an afternoon of free time to explore the farm. One free adult is admitted per five children, and free parking and ample coach parking is available (ask for details of discounted coach hire). There is a picnic barn on site for lunch, too.

2. Available activities

There are a host of activities to choose from at Godstone. New for 2020 is pond dipping, which joins tractor rides, 'meet the animals' sessions, pig feeding, and horse/pony, farm animal and duck feeding talks. From April to July you can focus on food (recommended for Year 2 and above). On top of that you can enjoy the Dinosaur Discovery walk and go in search of mini beasts.

3. SEND programme

Godstone's SEND programme offers the opportunity for a self-guided visit, with one adult admitted free per child. Children can enjoy a free tractor ride and each will receive a free bag of animal feed. In the afternoon, following lunch in the picnic barn, they can enjoy a free private animal holding session. In advance of the visit, you can access downloadable photos of the farm to help familiarise children with what to expect.

WE LOVE TO LEARN

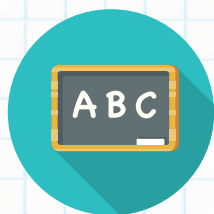
Let's explore, discover & play!

Visit Godstone Farm and discover learning opportunities for all ages

Forty years ago Godstone Farm opened its doors as an educational destination for school children and over the years it has developed into the fantastic attraction visitors enjoy today. With a wealth of experience in engaging young learners, the Godstone team are well equipped to ensure everyone – children, teachers and helpers – will thoroughly enjoy their day.

The farm's schools programme has been specially designed to complement the Early Years Foundation Stage and the Key Stage 1 and 2 programmes of study, combining what you are covering in the classroom with a whole heap of fun. Godstone also welcomes children with special educational needs and disabilities for a semi-structured visit. Book today to discover, explore and have a great time!

CURRICULUM LINKS



EYFS

A visit to Godstone boosts communication and language; physical development; and personal, social and emotional development skills, and develops children's understanding of the world.



GEOGRAPHY

There are many ways to focus on primary geography at Godstone – from developing place knowledge and fieldwork skills, to exploring both human and physical geography.



SCIENCE

Explore the scientific world at Godstone with both KS1 and 2 groups. Investigate plants, animals, living things and their habits, everyday materials, seasonal changes, and rocks.



DISCOVER

teachwire

YOUR LINK TO THE BEST IN EDUCATION

ONLINE!



Teachwire.net offers a daily mix of news, commentary and resources for primary school teachers.
Find advice, opinions, lesson plans and assessment tools – all for free!



Curriculum deep dive

Teacher Jon Hutchinson and colleagues took a research-based look at their curriculum. Here's how they did it, and how you can too...

www.bit.do/twCDD

THE **teachwire** NEWSLETTER

Remember to sign up to our weekly email newsletter for highlights, including free lesson plans, resources and useful links, sent directly to your inbox.



facebook.com/teachwire



twitter.com/teachwire



pinterest.com/teachwire



IDEAS

Nine ideas for World Book Days in EYFS and KS1.

www.bit.do/twWBD20



ADVICE

Get pupils hooked on researching local history.

www.bit.do/twLHi



OPINION

Why are older teachers being forced out?

www.bit.do/twOTe



RESOURCES

Six ways to teach noun phrases in KS1-6.

www.bit.do/twNPH

WHAT'S TRENDING?

1

12 things you'll notice about winter in school.

www.bit.do/twWSc

2

Unleash the power of story and boost recall.

www.bit.do/twStR

3

Use interactive novels to teach logic skills.

www.bit.do/twFFa

4

Here's why I had to quit teaching.

www.bit.do/twWIQ

5

Ofsted's approach is killing us.

www.bit.do/twOfs



The Postal Museum

LONDON'S NEWEST ATTRACTION FOR YOUR SCHOOL



- ▶ Ride Mail Rail, London's hidden postal railway
- ▶ Discover interactive sessions for EYFS, KS1 & KS2
- ▶ Get hands-on in *Sorted!* The Postal Play Space

NEW FOR 2019-2020 POSTAL PACKAGES

Make a day of it. Book a Postal Package and get a discount on your trip. Select your activities and let us plan your first class visit.

To find out more and book:
Visit postalmuseum.org/for-schools
Call 0300 0300 700








The Postal Museum • 15-20 Phoenix Place • London • WC1X 0DA



Stratford-upon-Avon
Butterfly Farm

www.butterflyfarm.co.uk



The UK's Largest Tropical Butterfly Paradise!

Butterflies • Life-cycles • Mini-Beasts

The Ancient Maya & so much more...

- Free guided tour to all pre-booked groups of 10 or more
- Disabled access to all displays
- Downloadable Education Packs
- Risk Assessment
- Free teachers familiarisation visit with booked tour
- Expert education team
- Choice of tours

Fantastic value combination tours available, see website

Swan's Nest Lane, Stratford-upon-Avon,
Warwickshire, CV37 7LS,
Tel: 01789 299288 E: schools@butterflyfarm.co.uk



Open all year from 10AM except Christmas Day

ADVENTURE RESIDENTIAL OR DAY TRIP ON THE STUNNING JURASSIC COAST IN DORSET





- ▶ **Residential choice:** Choose our exclusive *Tented Village* option for an authentic outdoor experience; *24/7 pastoral care*, spacious tents, large communal tipi with fire pit and dedicated teachers area or our *Residential Centre* for dormitory accommodation plus dedicated teacher and classroom facilities.
- ▶ **Programmes tailored to your requirements:** Each programme contains a unique set of adventure activities or excursions; these can include coasteering, waterpark, mud run, kayaking, mackerel fishing, rock-climbing & abseiling and more! Led by fully qualified friendly instructors.
- ▶ **Activity day trips:** Your day can include any activity combination.



cumulus
CHALLENGE AND ACHIEVE

Call 01929 555 111
e: info@cumulusoutdoors.com
w: cumulusoutdoors.com
f: [cumulus outdoors](https://www.facebook.com/cumulusoutdoors)

All staff are DBS Enhanced checked and First Aid qualified.
All activity instructors hold the minimum required NGB (National Governing Body) qualification for their disciplines which they usually exceed due to their experience.

SCHOOL & YOUTH RESIDENTIALS | ADVENTURE EXPERIENCES | DUKE OF EDINBURGH | TEAM BUILDING



Under 4's go FREE

Brazilian value:
Admission still at 2014 prices!!

Explore the Amazona in Cromer




AMAZONA ZOO

South American Animal Adventure

amazonazoo.co.uk




Rainforest Springs
outdoor play

Jungle Tumbles



stay with us at
cromercamping.com
check website for opening times



Hall Road, Cromer NR27 9JG Tel. 01263 510741

Facebook.com/AmazonaZoo @AmazonaZoo amazonazoo.co.uk

Subscription order form

Air Business Subscriptions, Rockwood House,
9-17 Perrymount Road, RH16 3DW

YES! Please start my subscription to Teach Primary

1 DIRECT DEBIT

☐ 4 issues for £15.99

2 CHEQUE/ CREDIT CARD

☐ 8 issues for £39.92 (1 year)

3

☐ 16 issues for £79.84 (2 years)

DELIVERY/INVOICE DETAILS, please complete in BLOCK CAPITALS

Title	Forename	Surname
Nursery Name		
Address		
Postcode		
Daytime No.	Mobile No.	
Email		

1 INSTRUCTION TO YOUR BANK OR BUILDING SOCIETY TO PAY DIRECT DEBIT



Originator's ID No. 677186

Name and full postal address of your Bank or Building Society

To the Manager

Address

.....

Postcode

Instruction to your Bank or Building Society
Please pay Aceville Publications Ltd Direct Debit from the account detailed in this instruction subject to the safeguards assured by the Direct Debit Guarantee. I understand that this instruction may remain with Aceville Publications Ltd and, if so, details may be passed electronically to my Bank/Building Society.

Name(s) of Account Holder(s)

Branch Sort Code

Bank/Building Society Account Number

Signature(s)

Date:

Data Banks and Building Societies may not accept Direct Debit instructions for some types of accounts

2 ALTERNATIVE WAYS TO PAY

CHEQUE/CREDIT CARD ☐ £39.92

☐ I enclose a cheque made payable to Teach Primary

☐ Please charge my ☐ Visa ☐ Mastercard ☐ Amex ☐ Switch/Maestro (issue No.) ☐

CARD NUMBER

EXPIRY DATE

SIGNED:

DATE:

TP141

*This is a UK Direct Debit offer. Gift is only available to UK subscribers. Existing subscribers can renew using this offer. Your subscription will begin with the next available issue. If your subscription is a gift, the gift and gift card will be sent to the donor. You can also subscribe via cheque or credit card. In the event of a gift being faulty or damaged, please contact us within 28 days of receiving the gift. This offer is subject to availability, alternative gift may be supplied to the same or greater value. This is a limited offer and may be withdrawn at any time. Photocopies accepted. Cancellation policy applies, refer online or contact customer services for more details. Please note: Overseas subscriptions will not include subscription gifts or cover-mounted gifts. By subscribing we will contact you about your subscription where appropriate.

Your details will be processed by Aceville Publications Ltd (publishers of Teach Primary Magazine) in full accordance with data protection legislation. Aceville Publications Ltd may wish to contact you with information about other services and publications we provide which may be of interest. Please tick the relevant box below if you ARE HAPPY to receive such information by Post ☐ Phone ☐ Email ☐ Aceville Publications Ltd will NOT share your personal details with anyone else.

Inspire, educate
and entertain –
put on a play with



**Easy Peasy
PLAYS**



Suitable
for ages Early
Years/
Nursery

EARLY YEARS PLAY

OUR VERY OWN POP STARS

Let's get ready to rock!

The day at the nursery group starts just like any other, but no-one can believe their eyes when a group of world-famous pop stars drop by to put on a very special show. However, things don't go quite according to plan, and there's only one solution – the children must leap in to help save the day! With songs to learn, costumes to find, and time running out, there's not a moment to lose...

Full of easy-to-learn songs guaranteed to have every toe tapping, this is the ultimate feel-good show that's perfect for any time of year.

Stand by for a popstastic spectacular like you've never seen!

When you subscribe to Teach Primary Magazine, you benefit from:

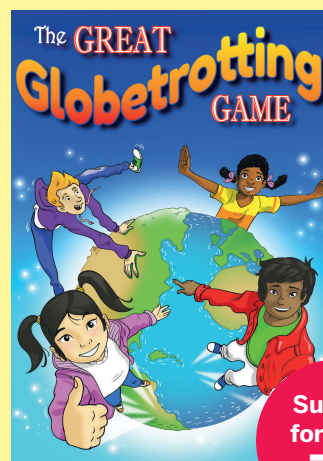
- FREE* welcome gift
- Access to exclusive digital resources and special offers
- Free time-saving lesson plans from creative and outstanding teachers
- Insight & opinions from leading UK columnists
- An entire section dedicated to teaching English
- Special features such as coverage of outstanding schools and behaviour management

SUBSCRIBE TO **teach PRIMARY** AND GET A FREE

ALL-YEAR-ROUND SCHOOL PLAY OF CHOICE WORTH UP TO £50



Suitable for ages
9+



Suitable for ages
7+

PRIMARY PLAYS

HUBBLE BUBBLE PIRATE TROUBLE

Climb aboard for a swashbuckling adventure on the high seas!

Shiver me timbers! There's trouble on the ocean blue when an ancient treasure map falls into the hands of two pirate crews. Both ships race to be the first to find the buried treasure... and that's when the fun really starts! Hold tight for a rollercoaster ride, packed to the rafters with thrills, spills and plenty of rollicking sing-along songs! With its heart-warming message about friendship and working together, this is also the perfect show for school leavers.

Yo, ho, ho, and away we go, on the most spectacular pirate adventure of all!

THE GREAT GLOBETROTTING GAME

Get ready for a magical mystery tour like no other...

Children are never too young to learn about different cultures and ethnicities, and this fun-packed play, with its universal message of inclusivity, is as entertaining as it is educational.

An enchanting musical that takes us on a rollercoaster ride through lots of exciting countries around the world... With its heart-warming finale celebrating global unity, this is also the perfect show for school leavers.

Hold onto your hats for a magical, musical mystery tour that will entertain, educate, and enchant!

3 EASY 3 WAYS to subscribe...

- 1 teachprimary.com/TP141
- 2 **0800 904 7000**
Quote: TP141
- 3 Send us your order form

Freephone lines are open Monday-Friday 8am-6pm, Saturday 9am-5pm | aceville@dctmedia.co.uk

**SAVE
OVER
20%!**

4



ISSUES
FOR ONLY

£15.99

Do residentials still matter?

With budgets and classroom time squeezed, is there still a need for a school residential?



It's that time of year again. Brochures are mounting up, emails are cluttering inboxes and your stress levels are beginning to rise. It's here; time to plan the next school residential visit.

But is it really worth it? The form filling, the permission getting, the organising? What do pupils really gain from an overnight stay with their classmates?

Research conducted recently by YHA seeks to answer those questions. In a pilot scheme with Aspire, an organisation which provides 'outstanding' alternative educational provision and support, secondary age students were taken on a school residential with a view to developing positive behaviours, attitudes and aspirations.

There are nearly 50,000 young people in AP educational institutions in England. According to the Institute for Public Policy Research (IPPR), children in care, SEND children and children in poverty are at higher risk of ending up in AP. Pupils with SEN are almost seven times more likely to be permanently excluded than those without, and evidence suggests that excluded children have a poorer life trajectory in the long term than those who are not.

It is vital that these young people are supported to enable them to reach their full potential.

The impact

The group visited YHA Ironbridge Coalbrookdale for two nights, taking part in a range of activities including high-adrenaline abseiling and zip-wire and skills-developing bush craft and orienteering.

Surveyed at the beginning and end of their stay, the results recorded by the students were impressive. 86% stated that they had learnt something new about the environment, and 72% agreed that they got on better with the group. Significantly, 66% felt more confident in themselves, and 69%





confirmed that they had been more physically active than they would be at home, with some students stating they had been exhausted by the end of the day.

"We are all good friends now"

The impact on friendships within the group was further emphasised by the fact that those who had taken part formed a SnapChat group called 'family'. Despite lasting just two days, the connections they made have endured and some still remain friends and regularly keep in touch. The staff accompanying the young people felt that they would be far more confident to take them away again, being reassured that with the right support and facilities it can be a positive experience for everyone.

"...the trip was actually the best days of my life. A trip to never forget"

The pilot marks the start of a year-long relationship between Aspire and YHA. Together they will be developing the programme to make it as easy as possible for other APs to reap the same benefits for their students.

This residential is the latest to be studied by YHA to determine the true long-term impact of residential on young people. YHA welcomes over 400,000 young people through its doors each year and is determined to provide every one of them with the best experience possible. Previous research by YHA has been positive; 78.5% of young people surveyed reported increased confidence after a stay and 73% confirmed they had made new friends.

YHA is a leading social enterprise with a 90-year history of making travel and adventure available to all. The charity aims to improve outcomes related to health, wellbeing and life skills — particularly for young people and families with challenging lives. YHA is the largest UK provider of LOTC-accredited sites and a champion of the #BrilliantResidential campaign.

We've always known that residential are an invaluable part of a child's education, but now we're beginning to see the hard evidence of just how big the impact on a young person's life can be.

To find out more about what a YHA residential could do for your students, and how YHA can support your school to access enrichment opportunities, visit groups.yha.org.uk/school-trips or call 01629 592501.



had developed a more positive relationship with their teachers.

"It changed people, they became nicer, kinder, saying their please and thank yous" – Student, Aspire group

Mark, the group leader, felt the residential had provided benefits for both the school and the young people. He saw positive behaviour changes, with many of the students becoming more polite and engaging better with their teachers and peers. There had been a positive improvement to the relationship between students and teachers, but interestingly, girls in particular had shown greater increases in self-confidence.

Physical activity also played a key role in the residential. 64% of the students

Stepping back IN TIME

Those in the UK are spoilt for choice when the time comes to plan a history-linked school trip – but here are six of our favourites

History is a key component of the primary curriculum, so exploring the long and varied past of this sceptred isle is something every child must do. We're lucky enough in this country to be surrounded by history, dating back hundreds and thousands of years into prehistory – and that's something that's true whether you live in the city or the countryside. The problem is deciding where to go...

Once you've made your choice, you'll find a school trip is hard to beat when it comes to bringing history to life – there's nothing like knowing you're standing in the very spot a famous

individual once occupied, or seeing a building that's hundreds of years old close-up to inspire learners. Many locations are supported by excellent learning resources and workshops too, including all those outlined below, not to mention museums and visitor centres. The following are the tip of the iceberg – so you best start to planning!

1 The Battle of Hastings

Arguably the most famous date in English history, 1066 is a key part of the curriculum – and your pupils can go and stand in the very place that Harold fell. The site in East Sussex features a visitor centre with interactive



1 The Battle of Hastings



2 Shakespeare's Birthplace

displays, the partially ruined Battle Abbey, and the battlefield itself. The abbey gatehouse houses an exhibition featuring historical artefacts, and its rooftop viewing platform provides a view of the local landscape. Look out, too, for the wood-carved sculpture trail. Visit www.english-heritage.org.uk

2 Shakespeare's Birthplace

A trip to this Elizabethan home affords visitors the chance to walk in the Bard's footsteps and enjoy artefacts related to his life. The Shakespeare Birthplace Trust offers courses for Foundation Stage children upwards at the Shakespeare Centre very close by, including a range of history workshops for KS2 covering a number of different eras – from the Romans to the Tudors – and free resources can be accessed online. Needless to say, this could make a fantastic literacy-linked trip too. Visit www.shakespeare.org.uk

3 Sutton Hoo

The National Trust have spent £4 million transforming this famous Anglo Saxon burial site, and part of the money has gone into an overhaul of its educational offering. Its updated list of activities include an



3 Sutton Hoo

interactive Royal Burial Ground tour, a 'sand tray' archaeology exercise, and a brand new River and Wildlife Wander Route, which invites pupils to explore rivers, habitats and trees. There's much more on offer too, and even a remote learning option with which schools too far away to visit can access the site via a video conference call. Visit www.nationaltrust.org.uk/sutton-hoo

4 Bletchley Park

Mention World War II and many pupils will think of soldiers and fighter planes, but this code-breaking centre near Milton Keynes was just as much a battleground as the skies over South East England and the beaches of Normandy. Educational sessions for visiting schools are available for children in Foundation Stage upwards, and Bletchley Park has won awards for the quality of its maths offering as well as its obvious historical appeal. Visit www.bletchleypark.org.uk

5 Whitby Abbey

Built on the site of an Anglo Saxon monastery, suppressed by Henry VIII in the 16th century, Whitby



5 Whitby Abbey

Abbey offers a window onto many centuries of English history. The site features a visitor centre as well as the abbey ruins themselves, and free self-led visits can be arranged (you can download a teacher's pack online to help you plan). Alternatively, there are expert-led Discovery visits, with a new session

for KS2 available that focuses on the life of medieval Benedictine monks. Visit www.english-heritage.org.uk

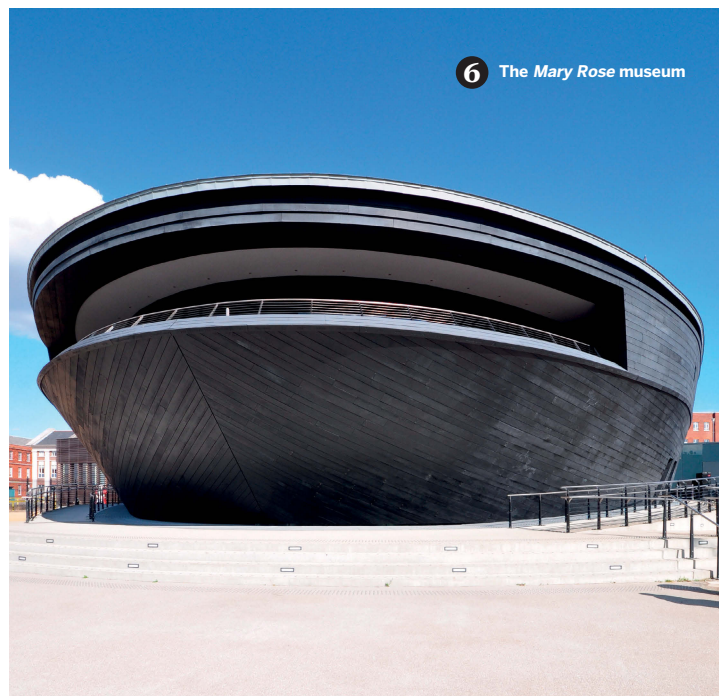
6 The Mary Rose

The story of the sinking of Henry VIII's ill-fated battleship and the modern-day tale of its raising from the

seabed is truly fascinating, and the highly commended museum which today houses the vessel's preserved remains has much to offer school groups. Curriculum-linked workshops for Key Stage 1 and 2 cover everything from life aboard the *Mary Rose* and gun drills to life in a Tudor town. Visit www.maryrose.org



4 Bletchley Park



6 The Mary Rose museum

7 SCHOOL TRIPS

you might not have considered

Reject the traditional and offer your pupils something they weren't expecting...

1

GO SURFING!

For an active learning adventure with a difference, why not take your group surfing? The Wave offers educational workshops and surfing lessons for ages 6+.

www.thewave.com



2

GO HIGHER!

Those with vertigo need not apply – a trip to British Airways' 450-foot tall i360 viewing tower is supported by learning materials for KS1/2 STEM and more.

www.britishairwaysi360.com



3

GO ACROSS!

Fire your pupils' passion for engineering with a close-up look at Brunel's Clifton Suspension Bridge – workshops are available for Year 1 upwards.



4



GO TO THE BATHS!

Give your pupils a unique insight into life in Roman Britain by visiting Bath's, er, baths – activities for KS1 and 2 include mosaic-making and handling Roman objects.

www.romanbaths.co.uk



5

GO TO OLD TRAFFORD!

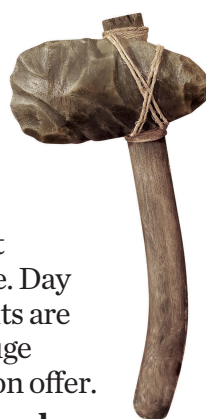
If you can placate those who aren't United fans, a trip to Old Trafford can be tailored to support almost any focus – from the human body to WW2.

6

GO BACK!

Step into the past at Dorset's Ancient Technology Centre. Day and residential visits are available, with a huge range of activities on offer.

www.ancienttechnologycentre.com



7

GO TO TEACH PSHE!

Supporting PSHE, the Sutton Life Centre offers Life Skills Tours for Years 5 and 6 upward – focus on topics such as internet safety, home safety, drugs and more.

www.suttonlifecentre.org





PAULTONS
SCHOOL TRIPS
PARK



... **FOR THE THRILL
OF LEARNING**

@PAULTONSEDUCATE

PAULTONSPARK.CO.UK/EDUCATION



New
KORNADO
SPRINGS

**OPENS 19TH MAY
2020**

education@paultons.co.uk

023 8081 4442

paultonspark.co.uk/education



SHARE THE MAGIC



Disney
FROZEN
THE WEST END MUSICAL

THEATRE ROYAL DRURY LANE ❄️ BEGINS OCTOBER 2020

EDUCATION GROUP RATES FROM £22.50*

Group booking opens 24 February ❄️ Register your interest at FrozenTheMusical.co.uk

*Education group rates valid on selected seats and performances only. Not available during school holiday periods and additional blackout dates. Minimum group size 10+. One free teacher ticket with every 10 paid tickets. All sales final. No refunds or exchanges permitted. Prices, dates, times and cast subject to change without notice. Additional restrictions apply, please enquire for more details.