



# TOP.....! SCHOOL #5 TRIPS

## INSIDE

### BIG REWARDS

Why it's OK to celebrate hard work

### QUICK WINS

Value-packed 24-hour destinations

### BOTTLE THE MAGIC

How to bring the buzz back to class

**SEND  
ALL  
THE PROS OF  
EHCP-LED  
PLANNING**

**FIND  
ADVENTURE  
ON YOUR  
DOORSTEP**

# THE GREAT ESCAPE

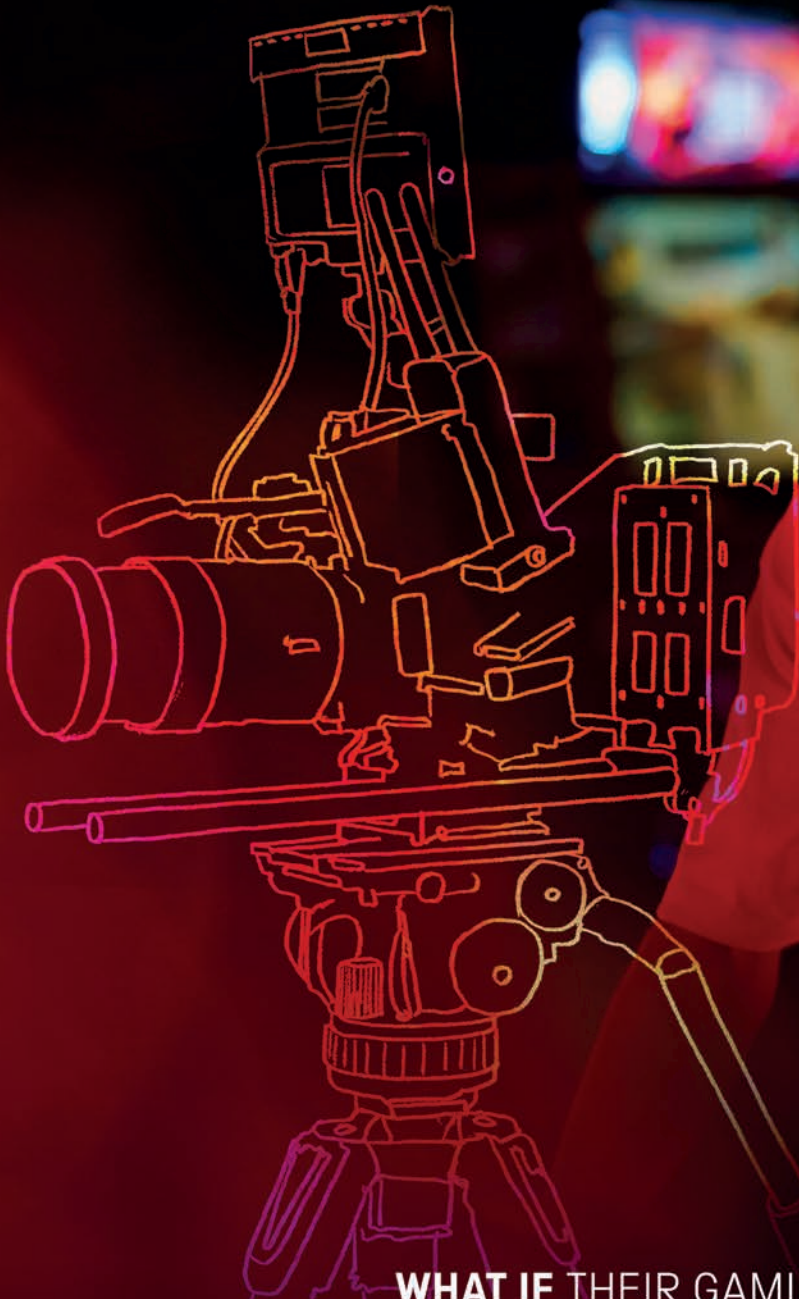
**53 WAYS TO WIDEN STUDENTS' WORLDS**

**teach  
SECONDARY**



# SCIENCE MUSEUM

Book your trip to  
[sciencemuseum.org.uk/learning](http://sciencemuseum.org.uk/learning)



**WHAT IF** THEIR GAMING SKILLS  
HELPED MAKE A BLOCKBUSTER MOVIE?  
EXPERIENCE **A WORLD OF CAREERS**  
AT OUR INTERACTIVE GALLERY

# TECHNICIANS

THE DAVID SAINSBURY GALLERY



# Contents

## Features

### 10 EMBRACING OUTDOOR ADVENTURE

Learning in the natural world today helps children adapt to the challenges of tomorrow.

### 21 BEFORE YOU GO

Don't be caught out by upcoming changes to travel rules and regulations.

### 38 BRINGING IT HOME

Grab available learning resources with both hands, and you'll keep the magic of a school trip alive.

### 48 ALL ABOARD!

Rising EHCPs may be the tip of growing SEND need, so what does inclusive planning for your next trip look like?

### 54 DON'T FORGET YOUR TOOTHBRUSH!

Here are 10 things you should know before going abroad.

### 63 ALL CHILDREN DESERVE BREAKTHROUGH MOMENTS

Schools may struggle to offer memorable outdoor experiences, but it doesn't have to be this way.

### 64 "WHAT ARE YOU WAITING FOR?!"

High-quality learning experiences are within every school's reach.

### 66 FROM 'WELL DONE' TO 'WHEEEEEEE...!'

Rewards systems should be approached carefully, but there's no denying the thrill of a theme park trip.

## Partner content

### 5 PGL

The UNITE! and GROW! R.E.A.C.H. programmes spark learning outcomes outside the classroom.

### 7 DISNEY'S FROZEN THE MUSICAL

Here's why this breath-taking stage spectacular is a school trip that's not to be missed.

### 9 AIRHOP UK

Get your pupils energised with a trip to these trampoline and adventure parks.

### 12 10 OF THE BEST DAY TRIPS

You can cram a lot of learning into just a few hours outside of the classroom. Here are some fantastic options to consider...

### 17 KEW GARDENS

Bring your KS4/5 class to one of the most biodiverse places on Earth.

### 19 SCIENCE MUSEUM

A visit to *Technicians: The David Sainsbury Gallery* supports productive careers conversations.



### 23 HALSBURY TRAVEL

How Halsbury helped Royal Liberty School plan a once-in-a-lifetime school trip.

### 25 EXPERIENCE EDUCATION

Supporting your every school tour need...

### 26 10 OF THE BEST RESIDENTIALS

Schools are spoilt for choice when booking a multi-day adventure for their students, so allow us to make a few recommendations.

### 31 EUROPEAN STUDY TOURS

EST's expertise can fuel an inspirational visit to New York City.

### 33 CONWAY CENTRES

Here's what goes into Conway Centres, Anglesey's award-winning residentials.

### 35 NST

This exclusive accommodation in Northern France is the ideal base for students to experience a different culture.

### 37 KINGSWOOD

Whether it's part of a three-day trip or a week-long adventure, a typical day at Kingswood is anything but ordinary.

### 40 10 TO CONSIDER: INSPIRING IDEAS

Take your students somewhere new this year with these brilliant school trip suggestions.

### 45 WEST MIDLANDS SAFARI PARK

Embrace adventure and plan an educational trip your students will go wild for!



### 46 THE BIG BANG FAIR

Head here for STEM activities, careers panels, and workshops that will leave students on the edge of their seats.

### 47 HISTORIC ROYAL PALACES

Choose from four fascinating sites to help students get hands-on with history.

### 51 IMPERIAL VENUES

Rich culture plus modern learning spaces and accommodation make this the perfect destination for schools.

### 53 PEAK

Let Peak guide your group to next-level learning in the great outdoors.

### 56 ENGLISH HERITAGE

For a memorable history trip for your GCSE class, look no further.

### 57 FORESTRY ENGLAND

Learning outdoors is vital for secondary students – here's how your school can get started.

### 59 PAULTONS PARK

With over 70 rides and attractions, gardens, and exotic animals, there's plenty here to keep any class entertained.

### 61 CADBURY WORLD

Let your students enjoy a day choc-full of history, design and much more.

**teach  
SECONDARY**

#### PUBLISHERS:

Joe Carter  
Sam Reubin  
Richard Stebbing

CONTRIBUTING EDITOR:  
Jacob Stow

#### GROUP ADVERTISING MANAGER:

Samantha Law,  
samantha.law@artichokehq.com  
01206 505499

#### ADVERTISING MANAGER:

Ria Bentham,  
ria.bentham@artichokehq.com  
01206 505928

#### DEPUTY ADVERTISING

MANAGER:  
Hannah Jones,  
hannah.jones@artichokehq.com  
01206 505924

#### SENIOR ACCOUNT

MANAGER:  
Alfie Bennett,  
alfie.bennett@artichokehq.com  
01206 505996

#### ART EDITORS:

Richard Allen & Sarah Barajas

#### ACCOUNTS:

artichokemedialtd@integral2.com

#### CUSTOMER SERVICES:

subscriptions@artichokeHQ.com

#### PUBLISHED BY:

Artichoke Media Ltd.



The views in this magazine are not necessarily those of the publisher. Every effort is made to ensure the veracity and integrity of the companies, persons, products and services mentioned in this publication, and the details given are believed to be accurate at the time of going to press. However, no responsibility or liability whatsoever can be accepted for any consequence or repercussion of responding to information or advice given or inferred. Copyright Artichoke Media Ltd.





# Experience Education

## Student Travel Group

For over 40 years, Experience Education has been the UK's leading experiential travel provider for schools.

Our specialist brands and activity centres are trusted by over **3,000** British schools. We operate trips across five distinct travel categories: curriculum tours; expeditions ski trips; sports tours; and residentials at our UK activity centres.

### *Our Specialist Brands*

**JCA**  
adventure

ACTIVITY  
CENTRES

**ed**edwindoran

SPORTS  
TOURS

**SkiBound**

SKI TRIPS

World  
Challenge

EXPEDITIONS

travelbound

CURRICULUM  
TOURS

Get in touch with our passionate team of experts to plan your school's next adventure.

➤ [experienceeducation.com](https://experienceeducation.com)







## WE'RE THE EXPERTS

# “We empower breakthroughs”

PGL's Jay Richmond explains how the UNITE! and GROW! R.E.A.C.H. programmes spark learning outcomes outside the classroom

### What expertise do you have that visitors can draw on?

Research by PGL has highlighted how important learning outside of the classroom is for schools. In fact, over 80% of teachers rated it as ‘very important’. This inspired us to develop our new R.E.A.C.H. framework in collaboration with teachers: an action-packed, classroom-free range of activity programmes that put a fresh spin on how young people grow and develop. Whether the focus is relationships, experiences, ability, character, or health and wellbeing, our aim is to spark those breakthrough moments that you just can't get from a textbook.

### What breakthroughs will my class make on their UNITE! programme?

UNITE! adventures are designed to improve relationships, build bonds and harness the power of teamwork. Your Y7–9 students will enjoy a winning combo of thrilling adventure activities, team-building tasks and character-building challenges, plus free time for relaxing, socialising and having fun. Whether students are working together to achieve victory in archery tag, encouraging each other to brave the giant swing, or trusting their classmates on the Jacob's ladder, each activity has been chosen for its amazing relationship-building powers!

There is an emphasis on learning outcomes: boosting teamwork by overcoming challenges and celebrating success; enhancing communication skills through listening and sharing opinions; building relationships through shared experiences; growing confidence through mastering new skills; and encouraging empathy and understanding of others.

### What learning outcomes are achieved on a GROW! trip?

On a PGL GROW! adventure, a range of activities, from dawn till dusk, will help your students boost their social and emotional skills. Whether they're



#### EXPERT PROFILE

**Name:** Jay Richmond

**Job title:** Sales executive

**Area of expertise:** Outdoor education

**Best part of my job:** Knowing that I'm helping to spark breakthroughs in students' learning



encouraging one another while 10 metres up on the abseil tower, overcoming fears on the zip wire, or building resilience while stand-up paddleboarding, each activity has been chosen for its character-building qualities.

GROW! adventures focus on sparking breakthroughs: boosting independence through problem solving and managing self-motivation; building resilience so students can keep themselves mentally healthy; growing confidence and taking new-found leadership skills back to the classroom; and encouraging empathy and an understanding that difference is a positive – all essential lessons that your group will be able to take back home with them.

### How do you like to work with visiting groups?

PGL are experts in supporting your students' development. Time out of the classroom to harness the power of outdoor learning goes a long way towards inspiring breakthroughs in young people. It's why we work closely with every school to deliver programmes that meet their needs. With a little support and the freedom to try new things, young people can R.E.A.C.H. new heights, and we hope you'll see the benefits long after they return to the classroom too. Whether you opt for a UNITE! or a GROW! programme, the PGL team are on hand every step of the way to make your life easier and their adventure unforgettable.

## ASK ME ABOUT

**LOCATION** – With 15 centres to choose from, your nearest PGL adventure is never far away! 95% of UK schools are within a two-hour drive of us.

**DURATION** – UNITE! and GROW! programmes are best enjoyed over 3–5 days, with a range of accommodation options and three nutritious meals a day included.

**WHY PGL?** – Coming from industry experts, a PGL age-relevant programme is perfect for your students, and we have options for all budgets.

[schoolsandgroups.pgl.co.uk](https://schoolsandgroups.pgl.co.uk) | T: 0333 321 2114 | E: [schools@pgl.co.uk](mailto:schools@pgl.co.uk)





THE GUARDIAN, DAILY MAIL, THE SUN, THE TELEGRAPH



Disney  
**FROZEN**  
THE WEST END MUSICAL

EARLY BOOKER GROUP RATES  
FOR EDUCATION AVAILABLE  
FROM £19.50\*  
ONE FREE TEACHER TICKET PER  
EVERY 10 PURCHASED TICKETS  
[groupsales@disneytickets.co.uk](mailto:groupsales@disneytickets.co.uk)

To book tickets or for more information on our  
workshops and free enrichment resources,  
visit [frozenthemusical.co.uk/groups](http://frozenthemusical.co.uk/groups) or  
call 02078450949

Theatre Royal Drury Lane, London

Tickets at the education rate are only available for guests who are in full-time education up to (and including) Year 11. One accompanying adult per every 10 full-time pupils can attend within the education rate, using the free teacher ticket issued with every 10 paid tickets. Valid for Wed - Thu matinees & Thu - Fri evenings. Subject to availability. Excludes all school holidays. Minimum group size is 10. Education rate valid for groups up to Year 13.

\*Early booker rates are valid when paid for 12-weeks in advance of the performance date. ©Disney



## 6 THINGS TO DO AT...

# Disney's Frozen the Musical

Here's why this breath-taking stage spectacular is a school trip that's not to be missed

## 1 Witness the epic spectacle

Be prepared to be amazed! *Frozen* delivers a feast for the eyes, with stunning sets, elaborate costumes, and breath-taking special effects. Your pupils will marvel at the epic spectacle unfolding on the stage before them – from cascading snowflakes to dazzling ice magic, the production's visual prowess will transport them from their seats to the enchanting world of Arendelle.

## 2 Enjoy timeless storytelling

At its core, *Frozen*'s story explores profound themes of friendship, self-acceptance, trust and sisterhood. Transcending age, these themes resonate with young audiences on a deeply emotional level, allowing for a transformative and relatable experience that is certain to make an impression. Your group will be talking about the show long after they return from the theatre.

## 3 Embrace pure escapism

The world of *Frozen* provides an escape from the everyday, inviting you and your students to indulge in a journey of wonder and delight away from the classroom. Whether it's witnessing an awe-inspiring stage transformation or

### BOOK TODAY

Disney's *Frozen*, now enchanting audiences in London's West End until 8 September, when it leaves the UK, offers an unforgettable theatrical experience.



joining in with the infectious energy of the audience during a show-stopping number, *Frozen the Musical* will ignite your imagination and fill your heart with joy.



Photo by Johan Persson © Disney

## 4 Access free learning resources

Devised by teachers for teachers, free resources, including classroom-based activities that delve into themes of uniqueness, trust, relationships and wellbeing, are available to help you harness the educational value of your visit and extend pupils' learning when you return to school. These lesson plans are linked to the KS2 English, drama, performing arts, PSHE and art curriculums.

## 5 Book a workshop or Q&A

For a truly immersive experience, consider booking a workshop led by award-winning Disney teaching artists. These workshops are tailored to your group's needs, offering students the

rare opportunity to perform scenes, songs, and dances from the production. Lastly, don't miss the chance to participate in post-show Q&As, held after Wednesday and Thursday matinees, which provide a unique opportunity to explore the magic of *Frozen* in depth.

## 6 Visit a historic London venue

Your pupils will discover the epitome of theatrical grandeur at Theatre Royal Drury Lane. Visiting groups enjoy easy access with 24 coach bays and numerous public transport links within minutes of the historic venue, which is one of London's oldest and most esteemed theatres. The prime location of the theatre means that it is within easy reach of other iconic landmarks and attractions, too.



Photo by Johan Persson © Disney



# AIRHOP

#JumpIntoHappy

## JUMP INTO THE BEST SCHOOL TRIP EVER!



**AIRHOP**

BRISTOL  
CHELMSFORD  
COLCHESTER  
GUILDFORD  
WARWICK

**FREEDOME**  
CHESHIRE OAKS

**rush**  
**birmingham**  
**high wycombe**

*jump in*

ABERDEEN  
CAMBERLEY  
EDINBURGH  
ELSTREE  
ENFIELD  
ESHER  
IPSWICH  
SHREWSBURY  
SLOUGH

Swap times tables for Trampolines,  
the whiteboard for Wipeout  
and algebra for AirBag.

We'll add a dynamic twist to your PE Lessons  
and provide an unmissable day out!

Scan to find your  
nearest location



All of our 17 parks offer bouncing fun  
for everyone –  
plus meet high health & safety standards

- PAS 5000 Compliant
- Qualified First Aiders

Ability to accommodate large groups



WWW.AIRHOP.CO.UK  
0330 223 3333







## 6 THINGS TO DO AT...

# AirHop UK

Get your pupils energised with a trip to these trampoline and adventure parks...

## DID YOU KNOW...

AirHop can host very large groups – up to 250 people, depending on the park.

## 1 Bounce on trampolines

Your group can enjoy ultimate bouncing fun at AirHop parks, which feature wall-to-wall trampolines that span the floor and reach up the walls. Bouncing is a low-impact activity that burns as many calories as 30 minutes of jogging in just 10 minutes while improving balance, coordination skills, and spatial awareness, as well as working your core and improving circulation.

## 2 Hoptastic team challenges

There are plenty of ways for classmates to compete while having fun at the same time! Pupils can shoot some hoops in a gravity-defying game of basketball on the Slam Dunk lanes. Or team up and take on an opposing team in fast and furious games of dodgeball or football in the Airena (airtracked football pitches). Or race up the peaks on a variety of climbing activities at the indoor Clip'n Climb zones found at Esher, Enfield, Chelmsford and Aberdeen. No climbing experience required!

## 3 Elevate your Hopability

Children can challenge their reactions and physical abilities in the notorious Wipeout Zone. Will they stand victorious or be swept away? They can test their balance and strength against a worthy opponent on the Battle Beams. Or check their reaction time on the Reaction wall or High 9 by tagging all the lit-up pods as fast as they can. Time your bounce carefully!



## 4 Hop yourself happy

Trampolining isn't just fun, it's good for you as well. It reduces stress in the body and releases endorphins. These are your body's feel-good chemicals, so you'll happily come back for more bouncing! More time spent bouncing means more time spent active and less time spent staring at screens and social media. Trampolining is great for your mental health.

## 5 Hop and learn

AirHop parks can add a dynamic twist to your next school trip with a selection of different learning opportunities. From physical education activities that help to explain the importance of being fit and active and literacy and media tasks, where students can vlog or blog their trip, all the way to maths, design, and business activities, such as designing and running a trampoline park.



## 6 Ditch the books for a rewarding bounce

Swap times tables for trampolines, the whiteboard for wipeout, and algebra for the airbag, and let your students blow off some steam on a reward-based trip – an end-of-year treat, for instance! AirHop's fun-packed activities come in all shapes and sizes, and its team of friendly and experienced staff are always on hand to engage, enthuse, and supervise groups to ensure that everyone has as much fun as possible and leaves with a huge smile on their face.







# Embracing OUTDOOR ADVENTURE

Learning in the natural world today helps children adapt to the challenges of tomorrow...

In a world that currently resembles a moving target, an enormous amount of unmitigated information is at young people's fingertips. Consequently, the measure of their knowledge is not the amount of this information that can be retained (cognitive skills) but rather their ability to curate (filter and process) material coupled with an understanding of how, when, and why it should or should not be used. For example, secondary school learners should become competent not only in replicating facts but also in self-regulating their behaviours to properly understand knowledge and use it within and beyond their assessment.

Within an emerging creative economy, a core of highly prized skills, collectively known as '21st Century Skills', is recognised by international agencies, academics, and non-governmental and private sector organisations as essential for generating solutions to some of society's most critical problems in a global marketplace. These skills include young people's ability to be self-aware, empathise with others, question how the world works and how it could be, become strong-willed, and overcome and learn from

failure. We know that youngsters who score high on psychosocial skills at an early age, as opposed to pure academic skills training, report better adult outcomes in education, employment, and mental health (1).

## Experiential learning

Nurturing an optimum blend of physical, social, cognitive, and emotional literacy is most important in childhood. This is where brain growth is most prolific, and a toolkit of skill sets can be fostered to help children adapt to the

challenges of today and be oriented to help them face the demands of tomorrow. Learning through a range of means and experiences enables children to see the world at a granular, personalised level and with a global perspective. This experiential approach helps them not only to distil information but also to integrate it with other experiences and use it effectively.

## Connecting with nature

The unpredictable and dynamic nature of outdoor adventure (OA) reflects our world of constant change. This makes it an ideal pedagogical tool for the development of skills needed for children to adapt to present difficulties and build capacity for their future. In essence, adventure represents our willingness to take risks and learn through uncertainty. Adventure education is about placing healthy demands on young

*“Outdoor adventure provides the bedrock for real-life learning that is both memorable and meaningful”*



people to ignite their sense of worth and purpose in life. OA, therefore, provides the bedrock for real-life learning that is both memorable and meaningful.

Research suggests that learning in predictable, uni-sensory settings, like some classrooms, is less impactful than in changeable, natural, multi-sensory environments (2). Here, learners can connect first-hand with their surroundings, awakening their creative thinking, care for others and problem-solving capabilities.

Whether youngsters immerse themselves in nature within their localities, school grounds or a broader outdoor residential experience, natural settings provide a sense of freedom, an awareness crystallised by the pandemic lockdowns. Schoolchildren engaged in nature-based learning have reported better academic achievement (in comparison to their peers or projected attainment) in reading, mathematics, science, and social studies, and are more intrinsically motivated (3). Nature exposure is shown to improve children's concern for the environment, motor skill abilities, school attendance and wider learning. OA learning is particularly relevant for tasks requiring attention, working memory and collaborations with others – all essential capabilities required during exam

preparatory periods (4).

Although we may believe that time spent outdoors away from studying is wasteful, neuroscience tells us that the most impactful forms of learning are those that intersperse organised chunks of learning with interruptions for inspiring experiences with others or quiet time. This process allows new material to be absorbed as new brain cells are created and neural pathways strengthened. Exposure to the outdoors is built upon these principles and will heighten students' chances of academic success.

### Lasting growth

Despite these many benefits, OA and nature-based learning do not offer a magic solution for all young people. For example, substantial numbers of youngsters, particularly those from disadvantaged households, have restricted access to outdoor spaces (5) and gained less from nature connections during the pandemic lockdowns than their more affluent peers (6). Furthermore, to understand the power of OA and reduce barriers to participation, more robust research is required to understand the underpinning mechanisms within OA that can be



optimised to generate beneficial outcomes for a plurality of learners.

Nevertheless, there is a wealth of evidence to suggest that, if appropriately delivered, OA generates meaningful educational outcomes within and beyond natural settings. At a point in history where young people have faced unprecedented upheaval and threats to their well-being, it has never been more important to create opportunities for them to build an array of '21st Century Skills' to deal with uncertainties in a fast-moving world, both presently and down the line.

Underpinned by an experiential learning framework, OA provides a platform for impactful, authentic experiences that embolden personal growth and should be considered a fundamental part of the fabric of secondary education.



*Dr John Allan is head of learning and impact at Kingswood*

 @Kingswood\_  
 kingswood.co.uk

## IN SUMMARY

- We live in a world that resembles a moving target; it is estimated that 65% of children today will end up in jobs yet to be invented (7).
- Secondary school students should become competent not only in replicating facts but also in self-regulating their behaviours to properly understand knowledge and use it within and beyond their assessment.
- A range of '21st Century Skills', or 21C skills, are required for young people to adapt to continual change. Nurturing an optimum blend of physical, social, cognitive, and emotional literacy is most important in childhood.
- A toolkit of skill sets can be fostered to help children adapt to the challenges of today and oriented to help them face the demands of tomorrow.
- The dynamic nature of outdoor adventure reflects our constantly changing world; this makes it ideal for developing the skills children need to adapt to present difficulties and build capacity for the future.

## References

1. [bit.ly/3sxdqLn](https://bit.ly/3sxdqLn)
2. [bit.ly/49Cltp8](https://bit.ly/49Cltp8)
3. [bit.ly/47Jpc4h](https://bit.ly/47Jpc4h)
4. [bit.ly/46IKrHZ](https://bit.ly/46IKrHZ)
5. [bit.ly/47Bzfls](https://bit.ly/47Bzfls)
6. [bit.ly/3unkFWC](https://bit.ly/3unkFWC)
7. [bit.ly/3G86yHo](https://bit.ly/3G86yHo)





# 10 OF THE BEST DAY TRIPS

If you choose the right place to visit, you can cram a lot of learning into just a few hours outside of the classroom. Here are some fantastic options to consider



## Kew Gardens

Discover the world of science behind the botanical collections at a UNESCO World Heritage Site. Kew Gardens is the perfect outdoor classroom for school groups to participate in education sessions that encourage hands-on learning and develop pupils' curiosity about plant science. The extensive range of sessions on offer help pupils and teachers alike understand the relevance of plants and fungi for the wellbeing of people and the future of all life on Earth.

Find out more and book your visit at [kew.org/kew-gardens/school-visits](https://www.kew.org/kew-gardens/school-visits)





### Technicians: The David Sainsbury Gallery

Visit the Science Museum in London and step into the fascinating world of STEM careers at *Technicians: The David Sainsbury Gallery*. Recreating the workplaces of technicians across multiple sectors – health science, creative arts, manufacturing, and renewable energy – the gallery will get your group hands-on with exhibits that simulate job-related tasks. They'll experience what it's like to be a lighting technician on the Marvel Studios *Black Panther* filmset, how to solve problems faced by wind turbine technicians, and how to make lifesaving medicine as an NHS pharmacy technician. You can also book a free Meet an Employee workshop, where students will take part in activities and a Q&A session with real-life technicians.

Book free at [www.sciencemuseum.org.uk/groups](http://www.sciencemuseum.org.uk/groups)

### Disney's Frozen

The musical that's sure to give you chills is now playing at Theatre Royal Drury Lane. With incredible special effects, jaw-dropping scenery and an unforgettable score from Kristen Anderson-Lopez and Robert Lopez, *Frozen* is an exhilarating experience that will stay with you long after the curtain falls. Inspired by Hans Christian Andersen's *The Snow Queen*, *Frozen* draws inspiration from Nordic cultures and mythology. To enhance your visit to the show, there is a wealth of resources available, including free lesson plans and resources for KS3 pupils.

This heart-melting theatrical production is brought to spectacular life on stage by a multi-award-winning creative team.

For more information, visit [www.disneyonstage.co.uk](http://www.disneyonstage.co.uk)



### FANTASTIC VALUE

WMSP offers amazing discounts of up to 50% for educational groups bringing 10 or more paying guests. No prepayments, deposits, or booking forms are required!



### West Midlands Safari Park

At West Midlands Safari Park, you can plan a stress-free visit and explore at your own pace, or enjoy a tailor-made curriculum-inspired day your students will go wild for! WMSP is an award-winning visitor attraction located in Bewdley, Worcestershire, and is home to over 100 different species, including elephants and giraffes. Your group can experience up-close animal encounters across the four-mile Safari Drive, walking trails, and the Adventure Theme Park during the summer season. Curriculum-linked educational sessions include guided safari ranger experiences, enlightening discovery sessions and immersive walking safaris.

To book, visit [www.wmsp.co.uk/school](http://www.wmsp.co.uk/school), email [education@wmsp.co.uk](mailto:education@wmsp.co.uk) or call 01299 40488 (Opt 1).



### AirHop

With 17 locations around the UK, AirHop Trampoline and Adventure Parks are the perfect place for your next school trip. Three group packages are available, starting at £10pp, or a bespoke session can be created around your requirements. All include a selection of fun-packed activities, from free-range jumping and games through to guided learning designed to improve coordination and balance. AirHop's team of friendly and experienced staff, always including at least one qualified first-aider, are on hand to engage, enthuse and supervise, ensuring everyone has as much fun as possible.

**Get in touch to find out more – visit**  
[www.airhop.co.uk](http://www.airhop.co.uk)



### Historic Royal Palaces

Do you want to bring history to life for your students? Historic Royal Palaces offers unique, engaging educational experiences in some of the country's most iconic palaces. Using the palaces and their stories as inspiration, its schools programmes are designed to excite students and make history more real and immersive in the places where so many significant events actually happened. As well as providing subsidised entry for schools, HRP offers on-site programmes that include an extensive range of curriculum-aligned learning sessions for KS3 pupils, while sessions for KS4 and KS5 students are designed to complement exam board specifications.

**To find out more, visit** [www.hrp.org.uk](http://www.hrp.org.uk)

### Jane Austen's House

Transport students of all ages to Jane Austen's world with a visit to Jane Austen's House, the inspiring Hampshire cottage where Jane Austen lived and wrote her ground-breaking novels. You

can choose from a range of options, from specially developed House Tours that bring Jane Austen's novels to life and make them feel relevant and accessible to fun, interactive workshops exploring historical context.

Traditional garden games, Regency letter writing, and Regency dress-up activities are all included in your visit. There's free coach parking on-site, and discounts are available for state schools. If you can't make it in person, both virtual and in-school sessions are also available.

**For more information, visit**  
[www.janeaustens.house](http://www.janeaustens.house)





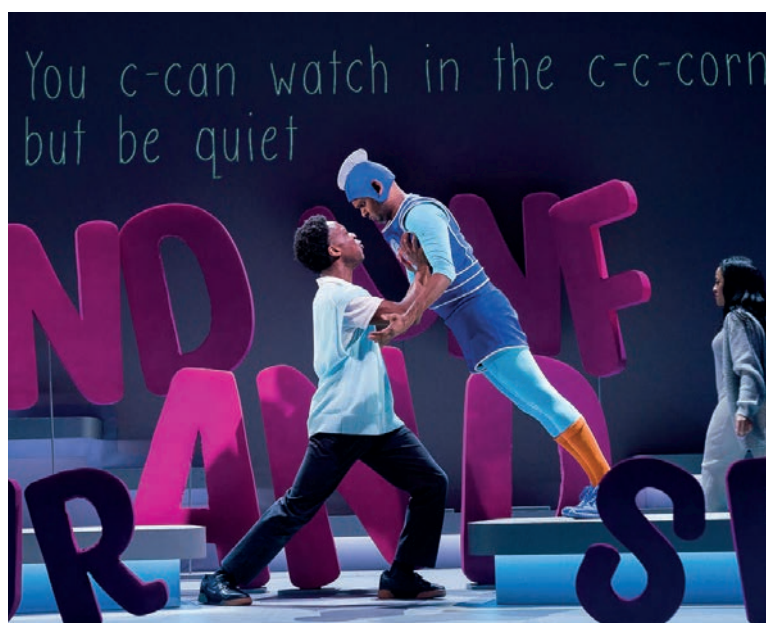
### The Woman In Black

The legendary production of Susan Hill's chilling ghost story *The Woman In Black* is on tour direct from London's West End after an incredible 33-year run at the Fortune Theatre. The production, suitable for ages 12+, brilliantly delivers atmosphere, illusion and horror! Your group can experience the thrill and excitement of this critically acclaimed international theatre event, which has been seen by over seven million people worldwide and continues to delight and terrify audiences of all generations. The *Daily Telegraph* described it as "the most brilliantly effective spine-chiller you will ever encounter".

To book your tickets, visit [www.thewomaninblack.com/schools](http://www.thewomaninblack.com/schools)



Photography © Mark Douet



### Wonder Boy

Olivier Award-winner Sally Cookson (*A Monster Calls*) directs the critically acclaimed Bristol Old Vic production of *Wonder Boy* by Ross Willis, a heartwarming and inspiring story about the power of communication. Sonny is 12. Living with a stammer, he's finding his way in a world ruled by vicious vowels, confusing consonants, and – let's not forget the biggest beast of them all – small talk. Packed with playful humour, dazzling visuals and thrilling original music, this innovative production includes live creative captioning on stage throughout. It's suitable for ages 12+ and features strong language.

To find out more, visit [www.wonderboyplay.com](http://www.wonderboyplay.com)

### An Inspector Calls

Stephen Daldry's multi-award-winning National Theatre production of JB Priestley's classic thriller *An Inspector Calls* returns after a record-breaking, sell-out tour in 2022. Winner of 19 major awards and hailed as the theatrical event of its generation, it has thrilled more than five million theatregoers worldwide. When Inspector Goole arrives unexpectedly at the prosperous Birling family home, their peaceful dinner party is shattered by his investigations into the death of a young woman. His revelations shake the very foundations of their lives and challenge us all to examine our consciences. Suitable for ages 12+ and more relevant now than ever, this is a must-see for a whole new generation.

Visit [www.aninspectorcalls.com/education](http://www.aninspectorcalls.com/education)

#### FREE RESOURCES

You can download a free teachers resource pack to supplement your theatre visit, suitable for use with English, drama, and theatre studies classes.





# Royal Botanic Gardens Kew

## Kew for schools

Inspire pupils to discover  
the power of plants and fungi  
in sustaining life on Earth.

- Curriculum-linked, inquiry-based education sessions
- Interactive teaching resources
- Teacher training and CPD

Find out more at [kew.org/kew-gardens/school-visits](https://www.kew.org/kew-gardens/school-visits)







## WE LOVE TO LEARN

# Immerse pupils in the natural world

Bring your KS4/5 class to Kew Gardens, one of the most biodiverse places on Earth

Travel to the depths of the rainforest inside the Palm House. Stand on the Treetop Walkway and observe the complex ecosystem of the trees' uppermost branches. Explore the secrets held in each plant's unique DNA in the Agius Evolution Garden. Kew Gardens welcomes over 90,000 pupils each year, connecting school groups with the wonder and diversity of plant life, key to the world's future.

Led by experienced Kew teachers, inquiry-based education sessions get pupils involved in hands-on investigation in the Gardens' iconic glasshouses and varied landscape. They will be inspired by Kew's scientific research, exploring nature-based solutions to some of humanity's greatest challenges. KS4 and 5 sessions complement the GCSE and A/AS level biology and geography curricula across all exam boards, as well as BTEC and IB.

**Book your visit and empower your pupils to better understand, value and protect the natural world.**

## JOIN THE KEW COMMUNITY



### TEACHING RESOURCES

Sign up for free to Endeavour, Kew's interactive library of teaching resources all about plant science and the environment – head to [endeavour.kew.org](http://endeavour.kew.org).



### CPD

Discover how you can use plants in school to bring your curriculum to life and engage pupils in learning new scientific knowledge and skills with Teacher Training Days at Kew.



### NEWSLETTER

Get a useful round-up of Kew's free resources, news about the latest offers for schools and teacher CPD delivered straight to your inbox.

## LEARNING JOURNEYS

### Evolution and adaptation (KS4/5)

Walk in the footsteps of Darwin and Wallace to unravel the mysteries of plant adaptation. Delve into the theory of natural selection and investigate the factors driving speciation. Witness the incredible evolution of plants from simple organisms to the diverse and beautiful species surrounding us. Pupils will explore the vast array of plant life, gathering evidence of evolution and uncovering the remarkable survival mechanisms plants have developed over time.

### Photosynthesis and gas exchange (KS4/5)

Discover the complex ways plants have adapted to cope with limiting factors such as temperature, humidity or light intensity and the effects of these factors on photosynthesis and gas exchange. Pupils will investigate how environmental conditions can affect gas exchange and photosynthesis in plants and explore how a changing climate could impact on these processes.

### Conservation and biodiversity (KS5)

Investigate how human activity impacts biodiversity, the variety of all life on Earth. Learn about Kew's global and national conservation work and weigh the need for conservation against the human demand for natural resources. Tackle questions like 'What constitutes a successful species reintroduction programme?' and 'Can we use natural resources sustainably?' Pupils will become Kew scientists and use research and inquiry skills to present scientific arguments and make decisions based on their findings.





# travelbound

## Worldwide Curriculum Led Tours

Stimulate the mind and the senses with an educational tour that gives students a chance to learn more about their subject, the world and their own potential.

Choose the educational tour specialist where no matter the location in the world, your school can enjoy a seamless experience!

### ***Travelbound***

***The trusted name for  
unforgettable school trips***

▶ [travelbound.co.uk](http://travelbound.co.uk) ☎ 01273 244 572

✉ [info@travelbound.co.uk](mailto:info@travelbound.co.uk)



**Experience  
Education**  
Student Travel Group

Travelbound is part of the Experience Education family, enriching lives through experiential travel.

[experienceeducation.com](http://experienceeducation.com)







## WE LOVE TO LEARN

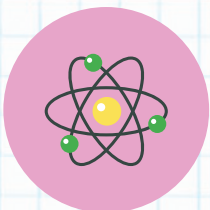
# Explore a world of STEM careers

A visit to *Technicians: The David Sainsbury Gallery* at the Science Museum in London supports productive careers conversations with young people.

Recreating the workplaces of technicians across the health science, creative arts, manufacturing and renewable energy sectors, the *Technicians* gallery at the Science Museum enables pupils to get hands-on with interactive exhibits that simulate job-related tasks. They'll experience what it's like to be a lighting technician on the Marvel Studios *Black Panther* filmset, how to solve problems faced by wind turbine technicians, and how to make lifesaving medicine as an NHS pharmacy technician.

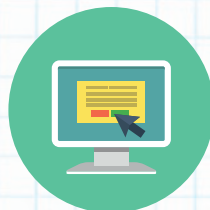
The gallery is aligned with science, design, technology, art and computer science curriculums and supports productive career conversations spanning a range of sectors. School groups can book onto the free Meet an Employee workshop, where pupils will meet a technician and learn about their job through a hands-on activity or Q&A session. This workshop would support you in meeting Gatsby's Good Career Guidance benchmarks by providing opportunities to experience workplace environments.

## CURRICULUM LINKS



### STEM

This STEM careers gallery showcases a range of scientific career pathways. Visiting students are encouraged to think scientifically and methodically through interactive exhibits.



### CAREERS

In the Meet an Employee workshop, students will meet technicians from the Science Museum's partner organisations and have the chance to ask questions about their roles.



### ART AND DESIGN

The gallery showcases a number of art and design career pathways and encourages pupils to explore ideas, analyse their methods and evaluate outcomes.

## LEARNING JOURNEYS

### Technicians gallery

In this free careers gallery, your class will explore the life and work of technicians and get hands-on with interactive exhibits that simulate technical, job-related tasks. They'll experience what it's like to create visual effects on a blockbuster filmset, analyse blood samples in a medical laboratory, operate a robot in a manufacturer's workshop and much more.

### Meet an Employee workshop

School groups can book onto the free workshop for KS3 and KS4, held in the *Technicians* gallery. Pupils will have the chance to meet technicians and find out what it's like to do their job through hands-on activities and Q&A sessions. Meeting the technicians will help your pupils see that they can use their existing skills to be problem solvers and to make a difference in their career.

### Careers trail around the museum

The Science Museum has created a fun, careers-themed activity trail to help lead your pupils around the museum. They will explore *Medicine: The Wellcome Galleries*; *Mathematics: The Winton Gallery*; and *Making the Modern World*, finding out how real-life technicians helped design and build these objects. The trail shows how technicians have helped to build the world around us.

Experience the *Technicians* gallery this term and reserve your place on the Meet an Employee workshop for a unique careers experience for your group. Visit [sciencemuseum.org.uk/groups/technicians-david-sainsbury-gallery-school-info](https://sciencemuseum.org.uk/groups/technicians-david-sainsbury-gallery-school-info)





# Find the perfect SCHOOL TRIP in an instant!

There's something for every

AREA

AGE

SUBJECT

BUDGET

SEARCH BY  
Curriculum Link  
Postcode  
Age  
Budget

We have curated the best educational trips from around the UK and beyond for your students to enjoy.

From free days out to curriculum-rich excursions and residential adventures, there's something for every class and every budget.

## FREE support to help you plan the perfect trip

Download guidance and templates for completing your risk assessment

Download  
NOW



Download your school trip proposal and planning guidance

Download  
NOW



Find the perfect school trip for your students this year.  
Visit: [www.teachwire.net/school-trips](https://www.teachwire.net/school-trips)





# BEFORE you go...

Planning a school trip abroad? Don't be caught out by upcoming changes to travel rules and regulations. . .

IAN COLES

**I**f you will be taking a school group overseas during the next academic year, then you might have heard that a few things will be changing at airports and borders. Here's what we know so far...

## Are hand luggage security rules at airports changing?

The Department for Transport had set June 2024 as the deadline for major UK airports to invest in and install new 3D scanners that will spell the end of strict restrictions on liquids being carried in passengers' hand luggage. That means that you won't need to remove any liquids, gels or creams from your luggage; you won't be restricted to 100ml bottles (the new cap will be two litres); and you won't need to pop everything in a plastic bag. You also won't need to remove laptops and other electrical equipment from your luggage, as the new scanners will give security personnel much greater visibility of what we're all carrying.

So, the great news is that it'll soon be much quicker to get through airport security. (If you travel through Teesside or London City airports, you'll see they've already got the new scanners in place and operational.) However, several major airports, including Heathrow, Gatwick, Stansted and Manchester, are currently behind schedule and could

take until the first quarter of 2025 to get their new scanners up and running.

The advice (for now) is to check with your airport and airline what rules apply to you and, if in doubt, continue to adhere to the restrictions on liquids, in the knowledge that easier and quicker security screening is on its way (hooray!).

## What is the Entry/Exit System (EES), and when is it being introduced?

The Entry/Exit System (EES) is due to be introduced at EU borders on 6 October. This is, to all intents and purposes, a digital border. It should mean that there will no longer be any need to stamp passports for non-EU nationals (like us Brits) visiting the Schengen Area on a short-term basis (like school trips, for example).

In the long term, this is great news for schools, as it should be much quicker to get through security. However, in order to register yourself on the system, you'll have to have fingerprints and a facial scan taken on your first visit to the Schengen Area after the EES is introduced. And to begin with, this will likely cause delays at entry points.

Both we and the School Travel Forum are keeping in regular contact with the relevant bodies and authorities, so that we can make sure we're able to provide our groups with the most up-to-date information.

## What is ETIAS, and when is it being introduced?

ETIAS stands for the European Travel Information and Authorisation System and is similar to the ESTA visa waiver system used by the

United States. It will be an entry requirement for All visa-exempt nationals travelling to Europe – and that includes us Brits.

The good news is that it should be really easy to apply for the ETIAS, as you'll be able to do it online. It'll only cost €7, so it's not expensive, and once you have it, it's valid for three years (or until your passport expires, whichever comes first). This will be introduced a few months after the EES, as it requires the EES to be in place in order to work. So, it's currently not expected to be operational until mid-2025.

This might sound daunting, but with a little planning, you can still look forward to a smooth and stress-free trip. And if you're travelling with a tour operator, such as Halsbury Travel, they'll be keeping a close eye on these developments and will be able to advise you if these new requirements are likely to affect your trip.



*Ian Coles is head of operations and customer experience*

*at school tour operator Halsbury Travel.*

✕ @HalsburyTravel

🌐 halsbury.com





Halsbury  
travel



# BRING LEARNING TO LIFE AND CREATE LIFELONG MEMORIES!



Build relationships  
with your students



Help them to develop  
important  
life skills



Introduce them  
to new cultures  
& experiences



Support every  
step of the way



Free inspection  
visits for group  
leaders!

Start planning your unforgettable school trip today!

[halsbury.com](https://halsbury.com)

0115 9404 303





## OUR BIG DAY OUT

# *“It was a truly unique experience”*

How Halsbury Travel helped Royal Liberty School plan a once-in-a-lifetime school trip to Iceland



### An Icelandic adventure

We enjoyed a whale-watching tour and were lucky enough to see a large pod of dolphins, as well as porpoises and a minke whale. We visited Thingvellir National Park and learned how tectonic plate movement has helped to shape the landscape. And we visited the Great Geysir, where we saw a number of impressive eruptions!

We also took the Golden Circle tour, viewing and going behind the waterfalls at Seljalandsfoss and Skogarfoss.

### Science and geography

Throughout this trip, we aimed to combine both science and geography. We wanted to look at the ecology of Iceland through activities such as whale watching, alongside learning about geological processes. Iceland is unlike any other country in terms of both its landscape and what it has to offer students. Before visiting, it was a destination that none of the students had previously been to, making it a truly unique experience for them.

### Unforgettable moments

A highlight of the trip for many of the boys was hiking on the Solheimajokull Glacier, which saw us embark on a slippery but enjoyable walk to the very top, even managing to drink pure glacier water there! Experiences like this could be once-in-a-lifetime activities, whether that's because students may not have another opportunity to visit Iceland, or because the glaciers may melt before they have a chance to return.

### Planning made easy

Halsbury are fantastic to work with. I know that if I provide a list of ideas about a trip, they will tailor it to be the best possible experience for us. As the staff had been to Iceland recently, they were able to offer ideas that we wouldn't have thought of to make the trip even more enjoyable for the students. We've worked alongside Halsbury for several years, and the service we receive is always brilliant.

## { A TRIP OF FIRSTS }

On top of the more conventional learning outcomes, we wanted to provide new and unique experiences for the students, which we were able to do. Before visiting Iceland, this was a destination that none of them had previously been to.

This was a trip of firsts for many of them, from their first time seeing geysers to their first time whale watching. It really was a trip filled with many new experiences, which meant it was filled with even more awe and wonder.

I would definitely recommend working with Halsbury. We've always had such positive experiences. They are so flexible, which means we can make each day full to the brim with activities that ensure students have the best possible experience.





Secure your next school residential trip with

# JCA

Did you know?  
We also run  
netball and football  
tournament weekends  
for schools and clubs!

Specialists in outdoor activity adventures, we provide schools with exhilarating residential trips tailored to encourage development, nurture skills and gain confidence.

## COME VISIT US!

Our flagship activity centre at **Condover Hall, Shropshire** welcomes schools, groups, and families to experience outbound activities on an adventure to remember.

### Croft Farm Waterpark, Cotswolds

Specialising in providing quality learning experiences on the water, our Croft Farm Waterpark features its own 12 acre chest-deep lake and Royal Yachting Association approved school.

📞 01273 647230 ➡ [jca-adventure.co.uk](http://jca-adventure.co.uk)

✉ [enquiries@jca-adventure.co.uk](mailto:enquiries@jca-adventure.co.uk)



**Experience  
Education**  
Student Travel Group

JCA and SkiBound are part of the Experience Education family, enriching lives through experiential travel.

**JCA** travelbound **SkiBound** edwindoran masterclass World Challenge



# SkiBound

## SNOWSPORTS FOR SCHOOLS

Boasting over 80 resorts and 177 accommodation options stretching across Europe and North America plus 3 exclusive French Clubhotels, SkiBound are the number one choice in snowsports for UK schools.

### EXCLUSIVE SKIBOUND CLUBHOTELS IN FRANCE

- + Doorstep skiing
- + In-house ski technicians
- + Run by English-speaking SkiBound staff
- + Full board accommodation with en-suite facilities
- + Premier French resorts with high-altitude skiing

### COVERING EUROPE AND NORTH AMERICA

Over 80 resorts and 177 accommodation options dedicated to school ski groups



📞 01273 244 570 ➡ [skibound.co.uk](http://skibound.co.uk) ✉ [info@skibound.co.uk](mailto:info@skibound.co.uk)



5 REASONS TO TRY...

# Experience Education Student Travel Group

Supporting your every school tour need

## 1 Travelbound School Trips

Everyone remembers their first school trip experience. Exploring the landing beaches of Normandy, the artistic avenues of Barcelona, or even discovering the key cities of New York, Philadelphia and Washington D.C.

Curriculum tours by Travelbound let you tailor school trips around your learning objectives, curriculum themes and student requirements. Share these goals with your dedicated Travelbound Account Manager and they'll produce an itinerary, which will allow you to focus more on learning and less on logistics. See [travelbound.co.uk](http://travelbound.co.uk) for more.

## 2 World Challenge

Seeking to travel off the beaten track? World Challenge can help with unmatched expeditions. Over 30 years of student travel has seen World Challenge fine tune its Leadership Expeditions to help develop tomorrow's leaders through student-led expeditions.

'Learning Service Journeys' shape global citizens through cultural immersion and take students out of their bubbles. 'Project Independence' trips are for those brave enough to take the road less travelled. Attended by students from all over the country, these trips represent the adventure of a lifetime. Find further details at [weareworldchallenge.com](http://weareworldchallenge.com).

## 3 SkiBound Snowsports for Schools

The popularity of school ski trips has long extended far beyond school PE departments. SkiBound can provide access to a range of premier ski resorts across Europe and North America, without the premium prices.

As well as working with audited accommodation, SkiBound operates its own chain of Clubhotels in the French

### 30 SECOND BRIEFING

The Experience Education Student Travel Group specialises in exceptional travel experiences, having sent over 3,000 groups on trips over the last four decades. Its specialist brands operate across five categories – curriculum tours, expeditions, ski trips, sports tours and UK activity centres.



Alps. Run by SkiBound staff, Clubhotels can provide everything you'll need – from the support of English-speaking SkiBound representatives, to in-house ski technicians, on-site restaurant facilities, evening entertainment options and doorstep skiing options. See [skibound.co.uk](http://skibound.co.uk) for more information.

## 4 Edwin Doran Sports Tours

Elevate your game with the unrivalled worldwide experiences provided by Edwin Doran Sports Tours (EDST). Whether you want to take your football team to Ireland, your netball and hockey teams to Singapore or your rugby team to South Africa, the EDST team can plan an experience that's tailor-made for you. Play against local schools, visit key cultural landmarks, and take part in local initiatives to support communities. Make your sports tour a little less ordinary. See [edwindoran.com](http://edwindoran.com) for more.

## 5 JCA Adventure

For some students, activity residentials will be their first experience of staying overnight away from home. Students are placed at the centre of every JCA Adventure experience, by having instructors remain with groups for the duration of their stays to build familiarity with students' needs, and by having all activities and facilities

situated on one site.

JCA's Condoover Hall Activity Centre in Shropshire, and Croft Farm Waterpark in the Cotswolds are both secure sites that can provide groups with peace of mind, and time to focus on maximising learning outside the classroom. Find out more at [jca-adventure.co.uk](http://jca-adventure.co.uk).

### KEY POINTS

- Travelbound owns and operates the Château du Molay in the heart of Normandy, providing student-centred accommodation, an on-site restaurant and easy access to the region's attractions.
- School ski trips offer students more than just time on the slopes – there are also numerous opportunities to develop socially via peer interactions in new environments away from home.
- EDST is the only sports tour operator to have permanent presences in both the UK and South Africa, making for a truly worldwide team.
- Interested in taking part in international sports events? Check out EDST's sister company, MasterClass Sports Tours, for further sporting tour opportunities across Europe.



# 10 OF THE BEST RESIDENTIALS

Whether staying in the UK or heading overseas, schools are spoilt for choice when booking a multi-day adventure for their students, so allow us to make a few recommendations...



## NST

For over 55 years, NST have specialised in crafting inspirational school trips with immeasurable benefits. Their expert team will create a tailor-made experience to perfectly complement your learning objectives and budget. Experience the vibrant allure of art and design in Paris, retrace the footsteps of history in Berlin, or immerse your group in the theatrical wonders of New York City. NST's captivating educational visits will ensure lasting memories, provide golden opportunities to deepen their understanding of the subject, and foster confidence and independence along the way.

To find out more, visit [www.nstgroup.co.uk](http://www.nstgroup.co.uk)





### Conway Centres, Anglesey

Located in Anglesey, Conway Centres' largest venue is the perfect place for secondary schools to come together and make lifelong memories. From navigating the Menai Strait in a kayak to developing mapwork skills with orienteering or abseiling down a rockface, the activities and programmes at the centre are designed to support the curriculum while building students' confidence. Whether you take your Year 7s for a secondary transition course, your Year 10s on a field studies trip to discover North Wales' hotspots, or your Year 11s for an exam support course, Conway Centres, Anglesey has something for every secondary school to enjoy.

For more information, visit [www.conwaycentres.co.uk](http://www.conwaycentres.co.uk) or email [conwaycentres@edsential.co.uk](mailto:conwaycentres@edsential.co.uk)

### PGL French language & culture trip

Break out of the classroom and build your students' cultural capital with a trip to Paris! Inspire their French language journey and watch students' confidence soar when you visit PGL's Château de Grande Romaine. It's the ideal base to explore the very best that Paris has to offer; as it's located just 20 miles from the capital, you're never too far from the inspiring cultural experiences of a visit to the Eiffel Tower or a cruise along the Seine. With pre-arranged and tailor-made trips available, you can ensure your individual requirements and language learning objectives are met throughout.

Find out more at [schoolsandgroups.pgl.co.uk/french-package](http://schoolsandgroups.pgl.co.uk/french-package) and [schoolsandgroups.pgl.co.uk/french-tailor-made](http://schoolsandgroups.pgl.co.uk/french-tailor-made) and discover the sights of Paris next year.



#### DID YOU KNOW?

Formerly the Earth Centre, one of the Millennium Commission projects, Dearne Valley was transformed into a state-of-the-art sustainable activity centre in 2012.

### Kingswood Dearne Valley

Kingswood's most environmentally sustainable site, Dearne Valley is a state-of-the-art activity centre featuring one of Europe's largest solar panels and an on-site water treatment plant. Residential guests can choose between 4–16-bed dormitories, opt for the true camper experience in the Adventure Lodges, or enjoy luxurious eco-pod accommodation. The on-site activity park includes a challenging high ropes course featuring the popular Jacob's ladder and Leap of Faith, plus a climbing tower, zipline and more. There's also a purpose-built water sports lake and access to the River Don, so pupils can try their hand at canoeing, kayaking and raft-building.

Kingswood still has availability in July–September 2024 – visit [www.kingswood.co.uk](http://www.kingswood.co.uk) or email [sales@kingswood.co.uk](mailto:sales@kingswood.co.uk) to find out more.



### European Study Tours

European Study Tours has been creating educational trips in the UK and beyond for over 40 years, recognising the invaluable benefits of learning outside the classroom. They provide an unrivalled choice of educational trips to destinations around the world, and their expert team will tailor-make your ideal itinerary to align with your curriculum, suit budget specifications and enrich students' learning. You can rely on

European Study Tours expertise to deliver educational trips that give students the chance to release their potential in the big, wide world, spark curiosity and broaden their horizons.

For more information, visit [www.euro-study-tours.co.uk](http://www.euro-study-tours.co.uk)



### Halsbury Travel

Halsbury Travel has been taking learning beyond the classroom for nearly 40 years, so its team know that a passion for learning starts with 'wow'. Fully accredited, they design your trip around your group's needs and will be with you every step of the way, so you can concentrate on what you do best. Halsbury offers school trips for every subject, as well as unforgettable ski trips, sports tours and music tours. So, whether you want to get your linguists talking, travel back in time with your historians, or inspire the sports stars and musical maestros of the future, Halsbury is here to help.

To find out more, visit [www.halsbury.com](http://www.halsbury.com)

### Experience Education Student Travel Group

Over the past four decades, the Experience Education group of companies have supported over 3,000 schools and groups across the UK with educational travel experiences tailored to learning and individual needs. Their teams of travel experts have made it possible for more than 1.5 million travellers to explore 1000+ incredible destinations. You may already know Experience Education as *Travelbound* for curriculum tours, *Edwin Doran Sports Tours*, and *MasterClass*

for unique sporting and coaching experiences; *SkiBound* for school ski trips; *World Challenge*, who deliver unforgettable expeditions; or even *JCA* for some of the best activity centre residentials available in the UK.

To find out more, visit [www.experienceeducation.com](http://www.experienceeducation.com)



#### TRAVEL EXPERTS

Experience Education's specialist brands operate across five distinct travel categories: curriculum tours, expeditions, ski trips, sports tours, and UK activity centres.



### Travelbound

Travelbound provides schools, colleges, universities, and music groups with curriculum tours around the world. Supporting UK schools in maximising learning outside the classroom, it is a recognised holder of the Council for Learning Outside the Classroom's Quality Badge and a full member of the School Travel Forum. Whether it's a cross-curricular trip to Normandy, where groups can stay at Travelbound's own Château du Molay and access additional on-site activities, or tours to New York and beyond, Travelbound has become one of the most recognised names in school travel for UK educational establishments.

Find out more at [www.travelbound.co.uk](http://www.travelbound.co.uk)



### JCA

Immerse your students in the ultimate adventure with JCA's exhilarating activity residential trips! Designed for UK schools seeking dynamic outdoor experiences, its itineraries blend adrenaline-pumping activities like abseiling, archery, and kayaking to provide invaluable learning opportunities. JCA-trained instructors ensure safety while fostering teamwork, resilience, and personal growth.

Nestled in the stunning natural settings of Shropshire and the Cotswolds, JCA's accommodation provides a comfortable retreat after thrilling days of exploration. Whether it's facing fears, developing teamwork or reaching individual goals, students develop confidence and a deep appreciation for the outdoors. Join JCA for an unforgettable journey, where every moment is a lesson and every challenge is a triumph.

Visit [www.jca-adventure.co.uk](http://www.jca-adventure.co.uk)

### Edwin Doran Sports Tours

Delivering dynamic sports tours tailored for UK schools and clubs, Edwin Doran can help your group explore the globe while honing their skills and fostering team spirit in incredible locations. From football in Spain to rugby in South Africa, you'll benefit from unparalleled access to fixtures with international schools and clubs, coaching opportunities, and immersive cultural experiences. Meticulously planned itineraries ensure seamless logistics, allowing players and coaches to focus solely on performance and camaraderie. With a commitment to excellence and unforgettable experiences, Edwin Doran Sports Tours empowers athletes to reach new heights on and off the field.

Book now for an enriching journey where sportsmanship and adventure collide to create lifelong memories. Visit

[www.edwindoran.com](http://www.edwindoran.com)





# Inspiring curiosity. Shaping futures.



**Experience** - creating educational tours for schools & colleges for over 40 years



**Knowledge** - a dedicated team of experts who will tailor-make your group's perfect tour



**Support** - throughout every stage, including 24h emergency cover whilst away



**Confidence** - we're ABTA & ATOL protected



**Trust** - assured member of the School Travel Forum and LOTC Quality Badge holder



**LIVE!** - our exclusive student learning events held in UK, Disneyland® Paris & New York





## WE'RE THE EXPERTS

# “We’ll help at every stage”

European Study Tours’ Adam Beaton explains how their expertise can fuel an inspirational visit to New York City

### Which subjects benefit from a tour to NYC?

New York offers a wealth of educational opportunities, meaning you can tailor your NYC tour to accommodate students studying various subjects, including history, cultural & enrichment, English, drama and performing arts, and beyond. Students are immersed in an inspirational learning experience; the vibrant city is full of iconic landmarks and historic attractions that complement their chosen subjects, creating lasting memories and fostering a deeper understanding of various study themes.

### How do you support school groups?

European Study Tours are there to help at every stage of your tour; we have been organising school tours for over 40 years and are experts in planning inspirational itineraries. As well as industry-leading safety accreditations, we also have our own safety management system and offer the added reassurance of preview visits, full insurance, and 24-hour on-tour assistance from experienced staff. We also offer meet-and-greets with local representatives to support you while on tour and to answer any questions you may have.

### What goes into planning an educational tour?

Once you have placed your booking, you’ll work closely with your own knowledgeable and experienced educational tour planner to craft the perfect itinerary. Our team recognise the benefits of learning outside the classroom, truly understanding how it develops curiosity and increases students’ confidence, and we’re always keen to share our insights and recommendations. We’ll work with you to plan the right balance of excursions every day and pre-arrange visits, entrance tickets, passes, and meals to ensure a seamless and memorable tour for your students.



#### EXPERT PROFILE

**Name:** Adam Beaton

**Job title:** Educational Tour Planner

**Area of expertise:** New York tours

**Best part of my job:** Seeing groups make memories to last a lifetime



### Can you share some of the highlights of an NYC tour?

You can fill your itinerary with a diverse range of enriching, educational visits that will wow your students and create long-lasting memories for many years to come. Embark on a captivating journey with a ferry ride to see the impressive Statue of Liberty, where students can visit Ellis Island and deepen their understanding of American history and immigration. At the MoMA, students can find some of the world’s finest art collections. Or take some time to reflect at the 9/11 Memorial before immersing your students in a unique and unforgettable Broadway experience.

### What are your LIVE! student events?

School groups can enhance their New York City experience at European Study Tours Performing Arts, Business, and Art & Design LIVE! events. From Broadway stars to curators from the most iconic art galleries in the world and speakers from companies at the heart of the global hub of business, these immersive events have been designed to bring the curriculum to life and show your students the subject in action. They’ll get the opportunity to hear from a variety of leading professionals in the industry, take part in an interactive Q&A session, and gain insights into the exciting career opportunities available.

## ASK ME ABOUT

**TAILORING ITINERARIES** – Get in touch with our experts, who can tailor-make your itinerary to suit your learning requirements and budget needs.

**LINKING YOUR STUDY THEMES** – Speak to our expert team and discover how you can link your itinerary to match your current curriculum.

**HOW WE MAKE TRIP PLANNING EASY** – Find out more about our latest technology, including our award-winning travel app and market-leading My Tour Manager.

euro-study-tours.co.uk | T: 0330 838 4120 | E: estsales@euro-study-tours.co.uk



They will take away far more than just  
**FANTASTIC**  
*memories...*



E-mail [conwaycentres@edsential.co.uk](mailto:conwaycentres@edsential.co.uk)  
visit [www.conwaycentres.co.uk](http://www.conwaycentres.co.uk) or call **01248 714501**  
to find out how we could give your students the best school residential experience.



*Dive in to your  
next residential*



## Q&amp;A

# “Our team are experts in their field”

Maria McQuillan, Head of Conway Centres, Anglesey, explains what goes into their award-winning residentials

## 30 SECOND BRIEFING

Conway Centres, Anglesey offers high-quality outdoor adventure and cultural residential courses that are a powerful development experience. They empower, inspire, challenge and develop young people, making an educational and life-changing difference.

### Tell us more about the centre...

Located in North Wales within 169 acres of sprawling National Trust land and with its own private dock on the stunning Menai Strait, Conway Centres, Anglesey is home to high adventure! Whether you need accommodation for a class of 30 or want to run a residential for a full year, multiple year groups, or team up with your MAT, it's ideal – the centre accommodates up to 420, making it extremely versatile for secondary residential trips.

### What activities and programmes can schools enjoy?

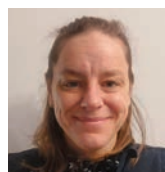
We offer a range of water-based, high-rope, land-based, off-site, and arts activities and pride ourselves that our programmes are designed with personal and academic development and schools in mind. Whether you want children to build resilience by taking on high-adventure activities, improve grades with a revision adventure residential, or explore all that North Wales has to offer, we can help. Our schools tell us what their goals are, and our team tailor activities and programmes to support them.

### Why are residentials so important?

Even though residentials aren't compulsory, they're a key and popular part of the school year. When young people visit Conway Centres, they take away far more than fantastic memories: the chance to try new experiences, overcome fears, claim independence, and develop personally are just a few reasons why these trips are so important, all while having fun, of course!

### You recently won 'Best Residential Experience' at the School Travel Awards – what sets Conway Centres apart?

We were so pleased to win – a huge thank you to all the schools who voted for us! Schools say that our staff are a highlight of their stay. We focus on recruiting the highest calibre of staff, people who will be with us for years, not just a season. Our team are experts in their field and truly understand the education sector. From keeping up with what's new in the curriculum to supporting schools when they're back in the classroom, we know that a residential should be an extension of classroom learning.



#### ABOUT MARIA

Maria is Head of Conway Centres, Anglesey.

### What type of residentials are schools booking at the moment?

The schools who visit us understand the benefits of a Conway Centres residential, which is why many are making the switch from summer to autumn/winter residentials. Not only are students challenged in tougher weather conditions, but by visiting in the autumn term, schools are able to reap the benefits for the rest of the academic year. They pay less but take away so much more!

## WHAT'S THE DIFFERENCE

- Education is at the heart of everything Conway Centres do – your programme can be tailored to support your learning outcomes
- Your residential will be run by the most experienced tutors in the industry
- Adventure is never far away – enjoy off-site activities in some of North Wales' hotspots



www.conwaycentres.co.uk T: 01248 714 501 E: conwaycentres@edsential.co.uk



Unforgettable  
learning  
experiences

Eye-opening  
education for a  
lifetime of  
*inspiration*

Enriching  
school trips  
with NST

We've got over 55 years'  
experience creating expertly  
planned trips

Rest assured – protected  
by ABTA & ATOL

24-hour support & dedicated  
destination representatives

Tailormade itineraries for  
worldwide destinations

Award-winning travel app  
& school trip organiser

Externally verified Safety  
Management System



6 REASONS TO VISIT...

# Château d'Ebblinghem

NST's exclusive accommodation in Northern France is the ideal base for students to experience a culture and lifestyle that's different to their own

## 1 The perfect school group accommodation

NST's purpose-built accommodation, Château d'Ebblinghem has four separate buildings, each designed to accommodate student and teacher en-suite bedrooms together. For teachers, you can recharge after an activity-filled day in your dedicated teacher lounge, complete with cheese and wine! Discover the château's superb private grounds, as well as recreational facilities such as the newly refurbished games room, featuring a pool table, air hockey, chill-out zones and more.

### GOOD TO KNOW

NST's expert team will create an enriching learning experience, ensuring your visit makes lasting memories for students while fostering confidence and independence.



## 2 Cross-curricular learning

Located on the Opal Coast in Northern France, NST's château is ideally positioned for a variety of French language, history and cultural excursions, offering your group a wealth of educational experiences. Targeted excursions include a memorable trip to WWI Battlefield sites and opportunities to visit local markets and boulangeries, where students can interact with native speakers and practise their French language skills.

enjoyable as possible. They are there to give you a helping hand, including meeting you on arrival and organising your group into their rooms, accompanying you on excursions and providing practical and historical information, organising evening activities, and liaising with you throughout the day to ensure good communication during your stay.

## 4 FREE evening activities

NST's free programme of evening activities are designed to enhance your students' itinerary with a range of fun cultural experiences. Activities include crepe making, a snail tasting experience, dancing the night away with a silent disco, and experiencing the thrill of action-packed archery tag. For more subject-based activities, dive into history with a close-up look at WWI artefacts, and for French language students, immerse them in activities conducted entirely in French.

## 3 A helping hand

When staying at the château, you will be assigned a group co-ordinator to make your stay as comfortable and



experience. Students will develop their conversational and comprehension skills through a range of exciting target language-focused visits. During the visits, they will have the opportunity to interact with native speakers and practise their French, with the support of your very own French-speaking group co-ordinator, who will encourage students to engage with the French language.

## 6 The perfect location

Set in an ideal location, Château d'Ebblinghem is just 45 minutes away from the Channel ports and eight kilometres east of St Omer on the Opal Coast. That means your days won't consist of travelling; instead, NST's expert team will work closely with you to craft a perfect itinerary for you and your students to gain the most out of your trip. You can trust NST to make your experience as seamless as possible.





# Give them confidence, **resilience** and life skills

Award-winning **outdoor adventure  
residential**s for all ages



**Skills Builder**  
Practising  
essential skills

2022-23

**36% increase  
in resilience**  
2023 Skills4Life  
study

For 40 years, we at Kingswood have been harnessing and refining the power of outdoor adventure education to help young people find their footing.

Our programmes are informed by research in sports pedagogy and adventure education, to ensure they continue to bolster young people with the skills they need to succeed in their academic, professional and personal lives.

[sales@kingswood.co.uk](mailto:sales@kingswood.co.uk)





## EVERY MAGICAL MINUTE

# Incredible camping

Whether it's part of a three-day trip or a week-long adventure, a typical day at Kingswood is anything but ordinary...

**DON'T FORGET!**

Your trip includes all meals, and the team are happy to accommodate special dietary requirements such as allergies or religious practices.

**9:00am | Zipwire**

An adrenaline rush to kick off the day! While students summon the courage to step off the platform and whizz through the air, their classmates offer encouragement and cheer them on. Ziplining gives kids a valuable experience of risk-taking in a safe, supported environment.

**11:00am | Obstacle challenge**

This series of problem-solving tasks encourages children to hear each other's ideas, communicate effectively, and build trust as they work towards a common goal. To ensure kids are always reaching their full potential, Kingswood's highly trained instructors are great at adapting the course to suit a group's ability.

**1:30pm | Jacob's ladder**

This is where trust and teamwork truly win the game. Groups of 2–3 climbers navigate their way up a giant high-ropes

ladder of horizontally suspended logs, with each level getting trickier and more nerve-jangling. Pupils must communicate effectively, weigh up their options, and implement their plan in order to make it to the top!

**4:00pm | Bushcraft**

Giving kids a chance to step away from 21st century distractions and explore the wild! Kingswood's trained bushcraft instructors will lead students through a wide range of survival skills, such as shelter building, fire lighting, and cooking a meal outdoors.

**7:00pm | Campfire**

Is there a more quintessential camping experience than sitting around a fire, toasting marshmallows, and singing songs? This is a great way for both pupils and teachers to unwind and reflect on their full day of activities.

**9:00pm | Bedtime**

Pupils head to bed for a good night's sleep before another day of adventure! Kingswood's 11 centres come in all shapes and sizes, and accommodation options include 4–16-bed dormitories, adventure lodges, and eco-pods.

## { BEFORE YOU GO }

*"Kingswood made a real effort to make our trip as memorable as possible. The aim was to develop team and communication skills, which we feel was achieved."*

The Royal Wolverhampton School, visited Staffordshire, May 2023

*"The expertise of the tutor assigned to our group was high, and our students really connected with him. They were truly engaged."*

The Harefield Academy, visited Overstrand Hall, July 2023

*"From the start of the process, the booking has been so easy to navigate, with communication maintained between finance, transport, and site of residential."*

Gunnersbury Catholic School, visited Isle of Wight, May 2023



# Bringing it HOME

Wish you could bottle that school trip excitement? Grab available learning resources with both hands, and you'll keep the magic alive, says **Jodie Greene**

**H**ave you ever been on a fantastic school trip where the kids are buzzing, everyone learnt lots... and then the next day when you come to talk about it, no one can remember anything? Or worse, their highlight was their lunch, with everything else forgotten?

I know the scenario all too well. I remember a particular trip I took my class on: I spent ages looking for the perfect destination, did my pre-visit and knew exactly how I wanted the day to go. I spent a lifetime getting permission slips back (that deserves a whole article of its own!) and

than the study topic itself. Being outside in a natural environment, in fresh air, is so beneficial for our health, both physically and mentally. Taking part in real hands-on activities is great for encouraging problem solving, communication and building friendships. We all also know children who

planning is and how a great trip is a satisfying reward for all the hard work. That's where the learning resources available at various trip venues come in. If you're not tapping into them already, they could be a great source of support.

## Making the most

Of course, after a trip teachers (and children) need resources with relevant learning outcomes... but also materials that excite and inspire them to continue that learning. At Forestry England we've been working on just that. Visits to the nation's forests are a popular choice; a guided or self-guided trip is a great way to reap all the benefits of being in nature, but we also know the value of free, downloadable resources. Our resources for primary-aged pupils are linked to some of our most popular activities, such as our Superworm trail, and can be downloaded and used back in the classroom to harness that excitement post trip. We've also worked up separate lesson plans and activity sheets linking to the curriculum that can be used in any outdoor space. Or if you can't get outside,

*"I felt utterly deflated, and I spent hours creating resources for my class to work with after the trip, trying to keep the magic alive"*

finally we were ready to go. The trip itself was lovely, albeit a bit stressful (anyone who manages children and parents outside of school deserves a medal). The children learnt loads, had a great time and we all got back in one piece. But the next day it was like we'd never been; the excitement of the trip had vanished, never to return, and I felt utterly deflated. I spent hours creating resources for my class to work with after the trip, trying to keep the magic alive. I thought then, 'Surely there must be an easier way?'

## Stretching the benefits

The benefits of a school trip are so much wider

struggle with day-to-day learning, bouncing off the walls whilst you scramble to find ways to inspire and engage them. For them, trips are even more important. What would be great for these children is to stretch out the positive effects of the trip, keeping their engagement and honouring their needs.

So what's out there? As teachers, we want the best for our children and to make the most out of every learning opportunity. What I would have loved were some resources my kids could have used back in the classroom: something to keep the excitement alive but also revisit the learning. And something I didn't have to spend hours trying to create myself. I remember how time-consuming



some that you can just use in the classroom too. We've designed our geography lesson plan to be utilised before, during and after a trip: the perfect way to make a teacher's life that little bit easier.

Whilst our resources, and those supplied by other local school trip providers, are aimed towards a school visit to a specific location, you could also use them in your local woodland or park. With the current economic climate being what it is, I'm all too aware that many schools won't have the capacity or the finances to go on school trips. The beautiful thing about free nature-focused resources like ours is that they can be used anywhere outdoors. You could take your class on a local walk or even around the school grounds. There are plenty of ways to use them that still offer fun and interesting learning opportunities, whether to build wonderful connections with nature, encourage children to share their experiences and bring the outside back into your classroom and utilise the

beauty of nature without needing to go anywhere.

Most resources can also be repurposed and used in other year groups or even in school clubs. As a teacher you can hang on to them, knowing that they'll stay current, which makes them shareable with your colleagues and any nature clubs you might have.

Being a teacher is hard; we all want to make that magical learning experience much more than a distant memory once the children are back at school. It's difficult to understand until you've been there, but I know that important element of continuing the magic from a trip can take a lot of work once back in the classroom. Make sure you grab every resource you can to help you and your class; free resources do the hard work so you don't have to (for a day at least)!

## VISITING LOCAL WOODLAND

**1. GET FAMILIARISED.** Whether you're going to your local woods or further afield, a pre-site visit is a must. You'll want to feel confidence that on arriving with a gaggle of 30 kids, you know exactly where you're going. Forestry England has a sample risk assessment to help with your planning.

**2. FIND THE PERFECT SPOT.** Decide what you want to get out of your visit and plan around that. Maybe you want to go on a walk first and foremost, or you want to focus more on spotting wildlife? Either way, plan accordingly and remember to identify a great place for lunch and the nearest loos!


**3. MAKE SURE ALL YOUR CHILDREN ENGAGE.** To keep children together as a group and engaged it's important to give them something to do. Will they have a checklist for their walk? Will they use a spotter sheet? Could they write down describing words as they go along?

**4. KEEP IT SIMPLE.** Yes, we all want our children to do some great learning on a school trip, but sometimes giving them a chance to reconnect with nature, to de-stress and have fun is more than enough.

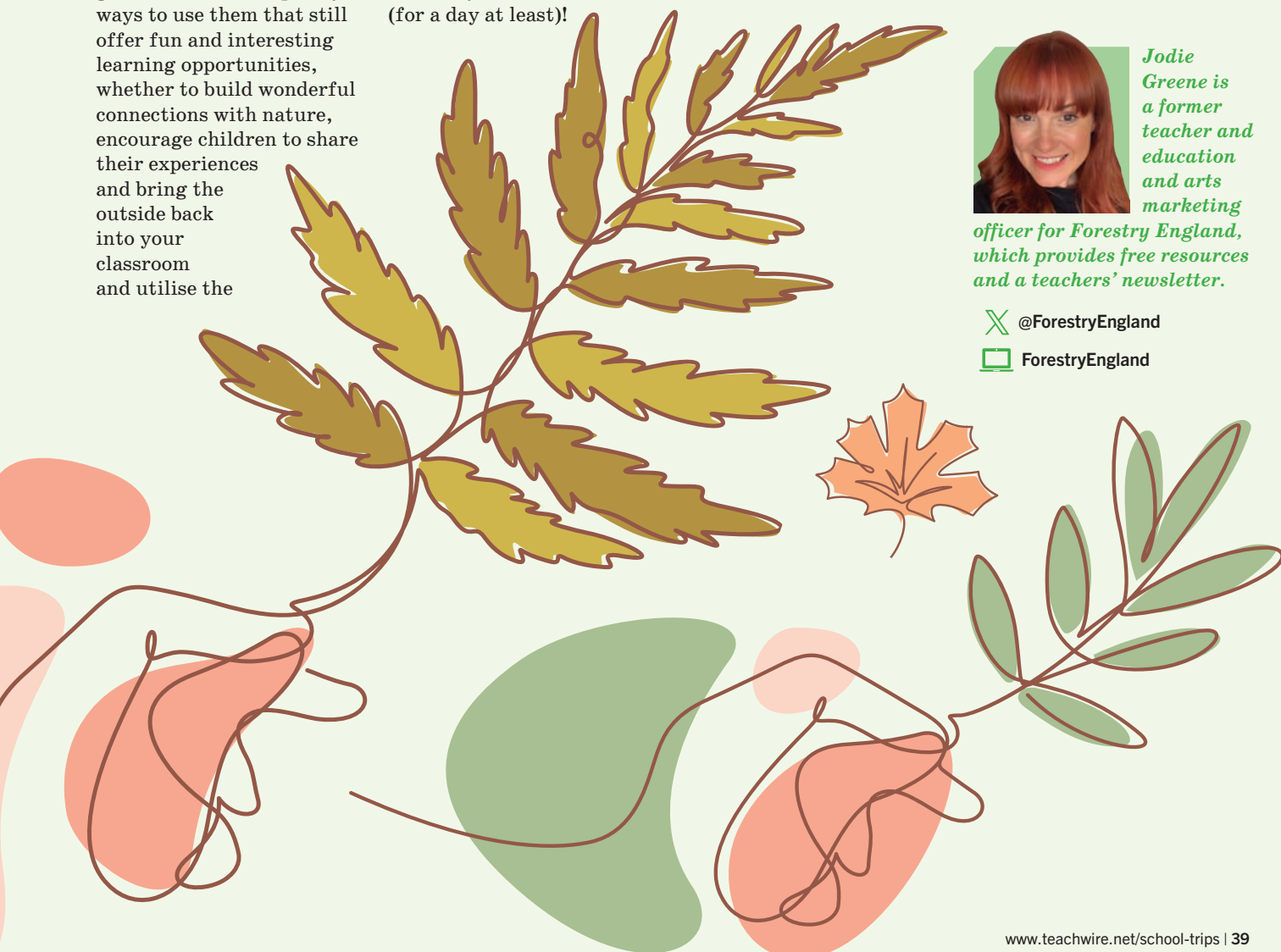
**5. FORAGE MATERIALS TO CONTINUE THE LEARNING.** Make sure you take some natural bits of the woodland back to school with you. Fallen leaves, pine cones and sticks can be used for displays, for further learning, or for some beautiful artwork!



*Jodie Greene is a former teacher and education and arts marketing officer for Forestry England, which provides free resources and a teachers' newsletter.*

 @ForestryEngland

 ForestryEngland





# 10 TO CONSIDER: INSPIRING IDEAS

Take your students somewhere new and fascinating this year with these brilliant school trip suggestions



## The Big Bang Fair

Get students thinking about STEM careers and broaden their horizons with a trip to The Big Bang Fair at the NEC Birmingham from 19 to 21 June. Your students can discover and unlock new possibilities at the UK's biggest celebration of STEM. Students can get stuck in with hands-on activities, inspiring careers panels, and amazing live shows from the Royal Institution and Medical Mavericks, completely free of charge. Plus, explore The Fair with an interactive treasure trail – build a sticker collection, take a careers quiz, and meet scientists, engineers and STEM professionals.

Visit [www.thebigbang.org.uk/fair](http://www.thebigbang.org.uk/fair) to book free tickets today.

### GOOD TO KNOW

The Big Bang Fair is open to schools in half-day sessions – register for your choice of morning (9am–12pm) or afternoon (1pm–4pm) slots.





### SkiBound

Embark on an unforgettable ski adventure! SkiBound provides school ski trips across Europe and North America, its expertly crafted packages offering students the thrill of world-renowned slopes, ski school instruction, and après activities. Your group will experience the unparalleled service of exclusive Clubhotels nestled in the heart of France's premier ski resorts. From top-notch amenities to doorstep skiing options, the SkiBound team ensure every aspect of your trip exceeds expectations. Whether it's conquering the Alps or shredding the Rockies, they prioritise safety, learning, and unparalleled excitement.

Join them for a trip where memories are made and friendships are forged amidst breath-taking alpine landscapes. Visit [www.skibound.co.uk](http://www.skibound.co.uk)

### World Challenge

World Challenge has seen its life-changing experiences bring out the best in young travellers for many years – since 1987 in fact. That fact is perhaps best illustrated by the 150,000+ alumni who have returned home from their expeditions forever changed, many being inspired to continue the pursuit of positive global citizenship, from advocacy work in foreign nations through to leading world-shaping environmental initiatives.

World Challenge offers much more than a trip overseas. It provides transformative travel experiences right around the world. These experiences complement school learning, giving students the opportunity to become true life-learners and true global citizens.

To find out more, visit [www.weareworldchallenge.com](http://www.weareworldchallenge.com)



### Kingswood Overstrand Hall

This Grade 1-listed Tudor manor house is one of Kingswood's most distinctive centres, with access to a stretch of sandy coastline designated an Area of Outstanding Natural Beauty. Its nine-acre activity park invites students to face their fears on the high ropes course, boost their teamwork on Jacob's ladder, explore an artificial caving system, or test their critical thinking in a woodland problem-solving course. This location also offers excursions further afield, from a river cruise, walking tour, or museum visits in London to punting in Cambridge and a day at the Brighton SeaLife Centre.

Overstrand Hall still has availability for school trips in July–September 2024.

Visit [www.kingswood.co.uk](http://www.kingswood.co.uk) or email [sales@kingswood.co.uk](mailto:sales@kingswood.co.uk)

#### ENJOY YOUR STAY!

The spectacular Lutyens Manor House hosts both students and group leaders during school visits and also features classroom space.



### Paultons Park

Award-winning Paultons Park is the ultimate venue for school visits, with over 70 exhilarating rides and attractions, all set in beautiful gardens, plus a fine selection of birds and animals. Whether your focus is learning, reward, or a mixture of both, the dedicated education team will be on hand every step of the way. Schools can supplement their visit with a workshop in the Learning Lab, where a range of topics are covered, including forces, programming, literacy and cross-curricular STEM. All workshops are linked to the park and rides. From planning visits to a 'pay after' facility, booking is simple.

For more information, email  
Education@paultons.co.uk or visit  
[www.paultonspark.co.uk/tickets/school-trips](http://www.paultonspark.co.uk/tickets/school-trips)



### Young V&A – Japan: Myths to Manga

*Japan: Myths to Manga* is Young V&A's first exhibition! Opened on 14 October 2023, it invites children to journey through the sky, sea, forest, and city and explore how design, folklore, and storytelling have influenced Japanese popular culture, technology and design. Key highlights include films from Studio Ghibli, a manga-inspired coat by Comme des Garçons, and historic and contemporary examples of manga. Schools can book for free now.

Find out more at [www.vam.ac.uk/exhibitions/japan-myths-to-manga](http://www.vam.ac.uk/exhibitions/japan-myths-to-manga)

### English Heritage

From grand medieval castles to the battlefield where the armies of King Harold and William the Conqueror clashed, and a Roman villa to a Cold War bunker, the places where history happened bring a topic to life. Standing in these very spots reinforces your teaching in the classroom, so inspire your students with a free self-led visit to over 400 English Heritage sites, or let the experts take the lead in an interactive Discovery Visit workshop. Support your visit with free teaching resources that have been developed by the team of qualified teachers, educational experts and historians.

For more information or to book your trip, visit  
[www.english-heritage.org.uk/learn/school-visits](http://www.english-heritage.org.uk/learn/school-visits)





### Colchester Zoo

Colchester Zoo is more than an award-winning family day out; it offers an inspiring backdrop for education too. Colchester Zoo provides a wide variety of engaging school sessions full of inspiring content, with direct links to the national curriculum. From art to geography, science to debating skills, there are sessions for all ages. During the workshops, learning is brought to life through the use of biofacts. Skulls, feathers, furs and taxidermy – the zoo's biofact store contains hundreds of amazing items. With the help of conservation educators, these interesting objects are used to enhance learning opportunities, inviting visitors to get up close and personal with the wonder of wildlife!

To learn more, visit [colchester-zoo.com](http://colchester-zoo.com) or email [education@colchesterzoo.org](mailto:education@colchesterzoo.org)



### National Museums Liverpool

National Museums Liverpool offers a range of curriculum-linked workshops for schools across its museums and galleries. Sessions are led by experienced facilitators, who use fascinating collections and exhibitions to engage pupils. At World Museum, children can explore its planetarium and aquarium, and enjoy sessions on topics like Ancient Egypt. Over at Museum of Liverpool, there are workshops about Anglo-Saxons and Vikings, the Victorians, trade and industry, and more. Maritime Museum is an amazing place to learn about RMS Titanic, while International Slavery Museum, located in the same building, offers workshops exploring the impacts and legacies of transatlantic slavery. Finally, the Walker Art Gallery offers gallery tours as well as sessions on subjects like Greek mythology.

Find out more at

[www.liverpoolmuseums.org.uk/learn/workshops](http://www.liverpoolmuseums.org.uk/learn/workshops)



Photography © Robin Clewley

### Kingswood Peak Venture

Situated on the doorstep of the Peak District, Kingswood Peak Venture is the ideal location for a day of adventure outdoors. The activity park is nestled in sheltered woodlands and fields, where your group can take on the high ropes course, the climbing tower and the exhilarating 3G Swing, to name but a few. On the nearby Scout Dike Reservoir, students can put their team-building skills to the test in a raft-building challenge and learn canoeing from highly trained instructors. On-site, you'll also find archery, aeroball, laser tag, and new fencing sessions led by British Fencing's Ofsted-aligned 'We Are Forging Futures' framework.

Visit [www.kingswood.co.uk](http://www.kingswood.co.uk) or email [sales@kingswood.co.uk](mailto:sales@kingswood.co.uk)







West Midlands

**SAFARI  
PARK**

# WILD SCHOOL TRIPS!

NEW  
EDUCATIONAL  
SESSIONS  
FOR 2024



FROM **£12pp**

**BOOK NOW**  
**WMSP.CO.UK**





**EVERY MAGICAL MINUTE**

# Discover wild ways to learn!

Embrace adventure and plan an unforgettable experience with an educational trip to West Midlands Safari Park. . .

**DON'T MISS OUT**

Enjoy the full day-out experience at WMSP by upgrading your visit to include ride wristbands for the Adventure Theme Park during the summer season.

**10:00am**

First up, it is time to head out on the fantastic four-mile Safari Drive, where your students will get the chance to meet some of the incredible animals that call WMSP home. With the help of one of the Park's experienced rangers, they'll learn about the varied species such as giraffes, lions, tigers, and camels.

**12:00pm**

Feeling peckish? Stop off at one of the Park's many eateries. There's a fantastic choice of dishes available, suitable for everyone, whether you want to dine in or eat on-the-go as you explore. Choose from delicious burgers at Burger Co. or exquisite pizzas at Dino Diner.

**12:30pm**

Head into WMSP's state-of-the-art, sustainably built Safari Academy and be immersed in the Park's engaging discovery sessions led by members of the knowledgeable education team. Students can explore a whole host of interactive sessions, including Phobia workshops and Defining Deforestation & Ecosystems.

**1:15pm**

Time to stretch those legs and take a moment to stroll around the Park's many walk-through areas, including the African Walking Trail. Students will have the chance to see animals such as giraffes, rhinos, and elephants on foot or take in the wonders of the African Village and explore Lemur Woods,

where the resident troop of lemurs quite literally walk alongside you.

**2:00pm**

Ready for a thrill? Be sure to take the opportunity to experience WMSP's Adventure Theme Park during your visit. Students can take a spin on the mighty Kong or enjoy a slower pace on the Carousel ride.

**3:30pm**

The fun is still not over! Finish your action-packed day with a visit to the Park's amazing Sea Lion Show or any of the other daily animal talks. There, students will hear everything there is to know from one of the insightful keepers.

## { BEFORE YOU GO }

**NO DEPOSITS**

Booking your school trip to West Midlands Safari Park is designed to be stress free, with no forms to complete, no deposits needed, and no cancellation charges either.

**PREVIEW VISIT**

Once you've booked, be sure to claim your two teacher preview tickets. Familiarise yourself with the Park's layout and use the handy visit guidelines to complete any risk assessments.

**SOCIAL STORY**

For students who might be feeling a little anxious about visiting the Park, check out WMSP's social story, which documents everything they will see, smell, and hear during their trip.



# The Big Bang Fair

Explore hands-on STEM activities, careers panels, and workshops that will leave students on the edge of their seats

## 1 Hands-on activities

From piloting submarines and driving robots to investigating the properties of materials, there's something for every student at The Big Bang Fair. Ask questions, get involved, and let your class explore exciting STEM careers.

## 2 Inspiring careers panels

What do scientists look like? Can you spot an engineer? Challenge your students' perceptions of who can do a STEM career with inspiring careers panels. Discover different routes into

### GOOD TO KNOW

In 2024, The Big Bang Fair will take place at the NEC in Birmingham from Wednesday 19 to Friday 21 June. Book your free half-day session today.

STEM, what a day in the life looks like, and more.

## 3 Amazing live shows

See STEM live on stage with shows from the Royal Institution and Medical Mavericks, completely free of charge. Catch the brand-new show from the Royal Institution before anyone else, and go on an adventure in AI.

## 4 Interactive treasure trail

Explore to win! Build a sticker collection, take a careers quiz and meet scientists, engineers, and STEM professionals as you explore The Fair. Complete three quests during your day at The Big Bang Fair for a chance to win £100.



## 5 Meet real scientists and engineers

Do your class love asking questions? Get inspired with careers in STEM, discover the variety and diversity of careers available, play STEM bingo and much more. All weird and wonderful questions are welcome!



[www.thebigbang.org.uk/fair](http://www.thebigbang.org.uk/fair)

E: [info@thebigbang.org.uk](mailto:info@thebigbang.org.uk)



**19 TO 21 JUNE 2024**  
**BOOK FREE TICKETS!**

- Free live STEM shows
- Hands-on activities
- Wow your students with STEM
- Challenge their perceptions
- Build their confidence
- Meet scientists and engineers



**FIND OUT MORE:**

[www.thebigbang.org.uk/fair](http://www.thebigbang.org.uk/fair)







## 5 THINGS TO DO // HISTORIC ROYAL PALACES

# A day at the palace

Choose from four fascinating sites and a range of interactive school sessions to help your students get hands-on with history...

## 1 Visit incredible palaces

With 1,000 years of evidence to interpret, Royal Historic Palaces' interactive sessions for KS3–5 students are designed to encourage them to delve deeper, consider historical concepts, and engage in discussion and debate in the very spaces where history happened.

### GOOD TO KNOW

Visit the Historic Royal Palaces website to plan your educational visit, search for learning resources, and take advantage of CPD and training opportunities for teachers.

the Wars of the Roses and Henry VIII's reign.

## 3 Hampton Court Palace

Using contemporary sources and the Palace buildings, study the English Reformation, the rise and fall of Thomas

Wolsey, and the impact that changes in religion, the monarchy and global culture had on the stability of Tudor society.

## 4 Kensington Palace

From September 2024, your students can discover how Kensington Palace's monarchs – William III, Queen Anne and George II – played



integral roles in the development of the British Empire.

## 5 Hillsborough Castle and Gardens

Uncover the pivotal role the Castle has played in modern Northern Irish history, discover natural and man-made habitats in the Gardens, and explore the Castle's collection of art and objects to create historically inspired textile designs.



[www.hrp.org.uk/schools](http://www.hrp.org.uk/schools)



# IMMERSE YOURSELF IN HISTORY



- Enquiry-based sessions for KS3-5
- Activity trails aligned to the national curriculum
- Free pre- and post- visit resources

**BOOK A VISIT AT [WWW.HRP.ORG.UK/SCHOOLS](http://WWW.HRP.ORG.UK/SCHOOLS)**



# ALL ABOARD!

Rising EHCPs may be the tip of growing SEND need, so what does really good, inclusive planning for your next trip look like?

**F**or a child with special educational needs, being able to access the wider world via school can be more important than it is for their peers,” says Kelly Jarvis, former head of a flagship residential school for young people with complex needs. “For a lot of families where children have additional needs it can be incredibly challenging to get out at weekends, so I feel it’s almost schools’ duty to provide that.” Now a specialist educator with a SEND consultancy (Sunshine-support.org), she advises SLTs on delivering inclusion on their own school trips. “I can see how in a mainstream setting it might feel daunting, but any teacher organising a trip where there are children with special needs or disabilities needs to start with the idea that it will work,” she says. “Then work backwards from that. Think, ‘This is going to work because I need to take these steps. To complete those steps I need to ask these people these things and get these staff members to do this.’”

## Where to begin?

The first step is to make sure you fully understand the needs of the individuals you intend to take off site. “An EHCP should give enough of a guide as to what additional needs a pupil may have within an educational context or setting,” says Steve Swift, CEO of youth disabilities

charity Rose Road Association (roseroad.org.uk). “But, it won’t contain as much information as perhaps a care plan might have – for example, the ones we use document all the care needs of a child, including their medication, their triggers, techniques for supporting them. So when planning trips, it’s useful to ask families additional questions to provide a fuller answer. In a typical outreach setting, the provider spends time with each family to better understand an individual so trips can be designed to provide the most opportunity possible. In a mainstream educational setting this could be more of a challenge, but understanding ‘triggers’ and ‘what works’ approaches

will allow for a safer and more enjoyable trip for all.”

Kelly advises an individual risk assessment for each child linked to their EHCP, which gives staff a first point of call to see if, for example, an ad hoc local trip down the road is possible, or if a second layer of planning is needed for going off-site. “Your line manager or SENCo should be your first point of call for risk assessments, because everything stems from that. We also had an ‘off-site status’ our children could attain,” she says, “so over a period of

time via closely shadowed trips they could learn how to do short travel in the local community. For a week residential the planning was astronomical. If you’re a mainstream teacher, make sure your risk assessments around medication are watertight (because that’s a really big deal), have contingency plans about returning to the setting if you need to, and sort your staff to pupil ratios.”

## Brief your team

“Trips should also be carefully planned so as not to create cognitive





## *“We’ve built up a library of assessments for venues so we know which work well and which to avoid”*

or sensory overload for children with specific needs,” says Katie Hinds, a chartered education psychologist and managing director of Changing Minds in Warrington, which works with schools, parents and young people. “All staff members who participate should have a good knowledge of the children’s needs and substitutes should be kept to a bare minimum.” This continuity will minimise unexpected challenges along the way. “The trip team should be well briefed with the risk assessment and access plan and should be familiar with the school’s critical incidence plan,” says Katie.

“There should be clear lines of accountability and hierarchy, and the trip lead should coordinate staff according to the needs of the cohort,” she adds. “If the trip is residential, the staff may wish to complete diary logs and arrange a system to share these with parents. For those children with complex medical and/or developmental needs, staff may need to liaise with specialist nurses to gain their insight into the process. In some instances, parents could also attend the trip in order to provide additional assistance to their child.” If this all sounds like a staffing headache, remember some destinations may be able to lighten the load. “In our experience, the staff at the venue are a huge factor to consider when booking activities,” adds Steve. “If they have training or background knowledge of disabilities, they tend to be far more accommodating.”

### **Access all areas**

Facilitating full access to all pupils is essential, so is there an accreditation – a shorthand for good access – to look for? “Not that we’ve heard of,” says Steve. “We usually contact the venue and request a copy of their risk assessment as well as a site map. Asking about the accessibility of the venue is key – is the whole centre wheelchair accessible, not just the ground level? Do they have a suitable changing place? We’ve built up a library

## **FIVE STEPS TO MORE INCLUSIVE OUTINGS**

### **COVER YOUR BASES**

“Your rigorous risk assessment should include specific considerations for children with additional needs,” says Katie. “Where children have physical disabilities, an additional access plan should also be undertaken, and all relevant first aid training should be in place, with staff carrying appropriate medications.”

### **INTERROGATE YOUR WORKINGS**

Get help, making sure your planning, risk assessments and contingency arrangements are watertight. “If you’re waking up in the night worrying what you’ve forgotten, a fresh pair of eyes on your plan can be really helpful,” says Kelly.

### **ASK QUESTIONS**

Remember, you’re not expected to be the expert here; destinations may have considerable experience to contribute. “Where possible, involve the parents and children in your planning,” adds Steve. “If you’re unsure of something, ask!”

### **CONSIDER THE SIMPLE THINGS**

“Take travel,” says Kelly. “Who’s going to sit where on the bus? What tech are they allowed for the journey? Will they need food? Lay expectations out beforehand – with a social story for those that need it – so nothing is a surprise.”

### **BE AMBITIOUS**

“Don’t be afraid to be adventurous,” says Steve. “We believe that children with disabilities should be given as much opportunity to try new activities as any other child, so be bold but be safe.”

of assessments for venues so that we know which work well and which to avoid. What some venues consider as accessible may not be: a flattish country park may say it’s fully accessible, but some wheelchairs are incredibly difficult to push on rough terrain.”

Building the right degree of challenge into a trip – particularly an adventure residential – is a nuanced decision for every child, but Kelly advises teachers are led by the pupils’ ambitions. “A number of parents come

to us distressed that their child hasn’t been allowed to go on a trip,” she says. “Mainstream schools may make that decision a bit too quickly because they don’t have the knowledge or experience, but they have to be incredibly careful of discrimination. ‘We don’t have enough staff’ is excluding SEND students, and is discriminatory. Start by asking, ‘Do you want to come?’ And if it’s a ‘yes’ then brilliant. You can start to look at what alternative provision will be fun and inclusive.”





# AFFORDABLE ACCOMMODATION IN CENTRAL LONDON

Nestled in the heart of South Kensington, Imperial's summer accommodation provides more than 1,000 guest bedrooms suitable for educational groups.

With a choice of room options and the ability to book classrooms and catering on site, we're the perfect choice for your next school trip.

Available from July to September 2023.

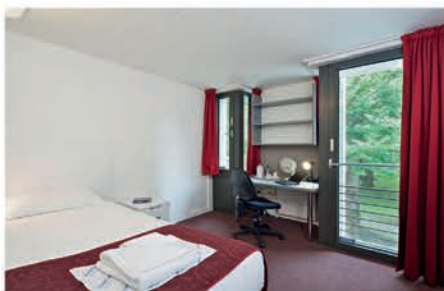
**Enquire now**

T: +44 (0)20 7594 9511

E: [groupaccommodation@imperial.ac.uk](mailto:groupaccommodation@imperial.ac.uk)  
[imperial.ac.uk/summeraccommodation](https://imperial.ac.uk/summeraccommodation)

*"The central London location, combined with the bookable classroom space and larger lecture theatres, make Imperial College the perfect location to host the annual Global Summer School."*

**Claire Arnup**, Program Manager,  
Imperial Global Summer School



**Imperial College  
London**



6 THINGS TO DO IN...

# South Kensington

Rich culture, together with Imperial College's modern learning spaces and accommodation, make this the perfect destination

**GOOD TO KNOW**

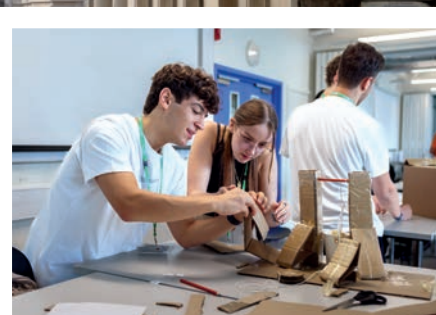
Opening its student halls of residence from July to September, Imperial College offers groups of all sizes affordable accommodation in great London locations.

## 1 Get cultural at three major museums

Marvel at the world's largest museum of applied arts, decorative arts and design, the Victoria and Albert Museum (V&A). Travel back through 4.6 billion years of our planet's history at the Natural History Museum. Discover the science behind the technology that shapes our everyday lives and explore the history and future of scientific innovation at the Science Museum.

## 2 Discover on-campus teaching

As one of the largest academic venues in London, Imperial Venues has a great selection of over 100 modern, flexible spaces to suit every need. It also provides a range of four-star accommodation options available each summer that boast modern comforts. Conveniently located next to some of London's top attractions, with the Underground less than a 10-minute walk away, it's the ideal venue for your next school trip.



## 3 Take in a performance

Located only a few steps away from Imperial Venues, the Royal Albert Hall is the perfect place for pupils to immerse themselves in a show. Host to the annual BBC Proms concerts, as well as classical concerts, ballets, opera, and gigs, the Royal Albert Hall has something for everyone.

## 4 Wander the parks

Soak up the fresh air and get your steps in with a stroll through Hyde Park. Covering 350 acres, Hyde Park has an abundance of green space and a large lake open to boat hire in the summertime. Alternatively, admire the views of the beautifully landscaped Kensington Gardens, being sure to take a gander at the artwork held at the world-famous Serpentine Galleries, hosting both contemporary and modern art exhibitions.

## 5 Explore the history of music

Another impressive building of South Kensington is home to the Royal College of Music Museum, perfect for music lovers. The museum is an interactive space, holding regular performances by Royal College of Music musicians, and houses a rich collection of historical musical artefacts, such as the earliest known guitar and stringed keyboard instrument.

## 6 Get some retail therapy

After an eventful day spent in South Kensington, why not check out Kensington High Street and go souvenir shopping at the iconic Harrods? A department store like no other, Harrods is the perfect window-shopping spot. With its treasures spanning over eight floors and including over 3,000 brands, it's hard to run out of things to browse.



# PEAK

EDUCATION THROUGH ADVENTURE



## CAN YOU REACH YOUR PEAK?

School Trips Available All Year Round - Enquire Today

T 01782 722226

[www.peak.co.uk](http://www.peak.co.uk)





## WE LOVE TO LEARN

# Hitting the heights!

Let Peak guide your group to next-level learning in the great outdoors

Peak prides itself on offering school trips with a difference. Throughout seven activity centres, its dynamic programme of activities is centred on one core principle: delivering education through adventure. From sailing to climbing, bushcraft to fire lighting, and team-building to survival skills, there are so many activities that will enchant young minds. Peak can apply educational

subjects, such as maths and geography, to the activities it offers, showing pupils real examples of how lessons are used in everyday life. It takes pride in its ability to tailor school trips to your unique needs, from small to large groups, day trips to residential stays. Its team will work with you to plan a perfect trip that meets all your requirements.

## CURRICULUM LINKS



### BIOLOGY

Peak offers curriculum-based biology sessions from KS2 to A-level. Pupils can learn about microhabitats and ecosystems, or discover the importance of living microorganisms for their environment.



### GEOGRAPHY

Looking at water cycles, conservation and natural resources, Peak can offer curriculum-based activities around physical, human and environmental geography for groups from KS2 up to A-level.



### PE

Students can learn the importance of being outside and moving for mental health. Activities like SUPing, kayaking, climbing and many more will get the adrenaline pumping.

www.peak.co.uk E: welcome@peak.co.uk T: 01782 722226

## LEARNING JOURNEYS

### Residential trips

With so many activities on offer, why not turn your school trip into a residential stay? Peak's purpose-built accommodation at its Chasewater (Burntwood) and Underbank (Stocksbridge) sites helps young people gain a sense of independence and return home with so many tales of adventure. All meals are included, prepared by on-site chefs, and as a teacher, you'll have your own room situated right next to the pupils' dorm.

### Development programme

Do you have pupils who could benefit from extra support to help them thrive and meet their full potential? Peak's development programme supports and engages young people who may be experiencing challenges. It provides structured activities to help progression, offer challenges and inspiration, and act as a tool for breaking down barriers – establishing boundaries and opening up communication. Courses can vary from six weeks up to a full academic year.

### Extra-curricular qualifications

Peak proudly offers accredited qualifications in many of its activities, and these can be a fantastic goal for young people to work towards, broadening their skillset and catalogue of achievements. Qualifications can be gained in many different activities, including but not limited to RYA sailing, British Canoeing Paddle Awards, NNAS navigation and Archery GB. The Peak team works with pupils at their own pace to help them achieve.





# Don't forget your TOOTHBRUSH!

The whole wide world awaits... Chris Stacey shares 10 things you should know before going abroad

**T**he last few years have been... interesting for those of us working within the school travel industry, thanks in no small part to Brexit, followed swiftly by the Covid-19 pandemic. But as we come out the other side of Covid, schools have been quick to return to travelling abroad, to make up for the incredible educational experiences students missed out on during the pandemic. There are some lasting changes to travel, but nothing that should put you off your next trip. With a little forward planning, you can look forward to a smooth school trip experience. So, let's take you through what you need to know before your next excursion...

## 1 Things have changed at the borders

If you haven't been abroad since Brexit, you'll notice differences at EU borders. On arrival, you'll need to join the 'third-country' or 'non-EU' line, which moves noticeably slower than the EU citizens' queue. Brits are now subject to more checks on arrival in the EU, so border guards will need to look at your passport to make sure you haven't overstayed your visa-free allowance in the EU already. They may also want to check you have a return ticket, accommodation and enough money to support yourself while there. These checks

have slowed down the process a bit, so specialist school tour operators like Halsbury build enough time into itineraries so planned activities aren't missed.

## 2 You shouldn't need a visa to enter the EU...

British citizens can stay in the EU for up to 90 days within a 180-day window without requiring a visa, which should be more than sufficient for your school trip. Later this year the EU is planning to introduce a new visa waiver scheme called ETIAS; you'll be able to apply online and it's expected to cost just €7 for three years of cover. If you have any non-British citizens in your group, they'll need to check with their consulate to see if they need a visa. It's recommended they start this process as soon as they know they're intending to join the trip, although they'll usually need to

check the Home Office has the most up-to-date travel document linked to their right-to-remain status, to avoid any issues when coming back into the UK.

## 3...but you need to make sure your passport is stamped

You'll now need to have your passport stamped on entry and exit from the EU. Border guards will check this to make sure you haven't overstayed your visa-free limit, so it's definitely recommended that you double check it's stamped each time you pass through the border so that there aren't any complications next time!

## 4 You can't take packed lunches into the EU

Back in the day, we'd recommend groups visiting Europe by coach take a packed lunch, making

longer permitted to take goods containing meat or milk, so you need to eat or bin that ham and cheese sandwich before you cross the border.

## 5 There are new rules on passport validity

Now, these are catching a few people out; we've even had group leaders realise their passports aren't valid for trips to EU countries just before they're due to travel. Please do check this as early as possible, as arranging a new passport isn't always quick. So, what do you need to know? Firstly, your passport must be less than 10 years old on the date you enter the EU country. It must then be valid

*"We've even had group leaders realise their passports aren't valid for trips to EU countries just before they're due to travel!"*

wait until everything is booked and confirmed before they can apply for the visa. If you have any EU citizens in your group by the way, they should

sure that the seemingly permanently hungry kids don't starve on the way to your destination. However, another consequence of Brexit is that Brits are no





for at least three months after the day you plan to leave. They're the rules. But we would suggest that it'd be worth ensuring you have at least six months left on your passport, as this seems to be the preference of some border guards and could make your trip that bit smoother.

## 6 You need to get a GHIC

If you don't currently have a valid European health insurance card (EHIC), you need to get yourself the new global version – the GHIC. The great news is that this is

available for free from the NHS website, so you can access healthcare at the same rate as locals while on your trip. We wouldn't travel without it and every single member of your group should ensure that they've arranged this prior to travel.

## 7 And suitable travel insurance is essential

The GHIC will ensure you pay the rate locals would if you require healthcare in an EU country, but this may still involve some cost, so it's really important you take out adequate travel insurance to cover this. Your school may already have this in place, but if not, your school tour operator should be able to arrange everything for you.

## 8 You should also check roaming costs

Brexit also meant the end of guaranteed

free mobile roaming when visiting the EU, Norway and Iceland, so you should definitely check with your network regarding data charges. Many networks offer packages that allow you to use your data as

though you were in the UK while abroad for a small fee. Having said that, your network is now required by law to check whether you wish to continue spending on roaming charges once you hit £45, so we won't be seeing a return to the days of astronomical phone bills after trips abroad!

## 9 EU destinations are still popular with schools...

Yes, there have been a few changes to school trips to the EU since Brexit, but with a little forward

## YOUR INTERNATIONAL CHECKLIST

Before you travel, make sure everyone in your group has...

- A valid passport
- An EHIC or GHIC
- Appropriate travel insurance
- Noted roaming charges with their network
- Found out if they need a visa (non-UK citizens only)
- Checked their right to remain status is tied to their most up-to-date travel document (EU citizens only)
- Not brought a packed lunch containing dairy or meat products!

planning and the support of a specialist school tour operator, they are certainly nothing that you need to worry about. School trips to the EU are just as popular as ever and still offer so many unforgettable experiences for you and your students to enjoy!

## 10...but it's OK to be more ambitious

Perhaps you'd like to go a bit further afield but you're worried that with the cost of living crisis, families won't be able to afford a long-haul school trip? Well, don't forget that fundraising for a school trip can be an important part of the experience, giving students the opportunity to develop their independence and responsibility, while also giving them more ownership over the school trip experience.



*Chris Stacey is head of sales at Halsbury Travel, a specialist*

*school tour operator founded in 1986 by a former teacher.*

[www.halsbury.com](http://www.halsbury.com)



# English Heritage

Looking for a memorable history trip for your GCSE class? These five great options will bring learning to life...

## 1 Kenilworth Castle, Warwickshire

Kenilworth Castle has been a major military stronghold, a royal palace and an inspiration to writers and artists for 900 years. Give your students deeper knowledge of Kenilworth on one of English Heritage's GCSE tours, and use the free GCSE guide to support a study of the historic environment.

## 2 Stonehenge, Wiltshire

Study this iconic monument, including the early significance of the landscape to the first builders of Stonehenge and the three phases of its construction. Explore the changing beliefs surrounding the site as a sacred place, and how different people used Stonehenge throughout history.

## 3 Dover Castle, Kent

Guarding the shortest crossing between England and Europe, Dover Castle became known as the 'Key to England' for its crucial defence of the coastline for 2,000 years. Its rich history makes Dover ideal for studying changing attitudes towards defence and the evolving psychology of war.

## 4 Battle Abbey and battlefield, East Sussex

Re-enact a decisive moment in the Norman conquest of England with an interactive, expert-led walking tour of the battlefield and wider site.

### ENQUIRE NOW!

Get free entry to over 400 properties when you book in advance, or take part in curriculum-aligned GCSE workshops supporting both OCR and AQA.

Explore events leading up to the Battle of Hastings and discover how the Normans established control after their victory.

## 5 Carlisle Castle, Cumbria

Dominating the landscape around it for 900 years, the castle was the focus of territorial wars between the monarchs of Scotland and England throughout much of medieval history. It remained in military use until 1959, so makes an ideal study of siege warfare and the changing use of castles in England.



[www.english-heritage.org.uk/schools](http://www.english-heritage.org.uk/schools) E: [bookeducation@english-heritage.org.uk](mailto:bookeducation@english-heritage.org.uk)

**ENGLISH HERITAGE  
EDUCATION**

**MAKE AN IMPACT  
WITH OUTDOOR  
LEARNING**

Bring history to life and  
inspire your pupils.

*Step into England's story*

Take your classroom outside and stand in the places where history happened. From the Stone Age to the Cold War, discover over 400 historic sites that cover a range of time periods, themes and key stages 3-5.

Book a **FREE** self-led visit or a hands-on expert-led Discovery Visit for just £100 per class per session.

### ENQUIRE NOW:

☎ 0370 333 1181

✉ [bookeducation@english-heritage.org.uk](mailto:bookeducation@english-heritage.org.uk)

🖱 [english-heritage.org.uk/learn/school-visits](http://english-heritage.org.uk/learn/school-visits)

The English Heritage Trust is a charity, no. 1140351, and a company, no. 07447221, registered in England.

CH7684\_12/22





## ASK THE EXPERT

# Not all classrooms have walls

Sarah Wood from Forestry England discusses the importance of learning outdoors and how to get started

## 1 Build those connections

Getting young people outdoors, building their connections to nature and helping to develop their love for the natural environment will not only help them become more well-rounded adults, but also boost their engagement levels and encourage more active forms of learning. Nor are the benefits just confined to students – teachers engaging with outdoor learning say it's increased their job satisfaction, impacted positively on their health and helped improve their relationships with students.

## GOOD TO KNOW

There's a wealth of existing resources out there ready for you to adapt. We can share best practice and help to co-create new forest education resources. Use our support to plan a visit to a suitable local woodland setting.

## 2 Ride the feel-good factor

Research shows that spending time in forests can improve our health and wellbeing – and that's even before you provide your students with real-life, hands-on experiences. Even if you can't access your local forest or green spaces, trees are all around us and can be a base for turning classroom theories and scientific enquiries into live experiments and avenues of exploration.

## 3 Phase it in gradually

We know that time constraints and a lack of flexibility can limit the amount of outdoor learning you can do. We suggest starting small and first familiarising

yourselves with your spaces. Start with a 15-minute activity and build up from there. Take a classroom activity you're confident in delivering and adapt it for outdoor use, or take those noisy debates and role plays outside.

## 4 Get trained

There are many training options that can help you become more confident at taking learning outside the classroom, ranging from short online or face-to-face beginner CPD sessions, to courses on specific skills, such as the use of hand tools. Once you're confident enough to venture further afield, you can seek accreditation, such as the Level 2 Outdoor Learning Practitioner and Forest School Leader courses.



[www.forestryengland.uk/learning](http://www.forestryengland.uk/learning) E: [learning.England@forestryengland.uk](mailto:learning.England@forestryengland.uk)

## SWAP SITTING STILL FOR LETTING THEIR IMAGINATIONS RUN WILD



from  
**26% off**  
10+ persons

Discover **GWR**  
**Group Travel**  
by train at  
**GWR.com/Group**



GROUP SEATING ON  
SELECT SERVICES  
DEDICATED BOOKING  
TEAM

**GWR** | Great  
Western  
Railway

ADVENTURES START HERE





# FOR THE THRILL OF LEARNING



023 8081 4442  
[education@paultons.co.uk](mailto:education@paultons.co.uk)



@paultonseducate  
[paultonspark.co.uk/education](http://paultonspark.co.uk/education)



## 6 THINGS TO DO AT...



# Paultons Park

With over 70 rides and attractions, beautiful gardens, and a host of birds and animals, there is plenty to keep any class entertained. . .

## DID YOU KNOW...

Paultons Park operates a 'no visit, no charge' policy and invoices after the trip takes place!

### 1 Head into Tornado Springs

Set in a 1950s American town, Tornado Springs boasts eight exciting rides and attractions. The Storm Chaser rollercoaster is sure to have your class in a spin, while the exhilarating Cyclonator will challenge even the bravest pupils. Grab your driving licence at Al's Auto Academy or tame the wild rivers on Buffalo Falls. There's something for everyone in Tornado Springs!



### 2 Book a workshop in the Learning Lab

Enjoy a curriculum-based workshop in the UK's most unique classroom! Paultons Park's Learning Lab is fully themed, with bubbling test tubes and smoking pipes, and is sure to engage every pupil. Workshop highlights include Rollercoaster Forces, where children learn all about the forces on rides and conduct experiments using the park's K'Nex coasters. In Ride Programming, children take on the role of engineers to programme mini Sky Swinger rides.

### 3 Walk with dinosaurs!

Step into a Jurassic world where dinosaurs of all shapes and sizes greet you at every turn. Lost Kingdom is home to three rollercoasters, including the mighty Flight of the Pterosaur, where riders get a bird's-eye view of the land as they swoop over the kingdom. Take a jeep tour of the park's dinosaurs or even come face to face with a T-rex in the meet-and-eat show.

### 4 Venture into Wild Lands

Step into Wild Lands and discover a host of birds and animals, set within Paultons Park's own African village. Enjoy the stunning walk-through aviary and get closer than ever to a range of unique birds. In the nocturnal house, pupils can see fennec foxes, sugar gliders, and tiny pygmy mice up close. Outside, children can meet the cheeky meerkats and stunning porcupines, as well as many other mammals.



### 5 Picnic in beautiful surroundings

Lunch is a key part of any visit! The park boasts several undercover seating areas for hungry pupils. The main seating area can house 450 people. On colder days, heat lamps are available, and the area is conveniently located next to toilets and a free water bottle refill station. If the weather is nice, there is nothing better than eating under the cedar trees within the park's beautiful gardens.

### 6 Enjoy the variety

Whether you are finding out about penguins at the daily keeper talk and feed or dropping 25 metres on the thrilling Magma ride, there is so much variety for school groups. Paultons Park has a range of options, whether it's for a learning trip, a reward trip, or a mixture of the two. Teachers will also enjoy the complimentary adult ratios, free pre-visits, zero deposit, and the park's 'no visit, no charge' guarantee.





## A vibrant collage for the Cadbury World Experience. It features a girl in a feathered headdress, a boy with a drum set, a girl with a hot air balloon, and various Cadbury products like Dairy Milk, Wispa, and a chocolate-making machine. The background is a mix of purple and brown with abstract shapes.







## LEARNING JOURNEYS

### Session 1 – The Maya talk

Pupils will be introduced to the great city of Chichen Itza and discover the Mayan myths and legends about how humans were created. They will also see real-life cocoa pods filled with the cocoa beans that were so valuable to the Maya around AD 900, as well as the wooden whisk they used to make their favourite chocolate drink, xocolatl.

### Session 2 – NEW Creative Language Workshop

Pupils will utilise their knowledge of language to create a persuasive advertisement for a product of their own design. They will look at past adverts and discover ways to describe and persuade viewers to desire their product. They will work in teams to create the most engaging tagline and use descriptive verbs and adjectives to convince the rest of their class their product is the best.

### Session 3 – Design and Technology Workshop

Pupils will discover the fascinating process by which Cadbury develops new chocolate bars and learn how both wrappers and advertisements are linked to the design of each bar. They'll also take a closer look at Cadbury's packaging and how it's evolved over the past 100 years, work in small groups to design their own wrapper, and see real-life chocolate moulds used in the Cadbury factory at Bournville.

## WE LOVE TO LEARN

# It's choc-full of discovery!

Explore history, design and much more with a day out at Cadbury World

With over 32 years' experience and more than 2,000 school groups attending each year, Cadbury World offers unique educational trips that provide a fascinating insight into the nation's favourite chocolate brand. There's an assortment of interactive chocolatey zones to explore and a variety of informative curriculum-linked talks and workshops, including Bean to Bar, the Maya, and Design and Technology.

The one-hour talks and workshops complement your group's day out perfectly, expanding pupils' knowledge on a range of topics. Self-guided tours are also available, currently priced from just £9.20 per pupil, with one adult admitted free for every eight children. All of this makes Cadbury World the perfect day out for schools. To find out more and to book, visit the website quoted below.

## CURRICULUM LINKS



### HISTORY

In Bull Street, the Cadbury Story and the Bournville Experience zones, uncover the philanthropy of the Cadbury family, and how their beliefs created a holistic approach to industry.



### GEOGRAPHY

Explore the Aztec jungle and uncover the journey of the cocoa bean all the way from South America to Europe and into the heart of Victorian England.



### D&T

Throughout the tour, discover how the manufacture of chocolate has changed since Cadbury made its first bar, and how chocolatiers made chocolate by hand in the past.

[www.cadburyworld.co.uk](http://www.cadburyworld.co.uk)





A  
JANE AUSTEN'S  
HOUSE

## TRANSPORT YOUR STUDENTS TO JANE AUSTEN'S WORLD



**DISCOUNTS  
AVAILABLE  
FOR STATE  
SCHOOLS**

Chawton, Hampshire  
[www.janeaustens.house](http://www.janeaustens.house)



**WORKSHOPS,  
TOURS AND  
VIRTUAL  
SESSIONS  
AVAILABLE**

**DCRS**



By Appointment to  
Her Majesty The Queen  
Supplier of Two-Way Radio  
Communications and Paging Systems  
Direct Communications Radio Services Ltd  
St Ives

**HIRE, SALES AND SERVICE OF VOICE AND DATA RADIO COMMUNICATION SYSTEMS,  
BODYCAMS AND APPLICATIONS.**



### PROTECT YOUR STAFF AND PUPILS WITH TWO-WAY RADIOS AND COMMUNICATION SYSTEMS

#### What Benefits Do Two-Way Radios Deliver?

- ▶ Increased staff safety & security
- ▶ Easy to use
- ▶ Remote control of activities
- ▶ No call charges
- ▶ Clear audio even in noisy environments
- ▶ Remote campus connectivity (connect to other sites)
- ▶ Emergency & lone worker functions
- ▶ Connecting into BMS, fire alarms & security systems
- ▶ Licensed & license-free equipment available
- ▶ New digital interference license free radios
- ▶ Lockdown - alert all staff over many communication methods at the touch of a button



**Call FREE: 0800 043 2688**

**email: [sales@dcrs.co.uk](mailto:sales@dcrs.co.uk)**

**[www.dcrs.co.uk](http://www.dcrs.co.uk)**



**ed edwindoran**  
*sports tours*

**THE LEADING SCHOOL SPORTS TOUR OPERATOR SINCE 1974**

Discover your team's full potential and create memories to last a lifetime with the UK's longest-running school sports tour operator.

With our experience and global network of partners, our guarantee for you is a competitive tour with well-matched fixtures and enriching activities in any destination you pick.

Visit [www.edwindoran.com](http://www.edwindoran.com) to learn more about us.

**TAILORMADE ITINERARIES COMPETITIVE FIXTURES**  
**OVER 15,000 TOURS DELIVERED**



**GET A QUOTE FOR YOUR GROUP'S NEXT SPORTING ADVENTURE**

**VISIT [EDWINDORAN.COM](http://EDWINDORAN.COM) CALL US: 020 3617 7983**



**Experience  
Education**  
Student Travel Group

Edwin Doran is part of the Experience Education family, enriching lives through experiential travel.

**SkiBound** **travelbound**

**edwindoran**

**masterclass**

**World Challenge**

**JCA**





# All children deserve BREAKTHROUGH MOMENTS

Amid financial uncertainty, parents and schools may well withdraw from offering students memorable outdoor experiences – but as **Anthony Jones** explains, it doesn't have to be this way...

**S**elf-esteem is a vital step towards achieving potential. It's the bridge between the essential and the possible – what every child needs to thrive.

However, I'm conscious that the cost-of-living crisis is impacting schools hugely, and that the definition of 'needs' is in danger of reverting back to the basic requirements for learning. Yet my concern is that enrichment opportunities are being deprioritised, causing young people to miss out in what's a challenging period.

## Outdoor education

Self-esteem is built in every classroom every day, of course – but there are some things that can't be taught within those walls, which often prove to be those experiences that will stay with children forever.

One man who understood this was Peter Gordon Lawrence. After leaving college in 1955, he embarked on a canoeing holiday down the River Danube. The experience was transformative, prompting him two years later to set up a company arranging trips for young adults down the UK's River Wye.

By the time of Peter's passing in 2004, that

company, PGL, had grown to provide similar opportunities for children across the country, enabling several generations to benefit from their initial experiences of overcoming challenges in the great outdoors and staying away from home for the first time.

Every week, I witness children discovering their self-esteem at PGL centres across the UK and France – be it overcoming their fears on a high rope, building a raft that floats or conquering the Jacob's ladder with their classmates.

## Listening to teachers and parents

Bonds forged outdoors empower children with the self-belief needed to tackle academic challenges at school. Peter believed, as I do, that *every* child and young person should get to benefit from such experiences – not just those whose parents can afford the cost of the trip.

Three years on from the global pandemic denying many schoolchildren

such wonderful opportunities, however, the cost-of-living crisis is now deepening the social divide between children whose families can afford enrichment experiences and those who can't. This is something we have to address.

Research we conducted with teachers in February this year revealed that those schools with the highest levels of Pupil Premium were spending more of their funding on meal provision and other essentials, making them less able to provide opportunities for outdoor learning.

"These trips are vital for social, emotional and character-building, and gaining independence for our pupils," one teacher told us, "yet finance is a huge barrier to providing amazing experiences."

Around the same time, we at PGL undertook a review of our curriculum in light of recently issued Ofsted guidance on character building and in the wake of the pandemic. What became very clear to us, based on our conversations with teachers and parents, was that the opportunities we provide remain valuable to all children and young people at every stage of their education.

## Designed for life

This research resulted in the launch of two initiatives. The first is PGL's new education framework, R.E.A.C.H., which is structured to deliver different learning outcomes at each stage of a child's development, through to Y11. While children in

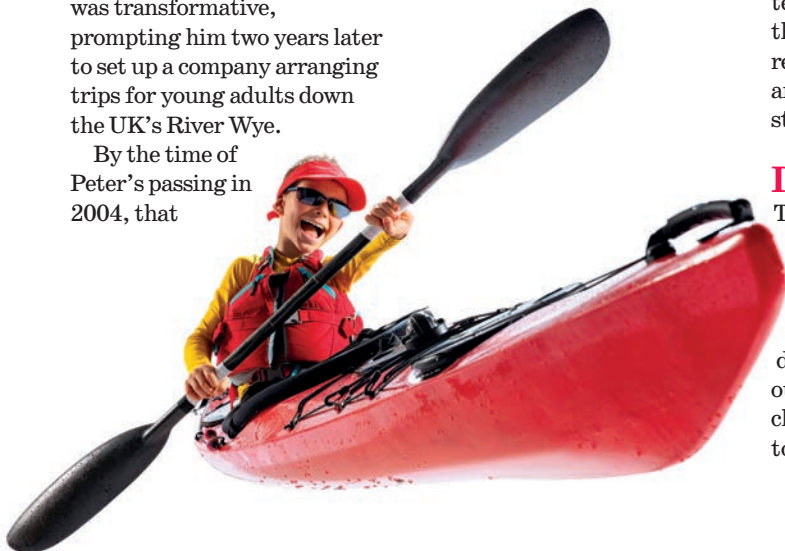
primary school can benefit from trying new experiences and bonding as a group, activities for secondary school pupils should be geared towards the development of more complex communication skills and the building of confidence, wellbeing and resilience.

Put simply, we recognise that needs differ from age group to age group, and even between different stages throughout the academic year. Our programmes are led by the outcomes teachers tell us that they need for their pupils.

The second initiative is The Breakthrough Fund, designed to give more schoolchildren across the UK the chance to experience those breakthrough moments on residential outdoor learning trips, irrespective of their financial situation.

Different forms of funding support can be offered, depending on the level of need. For schools with high levels of need, 50% of the total trip cost will be funded by PGL. Where there's less overall need for financial support across the student population, we'll provide a range of funding options to ensure that those children who do require support can experience the same opportunities as their classmates. For schools with the highest levels of need, we're even offering a number of fully funded trips each year! To find out more and register your interest, visit [pgl.co.uk](http://pgl.co.uk).

**Anthony Jones is the CEO of PGL**





# “What are you WAITING FOR?!”

High-quality learning experiences for students are within every school’s reach. Here’s how to make it work, says **Matilda Miles**

**A**s the days get longer and warmer, there’s a feeling of renewed hope in the air. Spring is upon us, yet schools continue to face mounting pressures and big challenges. With ever-tightening budgets and stretched resources, it can feel like playing a game of catch-up, with ‘non-priority’ activities such as learning outside the classroom (LOtC) being put on hold. Yet LOtC shouldn’t be an add-on that only happens once in a while on a big

new concept. Compared with a full outing, this approach lowers costs, lowers risk, uses staff time efficiently, is more sustainable, and is easily adaptable to students’ ability, subject and learning objectives. But there’s more...

## **Explore your local area**

No matter whether your school is based in an urban or rural environment, there will be a huge range of learning opportunities on your doorstep. From a short walk to the local

relish learning in different yet familiar places, and doing so will help them develop connections with their local community.

Travelling by public transport is also a fantastic learning opportunity – something that enhances confidence and provides invaluable life experience. It can develop skills such as money and time management, understanding how and

where to buy tickets, how to use public transport safely, and appropriate behaviour and respect for operators and other passengers.

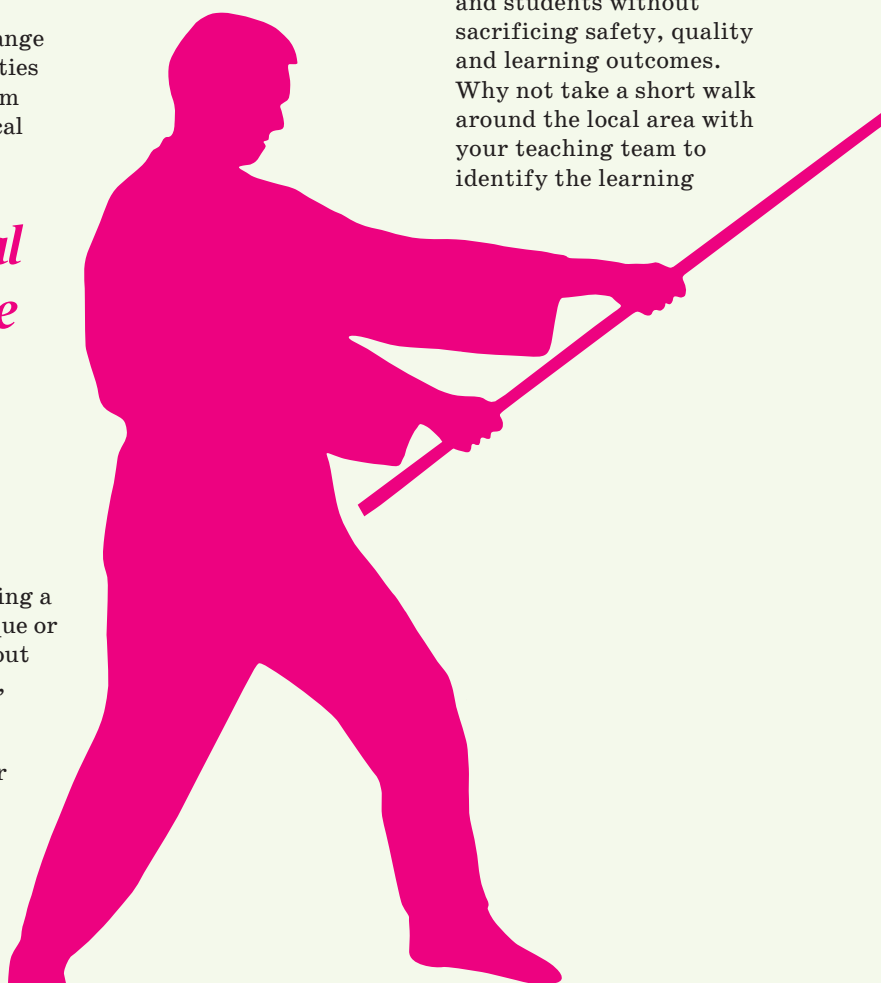
## **Rethink your MO**

What about safety and learning outcomes? With some creative thinking and planning ahead, educational visits and experiences can be accessible for all schools and students without sacrificing safety, quality and learning outcomes. Why not take a short walk around the local area with your teaching team to identify the learning

*“Whether your school is based in an urban or rural environment, there will be a huge range of learning opportunities on your doorstep”*

off-site school visit; it should be woven into the school curriculum and daily teaching practice to have maximum impact. Start with the question, ‘Is the classroom the best place to teach this lesson?’ LOtC might be as simple as taking your students outside into the school grounds and using the environment to explain a

shops or park, arranging a visit to the local mosque or church to find out about religious celebrations, taking the bus to the town’s art gallery, museum or theatre, or inviting parents or local businesses into school to talk to your students about their profession or trade, students will





opportunities? What are the natural spaces, businesses, attractions and community groups you could connect with? What areas of the curriculum could they support? Planning ahead and considering potential risks are key to a successful outing and including the students in this process can benefit everyone, especially children with SEND; by talking them through any plans beforehand, they will feel more prepared and engaged.

“Prior to 2020, our school had 500 students taking part in residential courses,” says Jon Clarke, the shadow headteacher at Walsall Academy in the West Midlands. “Because of the Covid-19 pandemic we went from that down to zero in a day! We soon realised that the local area also had so much to offer and vital core learning could still be achieved. So, we pushed the reset button

and came out stronger because of it.”

## Look for the badge

If you think your students would benefit by visiting a particular venue or organisation, plan ahead and look for the LOTC Quality Badge. This is the only national accreditation that recognises LOTC providers offering high-quality learning experiences as well as effective risk management, and is endorsed by the Department for Education. By visiting an organisation or venue that holds the LOTC Quality Badge, you can also reduce your paperwork, as you don't need to carry out your own risk or quality assessments regarding the activities provided. It makes sign-off for your visit quicker and simpler, and with a variety of badge holders across the country you may be surprised at the range of providers who offer low-cost or free activities in your local area.

Organisations such as Canal & River Trust, Ernest Cook Trust and the Youth hostel Association provide different levels of free support to schools, particularly to those in deprived areas. All of the Science Museum Group sites hold the LOTC Quality Badge, and there are many local galleries

## WHY LOTC DESERVES TO TOP YOUR TO-DO LIST...

### THE RESEARCH IS IN

Two new reports from CLOtC and Natural England confirm LOTC in natural environments can deliver multiple positive health and learning benefits for students and staff. Specific outcomes include improved attendance rates, attainment and physical activity, as well as positive outcomes for mental health, including emotional wellbeing, self-esteem, and resilience.

### THE SOFT OUTCOMES ARE SIGNIFICANT

Schools that have already embedded LOTC into their routine teaching practice demonstrate it can have a positive social return on investment (SROI) as well. The forecast SROI for schools with embedded LOTC in natural environments as a whole-school approach is £4.32 for every pound that is invested, and this is likely to be an underestimate.

### ALL LOTC IS GOOD

The reports suggest LOTC has a positive impact whether it happens on school grounds, locally or further afield on an off-site visit. The reports find even the natural environments in or around homes and educational settings are associated with positive learning, behavioural, emotional, and health outcomes. You can read a full summary of the evidence reports on the CLOtC website.


and museums that do too. You can search for badge-holders by area or by type, quickly and easily on the LOTC Quality Badge website.

At the Council for Learning Outside the Classroom (CLOtC), we believe any place can be a learning space, and we work to support schools and organisations dedicated to ensuring more children and young people have opportunities for life-changing learning experiences beyond the classroom. Through our Learning Beyond programmes for schools – the LOTC mark and mentoring – we offer training and resources on using your school grounds and learning in your local area. With the

many positive benefits of LOTC now well-evidenced and tailored support from CLOtC for schools at all stages of developing their LOTC provision, there's more reason than ever to take your teaching beyond the classroom walls and bring learning experiences to life.



**Matilda Miles** is communications and marketing manager at the Council for Learning Outside the Classroom.

 [lotc.org.uk](http://lotc.org.uk)



# From 'Well done' to 'WHEEEEEEE...!'

Rewards systems should always be approached carefully, cautions **Daniel Harvey** – but there's no denying the thrill of a theme park trip for doing well in class...

**F**or the past few years, it's been my privilege to be the senior leader with responsibility for student behaviour and attitudes and to lead the pastoral team. An important aspect of this work has involved overseeing the rewards budget – but something about the term 'reward' has never sat right with me.

Should we, as teachers and leaders, really talk about 'rewarding' behaviour and reduce achievements to a transaction involving vouchers? Could a school instead focus on 'recognition', to allow for a more discerning, just-in-time process that lets students know their efforts are seen and valued?

## Rewards versus recognition

A *reward* is something you're given because you've done something good and/or worked hard. *Recognition* is public appreciation for an individual or group's efforts

or actions.

My own approach has been to ensure student success is valued and appreciated in a timely manner, adds to student motivation and builds positive student attitudes to school.

However, there are many students who demonstrate consistently great behaviour and attitudes to learning. What concerns me is that these students sometimes don't receive enough recognition from staff to indicate that we see their efforts and success, and don't take them for granted.

I'd argue that special events – particularly trips – shouldn't be the *main* means by which student achievements and successes are recognised. Rather, they should sit atop a firm foundation of frequent, more straightforward reward events. End-of-term 'treat trips' can sometimes take place too far out from when a student genuinely excelled. What we need are for all reward events to be both motivational and supportive of future behaviour.

## Mixing it up

Building a varied and effective reward repertoire over the school year will allow for more consistent recognition to take place. I know some heads of year who organise regular pizza parties for select groups of students – often involving lots of pizza, music and games during lessons.

A primary school where I'm vice-chair of governors runs an annual Christmas Movie cinema trip for all students, which definitely adds to the magic of the season. Prior agreements with the cinema regarding tickets, food and drink purchases and other issues help to ensure a smooth and enjoyable visit every time. Secondary schools could look at potentially turning their main theatre or hall into a temporary cinema and even order in treats at scale.

In summer months, a visit from an ice cream van could provide a 'short and sweet' reward event, but this may be better suited to smaller schools, given the logistical issues involved with numbers, size of queues, temperatures and so forth.

## Big trips

Drayton Manor is a theme park local to my school – and as any educator in the West Midlands will tell you, late July sees the park rammed with school students from around the region having a great time. Admittedly, the wait times for rides sometimes touch 90 minutes,

the teacher-filled coffee shop queues are often long, and staff can expect to field requests to supervise students on StormForce 10 – a ride guaranteed to leave everyone a soaking mess.

But in my experience, students do appreciate being chosen to go on such trips – especially if parents and carers know their selection was on the grounds of good behaviour and attitudes. I've previously used our reward budget to subsidise costs to parents, and with help from the school's business manager, identified innovative ways of reducing the accompanying transport costs to and from school.

Finally, pre-Covid, some of my colleagues came up with perhaps the best reward/recognition event of them all – our School Summer Festival. Chosen students from all years – again, based on buy-in to school values and expectations – were invited to an afternoon of music, magic, funfair activities and free ice cream. The event has proved to be a success both times it's been run, and I look forward to its return in 2024.



**Daniel Harvey** is a GCSE and A Level science teacher

and lead on behaviour, pastoral and school culture at an inner city academy





PW PRODUCTIONS PRESENTS

★★★★★ "A GIDDILY ENJOYABLE NEW PLAY THAT DESERVES TO BE PACKED TO THE RAFTERS"

THE GUARDIAN

# WONDER BOY

WRITTEN BY  
ROSS WILLIS

DIRECTED BY  
SALLY COOKSON



Supported using public funding by  
ARTS COUNCIL  
ENGLAND



UK TOUR NOW ON SALE  
LAUNCHES SEP 2024  
BOOK NOW AT [WONDERBOYPLAY.COM](http://WONDERBOYPLAY.COM)

The National Theatre's Landmark Production

J B PRIESTLEY'S  
CLASSIC THRILLER

# AN INSPECTOR CALLS

DIRECTED BY  
STEPHEN DALDRY

UK & IRELAND TOUR NOW ON SALE  
LAUNCHES AUG 2024

BOOK NOW AT [ANINSPECTORCALLS.COM](http://ANINSPECTORCALLS.COM)



SUSAN HILL'S

# THE WOMAN IN BLACK

ADAPTED BY  
STEPHEN MALLATRATT

FINAL TOUR DATES REMAINING

BOOK NOW AT [THEWOMANINBLACK.COM](http://THEWOMANINBLACK.COM)





# GO EVERY YEAR. **GROW** EVERY YEAR

From  
Y7 bonding to  
Y11 revision, your  
students will  
**grow every year**  
with PGL

## Revision Weekends

YEARS  
10-11  
& Sixth Form

Study & adventure combined

## Fieldwork trips

Specialist field-study adventures

KS3  
GCSE  
A Level

## Ski

YEARS  
7-11

Once-in-a-lifetime  
adventures

## Ardeche Adventure

YEARS  
7-11

Discovery & exploration

## Sports Weekends

YEARS  
7-11

Action-packed adventures

## French Culture & Language trips

YEARS  
7-11

Language-learning adventures

## UNITE!

YEARS  
7-9

Relationship-building  
adventures

## GROW!

YEARS  
7-9

Character-building  
adventures

ANYTHING BUT  
TEXTBOOK AT



SCHOOL ADVENTURES

0333 321 2106 [pgl.co.uk/quote](http://pgl.co.uk/quote) [schools@pgl.co.uk](mailto:schools@pgl.co.uk)

Scan me!

