



TOP.....! SCHOOL #5 TRIPS

INSIDE

PRESS PLAY

Stream theatre in
your classroom

LEAP OF FAITH

Adrenaline-filled ways
to grow confidence

REWARD TRIPS

Celebrate hard
work in style

OUTSIDE CHANCE

How open-air
learning helps
kids focus

BIG ADVENTURES

25 UNFORGETTABLE EXPERIENCES
FOR YOUR CLASS

teach
PRIMARY

BRING LEARNING TO LIFE

AT KNOWSLEY SAFARI



Whether you are a school teacher looking to bring your class for a fun, educational day out, wanting us to visit your school over a live stream or maybe you're a home educator searching for that something a little bit different, we've got something for everyone...


KNOWSLEY SAFARI

BOOK
NOW

Call 0151 430 9009 to book your session

Contents

5 25 BEST SCHOOL TRIPS

From inspiring days out to fire pupils' learning to horizon-broadening residentials, you'll find a school trip to suit your group here.

16 EMBRACING OUTDOOR ADVENTURE

Dr John Allan explains why learning in the natural world today helps children adapt to the challenges of tomorrow.

19 PAULTONS PARK

With over 70 rides and attractions, beautiful gardens, and a host of birds and animals, there is plenty to keep any class entertained.

21 KNOWSLEY SAFARI

Highlight the importance of conservation and connect your pupils with the wonders of the natural world.

23 INCREDIBLE CAMPING

Whether it's part of a three-day trip or a week-long adventure, a typical day at Kingswood is anything but ordinary.

25 NST SCHOOL TRIPS

Discover a world of learning beyond the classroom, both at home and abroad, with first-class support for your visit.

27 CONDOVER HALL

Pupils will embrace the out-of-the-norm learning opportunities at JCA's flagship activity centre in Shropshire.

29 AIRHOP UK

Get your pupils energised with a trip to one of these exciting trampoline and adventure parks.

31 CONWAY CENTRES

From getting hands-on with the Iron Age to conducting environmental investigations, you'll find a trip to support any topic.

33 GO BEYOND THE TEXTBOOK WITH PGL

Enable big thrills from new experiences with a PIONEER! adventure, specifically designed for your Year 3–4 (P4–5) pupils.

35 A CLASSROOM WITH NO WALLS

Reconnect with nature in a fun-filled forest adventure for every child.

37 IT'S CHOC-FULL OF DISCOVERY!

Explore history, design and much more with a day out at Cadbury World.



38 PORTHPEAN EDUCATION CENTRE

Overlooking the sea in Cornwall, this outdoor centre is the perfect place for your next school residential.

39 THE BEAR GRYLLS ADVENTURE

Give pupils a day of action they'll remember forever with challenges for every adventurer.

41 TIMOTAY PLAYSAPES

Allow pupils to really enjoy outdoor play and develop their physical, social, and cognitive skills with these natural playgrounds.



**teach
PRIMARY**

PUBLISHERS:

Joe Carter
Sam Reubin
Richard Stebbing

CONTRIBUTING EDITOR:

Jacob Stow

GROUP ADVERTISING MANAGER:

Samantha Law,
samantha.law@artichokehq.com
01206 505499

ADVERTISING MANAGER:

Salema Khan,
salema.khan@artichokehq.com
01206 414217

PROJECT MANAGER:

Ria Bentham,
ria.bentham@artichokehq.com,
01206 505928

SENIOR ACCOUNT MANAGER:

Demi Maynard,
demi.maynard@artichokehq.com
01206 505962

ACCOUNT MANAGER:

Kim Richards,
kim.richards@artichokehq.com
01206 505240

ART EDITORS:

Richard Allen & Sarah Barajas

ACCOUNTS:

artichokemedialtd@integral2.com

CUSTOMER SERVICES:

primary@artichokehq.com

PUBLISHED BY:

Artichoke Media Ltd.



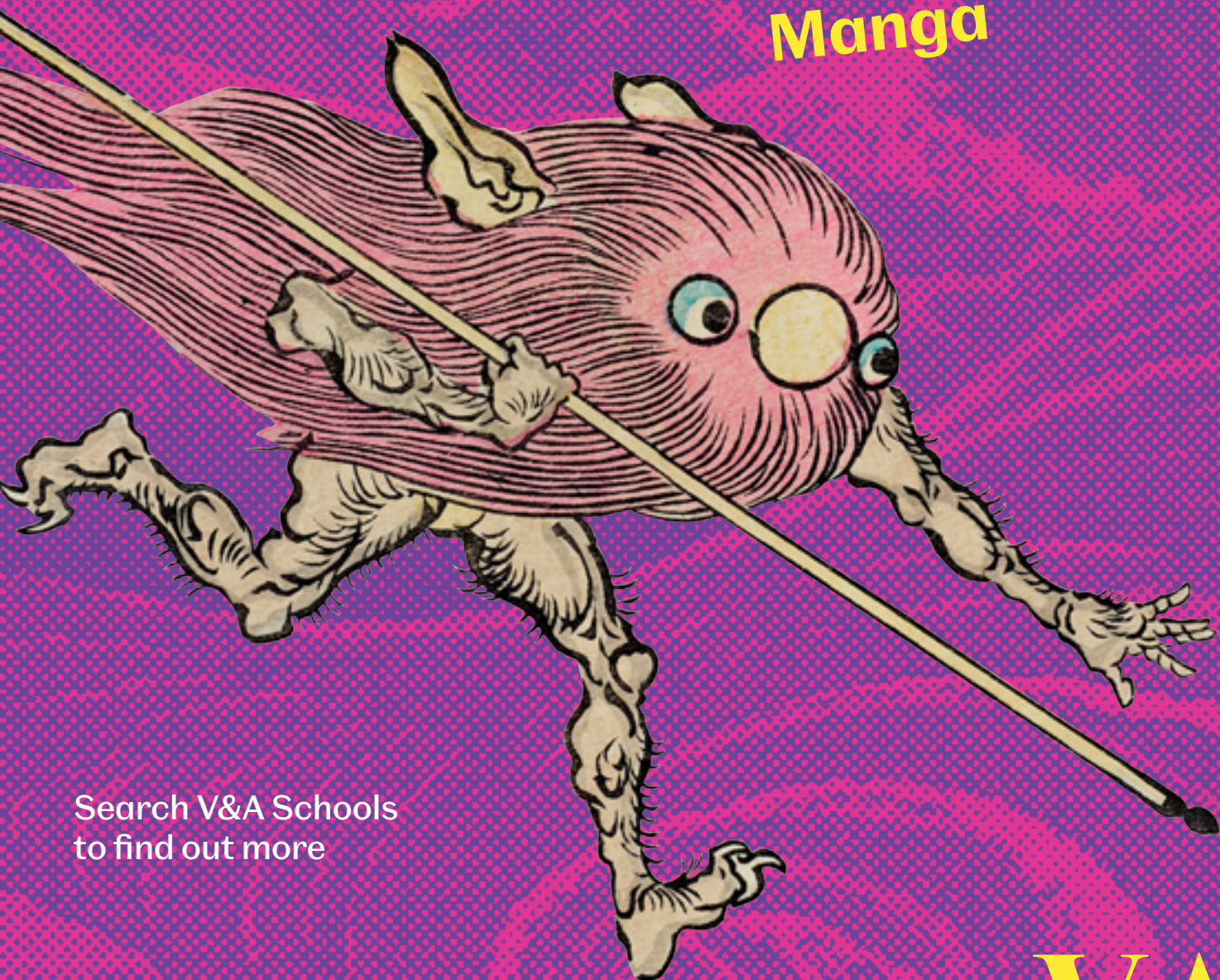
The views in this magazine are not necessarily those of the publisher. Every effort is made to ensure the veracity and integrity of the companies, persons, products and services mentioned in this publication, and the details given are believed to be accurate at the time of going to press. However, no responsibility or liability whatsoever can be accepted for any consequence or repercussion of responding to information or advice given or inferred. Copyright Artichoke Media Ltd.

Young V&A
Bethnal Green

Free for schools
Book now

Japan

Myths to
Manga



Search V&A Schools
to find out more

Supported by

TOSHIBA

V&A



25 BEST SCHOOL TRIPS

From inspiring days out to fire pupils' learning to horizon-broadening residentials, you'll find a school trip to suit your group here





DID YOU KNOW?

Formerly the Earth Centre, one of the Millennium Commission projects, Dearne Valley was transformed into a state-of-the-art sustainable activity centre in 2012.

Kingswood Dearne Valley

Kingswood's most environmentally sustainable site, Dearne Valley is a state-of-the-art activity centre, featuring one of Europe's largest solar panels and an onsite water treatment plant. It's an exceptional location to learn outside the classroom. Residential guests can choose between 4–16-bed dormitories, opt for the true camper experience in the Adventure Lodges, or enjoy luxurious eco-pod accommodation. The onsite activity park includes a challenging high ropes course featuring the popular Jacob's ladder and Leap of Faith, plus a climbing tower, zipline and more. There's also a purpose-built water sports lake and access to the River Don, so children can try their hand at canoeing, kayaking and raft-building.

Visit www.kingswood.co.uk or email sales@kingswood.co.uk



AirHop

With 17 locations around the UK, AirHop Trampoline and Adventure Parks are the perfect place for your next school trip. Three group packages are available, starting at £10pp, or a bespoke session can be created around your requirements. All include a selection of fun-packed activities, from free-range jumping and games through to guided learning designed to improve coordination and balance. AirHop's team of friendly and experienced staff, always including at least one qualified first-aider, are on hand to engage, enthuse and supervise, ensuring everyone has as much fun as possible.

Get in touch to find out how more – visit www.airhop.co.uk



Kingswood Peak Venture

Situated on the doorstep of the beautiful Peak District, with dramatic gritstone edges, wild heather moorlands and gentle limestone dales, Kingswood Peak Venture is an ideal day-trip location. The activity park is nestled in sheltered woodlands and fields, where pupils can take on the high ropes course, climbing tower, and exhilarating 3G Swing, to name but a few. On the nearby Scout Dike Reservoir, your group can put their team-building skills to the test in a raft-building challenge and learn canoeing from the centre's highly trained instructors. Onsite, you'll also find archery, aeroball, laser tag, fencing, Quidditch, and much more.

Visit www.kingswood.co.uk
or email sales@kingswood.co.uk

Celtic Harmony Camp

Experience Changes in Britain from Stone to Iron Age at Celtic Harmony Camp, the award-winning Outdoor Prehistory Centre located in beautiful Hertfordshire woodland, just a stone's throw from London. Pupils engage with the Prehistory topic through a range of themed day and residential trips, including Stone Age Neolithic Hunter Gatherers, Iron Age Farmers, Art in Prehistory and Boudicca Warriors. Each trip is packed with hands-on activities and led by costumed educators. Celtic Harmony have provided immersive Prehistory experiences to schools for 25 years and the charity was recently recognised as having the Best Education Team of the Year in the 2023 School Travel Awards.

Start your journey into Prehistory online today at www.celticharmony.org



Kingswood Isle of Wight

Kingswood's Isle of Wight centre covers 100 acres of fields and woodlands in a superb clifftop location overlooking Whitecliff Bay. It boasts direct beach access for surfing, SUPing, bodyboarding, swimming and rockpooling. Pupils can take on adrenaline-filled challenges on the high ropes, climbing tower, zipline, 3G Swing or Leap of Faith, or try a new skill like archery, shelter building or fencing. As the centre is located in a Site of Special Scientific Interest on the Jurassic Coast, a trip here is a fantastic way to boost your science or geography offering. Guests can stay in 4–16-bed dormitories or Adventure Lodge safari tents, which come complete with campfire areas.

Visit www.kingswood.co.uk
or email sales@kingswood.co.uk





Knowsley Safari

Connecting children with the natural world is at the heart of what Knowsley Safari has to offer. If you're looking for inspiration for your class, its team has something designed for your needs, with a range of educational activities available. Learn amazing facts, information, and stories about the animals as you enjoy a tour around the five-mile reserve with your very own guide, or book a Discovery workshop – either in a safari classroom or out and about on the foot safari – on one of a range of curriculum-linked topics.

Find out more at

www.knowsleysafariexperience.co.uk or contact the education team on 0151 430 9009.

NST

NST have over 55 years' experience creating inspirational school trips with immeasurable benefits. Their expert team will create a tailor-made experience to perfectly complement your learning objectives and budget, whilst also prioritising safety and ensuring all trips create lasting memories. NST provide a fantastic selection of primary school trips, with destinations including London, York, Edinburgh, and Northern France; each offering safe and secure accommodation for school groups. NST's engaging educational visits provide golden opportunities for pupils to bond with their peers outside of the classroom, expand their cultural capital, and foster confidence and independence. To find out more, call 0330 333 6090 or visit www.nstgroup.co.uk



Paultons Park

Award-winning Paultons Park is the ultimate venue for school visits, with over 70 exhilarating rides and attractions, all set in beautiful gardens, plus a fine selection of birds and animals. Whether your focus is learning, reward, or a mixture of both, the dedicated education team will be on hand every step of the way. Schools can supplement their visit with a workshop in the Learning Lab, where a range of topics are covered, including forces, programming, literacy and cross-curricular STEM. All workshops are linked to the park and rides. From planning visits to a 'pay after' facility, booking is simple.

For more information, email

Education@paultons.co.uk or visit

www.paultonspark.co.uk/tickets/school-trips



Winchester Science Centre

Book an educational visit to Winchester Science Centre, and your group can get hands-on with one of six 45-minute curriculum-linked workshops, be wowed by a bespoke planetarium show, and explore two floors of interactive exhibits. You can even save 10% on a second activity. To end the year with a bang, consider the centre's summer celebration, too. There'll be an explosive live show, a spectacular planetarium experience, and lots of interactive fun.

If you can't make it to Winchester, the team can bring the science 'wow' to you. Choose from three expert-led workshops, or, for something totally unique, turn your school into a space portal with the mobile planetarium!

Find out more at

www.winchestersciencecentre.org



Kingswood Staffordshire

Kingswood Staffordshire, the company's very first activity centre, is purpose-built and perfect for school visits. It's packed with adrenaline-filled activities like the challenging high ropes course, featuring camper favourites Leap of Faith and Jacob's ladder, as well as archery, laser tag, fencing, aeroball, Quidditch and much more. Overlooking the picturesque beauty of the Wrekin and Cleve Hills, the centre offers kids a chance to be immersed in nature while they explore, learn and grow. Kingswood's highly trained instructors can lead pupils through bushcraft basics like shelter building or orienteering, or through workshops on sustainability, woodlands and 'mini beasts'.

Visit www.kingswood.co.uk or email sales@kingswood.co.uk

WHATEVER THE WEATHER

Alongside its extensive outdoor offering, the centre has a flexible indoor space for all-weather activities, including problem-solving and team challenges.

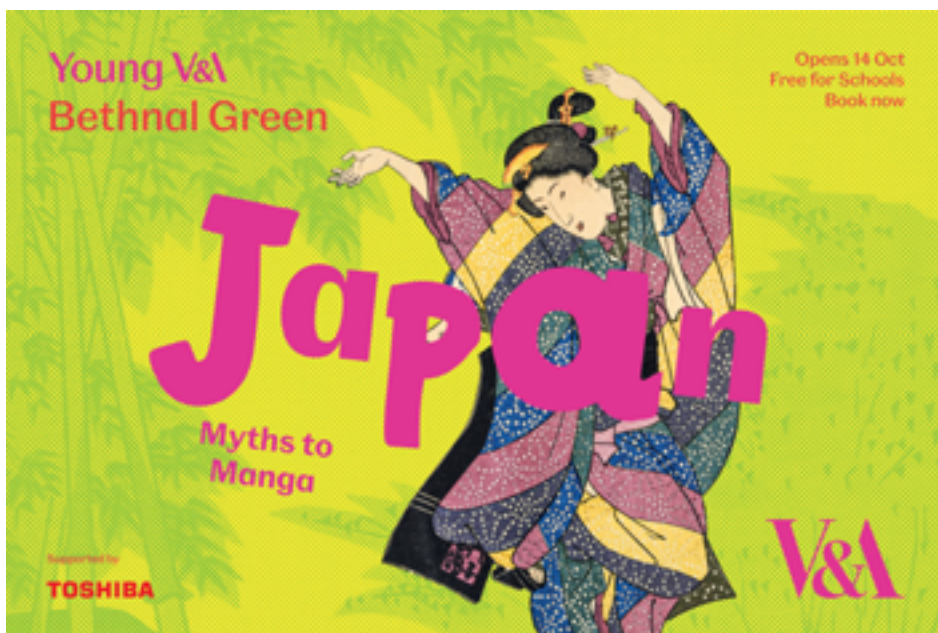


CREATIVE CLASSROOMS

The National Theatre's bespoke offering for primary schools includes 14 age-appropriate productions plus tailored resources to support creative learning.

The National Theatre Collection

The National Theatre Collection for primary schools brings world-class filmed plays into the classroom, accompanied by teaching resources to enrich creative learning. All children should have the opportunity to experience the magic of theatre, and the National Theatre Collection makes this possible while enhancing cross-curricular learning in subject areas like literacy, history, art and PHSE. Spectacular plays available to stream include adaptations of well-known children's stories like *Treasure Island* and *Peter Pan*, as well as Greek myths, Grimm Tales, and Shakespeare for younger ages. Access is free for UK state schools, so subscribe today at www.nationaltheatre.org.uk/ntcollection



Young V&A – Japan: Myths to Manga

Japan: Myths to Manga is Young V&A's first exhibition! Opened on 14th October 2023, it invites children to journey through the sky, sea, forest, and city and explore how design, folklore, and storytelling have influenced Japanese popular culture, technology and design. Key highlights include films from Studio Ghibli, a manga-inspired coat by Comme des Garçons, and historic and contemporary examples of manga. Schools can book for free from October.

Find out more at www.vam.ac.uk/exhibitions/japan-myths-to-manga

Lymley Wood – East Sussex

Taking pupils with ASC/ADHD on a school residential is a wonderful opportunity for children. Physical activity, outdoor experiences, camping, and activity sessions can help with motor skills and speech and language and aid emotional regulation.

But schools need to feel confident that the chosen provision understands their needs and keeps them safe. Finding a provision that has a person-centred approach is essential, and with autism-aware practitioners, ASD children have an opportunity to thrive. Lymley Wood has been hosting ASC children at its residential camps successfully since 2019, with pupils making lifelong memories and strengthening friendships.

Find out more at www.lymleywood.co.uk or call 07951 257 813.



English Heritage

From grand medieval castles to the battlefield where the armies of King Harold and William the Conqueror clashed, and a Roman villa to a Cold War bunker, the places where history happened bring a topic to life. Standing in these very spots reinforces your teaching in the classroom, so inspire your students with a free self-led visit to over 400 English Heritage sites, or let our experts take the lead in an interactive Discovery Visit workshop. Support your visit with free teaching resources that have been developed by the team of qualified teachers, educational experts and historians.

For more information or to book your trip visit www.english-heritage.org.uk/learn/school-visits

De Havilland Aircraft Museum

Capture and keep the attention of your pupils with a visit to one of the country's premier aviation museums, where the emphasis is not only on historic aircraft but also on the vast contribution manufacturer de Havilland Aircraft Company made to the South Herts scene. Situated at Salisbury Hall, London Colney, just off J22 of the M25, it offers a specially tailored experience for students from the age of four upwards through its collection of more than 20 de Havilland aircraft – they can even sit in some – and range of engines.

For more information, visit www.dehavillandmuseum.co.uk or call 01727 826 400 (24hr).





Colchester Zoo

Colchester Zoo is more than an award-winning family day out, it offers an inspiring backdrop for education too. Colchester Zoo provides a wide variety of engaging school sessions full of inspiring content, with direct links to the national curriculum. From art to geography, science to debating skills, there are sessions for all ages. During the workshops, learning is brought to life through the use of biofacts. Skulls, feathers, furs and taxidermy – the zoo's biofact store contains hundreds of amazing items. With the help of conservation educators, these interesting objects are used to enhance learning opportunities, inviting visitors to get up close and personal with the wonder of wildlife!

To learn more, visit colchester-zoo.com or email education@colchesterzoo.org

Kent Wildlife Park

Kent Wildlife Trust is the leading wildlife charity in Kent and is expert in outdoor learning. With a passion for connecting learners with nature and offering high-quality, meaningful learning experiences, the park brings people closer to nature, ensuring that wildlife is protected and restored for future generations. With expert tutors on hand to guide school groups, learners will explore different habitats, practise new skills and have fun whilst meeting curriculum objectives. Staff are committed to ensuring high-quality provision and have been awarded the Learning Outside the Classroom quality badge.

For more information, email education@kentwildlife.org.uk or visit kentwildlifetrust.org.uk/education



Monkey World

Whether your pupils are learning about primate rescue work, the impact of deforestation or how woolly monkeys use their tails, Monkey World's experienced education team can enhance your trip to Monkey World and support learning in the classroom. As well as curriculum-linked sessions and workbooks, Monkey World offers visitors the chance to see over 250 monkeys and apes, including the largest group of chimpanzees outside of Africa, Europe's only orangutan crèche and a breeding group of woolly monkeys – all in one day!

Visit www.monkeyworld.org, call 01929 401 022 or email education@monkeyworld.org for more information.



PGL PIONEER!

Looking for a way to introduce your pupils to a range of exciting outdoor learning opportunities? PGL's new PIONEER! programme has been designed exclusively to support Years 3–4 in taking their first step into a lifetime of adventure! With a fantastic formula of activities, bond-building challenges and new experiences, everything on a PIONEER! residential has been thoughtfully matched to children's age and ability to ensure that their first trip away from home is a memorable one. PIONEER! adventures are part of PGL's new R.E.A.C.H. Breakthrough programmes, designed to support the learning outcomes that matter the most to teachers and pupils.

To book, visit
schoolsandgroups.pgl.co.uk/reach-pioneer

R.E.A.C.H. NEW HEIGHTS!

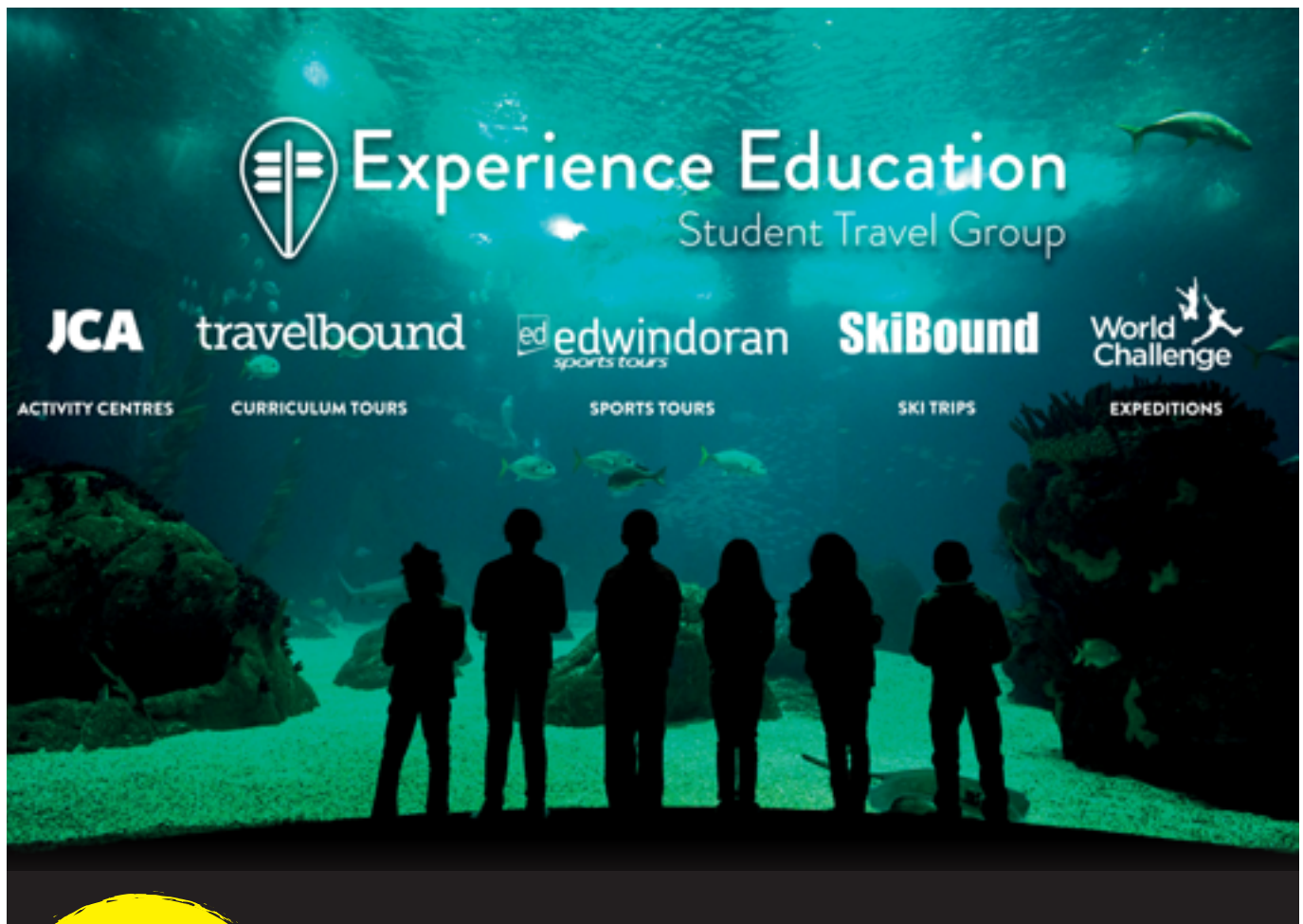
Part of PGL's new R.E.A.C.H. Breakthrough programmes, a PIONEER! residential offers a safe and supportive environment in which your pupils can try new things.



Forestry England

Inspire your class to become the next generation of tree scientists, foresters and wildlife rangers. Join Forestry England for a visit and enjoy hands-on learning filled with adventure and discovery. Reap the benefits of outdoor learning, to reduce stress, boost confidence and improve relationships while taking part in curriculum linked, meaningful activities. No matter the age or ability, there's something for everyone with forests across the whole of England. Engage your children with guided and self-guided visits and extend the life of your trip with free, downloadable resources.

For more information visit
www.forestryengland.uk/learning



DECADES OF EXPERIENCE

Experience Education's educational travel brands have been on a mission to provide unforgettable school trips for over 40 years, both at home and abroad.

Experience Education

The Experience Education group has successfully launched over 45,000 trips for more than 1.5 million students to 100 countries. Collectively, it provides the peace of mind teachers deserve by carrying out stringent health and safety policies and providing unrivalled financial protection. Individually, the group members' curriculum tours (travelbound.co.uk), sports tours (edwindoran.com), ski trips (skibound.co.uk), expeditions (weareworldchallenge.com) and UK activity centres (jca-adventure.co.uk) have made them widely trusted experts in worldwide tailored experiences for UK schools.

To learn more, visit www.experienceeducation.com

Wicked

Inspired by "one of the most influential children's stories of all time" (*The Times*), L. Frank Baum's *The Wonderful Wizard of Oz*, the stage musical *Wicked* is based on the novel by Gregory Maguire. The production's cultural and social education programme, Wicked Active Learning, connects teachers directly with the in-house education team, providing more than 65% savings on tickets with free teacher ratios, official workshops, post-show Q&As, and a free School Trip Guide. To maximise the educational value and learning potential of your visit, there is also a range of free classroom resources and lesson plans to support programmes of study for English, music, drama, art & design, PSHE, and citizenship.

Find out more at www.wickedactivelearning.co.uk



Photo: © Matt Crockett

Matilda The Musical

Matilda The Musical is the multi-award-winning musical from the Royal Shakespeare Company, inspired by the beloved book by the incomparable Roald Dahl. With book by Dennis Kelly and original songs by Tim Minchin, *Matilda The Musical* is the story of an extraordinary little girl who, armed with a vivid imagination and a sharp mind, dares to take a stand and change her own destiny. Winner of over 100 international awards, including 24 for Best Musical, *Matilda* has been delighting audiences of all ages live on stage in London's West End for over a decade.

Find out more at www.matildathemusical.com



Photo: Manuel Harlan © the RSC



Conway Centres

With four centres across North Wales and Cheshire, Conway Centres have the perfect locations for schools to come together and make life-long memories. Whether children are visiting the cosy forest-based Delamere centre for their first residential, stepping back in time to the Iron Age era at Burwardsley, combining arts with adventure at Tattenhall or canoeing on the private dock at the Anglesey centre, there's something to inspire everyone at Conway Centres. Children will enjoy progressing through the different centres and experiencing new activities, with the comfort that they know the centres, the experienced onsite staff and how Conway Centres works.

For more information visit
www.conwaycentres.co.uk or
 email conwaycentres@edsential.co.uk

National Museums Liverpool

National Museums Liverpool offers a range of curriculum-linked workshops for schools across its museums and galleries. Sessions are led by experienced facilitators who use fascinating collections and exhibitions to engage pupils. At World Museum, children can explore its planetarium and aquarium, and enjoy sessions on topics like Ancient Egypt. Over at Museum of Liverpool, there are workshops about Anglo-Saxons and Vikings, the Victorians, trade and industry, and more. Maritime Museum is an amazing place to learn about RMS Titanic, while International Slavery Museum, located in the same building, offers workshops exploring the impacts and legacies of transatlantic slavery. Finally, the Walker Art Gallery offers gallery tours as well as sessions on subjects like Greek mythology.

Find out more at
www.liverpoolmuseums.org.uk/learn/workshops



Photo: © Robin Clewley



Embracing OUTDOOR ADVENTURE

Learning in the natural world today helps children adapt to the challenges of tomorrow...

Learning new skills in childhood is fundamental to human development. These skills come in many forms – from physical movement to reading, writing, and listening. Despite facing increasing workload demands, teachers are the people who need to come up with innovative ideas to build and extend children's learning, sparking their interest and full engagement while ensuring diversity and inclusivity of practices. This challenge comes at a time when primary school children's physical literacy levels have not returned to pre-pandemic levels and their psychological well-being remains a significant area of concern (1). In particular, neuropsychiatric and developmental disorders such as attention deficit

hyperactivity disorder (ADHD) and autism spectrum disorders are becoming common (2).

We presently live in a world that resembles a moving target. To put this rapid pace of change into perspective, it is estimated that 65% of children today will end up in jobs yet to be invented (3). Although the specific trades, industries or tools needed to complete these jobs are unknown, we already recognise that a range of 21st-century skills, or QI skills, are required for them to adapt to continual change. These skills include their ability to be self-aware, empathise with others, question how the world

works and how it could be, become strong-willed, and overcome and learn from failure. We know that youngsters who score high on psychosocial skills at an early age, as opposed to pure academic skills training, report better adult outcomes in education, employment, and mental health (4).

Experiential learning

Nurturing an optimum blend of physical, social, cognitive, and emotional literacy is most important in childhood. This is where brain growth is most prolific, and a toolkit of skill sets can be fostered to help children adapt to

the challenges of today and oriented to help them face the demands of tomorrow. Learning by a range of means and experiences enables children to see the world at a granular, personalised level (how I make sense of information and what it means to me) and with a global perspective (how I impact others through my actions). This experiential approach helps children not only to distil information but also learn how to integrate it with other experiences and use it effectively. Therefore, although the power of acquiring knowledge is unquestionably important, cultivating a child's sense of purpose and passion is equal to the importance we place upon the retention and assessment of information.

Connecting with nature

The unpredictable and dynamic nature of outdoor adventure (OA) reflects our world of constant change. This makes it an ideal pedagogical tool for the development of skills needed for children to adapt to

“Outdoor adventure provides the bedrock for real-life learning that is both memorable and meaningful”

present difficulties and build capacity for their future.

In essence, adventure represents our willingness to take risks and learn through uncertainty. Adventure education is about placing healthy demands on children to ignite their sense of worth and purpose in life. This involves educators and parents being responsible without being overprotective so that youngsters are never allowed to wobble, trip, stumble or fall, and as a result, miss out on the experience of what it is like to get back up again. OA, therefore, provides the bedrock for real-life learning that is both memorable and meaningful.

Research suggests that learning in predictable, uni-sensory settings, like some classrooms, is less impactful than in changeable, multisensory environments (5). Here, learners can connect first-hand with their surroundings, awakening their creative thinking, care for others and problem-solving capabilities. OA learning facilitated within and around schools also provides unique opportunities for both students and staff to take stock, relax and gain perspective on their lives and the bigger picture. These are all experiences that make up the fundamental building blocks of resilient behaviour.

Whether youngsters immerse themselves in nature within their localities, school grounds or a broader outdoor residential

experience, natural settings provide a sense of freedom, an awareness crystallised by the pandemic lockdowns. Schoolchildren engaged in nature-based learning have reported better academic achievement (in comparison to their peers or projected attainment) in reading, mathematics, science, and social studies, and are more intrinsically motivated (6). Nature exposure is shown to improve children's concern for the environment, motor skill abilities, school attendance and wider learning, particularly on tasks requiring attention, working memory and collaborations with others (6, 7). Indeed, in natural settings youngsters with ADHD display fewer symptoms and are better able to focus on a particular task (8).

Lasting growth

Despite these many benefits, OA and nature-based learning do not offer a magic solution to fix young people or indeed take away the overburdening responsibilities of teaching. For example, substantial numbers of youngsters, particularly those from disadvantaged households, have restricted access to outdoor spaces (9) and gained less from nature connections during the pandemic lockdowns than their more affluent peers (10). Furthermore, to

understand the power of OA and reduce barriers to participation, more robust research is required to understand the underpinning mechanisms within OA that can be optimised to generate beneficial outcomes for a plurality of learners. Nevertheless, there is a wealth of evidence to suggest that, if appropriately delivered, OA and nature-based learning generate meaningful educational outcomes in natural settings that shift young people from a fixed position of surviving to one of thriving and personal growth. At a point in time where children and their teachers have faced unprecedented upheaval and threats to their well-being, it has never been more important to create daily opportunities for them both to build their adaptive capacity and emotional competence to deal with uncertainties.



Dr John Allan is head of learning and impact at Kingswood



@Kingswood_



kingswood.co.uk

IN SUMMARY

- Primary school children's physical literacy levels have not returned to pre-pandemic levels, and their psychological well-being remains a significant area of concern.
- We live in a world that resembles a moving target; it is estimated that 65% of children today will end up in jobs yet to be invented.
- A range of 21st-century skills, or QI skills, are required for young people to adapt to continual change. Nurturing an optimum blend of physical, social, cognitive, and emotional literacy is most important in childhood.
- A toolkit of skill sets can be fostered to help children adapt to the challenges of today and oriented to help them face the demands of tomorrow.
- The dynamic nature of outdoor adventure reflects our constantly changing world; this makes it ideal for developing the skills children need to adapt to present difficulties and build capacity for the future.

References

1. bit.ly/40JyfuM
2. bit.ly/3R67kee
3. bit.ly/3G86yHo
4. bit.ly/3sxdqLn
5. bit.ly/46gh8Xq
6. bit.ly/47Jpc4h
7. bit.ly/46IKrHZ
8. Retrieved from bit.ly/3SPac0u
9. bit.ly/47Bzfls
10. bit.ly/3unkFWC



FOR THE THRILL OF LEARNING



023 8081 4442
education@paultons.co.uk



@paultonseducate
paultonspark.co.uk/education

6 THINGS TO DO AT...



Paultons Park

With over 70 rides and attractions, beautiful gardens, and a host of birds and animals, there is plenty to keep any class entertained. . .

DID YOU KNOW...

Paultons Park operates a 'no visit, no charge' policy and invoices after the trip takes place!

1 Head into Tornado Springs

Set in a 1950s American town, Tornado Springs boasts eight exciting rides and attractions. The Storm Chaser rollercoaster is sure to have your class in a spin, while the exhilarating Cyclonator will challenge even the bravest pupils. Grab your driving licence at Al's Auto Academy or tame the wild rivers on Buffalo Falls. There's something for everyone in Tornado Springs!



2 Book a workshop in the Learning Lab

Enjoy a curriculum-based workshop in the UK's most unique classroom! Paultons Park's Learning Lab is fully themed, with bubbling test tubes and smoking pipes, and is sure to engage every pupil. Workshop highlights include Rollercoaster Forces, where children learn all about the forces on rides and conduct experiments using the park's K'Nex coasters. In Ride Programming, children take on the role of engineers to program mini Sky Swinger rides.

3 Walk with dinosaurs!

Step into a Jurassic world where dinosaurs of all shapes and sizes greet you at every turn. Lost Kingdom is home to three rollercoasters, including the mighty Flight of the Pterosaur, where riders get a bird's-eye view of the land as they swoop over the kingdom. Take a jeep tour of the park's dinosaurs or even come face to face with a T-rex in the meet-and-eat show.

4 Venture into Wild Lands

Step into Wild Lands and discover a host of birds and animals, set within Paultons Park's own African village. Enjoy the stunning walk-through aviary and get closer than ever to a range of unique birds. In the nocturnal house, pupils can see fennec foxes, sugar gliders, and tiny pygmy mice up close. Outside, children can meet the cheeky meerkats and stunning porcupines, as well as many other mammals.



5 Picnic in beautiful surroundings

Lunch is a key part of any visit! The park boasts several undercover seating areas for hungry pupils. The main seating area can house 450 people. On colder days, heat lamps are available, and the area is conveniently located next to toilets and a free water bottle refill station. If the weather is nice, there is nothing better than eating under the cedar trees within the park's beautiful gardens.

6 Enjoy the variety

Whether you are finding out about penguins at the daily keeper talk and feed or dropping 25 metres on the thrilling Magma ride, there is so much variety for school groups. Paultons Park has a range of options, whether it's for a learning trip, a reward trip, or a mixture of the two. Teachers will also enjoy the complimentary adult ratios, free pre-visits, zero deposit, and the park's 'no visit, no charge' guarantee.



SAVE 10%
with our school
packages

SCIENCE FOR SCHOOLS

School trip
Summer celebration visit
In-school workshop
Mobile Planetarium

Book now
winchestersciencecentre.org



Come Face to Face with Prehistory!



Stone To Iron Age School Trips at
celticharmony.org

- ☒ Measure your school, football pitch, playground, or any space;
- ☒ Use the Operation Ocelot calculator to create your target;
- ☒ Donate or start raising money as a team to save the same size area in Brazil.

MISSION TWO

OPERATION OCELOT

ATLANTIC FOREST, BRAZIL

BRAZIL'S ATLANTIC FOREST, ONE OF THE WORLD'S TOP FIVE BIODIVERSITY HOTSPOTS, IS CRITICALLY ENDANGERED. ONLY 7% OF THIS ONCE-VAST FOREST REMAINS INTACT TODAY.

JOIN STEVE BACKSHALL IN HIS MISSION TO SAVE THESE HABITATS AND TAKE THIS FANTASTIC OPPORTUNITY TO INVOLVE YOUNGSTERS IN A PROJECT THAT TEACHES THE IMPORTANCE OF WILDLIFE CONSERVATION.

A DONATION OF ONLY £100 WILL SAVE 1 ACRE OF ATLANTIC FOREST FOR GOOD!



WORLD
LAND
TRUST
Registered Charity No. 1001291

©Rohan Kilham

6 THINGS TO DO AT...



Knowsley Safari

Highlight the importance of conservation and connect your pupils with the wonders of the natural world. . .

DID YOU KNOW...

Knowsley's five-mile safari drive is the longest in the UK and home to everything from cheeky baboons to a magnificent pride of lions.

1 Wild & Well

From splashing in puddles to exploring woodland, this programme is the best way to connect your class to nature, improve their awareness of conservation action, and bring a smile to your pupils' faces. From creating bird feeders and splashing in puddles to constructing dens and going on exciting scavenger hunts, all the activities are designed to create that powerful connection between children and the wonders of nature!



2 Guided baboon bus tour

No coach? No problem! Your class will be able to explore Knowsley's hilarious baboons up close on one of its specially kitted-out baboon buses. Your very own tour guide will drive you around the five-mile safari route, including through the baboon enclosure. You can always include a discovery workshop to get the most out of your day.



3 Discovery workshops

Taking place either in one of the safari classrooms or out and about in the foot safari, Knowsley has a range of workshops to choose from, all linked to the national curriculum. You can choose from Hidden Habitats, where your class will learn all about different animal habitats around the world, and Conservation Champions, which delves into the world of endangered animals, investigating what causes animals to become endangered.

4 Livestream Safari School

Can't get to the safari park? Knowsley will come to you! Join the team for a virtual session to find out about the work that Knowsley Safari staff do to protect animals in the wild. Your workshop will be livestreamed to your classroom, and you'll also be able to ask presenters questions in real time too.



5 Guided safari coach tour

Get the most out of your safari drive with your very own guide. Find out amazing facts, information, and stories about Knowsley's animals as you travel around the five-mile reserve.

The tours are fun, interactive, and suitable for all age groups.

6 Champions of Change

Champions of Change is a full-day school trip to Knowsley Safari designed to grow participants' confidence and communication skills. The team will give pupils the tools to empower others about conservation issues and cover ways we can all help our planet. Your KS2 class will learn different presentation skills from Safari educators and have the opportunity to practise their skills before performing a conservation story to spread the word. The offered activities are linked to the science, drama and PHSC areas of the national curriculum.





Give them an **adventure** to remember

Our best-selling
adventure programme
is offered at 11 incredible
UK locations

CONFIDENCE!

LIFE SKILLS

RESILIENCE

Now with
Skills Builder
level 3
accreditation



Skills Builder
Practising
essential skills

2022-23

We equip young people with the essential skills to succeed, so you can be sure that a Kingswood adventure residential will provide all the excitement, laughter, memories and long lasting life skills to help them back in the classroom and for years to come.



Book now for 2024/25 from just £41.75 per person per night + VAT (all meals included)

sales@kingswood.co.uk





EVERY MAGICAL MINUTE

Incredible camping

Whether it's part of a three-day trip or a week-long adventure, a typical day at Kingswood is anything but ordinary...

9:00am | Zipwire

An adrenaline rush to kick off the day! While students summon the courage to step off the platform and whizz through the air, their classmates offer encouragement and cheer them on. Ziplining gives kids a valuable experience of risk-taking in a safe, supported environment.

11:00am | Obstacle challenge

This series of problem-solving tasks encourages children to hear each other's ideas, communicate effectively, and build trust as they work towards a common goal. To ensure kids are always reaching their full potential, Kingswood's highly trained instructors are great at adapting the course to suit a group's ability.

1:30pm | Jacob's ladder

This is where trust and teamwork truly win the game. Groups of 2–3 climbers



navigate their way up a giant high-ropes ladder of horizontally suspended logs, with each level getting trickier and more nerve-jangling. Pupils must communicate effectively, weigh up their options, and implement their plan in order to make it to the top!

4:00pm | Bushcraft

Giving kids a chance to step away from 21st century distractions and explore the wild! Kingswood's trained bushcraft instructors will lead students through a wide range of survival skills, such as shelter building, fire lighting, and cooking a meal outdoors.

7:00pm | Campfire

Is there a more quintessential camping experience than sitting around a fire, toasting marshmallows, and singing

DON'T FORGET!

Your trip includes all meals, and the team are happy to accommodate special dietary requirements such as allergies or religious practices.

songs? This is a great way for both pupils and teachers to unwind and reflect on their full day of activities.

9:00pm | Bedtime

Pupils head to bed for a good night's sleep before another day of adventure! Kingswood's 11 centres come in all shapes and sizes, and accommodation options include 4–16-bed dormitories, adventure lodges, and eco-pods.

{ BEFORE YOU GO }

"We were blown away by your amazing team, the standout being how much the activity leaders engaged with the children. Nothing was too much trouble. Just fantastic!"

Five Ways Primary,
visited Peak Venture, April 2023

"Incredible team of staff leading the activities. The energy and enthusiasm kept our children engaged and excited. We would love to work with you in the future."

The Downley School,
visited Green Park, March 2023

"Beautiful facilities. Engaging, hardworking staff. They'll try and accommodate anything for you. Even the kitchen staff are lovely with the children. We LOVE it!"

Milnrow Parish CofE Primary,
visited Dearne Valley, May 2023

School trips to excite & inspire with NST...

Explore a world of discovery, fun & learning

Creating expertly planned
trips for over 55 years

Tailormade itineraries for
UK & Europe destinations

Online school trip
organiser & travel app

Peace of mind – protected
by ABTA & ATOL

24- hour support & dedicated
destination representatives

Externally verified Safety
Management System

@NSTSchoolTrips



5 REASONS TO BOOK AN...

NST school trip

Discover a world of learning beyond the classroom...

30 SECOND BRIEFING

NST has over 55 years' experience in providing inspirational school trips with immeasurable benefits. Their expert team will create an enriching learning experience, ensuring your visit makes lasting memories for pupils, fostering confidence and independence in a safe environment.

1 Tailor-made trips

NST passionately believes in the importance of enriching educational experiences and understands everything that goes into organising a trip. Their tailor-made itineraries are carefully crafted by their expert team with inspirational destinations to perfectly complement your learning objectives and budget, giving parents plenty of time to save and helping pupils thrive outside of the classroom.

2 Award-winning technology

With NST's My Tour Manager, you can access all your paperwork 24/7, including personalised checklists and travel documents, so you can keep on top of your trip admin. Their Safety Management System offers 24-hour emergency cover, audited accommodation and transport, a wide choice of assessed excursions, and free preview visits to assist with risk assessment. Plus, while on tour, fellow teachers and parents can follow your location with NST's helpful tracker, Locate My Trip.

3 Exclusive: Château d'Ebbingham

Experience a fun first trip overseas with NST's exclusive school group accommodation in Northern France. In



a rural location just 45 minutes away from Calais, Château d'Ebbingham is set in superb private grounds with a range of recreational facilities. Its four buildings accommodate pupil and teacher rooms alongside dedicated dining and teacher areas. Visitors also receive all-round support from a dedicated group co-ordinator. After a busy day out exploring the local area, take part in memorable activities such as snail tasting or a silent disco!

4 Learning outcomes

NST's primary school trips create strong bonds through teamwork and develop essential social and emotional skills that contribute to a positive and supportive learning environment. Their experienced team will create the ideal itinerary for you to offer learning benefits and well-being improvements, particularly if it's pupils' first stay away from home. Trips can help improve independence skills and provide an opportunity to build resilience, enabling your learners to thrive and attain knowledge in a practical and fun way.

5 Travel in the UK or overseas

NST provides a fantastic selection of tailor-made primary school trips, including London, York, Edinburgh, and Northern France, where pupils can grow their cultural capital. Why not take your group to see an amazing West End show? NST's in-house ticket team will secure you the best seats in the house! Or if you're wanting a first overseas experience, rest assured that their team will be with you every step of the way.

KEY POINTS

- With over 55 years' experience creating expertly planned school trips, NST can offer your group an inspirational visit in the UK or overseas.
- Peace of mind – NST is a member of both ABTA and ATOL, so you can rest assured that your money is protected.
- Your dedicated tour co-ordinator will use their unrivalled local knowledge to create a tailor-made itinerary to meet your group's needs and learning outcomes.

Secure your next school residential trip with

JCA

Specialists in outdoor activity adventures, we provide schools with exhilarating residential trips tailored to encourage development, nurture skills and gain confidence.

COME VISIT US!

Our flagship activity centre at **Condover Hall, Shropshire** welcomes schools, groups, and families to experience outbound activities on an adventure to remember.

Croft Farm Waterpark, Cotswolds

Specialising in providing quality learning experiences on the water, our Croft Farm Waterpark features its own 12 acre chest-deep lake and Royal Yachting Association approved school.

☎ 01273 647230 ➡ jca-adventure.co.uk

✉ enquiries@jca-adventure.co.uk

Did you know?
We also run
netball and football
tournament weekends
for schools and clubs!



Experience Education

Student Travel Group

JCA is part of the Experience Education family, enriching lives through experiential travel.

experienceeducation.com

6 THINGS TO DO AT...

Condover Hall

Pupils will embrace the out-of-the-norm learning opportunities at JCA's flagship activity centre in Shropshire

1 Reconnect fun & learning

For young learners, there can be a disconnect between *enjoying* learning and seeing the *value* of learning. Arguably, addressing this begins with an understanding of learning behaviours and attitudes that see children interact with activities at Condover Hall Activity Centre differently from how they typically might in the classroom. By being exposed to out-of-the-norm activities and working with peers to complete problem-solving tasks, pupils can attribute value to the task at hand.

BEFORE YOU VISIT

Prepare notes on your pupils to share with the instructors onsite. The JCA team are there to support children's development and you, as teachers, in creating an extension of your learning environment.

2 Raising achievement

Whether it is scaling a wall, going for a bullseye on the archery range, or building a raft to race on the onsite lake, pupils are made aware of their objectives through skill-based learning. As adventure activities have varying definitions of success (e.g., reaching halfway up the climbing tower for someone with a fear of heights), every child can experience achievement and the positive reinforcement this builds intrinsically.

3 Improved behaviour

Richard L Curwin's *Meeting Students Where They Live* identifies the intertwined challenges found in pupils' headspace resulting in unmotivated children frequently misbehaving and children who misbehave frequently not caring about learning. While a pupil's behaviour must be understood through causality (e.g., struggling to grasp a concept in class, uninterested in learning, or defiant in nature), the varied activities at Condover Hall present new experiences not immediately associated with learning in the eyes of students.

4 Building resilience

Away from the classroom, a pupil's character typically takes on a new face, like Bruce Wayne becoming Batman. Much like the Dark Knight, children can build resilience to handle unfamiliar situations, whether it's conquering the abseiling wall or having the belief to reach the trapeze from the leap of faith. These support the growth of other skills, including teamwork, handling conflicting opinions, and collectively organising ideas to solve a problem.

5 Great instructors

Ballifield Primary School recognised the value of JCA's trained instructors, commenting: *"We have been coming to Condover for many years and always have a good time. The staff are fantastic and very responsive to our needs. One instructor this year was particularly good and went above and beyond with one of our more challenging pupils. She understood his triggers, pre-empted how he would be on each activity, and planned accordingly."*

6 Teacher development

With JCA instructors taking the lead in activities at Condover Hall, teachers have the chance to observe their pupils in a variety of practical scenarios. Children will be learning skills and applying strategies to real tasks, providing reinforcement and purpose to their learning. This will be hugely beneficial for the teacher back in class when adapting their delivery to different learners.



AIRHOP

#JumpIntoHappy

JUMP INTO THE BEST SCHOOL TRIP EVER!



AIRHOP

BRISTOL

CHELMSFORD

COLCHESTER

GUILDFORD

FREEDOME
CHESHIRE OAKS

rush

birmingham

high wycombe

jump in

ABERDEEN

CAMBERLEY

EDINBURGH

ELSTREE

ENFIELD

ESHER

IPSWICH

SHREWSBURY

SLOUGH

WARWICK

Swap times tables for Trampolines,
the whiteboard for Wipeout
and algebra for AirBag.

We'll add a dynamic twist to your PE Lessons
and provide an unmissable day out!

Scan to find your
nearest location



All of our 17 parks offer bouncing fun
for everyone –
plus meet high health & safety standards

- PAS 5000 Compliant
- Qualified First Aiders

Ability to accommodate large groups



WWW.AIRHOP.CO.UK
0330 223 3333





6 THINGS TO DO AT...

AirHop UK

Get your pupils energised with a trip to these trampoline and adventure parks...

DID YOU KNOW...

AirHop can host very large groups – up to 250 people, depending on the park.

1 Bounce on trampolines

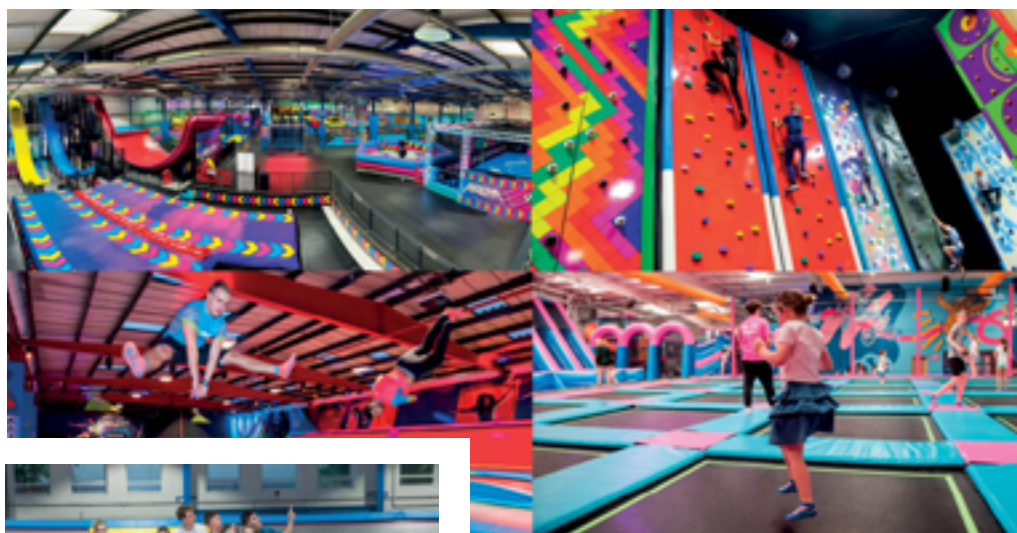
Your group can enjoy ultimate bouncing fun at AirHop parks, which feature wall-to-wall trampolines that span the floor and reach up the walls. Bouncing is a low-impact activity that burns as many calories as 30 minutes of jogging in just 10 minutes while improving balance, coordination skills, and spatial awareness, as well as working your core and improving circulation.

2 Hoptastic team challenges

There are plenty of ways for classmates to compete while having fun at the same time! Pupils can shoot some hoops in a gravity-defying game of basketball on the Slam Dunk lanes. Or team up and take on an opposing team in fast and furious games of dodgeball or football in the Airena (airtracked football pitches). Or race up the peaks on a variety of climbing activities at the indoor Clip'n Climb zones found at Esher, Enfield, Chelmsford and Aberdeen. No climbing experience required!

3 Elevate your Hopability

Children can challenge their reactions and physical abilities in the notorious Wipeout Zone. Will they stand victorious or be swept away? They can test their balance and strength against a worthy opponent on the Battle Beams. Or check their reaction time on the Reaction wall or High 9 by tagging all the lit-up pods as fast as they can. Time your bounce carefully!



4 Hop yourself happy

Trampolining isn't just fun, it's good for you as well. It reduces stress in the body and releases endorphins. These are your body's feel-good chemicals, so you'll happily come back for more bouncing! More time spent bouncing means more time spent active and less time spent staring at screens and social media. Trampolining is great for your mental health.

5 Hop and learn

AirHop parks can add a dynamic twist to your next school trip with a selection of different learning opportunities. From physical education activities that help to explain the importance of being fit and active and literacy and media tasks, where students can vlog or blog their trip, all the way to maths, design, and business activities, such as designing and running a trampoline park.



6 Ditch the books for a rewarding bounce

Swap times tables for trampolines, the whiteboard for wipeout, and algebra for the airbag, and let your students blow off some steam on a reward-based trip – an end-of-year treat, for instance! AirHop's fun-packed activities come in all shapes and sizes, and its team of friendly and experienced staff are always on hand to engage, enthuse, and supervise groups to ensure that everyone has as much fun as possible and leaves with a huge smile on their face.



They will take away far more than just
FANTASTIC
memories...



E-mail conwaycentres@edsential.co.uk
visit www.conwaycentres.co.uk or call 01248 714501
to find out how we could give your students the best school residential experience.

Part of
@EdsentialUK



*Dive in to your
next residential*

6 PROGRAMMES TO TRY AT



Conway Centres

From getting hands on with the Iron Age to conducting environmental investigations, you'll find a trip to support any topic



1 Delamere Discovery

Perfect for Year 1 and Year 2 visitors, the Delamere Discovery programme is a journey of exploration, where children can discover the forest and the nature that calls it home. Tucked away in Delamere Forest, this cosy centre offers a wide range of curriculum-linked activities – from identifying plants and habitats to support the science curriculum to focusing on geography by exploring the features of the forest and streams.

2 Iron Age at Burwardsley

Rich in Iron Age history, the Burwardsley centre is the ideal place for children to delve into this fascinating era. With its very own replica roundhouse and activities like wattle and daub construction, archaeological digs, and clay-pot making, children will be instantly immersed in their curriculum!

3 WW2 Experience Day at Tattenhall

Set in the historic village of Tattenhall in Cheshire, this brand-new programme gives children the opportunity to experience first-hand what it was like to live on Britain's Home Front during WW2. There are historical landmarks, stories, and real-life experiences at every turn, and children will learn through an immersive and interactive series of activities and workshops such as Horsa Glider making, stretcher building, and rationing and cooking on a fire. From the moment they arrive until they leave,



DID YOU KNOW?

The Conway Centres team know that every residential should be an extension of pupils' learning in school, which is why they have programmes created with the curriculum in mind.

children will pack so much learning into their day.

4 Anglesey Mental Health & Wellbeing Adventure

With poor mental health on the rise among children and young people, Conway Centres have a specially designed programme to support your group with this crucial aspect of wellbeing. Combining outdoor adventure, which helps pupils with building resilience and boosting self-esteem, with wellbeing activities such as yoga and mindfulness, which provide all-important wellbeing techniques, children will develop as individuals and leave the centres with the tools they need to support themselves with any pressures they may face.

5 Environmental curriculum residential

With the environmental curriculum currently rolling out in schools, Conway Centres have various residential

programmes to support learning across all their sites. Options include the Environmental Awareness Adventure programme, which combines adventure activities with environmental investigation in North Wales, and the Earth Summit programme, which tackles issues like climate change, human actions on the planet, and conservation through art, dance, drama and music workshops.

6 Choose a tailored programme

Conway Centres pride themselves on creating bespoke residential that support any topic of schools' choosing. St Catherine of Siena Catholic Primary School, Lowton, for example, enjoyed a specially designed 'Romans' residential, including canoeing the Roman crossing on the Menai Strait and creating Roman Mosaics. They commented: *"Great knowledge of Romans from the instructors. The activities were lots of fun. Teaching was first class!"*

Get in touch with the Conway Centres team, who will build you the perfect residential!



Find the perfect SCHOOL TRIP in an instant!

There's something for every

AREA

AGE

SUBJECT

BUDGET

SEARCH BY
Curriculum Link
Postcode
Age
Budget

We have curated the best educational trips from around the UK and beyond for your students to enjoy.

From free days out to curriculum-rich excursions and residential adventures, there's something for every class and every budget.

FREE support to help you plan the perfect trip

Download guidance and templates for completing your risk assessment

Download
NOW



Download your school trip proposal and planning guidance

Download
NOW



Find the perfect school trip for your students this year.
Visit: www.teachwire.net/school-trips



EVERY MAGICAL MINUTE

Go beyond the textbook with PGL

Enable big thrills from new experiences with a PIONEER! adventure, specifically designed for your Year 3-4 (P4-5) pupils.

9am

After breakfast, your adventurers will start the day embracing a new experience designed specially for their age range: micro scooters. As they grow in independence while trying something outside their comfort zone, many will surprise themselves with their achievements. PGL's expert team will be on-hand to reassure and encourage younger children, meaning whatever their ability, they can build resilience.

10:30am

With their new-found confidence, pupils head off for their second adventure activity of the day. PGL's climbing experiences have multiple levels, so making breakthroughs is easy on any scale. Supported to broaden their horizons, children's confidence will skyrocket!

12pm

So much excitement will make you hungry! Enjoy a child-focused menu for lunch, packed with great quality and choice. When adventuring on PGL's PIONEER! programme, your group will enjoy earlier mealtimes and longer dining sessions – perfect for slower eaters.

2pm

Now it's time to blow off some steam. Children will enjoy mini fencing, another new experience curated to grow their confidence. They'll fence in a safe, supportive environment, with equipment and session delivery thoughtfully matched to their age and abilities. Then it's on to their final activity session of the day, archery.

5pm

After refuelling in the dining room, your group get to make their very own badges to capture their PIONEER! experience. They'll receive a choice of templates to create their designs to take home at the end of the trip, along with their certificates of achievement.

8:30pm

Their first night away will be easier after a campfire! Your designated 'Groupie' will be on hand to encourage singing and support social skills. Pupils can make a wish to throw into the fire, with some magic wish powder providing a colourful way to watch them fly up into the night. A hot chocolate rounds things off before bed and a good night's sleep, ready for more action tomorrow!

RECORD OF ACHIEVEMENT

Experiencing non-stop adventure for the first time has never been more exciting for your pupils with our carefully curated PGL PIONEER! trips.

ANYTHING BUT
TEXTBOOK AT



{ BEFORE YOU GO }

IN CLASS

In the lead up, complete PGL activity worksheets and create signs for pupils' dorms to help prepare and excite them for the journey ahead.

DISCUSS

Children will be facing new challenges during their trip, including being away from home, often for the first time. Discuss what they're most looking forward to triumph.

ASK

Pupils (and parents!) will be apprehensive, so speak to PGL's helpful customer service advisors to discuss any additional requirements you may have for your trip.



Forestry England

A classroom with no walls

Enjoy Forestry England's
brand-new resource,
Ranger in a Bag.

With everything you need for
a fun-filled forest adventure,
all zipped up into a handy
backpack.

Inspire and engage children as
they take on the role of a trainee
forester, ecologist and more, all
with clear learning outcomes
linked to the curriculum.

Take your class to one of
the nation's forests and
reconnect with nature.
Experience a self-guided
visit that's fun, adventurous
and memorable.

For more information please visit
forestryengland.uk/ranger-bag
and find a forest near you.





LEARNING JOURNEYS

Ranger in a Bag

This brand-new learning resource is the perfect tool for a self-guided visit. Ranger in a Bag is suitable for preschool and primary-aged children and has everything you need for a fun-filled forest adventure, all zipped up in a handy rucksack. The bags are based around a role/career in Forestry England with clear learning outcomes that link to the national curriculum.

Self-guided visits

Forests are natural classrooms – the perfect place for hands-on learning. Take your class on a self-guided visit and the time is yours, allowing for free play, exploration and child-led discoveries. The forest is also the perfect setting for role-play and scenarios, a fantastic way to encourage creativity and inspire their minds. Free downloadable resources can also extend the life of your trip.

Guided visits

If a self-guided visit is not for you, Forestry England has a variety of guided visits on offer across its forests. These range from bushcraft to forest ecology, and learning about forests and climate change. Whatever the session, these hands-on activities led by Forestry England staff, or third-party providers excite and engage your students. Head to the website to discover what's on offer at a forest near you.

WE LOVE TO LEARN

A classroom with no walls

Reconnect with nature in a fun-filled forest adventure for every child...

The nation's forests are the perfect place for a school trip. The benefits of children learning outside are well known: it can reduce stress, improve emotional well-being, build resilience, and boost self confidence. A forest visit allows for all this and much more, while offering a valuable learning experience. With forests all over England there is an opportunity

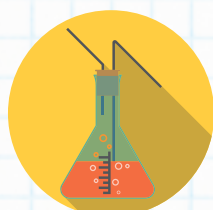
for every school to get involved. Forestry England offers plenty of free downloadable activity ideas to help you plan your perfect class visit. With its great ideas for EYFS, and key stages 1 and 2, you'll find everything you need to help your pupils to reconnect with nature and build long lasting friendships in a stimulating but low-stress environment.

CURRICULUM LINKS



GEOGRAPHY

Learn about native woodlands within the temperate forest biome using the geography lesson plan, or study maps and the physical and human processes that shape our environment.



SCIENCE

Learn about our native British trees and how important they are for both people and wildlife. Find out all about the forest cycle, woodland habitats and some fascinating real-life experiences.



PSHE

Help the children in your class develop an appreciation and understanding of the world around us. Reconnect, build relationships and inspire children within a beautiful forest setting.



DIVE INTO OUR CHOCOLATEY WORLD OF LEARNING



Get your class exploring our range of curriculum-linked sessions - including **The Maya**, **Bean to Bar** and our brand new **Creative Language** workshop - for a fun and fascinating dive into the world of Cadbury.

BOOK NOW AT
cadburyworld.co.uk





LEARNING JOURNEYS

Session 1 – The Maya talk

Pupils will be introduced to the great city of Chichen Itza and discover the Mayan myths and legends about how humans were created. They will also see real-life cocoa pods filled with the cocoa beans that were so valuable to the Maya around AD 900, as well as the wooden whisk they used to make their favourite chocolate drink, xocolatl.

Session 2 – NEW Creative Language Workshop

Pupils will utilise their knowledge of language to create a persuasive advertisement for a product of their own design. They will look at past adverts and discover ways to describe and persuade viewers to desire their product. They will work in teams to create the most engaging tagline and use descriptive verbs and adjectives to convince the rest of their class their product is the best.

Session 3 – Design and Technology Workshop

Pupils will discover the fascinating process by which Cadbury develops new chocolate bars and learn how both wrappers and advertisements are linked to the design of each bar. They'll also take a closer look at Cadbury's packaging and how it's evolved over the past 100 years, work in small groups to design their own wrapper, and see real-life chocolate moulds used in the Cadbury factory at Bournville.

WE LOVE TO LEARN

It's choc-full of discovery!

Explore history, design and much more with a day out at Cadbury World

With over 32 years' experience and more than 2,000 school groups attending each year, Cadbury World offers unique educational trips that provide a fascinating insight into the nation's favourite chocolate brand. There's an assortment of interactive chocolatey zones to explore and a variety of informative curriculum-linked talks and workshops, including Bean to Bar, the Maya, and Design and Technology.

The one-hour talks and workshops complement your group's day out perfectly, expanding pupils' knowledge on a range of topics. Self-guided tours are also available, currently priced from just £9.20 per pupil, with one adult admitted free for every eight children. All of this makes Cadbury World the perfect day out for schools. To find out more and to book, visit the website quoted below.

CURRICULUM LINKS



HISTORY

In Bull Street, the Cadbury Story and the Bournville Experience zones, uncover the philanthropy of the Cadbury family, and how their beliefs created a holistic approach to industry.



GEOGRAPHY

Explore the Aztec jungle and uncover the journey of the cocoa bean all the way from South America to Europe and into the heart of Victorian England.



D&T

Throughout the tour, discover how the manufacture of chocolate has changed since Cadbury made its first bar, and how chocolatiers made chocolate by hand in the past.

www.cadburyworld.co.uk





4 REASONS TO TRY...

Porthpean Outdoor Education Centre

Having reopened under new management last year, Porthpean Outdoor Education Centre, overlooking the sea in Cornwall, is the perfect place for your next school residential

1 Our experience

We are proud to have over 15 years of experience in organising successful school residentials. Visiting schools will be in very safe, experienced hands. All activities will be provided by fully qualified professionals, experienced in working with children and young adults.

2 The activities

We are committed to the provision of fantastic-value school residentials. We have put together an action-packed two-night/three-day package, offering a

AT A GLANCE

- Brand new spacious and airy bunkhouses with room for up to 12 children
- Onsite activities and our very own beach!
- Evening entertainment and a full meal programme included in the price

mix of beach and land-based activities while still allowing for downtime. High ropes, climbing walls, caving, giant SUPs, coasteering, kayaking, archery, laser tag, and bodyboarding are all on offer.

3 Evenings at Porthpean

Evenings at Porthpean OEC provide busy teachers with much-needed opportunities to relax and enjoy their stay as much as the children. The timetable offers instructor-led activities all day until lights out! BBQs, pizza making, silent discos, campfires, and

talent shows will all form part of the Porthpean OEC experience.

4 The accommodation

Alongside our timber camping pods, we have luxury bunkhouse-style canvas accommodation with raised beds, carpeted flooring, and lots of room to stand and move around! Our new Cornish-themed camping villages include spacious and airy bunkhouses with room for up to 12 children; timber camping pods and an additional bell tent for teachers; and a marquee for group meetings and wet-weather play.



porthpean.com

T: 01726 72901

E: info@porthpean.com



YOUR CORNISH ADVENTURE STARTS HERE

Cornwall's leading provider of school residentials

Private onsite accommodation with all meals included
Action-packed activities programme with our own beach

Start planning your school's Cornish adventure at Porthpean Outdoor Education Centre...

Call 01726 72901
Email info@porthpean.com
Visit www.porthpean.com







5 THINGS TO DO...

The Bear Grylls Adventure

Give pupils a day of action they'll remember forever with challenges for every adventurer

GOOD TO KNOW

You'll get one complimentary teacher ticket for every five pupils' tickets booked, so you can support students every step of their adventure journey.

1 Take to the high ropes

Walk the plank, tackle the rolling log, and create your own adventure on Europe's tallest high ropes course. Reach the top, and you'll be rewarded with stunning views of the surrounding area – and, of course, an awesome sense of accomplishment.

2 Get climbing

Inspired by some of the most breath-taking peaks from around the world, adventurers will push, pivot,

and pull their way to the summit on routes inspired by El Capitan, Fontainebleau and more. Nothing else matters but the step ahead of you.

3 Master archery

On The Bear Grylls Adventure's archery range, you'll get to grips with the bow and arrow before letting the arrows fly at the targets. Happy with your aim? It's time to up the challenge, with some games and quick-fire rounds to test your precision.

4 Try an escape room

Put your class's teamwork, problem-solving skills, and patience to the test. Can your team keep their cool and work together to crack the code and beat the clock? It's time to find out!

5 Brave the assault course

Inspired by the Royal Marines, the Bear Grylls Adventure's assault course is a range of obstacles that will challenge adventurers as they race against their friends. Obstacles include scramble nets, monkey bars, traverse beams and A-frames.



www.beargryllsadventure.com/groups

E: groupbookings.uk@beargryllsadventure.com

The Bear Grylls ADVENTURE

INDOOR/OUTDOOR ACTIVITY CENTRE



SCAN HERE TO START PLANNING
THE MOST EPIC SCHOOL TRIP EVER



David Shepherd Wildlife Foundation Education Programme

- Book a free talk or workshop on endangered animals, habitats, and conservation for primary-age children in schools and afterschool provision.

- Facilitated by experienced education specialists, your children will learn how conservation projects we support help tigers, elephants, snow leopards, and other rare animals.

- Our content is designed around the core curriculum, using a mix of oracy, science, problem-solving, and art.

- Online and face-to-face sessions available, depending on location.



Info and booking: davidsshepherd.org/education/free-school-talks/
Or email education@davidsshepherd.org



OUTDOOR | ADVENTURE | GROWTH

ACTIVITY RESIDENTIALS

OUTDOOR & INDOOR ACCOMMODATION FROM 30 TO 300 STUDENTS

mendip.co.uk/camps

 **Mendip Hills near Bristol**



THE WOW FACTOR



Timotay Playscapes

Allow pupils to really enjoy outdoor play and develop their physical, social, and cognitive skills with Timotay Playscapes' natural playgrounds



Timotay Playscapes believes that every child has the right to play, and understands that outdoor play is not just for fun but an important part of every child's physical, social, educational and cognitive development. Timotay Playscapes designs, manufactures, and installs award-winning natural timber playgrounds across the UK and globally. The natural timber playgrounds and playground equipment are designed with imaginative play in mind, and to enhance outdoor learning experiences.



Experienced experts

An experienced team of experts is available to guide you through the process, from the initial consultation through to installation. The team is bursting with innovative ideas and will help you capture your playground vision and bring it to life. With Timotay, you are accessing a depth of knowledge and skillset that will allow your playground dream to become a reality.

Durability

All of the playgrounds and playground equipment are created by skilled and experienced woodcraftsmen using natural redwood timber. This can withstand long-term exposure to the elements while maintaining dimensional stability, resulting in safe, durable products with a long working life.

Unique playgrounds

As each school is unique, Timotay recognises that teachers and pupils will have specific requirements, so takes the time to understand how you use your outdoor space. The end result will be an incredible, natural playground that is unique to your school and the children in your setting.

Quality and reassurance

Timotay Playscapes will take care of the entire process for you, from initial consultation through to design, manufacturing, installation, and post installation playground care. The team will manage the entire process to ensure the longevity of your investment.



**BOOK NOW FOR 2024
FROM £9.75 PER PUPIL!**

LEGOLAND.co.uk/schools

'Building your creative trip brick by brick'

14
Curriculum
Workshops
Available

NEW
SCIENCE &
MATHS
Workshops

Our
Workshops
are delivered by
LEGO® Education
Academy Certified
Facilitators!



For more information email us at
School.Enquiries@LEGOLAND.co.uk
or call **01753 626415**



OUR WORKSHOP TEAM

With over 60 years teaching experience!



James

"I HAVE ALWAYS HAD A PASSION FOR TEACHING AND LEARNING AND THE OPPORTUNITY TO TEACH WITH LEGO® EVERY DAY IS A DREAM COME TRUE!"



Rachel

"I JOINED THE LEGOLAND EDUCATION TEAM IN 2017 AND I ABSOLUTELY LOVE MY JOB. IT IS GREAT FUN DELIVERING ALL THE DIFFERENT WORKSHOPS WE OFFER AND MEETING THE WIDE VARIETY OF SCHOOLS WHO VISIT US."



Kirsty

"I JOINED THE LEGOLAND® EDUCATION TEAM LAST YEAR AND HAVE THE PLEASURE OF TEACHING SO MANY DIFFERENT STUDENTS THE FUN OF LEARNING THROUGH PLAY USING LEGO®!"

The LEGOLAND® Windsor Resort – The Ultimate School Trip Destination.

'Engaging', 'brilliant' and 'fantastic': just three of the words teachers have used to describe their school trip experiences at the LEGOLAND® Windsor Resort.

Our ethos is all about allowing pupils of all ages to engage and explore through creative and imaginative play. The Resort's offer of theme park rides and attractions, combined with interactive educational workshops lead by our experienced facilitators makes it a strong contender for school teachers seeking somewhere engaging to take a school trip.

The Resort is an exciting venue for learning outside the classroom and most suitable for Key Stage 1 to Key Stage 4 pupils. There are awesome attractions for Secondary School students to be found across the Resort including The Dragon Rollercoaster, LEGO® NINJAGO® the Ride and The Flight of the Sky Lion! Or even get hands on with our LEGO Robotics Secondary Workshop using LEGO SPIKETM Prime Robots!

NOT ALL CLASSROOMS HAVE WALLS.

PIONEER!

A lifetime
of limitless
adventure
starts here...

PIONEER!
NEW FOR
YEARS 3-4

PRICES FROM
£110_{pp}
+VAT

ANYTHING BUT
TEXTBOOK AT

pgl.co.uk/pioneer



SCAN ME



SCHOOL ADVENTURES