

ESSENTIAL

School Resources 22/23

SMART SUPPORT FOR SECONDARY EDUCATORS



teach SECONDARY

Outstanding advice from the UK's top education experts





Raise career aspirations by entering the Step into the NHS competition

Help your students learn about more than 350 NHS careers with free teaching resources and lesson plans.

Students can win some great prizes and celebrate the NHS' 75th birthday by creating an advert to promote the NHS career of their choice!

Search '**Step into the NHS competition**'



CONTENTS

4	Share A Smile This World Smile Day® – Smile Train	12	Online video resources – Historical Royal Palaces
5	Outdoor Learning – Conway Centres	13	National qualifications – Education Development Trust
6	ClassBuddy™ – Lapsafe	14	Oxford Smart Activate – Oxford University Press
8	Reward and Identity – Best Badges Ltd	16	An Inspector Calls – Various theatres
8	Essentials for your school – Glasdon	17	The Woman in Black – The Fortune Theatre, London
9	Build The Change Tuesday – The Day	18	Know your Body – The Eve Appeal
10	Multiplixing – Association of Teachers of Mathematics	20	The Making of Harry Potter – Warner Brothers Studio Tours
10	Eco-friendly picnic table – Recycled Furniture	22	Health Education England – NHS Careers
11	Pro Visualiser – HUE HD		
12	London's Best Views – CityExperiences		



**HEAD OF
COMMERCIAL
SOLUTIONS:**
Richard Stebbing

GROUP EDITOR:
Joe Carter

EDITOR:
Callum Fauser

EDUCATION MANAGER:
Hayley Rackham

COMMERCIAL TEAM:
Ria Bentham
Ashley Lower
Ian Blackiston
Laura Ingle
Gabrielle Pitts
Alfie Bennett

ACCOUNTS:
01206 505995

**DESIGN
& REPROGRAPHICS:**
Angela Scrivener

PUBLISHED BY:
Aceville Publications,
25 Phoenix Court,
Hawkins Road, Colchester,
Essex, CO2 8JY.
Tel: 01206 505900

The views in this magazine are not necessarily those of the publisher. Every effort is made to ensure the veracity and integrity of the companies, persons, products and services mentioned in this publication, and the details given are believed to be accurate at the time of going to press. However, no responsibility or liability whatsoever can be accepted for any consequence or repercussion of responding to information or advice given or inferred. Copyright Aceville Publications Ltd.

KS3 and KS4

SHARE A SMILE THIS WORLD SMILE DAY®

INTERNATIONAL . CLEFT LIP AND PALATE . CHARITY

TAKE A LOOK!

Change the world
one smile
at a time!

Every three minutes, another baby is born with cleft, a medical condition that can jeopardise their ability to eat, breathe, hear, and speak. By fundraising on World Smile Day®, 7 October, you can provide free cleft treatment to children globally.



In schools up and down the country, you are sure to see plenty of smiles on the faces of pupils, whether that's in the classroom, canteen, or playground.

Sadly, this isn't the case for the one in 700 babies born globally with a cleft. In the UK, cleft surgery is carried out within the first 12 months of a baby's life by the NHS.

However, hundreds of thousands of children living in resource-poor communities around the world are not as fortunate, and don't have access to the lifesaving cleft treatment they desperately need.

An untreated cleft can lead to difficulties with eating, speaking, hearing, and breathing. Babies and their families can also experience isolation from their communities.

By raising funds for Smile Train UK this World Smile Day®, your school can help provide these

children with the transformative treatment their families would otherwise be unable to afford, giving them the opportunity to live a healthy, productive life.

To register your support to Smile Train UK on World Smile Day® and receive your free fundraising pack, visit smiletrain.org.uk/community-programmes/schools. The fundraising pack

contains more information about our work and provides you with top fundraising tips. You can choose your own fundraising activities to suit your curriculum and raise as much as possible – it's all about taking part.

We look forward to having your support on World Smile Day® and working together to help change the world one smile at a time!



CONTACT



smiletrain.org.uk



ukinfo@smiletrain.org



0113 841 8101



NEED TO KNOW!

1

Smile Train is the world's largest cleft-focused charity, with a sustainable and local model of supporting surgery and other forms of essential, comprehensive cleft care.

2

On World Smile Day®, Friday 7 October, like every other day, around 540 babies will be born with a cleft. Clefts are a serious medical condition that can jeopardise babies' ability to eat, breathe, hear, speak, and so much else.

3

Choose fundraising activities on World Smile Day® that suit your curriculum and raise whatever you can – it's all about taking part. The funds you raise could make an immediate difference to a child whilst having a long-term impact on global health issues.

KS3 and KS4

CONWAY CENTRES RESIDENTIAL

RESIDENTIAL . ADVENTURE . ARTS . OUTDOORS . LEARNING



TAKE A LOOK!

They will take away
more than just
fantastic memories...

With over 45 years of experience, Conway Centres: Anglesey is the perfect location for schools to come together and make lifelong memories. In beautiful surroundings, Conway Centres offer courses that combine real-life outdoor adventure with immersive cultural arts, which increase achievement and inspire individuals.

Home to high adventure, engaging arts and a broad curriculum offer, Conway Centres: Anglesey is the place to be for secondary schools.

Whether your group are canoeing on the private dock with the Snowdonia Mountain range as a backdrop, climbing across the rockface on the Via Ferrata or immersing themselves in cultural celebrations, every young person thrives at Conway Centres – no matter their level of experience, ability or needs.

But at Conway Centres, they take away so much more than just fantastic memories. This unique residential experience is the perfect way of helping your young people grow, mature, gain new perspectives and build skills by providing them with experiential learning.

Secondary schools bring year groups back to Conway Centres year after year, confident that their young people will have an entirely new experience each time! Whether taking your Y7s for a 'Transition to Secondary' course, or your Y10s for a 'Revision Adventure' to prepare



them for their GCSEs, all year groups can enjoy experiencing new activities, with the comfort of knowing the centre well, and being welcomed back by the same experienced staff.

From ready-made programmes, created with the curriculum in mind, to tailored courses to support your school's goals – secondary schools achieve more with a Conway Centres residential.



CONTACT



conwaycentres.co.uk

conwaycentres
@edsential.co.uk

01248 714 501



NEED TO KNOW!

1

Conway Centres accommodate up to 400 people, making it perfect for whole year groups or MAT gatherings. Why not consider a 'Transition to Secondary' course? Support Y7 students through their transitions with a residential that helps develop their self-esteem and builds resilience, leaving them more than ready to take on their secondary studies.

2

Away from modern distractions, prepare students for their exams with a 'Revision Adventure' residential. Teacher-led sessions in the various classroom spaces will increase attainment and provide a deeper understanding of subjects. Adventure activities in between will deploy techniques that equip students with strategies for dealing with exam pressures.

3

Get the most out of your residential visit with the complete 'Conway Adventure Experience'. This bumper value programme offers students a jam-packed itinerary of broad and balanced activities, including water, rope, land, the arts and more!

KS3 and KS4

HOW TO KEEP YOUR DEVICES FULLY POWERED UP

EDTECH . HARDWARE . SAFETY . SECURITY

CONTACT



lapsafe.com



sales@lapsafe.com



01787 226 166



TAKE A LOOK!

Advice on keeping your devices safely stored and charged

If you're thinking of introducing multiple devices, such as Chromebooks or tablets, into the classroom, then buying a trolley or cabinet to keep them safe and charged is simple – right? Maybe not...



Over the years, the marketplace has been flooded with numerous charging solutions, making the process of working out which will best meet your needs and offer most value for money a real headache.

Schools will often be tempted to take the easy option and buy the cheapest, but as we all know, cheap isn't always the

best. So before you go rushing into any decisions, here are a few points to think about.

Where to start?

Ask yourself how the students will likely use the devices. Will you need to share devices between classrooms, or take them outdoors? How do you plan on keeping

them secure when they're not in use? Are any students going to be using their own devices, or will they only be borrowing hardware that you provide?

What about staff?

Also give some thought to the maintenance needs of your ICT Technician. How do they intend on managing essential device updates, software downloads? Will tablets need to be synchronised, and what levels of data transfer will you be looking for in your networked laptops?

What's available?

Market solutions in the charging space include mobile trolleys, fixed wall cabinets, desk cabinets and self-service loan lockers. Most will provide storage and charging facilities for a range of devices, and can cater for multiple devices at once.

Schools wanting to loan out specific devices on demand should consider intelligent lockers. These can be integrated with library management systems to track device loans, just as you would with borrowed library books. This can work really well when students need to borrow devices for short periods of time, requiring little to no staff contact – perfect for library study.



Southern Regional College

Self-Service Laptop Loan Lockers at the new Armagh Campus

That said, Self-Service Device Loan Lockers can also function as standalone units, allowing devices to be borrowed from various locations across your site.

Setting your budget

Having decided upon your preferred option, you obviously need to set your budget, bearing in mind the lifecycle and longevity of the product. Do you want to 'buy cheap' now, with the prospect of having to maybe make another purchase in a year's time? Or would you rather go with a solution that can be upgraded as your device needs change over time?

“Do you want to ‘buy cheap’ now, with the prospect of having to maybe make another purchase in a year’s time?”

Safety first

Always ensure that a laptop/tablet charging solution you're intending to use complies with all British Health & Safety electrical standards and safety guidelines. Check also that the solution is UKCA-certified (the replacement for the outgoing 'CE' mark) and includes safe power management as standard.

The latter can include load protection (also known as 'soft-start' protection), which ensures it won't trip a building's circuit breakers when fully loaded. It should also feature surge protection, so that any connected devices won't be damaged by electricity fluctuations.

Fit for purpose

If you're intending on having devices transfer data while they charge, a solution with built-in cooling will to prevent overheating. Most charging trolleys



will come with various extras, from built-in 7-day timers, through to networking ports and data transfer options. At a more basic level, make sure your devices can be accommodated and charged while held inside their protective cases, if your school uses these.

Security

Stick with solutions that utilise a fully welded steel chassis and avoid any with obvious weak points, such as plastic mouldings, wooden panels or doors. Additional security features can include built-in alarms, anti-drill locks and anti-jimmy plates at risk points.

Final thoughts

Finally, our number one piece of advice would be to do your homework and research the most popular products on the market. Try talking to other schools about the solutions they use, seeing them in action if you can, or requesting an on-site demonstration from a product supplier.

NEED TO KNOW!

1

Fully integrated charging solutions are designed to charge multiple devices simultaneously via a set of built-in charging leads, preventing the need for teachers to keep numerous AC adaptors to hand. Some charging solutions will automatically disconnect devices from the mains power when they're fully charged, thus saving energy and reducing a classroom's carbon footprint.

2

Avoid trolleys that utilise 'round robin' charging. This will only charge a few units at a time, or limit the amount of charge to each device before moving on to the next. Some solutions let you 'mix and match' multiple devices in the same trolley or cabinet, with many offering easy cable management to accommodate different AC adaptor designs.

3

For automated device loan applications, look for self-service lockers that combine loaning the 'best-charged' stowed device with simultaneous charging. Most are capable of displaying device availability messages and usage reports via an online dashboard, which can be very useful.





TAKE A LOOK!

For all your reward, identity and recognition needs

KS3 and KS4

BEST BADGES LTD

REWARD . RECOGNITION . STOCK . CUSTOMISED . IDENTITY

CONTACT



bestbadges.co.uk/schools



info@bestbadges.co.uk



01473 809 291

NEED TO KNOW!

1

For times when you'd like something a little more personal for your school, we're here to help with our range of fully customisable products – perfect for any occasion or outing.

2

With over 100 stock options available and same day dispatching, we can provide that extra touch when celebrating special achievements.

Badges and lanyards are essential for identifying students and staff. They can also be used for rewarding achievements, displaying school spirit or highlighting special events.

Our products can be custom made to order or purchased from stock. Customised orders can be designed to include the school logos, colours and text of your choice, to name a few examples.

Our stock lanyards – which can be used to hold ID cards, keys, or other small items – and stock badges are available in a

wide variety of standard designs, which are tailored to identify and reward specific achievements. Perfect for any school, they're a cost effective and speedy option, with free delivery on all stock orders valued over £50.

Custom badges and lanyards are a great way of promoting your school and showing pride in your community. Ordering from Best Badges Ltd is easy and convenient, with competitive prices and our friendly customer service team always on

hand to answer any questions you may have. Contact us today to place your order!



bestbadges.co.uk



TAKE A LOOK!

Smart, eco-friendly refuse solutions for schools

KS3 and KS4

ESSENTIALS FOR YOUR SCHOOL

FACILITIES . WASTE MANAGEMENT . RECYCLING BINS

CONTACT



glasdon.com



enquiries@glasdon-uk.co.uk

NEED TO KNOW!

1

At Glasdon, we have over 60 years' experience in designing, manufacturing and supplying essential products which can improve spaces, enhance site safety and support waste management systems and recycling within schools.

2

"We design our products to have a long service life and wherever possible they're made using recycled and recyclable materials."

Neil Gilkes, Sales Manager at Glasdon UK Limited

SCHOOL LITTER BINS

Glasdon produce an extensive range of litter bins for schools to ensure that pupils, staff and visitors dispose of their litter correctly. Our bins can be personalised to match your school's colours and even branded with your school crest or logo.

SCHOOL RECYCLING BINS

Improve your recycling facilities with the Glasdon range of recycling bins for secondary schools. Select from single-, dual- or multi-stream containers to best accommodate your needs.

PICNIC TABLES

We offer a range of high-quality recycled picnic tables that are suitable for outdoor school grounds. All Glasdon picnic tables are highly durable, offering a long-lasting, low-maintenance outdoor solution.

MAKE AN ENTRANCE

With the Glasdon Gateway you can create a smart, personalised solution for your school entrance or facilities. The Gateway is available in three colour finishes and can be supplied in different heights and widths across multiple configurations. There's also the option to add your own selection of custom graphics.

Glasdon
Quality By Design



KS3

BUILD THE CHANGE TUESDAY

FREE . WEEKLY . LEGO . SUSTAINABILITY . WORKSHEET

CONTACT



theday.co.uk/resources/build-the-change-tuesday



enquiries@theday.co.uk



0203 981 8080



TAKE A LOOK!

Getting pupils sustainability-savvy with creative ideas

The LEGO Group's Build the Change Tuesday is a brand-new, free weekly sustainability news resource for ages 8 to 13, inspiring children to debate sustainability issues and express their hopes for the future.

Looking to get your students sustainability-savvy? You can now tackle environmental issues in a 20-minute burst of activity that slots right into the school day. The LEGO Group and The Day are launching Build the Change Tuesday, a weekly sustainability resource involving debates, puzzles and creative challenges. With Build the Change Tuesday, many curriculum aims can be ticked off in registration.

Whether it's debating if an elephant can ever be considered human, or contemplating being your own central heating, pupils aged between eight and 13 will develop so many skills, including critical thinking, debating and creativity, just to name a few.

Each news story leads into a creative challenge, inspiring children to come up with innovative solutions to environmental issues in a hands-on way. They can gather LEGO bricks or any crafty materials they can find. Whether it's a LEGO animal sanctuary or a wind turbine made out of toilet rolls, students are empowered to use their huge imaginations to make real solutions.



As part of the wider Build the Change project from The LEGO Group, it's time for students to become activists. After all, they are the future of the planet.

Build the Change Tuesday is brought to you by the LEGO Group and The Day, and is the only free weekly resource from The Day's News Detectives programme; a no-fuss daily dip into the news for ages 8-13. A different theme every day of the week.



THE DAY
Build a better world

NEED TO KNOW!

1

"One of those invaluable activities that is short and to the point (taking a maximum of 20 minutes to complete) and instantly brings children up to speed with news and real world issues."

2

"It hits many curriculum areas in a real and easy way. Children can develop reading, comprehension and discussion skills along the way, and it can be used as little or as much as you like."

3

"Having news items little and often as you do with News Detectives also allows children to embed 'sticky knowledge' that they can then apply with confidence across the curriculum, in school and at home."



TAKE A LOOK!

To give students and teachers a fresh perspective on multiplicative reasoning

KS3

MULTIPLIXING – GRAZING IN THE MULTIPLICATIVE CONCEPTUAL FIELD

MATHEMATICS . MULTIPLICATION . REASONING

CONTACT


atm.org.uk/shop/ACT136pk

admin@atm.org.uk


01332 977 891

NEED TO KNOW!

1

Copies of the book are accompanied by more than 100 PDF slides for use in the classroom.

2

The ATM was first established in 1952, to encourage the teaching and learning of mathematics by relating more closely to the needs of the learner.

3

The book is priced at £10.80 for ATM members and £14.40 for non-members.

The *MultipliXing* book contains a total of 100 tasks for students, organised into 20 weekly sets of five daily tasks.

It is specifically written with the needs of mathematics teachers in mind – and indeed anyone else involved in mathematics education – and aims to provide an informative commentary alongside the aforementioned tasks, all of which involve the application of multiplicative reasoning.

The tasks themselves are aimed principally at students in lower secondary school, and have been designed to provide students and teachers with a fresh perspective on multiplicative reasoning, thus expanding the breadth and potential

scope of students' thinking and understanding.

It's hoped that this approach will help teachers adapt and refine their teaching methods in ways that acknowledge, and subsequently build on students' efforts at making sense of the tasks they've been set.

MultipliXing is written by Dietmar Küchemann, author of *Algebradabra* and *Algeburble* – both of which have been described as rare teaching resources that build up algebraic thinking, and are constructed on, and around, a clear understanding of generality and cognition. All three titles are published by The Association of Teachers of Mathematics (ATM).



KS3 and KS4

TAKE A LOOK!

Enquiry-based history learning

ONLINE VIDEO RESOURCES

BECOME A HISTORY DETECTIVE

CONTACT


www.hrp.org.uk/schools/learning-resources/

learning.info@hrp.org.uk

Our investigative film series bring to life the worlds of the Normans and Tudors in a format that's fun and accessible to KS3/4 students. Each bite-sized film is framed by an enquiry question and ideal for use in the classroom or as part of a homework task.

These free to use resources help students to develop their understanding of primary and secondary material and the skills needed to critically analyse evidence to build historical interpretations.

The Scoop: the Normans and the White Tower

The White Tower has stood at the centre of the Tower of London as an iconic symbol of royal power for almost one thousand years. Join Jezebel Factsman and her team of historical experts to uncover why the Normans

constructed the White Tower and what it reveals about Norman society.

This video series has been specifically designed to support teachers and students studying the Norman Conquest as part of the new GCSE AQA syllabus.

<https://tinyurl.com/y44ptud5>

Tracey Tooley investigates: Henry VIII

Join our intrepid history reporter, Tracey Tooley, on her mission to uncover England's most infamous monarch, Henry VIII. Through interviews with Henry's courtiers,

rivals, wives and daughters, Tracey explores the many facets of the King's life and reign.

It has been specifically designed as a school learning resource to support teachers and students studying Henry VIII and the Tudors as part of the England & Wales Key Stage 3 syllabus.


HISTORIC ROYAL PALACES


NEED TO KNOW!

The film series use Hampton Court Palace and the Tower of London as primary source material and encourage students to evaluate historical evidence.

KS3 and KS4

HUE HD PRO VISUALISER

1080P VISUALISER . BLENDED LEARNING . LIVE MODELLING . STUDENT ENGAGEMENT



TAKE A LOOK!

A versatile, yet simple way of incorporating visuals into your lessons

Captivate and inspire students with the colourful and affordable HUE HD Pro visualiser/document camera. Priced at £49.95 + VAT, it features Full HD 1080p resolution, a built-in microphone and LED lights. Record videos for blended learning, model experiments or calculations, livestream and capture images, or even use it as a basic microscope.

The HUE HD Pro is a plug & play, multi-purpose USB camera that works straight out of the box, and requires no training to use.

Compatible with Windows, macOS, Linux and Chrome OS, it can be connected to a computer and used immediately with any application that recognises a USB camera, such as QuickTime, the camera apps included in Windows 10 and Chrome, Zoom, Google Meet, MS Teams, Loom, Around, Slack, OBS and many more.

Light and portable, the camera comes supplied with a perpetual single-user licence of HUE Intuition software, which can be installed on multiple computers for use at school or at home for remote teaching.

HUE Intuition allows you to:

- Record video
- Annotate images
- Take snapshots triggered via keypresses, set intervals of time or motion capture
- Stream a live video feed
- Flip and mirror the video feed



The camera's flexible neck can be rotated 360° for a multitude of uses. Angle it straight ahead for use as a facecam, position it downwards for use as a visualiser, or bend the neck in real-time while examining objects.

Teachers can use the HUE HD Pro for an array of innovative, multi-curricular learning tasks and daily activities, including:

- Sharing students' work for peer editing
- Analysing and annotating texts
- Live modelling, marking and problem solving
- Demonstrating science experiments or recording techniques
- Video assessments
- Digitising paper resources
- Hybrid, flipped and blended learning

CONTACT



huehd.com/shop



[huehd.com/contact](mailto:info@huehd.com)



@HUEcameras

VIEW IT



Discover the benefits of the HUE HD Pro in our Bett awards video, viewable at youtu.be/cl3f500IziM

HUE™

NEED TO KNOW!

1

Flexible and portable – the HUE HD Pro is a flexible and lightweight camera that teachers can use everyday in the classroom or at home across a range of subjects.

2

Plug & Play – the HUE HD Pro camera can be connected to a PC and used immediately with any application that recognizes a USB camera.

3

Affordable – priced at only £49.95 + VAT, schools can afford to equip every classroom with a HUE HD Pro for the same cost as one heavy duty document camera.

4

I'd put a HUE visualiser on your "need" list. Use mine daily 6 years on!"

Nick Dempster @ICT_with_MrD



TAKE A LOOK!

Tours of the Thames for scholars and thrillseekers alike

KS3 and KS4

LONDON'S BEST VIEWS

SCHOOL TRIPS . BOATS . SIGHTSEEING . LONDON

CONTACT



citycruises.com/london



0207 7400 400

NEED TO KNOW!

1

Boarding locations for the Sightseeing Cruise include Westminster Pier, London Eye Pier, Tower Pier and Greenwich Pier, with an average cruising time of 40 minutes between each (except for 10 mins between Westminster and London Eye).

2

Some circular tours may require a boat change at Tower Pier.

Enjoy a memorable and entertaining day out on London's number one Thames sightseeing cruise – the perfect way to take in the capital's iconic riverside landmarks. Notable locations along the cruise route include The Tower of London, Tower Bridge, the Houses of Parliament, the South Bank and more besides.

The informative and entertaining commentary provided by our captains throughout each cruise will help to shed new light on both the history and modern sights of this fascinating city. With the

option to sit on our spacious open upper deck or in comfortable indoor saloons, you're guaranteed a panoramic view of London's best sights.

For families, a Thames river cruise is one of the most relaxing ways of seeing some of London's most iconic sights, without having to contend with lengthy traffic delays and busy trains.

For a more adrenalin-filled experience, why not book an exhilarating day out on the water with a River Thames speed-boat ride? On this fun-packed 50-minute ride, you'll see a

cityexperiences

by Hornblower™

series of famous London landmarks, from Westminster down to Tower Bridge, while experiencing the thrill of taking fast-paced twists and turns en route to

Canary Wharf and back.

On your cruise, make sure to keep an eye out for glimpses of Big Ben, the London Eye and the Tower of London as you return to Westminster.



TAKE A LOOK!

Market-leading, eco-friendly furniture for your outdoors

KS3 and KS4

ECO-FRIENDLY CLASSIC PICNIC TABLE

FURNITURE . RECYCLED . FREE DELIVERY

CONTACT



recycledfurniture.co.uk



sales@recycledfurniture.co.uk



0800 1777 052

NEED TO KNOW!

1

Our eco-friendly recycled plastic range can help save thousands of milk bottles from entering landfill, with 1kg of material being derived from 28 2-litre HDPE bottles

2

Bestselling tables and colours are available for delivery within just five to seven working days (UK mainland) – order now to guarantee delivery before the new school year!

Ahead of the new school year, you should look to install maintenance-free outdoor furniture on your premises. Why? The eco-friendly 100% recycled plastic material used across our range will last all year round without no need for any additional treatments – a long-term investment that will save you enormous amounts of time and money on otherwise costly annual upkeep.

Recycled plastic is extremely hard-wearing. It will never split, chip, crack, or rot, and comes with our market-leading 25-year guarantee. You can also benefit from savings of up to 25% when purchasing

multiple tables, allowing you to get the exact number you require for your outside areas at the best possible price.

Better yet, you'll be helping the environment with every purchase! Not only does recycled plastic entail less energy use, reduced water consumption and lower CO₂ emissions in its production, but when you purchase your furniture you can see exactly how many plastic bottles you'll be recycling. Just take our best-selling Standard Picnic Table, which recycles 2,100 milk bottles per table!

So take this opportunity to upgrade your school's outdoor furniture this new school year. Promote your

sustainability credentials within your catchment area with our maintenance-free and eco-friendly solutions for creating safe and comfortable recreation areas all can enjoy.

NBB
Recycled
Furniture



FIND OUT MORE



KS3 and KS4

EDUCATION DEVELOPMENT TRUST'S NATIONAL PROFESSIONAL QUALIFICATIONS

CPD . TEACHERS . LEADERS



TAKE A LOOK!

DfE-funded programmes to enhance leadership skills



Great leaders create the right conditions for improvement in classrooms and schools. Education Development Trust's National Professional Qualifications (NPQs) empower teachers and leaders to create conditions for change and embed evidence-informed teaching and learning at their levels of control.

NPQs are a national, voluntary set of qualifications designed to support teachers and leaders in their professional development.

NPQs are available across multiple levels – from middle leaders, such as heads of subject and department, to senior leaders, such as deputy heads, head-teachers and executive leaders. Each programme is fully funded for staff at state schools and state-funded 16-19 organisations.

Education Development Trust (EDT), an international not-for-profit organisation committed to transforming life chances by improving education, is a lead provider for the NPQs. With a reputation for high-quality professional development programmes, EDT is uniquely well-placed to deliver NPQs to an excellent standard.

EDT involves schools in the development of their programmes from the very start: in designing their approach, in creating curricula, materials and participant journeys, and in

delivering training as current, credible practitioners.

They also have strategic partnerships with several expert organisations to ensure that participants have access to evidence-informed content designed to address the issues teachers and leaders face each day. These organisations include Evidence Based Education, Sheffield Hallam University's Institute of Education, National Literacy Trust and the Pen Green Centre.

"This programme has equipped me with useful strategies that I have been able to put into practice in my role. Each task has given me useful skills and takeaways that I have utilised to improve my day-to-day leadership." – Aamir Kohli, participant on the NPQ for Senior Leadership

Applications are now open for EDT's October 2022 and February 2023 cohorts – apply early via the EDT website to secure your place.



CONTACT



educationdevelopmenttrust.com/npqs



npqs@educationdevelopmenttrust.com

NEED TO KNOW!

1

Education Development Trust's NPQs are flexible, adaptable and built to fit around a busy work schedule. The blended learning approach of these programmes consists of face-to-face training, self-study, and both live and recorded online learning.

2

The curricula, materials and delivery of their NPQs combine the best-evidenced science of learning approaches for developing knowledge, with the empowering routines and analytical rigour of deliberate practice, helping to embed what is learned. Expert leaders in schools and settings are made, not born, and deep knowledge and deliberate practice underpin the development of their expertise.

3

The programmes focus on putting theory into action with and through others, ensuring that whatever your leadership level or context, you understand precisely how professional development can create sustained impact.

KS3

OXFORD SMART ACTIVATE

SCIENCE . CURRICULUM . RESOURCES . CPD

CONTACT


[oxfordsecondary.com/
smartactivate](https://oxfordsecondary.com/smartactivate)


[schools.enquiries.uk
@oup.com](mailto:schools.enquiries.uk@oup.com)


 01536 452620



TAKE A LOOK!

A coherent
KS3 science curriculum
– and more!

Combining a coherent, evidence-led curriculum for KS3 science with integrated resources, assessment, next steps and CPD, *Oxford Smart Activate* will save you time and help you to empower your students to become the next generation of future scientists.



OXFORD
UNIVERSITY PRESS

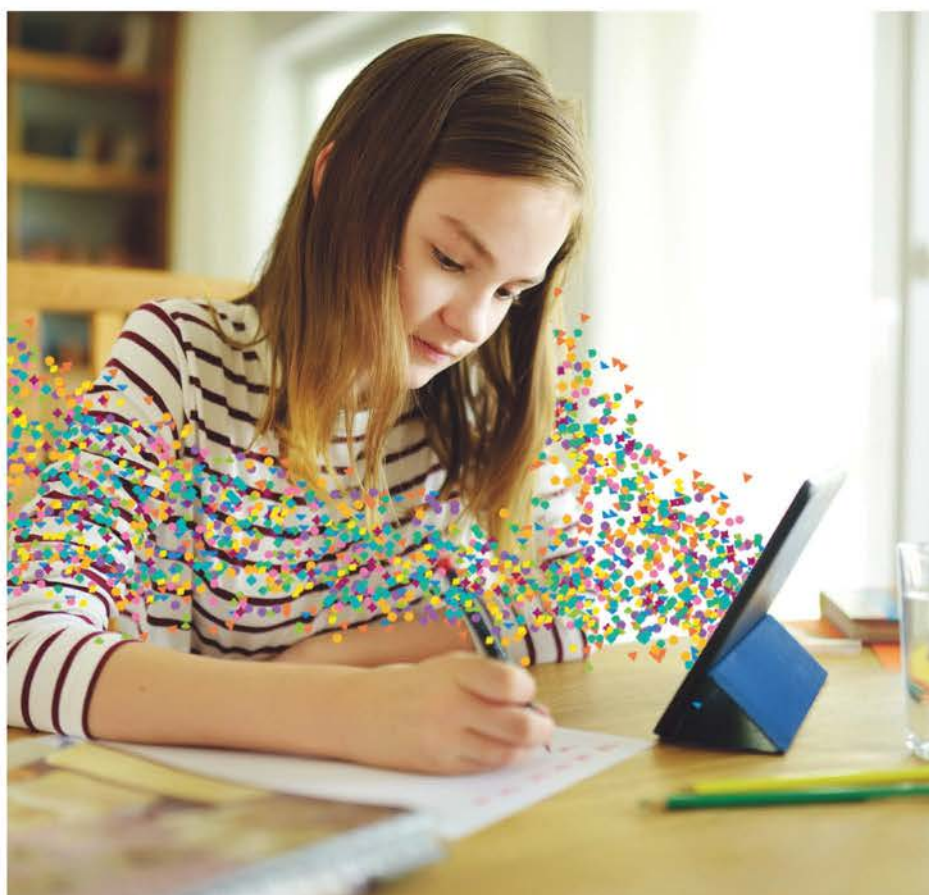
Oxford Smart Activate combines a coherent curriculum that builds on KS2 and guides students towards GCSE with resources and assessments developed by teachers. Six core components work seamlessly together to make up the full *Oxford Smart Curriculum Service*: curriculum, resources, assessment, next steps, CPD, and data and insights.

A coherent curriculum

Developed with coherence at its core, the *Oxford Smart Curriculum* for Science is carefully sequenced to build on prior KS2 learning and ease progression to GCSE and beyond. Importantly, the curriculum is designed to hold high aspirations for all learners and allow every student to find their place in STEM. It is vital that students see themselves in the curriculum and can make connections between topics and their lived experiences. There are examples of everyday science and diverse scientists throughout *Oxford Smart Activate*, as well as an emphasis on where science can take students in the future.

Complementary resources and assessment

Resources and assessment have been developed together, so that you can be confident they work together to deliver a curriculum that benefits all your students. Whether your department follows a 2-year or 3-year KS3 science curriculum, or you are thinking of changing your approach, with *Oxford Smart Activate* you are in control, and you have all the information



Welcome

Biology is the study of living things. This involves learning about you as a human being, the plants and animals around you, and the many tiny organisms that can't be seen with the naked eye.

In this book you will find out what plants and animals are made of and how these different structures work together to keep them alive.

1 Biology

Biology and you

Every second of every day, biology plays a massive part in your life. It explains how you grew into the person you are today and determines what you look like, how you complete activities, and why you like (or don't like) certain things. Biology explains why you get ill and how you get better again.

Did you know that the human body contains around 30 000 000 000 000 cells? Cells are tiny units that work together to perform the basic functions necessary for an organism to stay alive. However, you don't just have human cells inside your body. Millions of bacteria call your body home, and some scientists estimate there are more bacterial cells in your body than there are human cells!

The sciatic nerve is the largest and longest nerve in the body. It starts at the bottom of your spine and extends all the way down the back of your leg to your toes. The nerves connected to the sciatic nerve control the movement of the legs and the lower body.

Why can some animals only breathe underwater, while others can fly? Biology explains why all of the weird and wonderful organisms in the world, from blue whales to amoebas, exist. Using biology, you can also predict what kind of organisms will emerge in the future.

Biology and the world


A good understanding of biology is vital to keeping people healthy and protecting animal and plant habitats. Looking after the environment is essential for the survival of us and other species, many of which we depend on in our modern world.

What are living things made of?
 Microscopes have allowed scientists to look at the tiny structures that all living organisms are made of.

How does a baby form?
 Ultrasound scans allow medical professionals to see inside a pregnant woman and understand how the baby grows.

How are new plants made?
 Careful observations have allowed scientists to study how bees pollinate flowers – the first step in a new plant.

BIG QUESTIONS



Journey through B1

Chapter 1	Chapter 2	Chapter 3
Observing cells	Levels of organisation	Adolescence
Plant and animal cells	Gas exchange	Reproductive systems
Specialised cells	Breathing	Fertilisation and implantation
Movement of substances	Skeleton	Development of a fetus
Unicellular organisms	Movement – joints	The menstrual cycle
	Movement – muscles	Flowers and pollination
		Fertilisation and eimerination

“This has given the teachers a real boost – just to see how well their students are doing” – Pioneer School

you need to make informed and effective decisions.

Resources for students have been specially designed to be mindful of cognitive load, and top and unit learning journeys clearly demonstrate where students have come from and what they are working towards. Metacognition is embedded throughout. There is a blend of formative and summative assessment, and questions are asked that match exactly to the content that has been covered, making it easy for you and your students to see their progress.

Personalised next steps

Next steps are an exciting new addition to the *Oxford Smart Activate Kerboodle*, offering students personalised journeys through the curriculum. Students can be assigned weekly mini checkpoint quizzes which are auto marked in real-time. Scaffolded support is then offered to students who need to develop their understanding to become secure, while extension activities are offered to students who are secure to extend and deepen their knowledge. This enables quick and effective intervention, and helps to increase student confidence as they progress through the curriculum.

Integrated CPD

CPD and research resources to reinforce or refresh best classroom practice are available through the *Oxford Smart Activate Kerboodle*, and are accessible to all team members whenever they are needed. There will also be a live CPD session once a term with a member of the *Oxford Smart Activate* team, drawing on key aspects of the curriculum and what we've learned from the data that has been generated.

Meaningful data and insights

The *Oxford Smart Activate Kerboodle* provides real-time data to monitor your students performance, giving you meaningful insights to help you plan, teach, and assess all your students effectively. Misconceptions can be easily identified, with support on how to address them in the classroom. Your students can also see how they are performing and what they need to do next, empowering them to progress.

Sparkling awe and wonder

Awe and wonder is at the very heart of the curriculum – we want all students to get excited by science and look forward to their science lessons – and so *Oxford Smart Activate* introduces 'Big questions' to get students talking, and is packed with practicals. The range of practical projects provide opportunities for students to think and work like scientists, in turn building their confidence, developing their analytical skills, and allowing them to see for themselves the wonder of science.

When everything connects, anything is possible.



NEED TO KNOW!

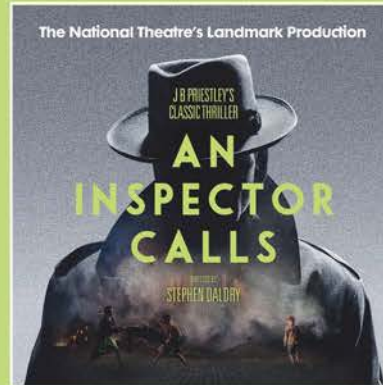
1
29 Pioneer Schools across the country have been using *Oxford Smart Activate* with their Year 7 classes since September 2021. Their feedback and experiences have been instrumental in the development of the service, helping to ensure that it works for all teachers and all students.

2
The *Oxford Smart Curriculum for Science* is underpinned by six guiding pillars: coherence; high expectations for all; responsive teaching and learning; learner identity; metacognitive learning; and awe and wonder.

3
Metacognition is fully embedded throughout, including opportunities in resources to review and reflect on learning and next steps, and teacher support for encouraging metacognitive strategies in the classroom.

KS3 and KS4

AN INSPECTOR CALLS



GCSE . ENGLISH LITERATURE . THEATRE

TAKE A LOOK!

A chance to see an acclaimed production of a seminal play

Stephen Daldry's multi award-winning National Theatre production of JB Priestley's classic thriller is about to commence a major 27-date tour of UK theatres. Winner of 19 major awards, *An Inspector Calls* has been hailed as the theatrical event of its generation

30 years on from its first performance at the National Theatre in 1992, Stephen Daldry's production of *An Inspector Calls* has won a total of 19 major awards, including four Tony Awards and three Olivier Awards, and has played to more than 5 million theatregoers worldwide. *An Inspector Calls* is the most internationally-lauded production in the National Theatre's history.

JB Priestley's brilliantly constructed masterpiece powerfully dramatises the dangers of casual capitalism's cruelty, complacency and hypocrisy. Stephen Daldry's epic production highlights the play's enduring relevance.

Written at the end of the WWII and set before WWI, *An Inspector Calls* is a compelling and haunting thriller. The story begins when the mysterious Inspector Goole calls unexpectedly on the prosperous Birling family home. Their peaceful family dinner party is shattered by his investigations into the death of a young woman.

Now world-renowned as one of Britain's leading theatre and film directors, Stephen Daldry has received Academy Award nominations for his films *The Reader*, *The Hours*, *Billy Elliot* and *Extremely Loud and Incredibly Close*. His recent West End theatre work includes David Hare's *Skylight* at the Wyndham's Theatre and Peter Morgan's *The Audience* at the Apollo Theatre.

Featuring Ian MacNeil's ingenious designs, with music by Oscar-winning composer Stephen Warbeck and atmospheric lighting by Rick Fisher, this landmark production is guaranteed to have old fans rushing back to, and new theatregoers inexorably compelled by, the mysterious world of Inspector Goole...



MORE INFO


aninspectorcalls.com

NEED TO KNOW!

1

The play is hugely popular amongst school groups as a GCSE syllabus text, so we advise booking early! Take advantage of generous school discounts, available at each theatre.

2

An accompanying education pack is available to download from the show's website. It contains a range of ideas and activities to supplement your theatre visit, and can be used with both GCSE English classes studying *An Inspector Calls* as a set text, and GCSE / A & AS Level drama or theatre studies groups, who may be seeing the play in the course of their theatrical studies.

3

The pack also includes an in-depth exploration of the play, featuring exclusive interviews with Stephen Daldry and his creative team.

KS3 and KS4

THE WOMAN IN BLACK



GCSE . ENGLISH LITERATURE . THEATRE

TAKE A LOOK!

Treat your students to a venerable West End thriller

"It was 9.30 on Christmas Eve..."

Dame Susan Hill's acclaimed ghost story comes dramatically to life in Stephen Mallatratt's ingenious stage adaptation. Now celebrating over three decades in the West End, this gripping production is a brilliantly successful study in atmosphere, illusion and controlled horror.

A lawyer is obsessed with a curse he believes has been cast over him and his family by the spectre of a woman in black. At his wit's end, he engages the services of a sceptical young actor to help him tell his terrifying tale and exorcise the fear that grips his soul.

Their attempts to reconstruct and present the lawyer's story begin innocently enough – but as they start to probe further into his darkest memories, they soon find themselves caught within a frightening world of eerie marshes and moaning winds...

Julian Forsyth is a stage and television actor who first played lawyer Arthur Kipps in *The Woman in Black* in 2010. His other theatrical credits include *Guys and Dolls* at the Royal Albert Hall and *Sunset Boulevard* at the Coliseum, while his television credits include

Father Brown, *A Touch of Frost*, and *Holby City*.

Matthew Spencer is a fellow returnee to *The Woman in Black* as The Actor, having first played the role at The Fortune Theatre and later on tour. His other theatrical

credits include *Amadeus* at the National Theatre, *War Horse* at the National Theatre and *Nicholas Nickleby* at the Gielgud Theatre. He has also appeared on television in *My Family* and on film in *The Man You're Not*.



CONTACT



thewomaninblack.com



enquiries@groupline.com



020 7206 1174

NEED TO KNOW!

1

The Woman in Black is playing at The Fortune Theatre, London, and currently booking until April 2023. Special reductions are available for school groups of 10 or more at certain performances, with the best available seats priced at just £21.50 each (subject to availability). One teacher in ten gets to see the play for free!

2

Should you need any further persuading, you can see teachers and pupils giving their verdict on seeing the live stage show in the gallery, video section on the show's website.

3

Schools and groups can request a 20-minute, post-show Q+A session with the cast or crew and a complimentary education pack is available which offers an in-depth exploration of the play and the production process. For details please visit the Education page on the show's website.

KS1, KS2 and KS3

KNOW YOUR BODY

HEALTH EDUCATION . VIDEO RESOURCES . FREE



TAKE A LOOK!

Free health education lesson plans by The Eve Appeal on anatomy, menstruation, HPV and cancer and FGM

A set of FREE, ready-to-use, high quality, video-based health education lessons designed for 7- to 13-year-olds covering anatomy, menstrual health, and HPV and cancer, with age-appropriate, research-led and interactive information. The package also includes 'Introduction to FGM' lesson plans for Key Stages 1 to 3.

CONTACT



knowyourbody
lessons.org



nowyourbody
@eveappeal.org.uk



020 7605 0100

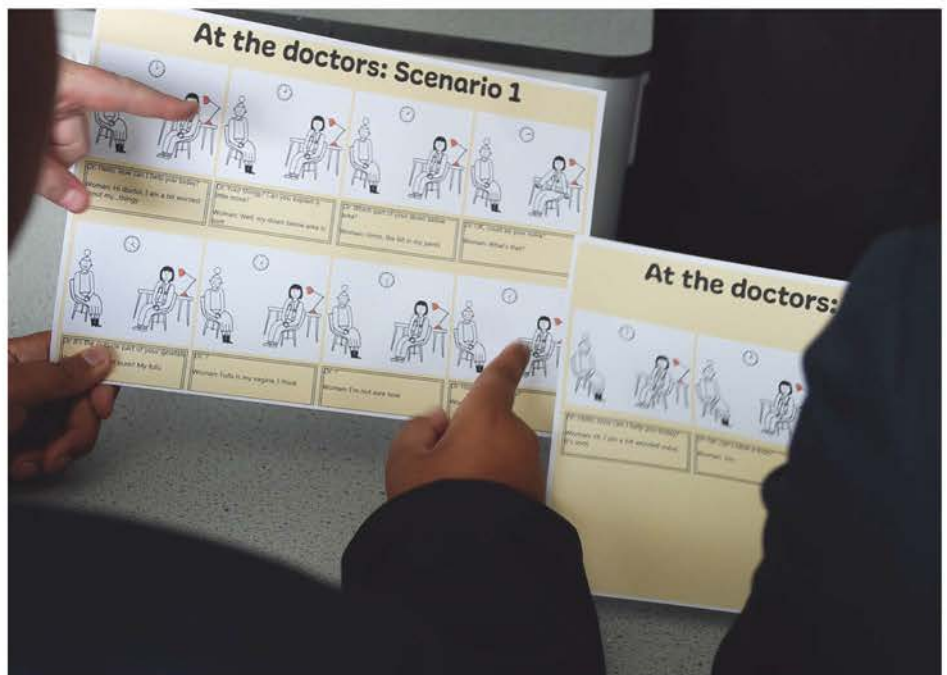


The UK's leading gynaecological cancer charity, The Eve Appeal, has launched the Know Your Body lesson plans on menstrual health, anatomy and HPV and cancer. Covering Key Stages 2 to 3, the programme also includes a set of introduction to female genital mutilation (FGM) lesson plans which have been designed in collaboration with the National FGM Centre and are split across Key Stages 1 to 3. All lessons follow a spiral curriculum, with links to the health and wellbeing topics of the PHSE Association's programme of study.

The lesson plans are all free to download and use. They equip schools and teachers with age-appropriate, interactive lesson plans that have been designed by specialists, and are easy to use and embed in class, following as they do the mandatory RSE duty, as well as the PSHE Association's standards for teaching.

The lesson plans are supplied in packs that contain guidance for teachers (which can be followed and/or adapted according to teachers' needs), a PowerPoint presentation, assorted activities and accompanying videos.

In a survey of over 1,000 young people recently conducted by the Sex Education



A still from a Know Your Body workshop being delivered in Greater Manchester.

Forum, only 35% rated the quality of their school's RSE as 'good' or 'very good', with 22% rating this as 'bad' or 'very bad'.

The Know Your Body lesson plans aim to foster prevention and plug the gaps in RSE for young people – knowing what's normal for you, spotting when things

aren't, and knowing when to seek help.

60 women and people with gynaecological organs are diagnosed with one of the five gynaecological cancers every day in the UK, yet awareness of them remains shockingly low, with just 2% of the population knowing all five gynaecological



Know Your Body launch event held on the 04/08.

cancers – womb, ovarian, cervical, vulval and vaginal.

Since 2019, RSE has been a compulsory part of the curriculum for schools in England, including the topics of menstrual wellbeing and cancer screening. This is fantastic progress, but without dedicated funding or training, schools are often left without the resources or expertise needed to teach these topics.

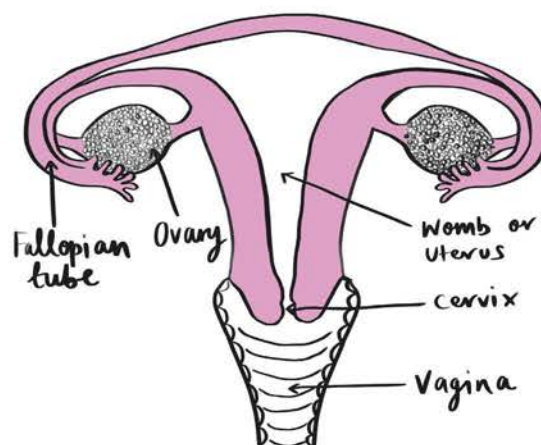
The FGM lesson plans are co-designed with the joint expertise of The Eve Appeal in gynae health, and the National FGM Centre in FGM prevention awareness and training. The government's statutory RSE guidance makes it compulsory for secondary schools to teach pupils about FGM and other harmful practices. While the duty to teach about FGM isn't mandatory for primary schools, we encourage all schools to teach about the topic at the earliest opportunity, from Key Stage 1, to identify and protect girls at risk earlier, and empower the next generation to speak out about the issue.

Know Your Body lesson plans have so far been piloted in 53 funded workshops held at some of the least-served schools in Greater London and Manchester, reaching over 1,100 young people.

Some key insights from the evaluation of the pilot's first phase include 88% of students reporting that their ability to name the internal gynae organs had improved, and 70% of students reporting that their understanding of how to keep gynae organs healthy has similarly improved.

78% of students reported possessing a better understanding of menstruation, while 62% of students felt they understood more about different period products. 60% of students further felt they knew more about what a 'normal period' looks and feels like, with 78% reporting that they had improved their knowledge of how to keep healthy during a period.

An impressive 96% of students meanwhile felt their understanding of HPV to have improved, alongside 93% reporting that they understood better how HPV relates to cancer. 86% of students felt their understanding of the HPV vaccine options and choices available to them had improved, and 89% of students felt they now knew more about cervical screening.



An illustration from the Know Your Body resources.

“Schools are often left without the resources or expertise needed to teach these topics”

NEED TO KNOW!

1

The Eve Appeal has launched free, research-led, video-based interactive 'Know Your Body' lesson plans on menstrual health, anatomy and HPV and cancer for Key Stages 2 to 3. Accompanying those are Know Your Body FGM lesson plans, designed in collaboration with the National FGM Centre, for Key Stages 1-3. All materials can be downloaded from knowyourbodylessons.org.

2

The lessons cover the health and wellbeing component of the PHSE Association's programme of study, and have been piloted in 53 school workshops, reaching over 1,100 students nationally.

3

88% of young people who attended the workshops say they now have a greater understanding of the internal gynae organs, while 96% of students felt their understanding of HPV had improved.

KS2, KS3, KS4, KS5

INSPIRE YOUNG MINDS AT WARNER BROS. STUDIO TOUR LONDON – THE MAKING OF HARRY POTTER

FILMMAKING . MAGIC . CROSS-CURRICULAR . AWARD-WINNING



TAKE A LOOK!

An award-winning
education programme
at the filmmaking home
of Harry Potter

Where else can your students step onto authentic sets, learn behind the scenes secrets and relive the magic behind the *Harry Potter* film series? Delve deeper into filmmaking with a free cross-curricular lesson, subject to availability



Spend a spellbinding day outside the classroom by stepping into the iconic Great Hall set at Warner Bros. Studio Tour London. Board the original Hogwarts Express at Platform 9 ¾ and take in the grandeur of Gringotts Wizarding Bank, all before wandering down Diagon Alley. Earmuffs ready? Brand new for 2022, just

like a Hogwarts student you can step into Professor Sprout's greenhouse and pull out a potted Mandrake.

Explore two soundstages and a backlot filled with original sets, animatronic creatures and breathtaking special effects. Experience green screen technology first hand, learn how intricate

CONTACT



wbstudiotour.
co.uk/schools



learning@wbstudiotour
.co.uk



0800 640 4750
(Schools Booking Team,
available Mon to Fri at
8:30am – 5:30pm, and Sat to
Sun at 10am to 5pm)



WARNER BROS.
STUDIO TOUR
LONDON

THE
MAKING OF
Harry Potter

prosthetics help transform actors into creatures, and marvel at the innovative artistry that brings a director's vision to the screen. Behind the scenes secrets of the most magical film series of all time will be revealed, with learning opportunities around every corner.

As part of your school visit, take a deeper look at the art of filmmaking with cross-curricular lessons delivered by a team of qualified teachers in purpose-built classrooms. The learning offering includes a variety of lessons spanning Key Stages 2 to 5, and covers a range of curriculum areas including STEM, Art and Design, English, Business Studies and Film and Media. The learning programme was created to inspire the next generation of filmmakers, providing the link between the classroom and how it is applied to the filmmaking process and real-life jobs.

During each lesson, students will have the unique opportunity to see original props and costumes from the Harry Potter films up close. New for this academic year, Film and Media students can explore the fascinating topics of either storyboarding or mise-en-scène as part of their visit. Other available lessons include Movie Maths, Costume Distressing, Screenplay Stories and Movie Graphics. Each lesson includes pre- and post-visit resources to assist with lesson planning both before and after your visit.

All 45-minute lessons are free to visiting schools, and the Studio Tour is a Learning Outside the Classroom Quality Badge holder. Lessons are subject to availability, so book early to avoid disappointment.

Warner Bros. Studio Tour London welcomes all visiting schools with dedicated team members who will greet coach arrivals and present classes with wristbands and activity passports, the latter of which are used to collect stamps throughout the Studio Tour. Quiz trails are available to download from the website to add a further educational element as students wander through the film sets. Remember to try out one of the green screen experiences on offer, where students can ride a broomstick, just like in the films, and receive a free digital photograph. Printed photographs are available to purchase at a discounted rate as part of our school package.

“Take a deeper look at the art of filmmaking with curriculum-linked lessons delivered by a team of qualified teachers”

Lunch areas for groups are available outside near the coach park, in the Food Hall or halfway through the Studio Tour in the Backlot Café, subject to availability. Alternatively, Knight Bus lunch boxes can be pre-ordered before your visit for an additional cost.



The Studio Tour is an accessible attraction, with step-free access in most areas and lifts to reach the classrooms. All lessons can be tailored to meet the varying learning needs of each class. There is a sensory room located within the Studio Tour for anyone who may require it – just ask a member of staff who will help you find your way.

For 2023, schools tickets will remain at a discounted rate on selected dates. Tickets otherwise cost £20 for a primary school student and £23 for a secondary school or college student, with free teacher tickets.

NEED TO KNOW!

1

See original props and costumes from the films up close during a free cross-curricular lesson in the art of filmmaking, subject to availability.

2

There are a limited number of school tickets available per day, which must be booked at least six weeks in advance, so please book early to avoid disappointment.

Call the Schools Booking Team on 0800 640 4750 to book early and secure your preferred date and time.

2

With so much to pack into one day, we can offer free teacher planning tickets to help you maximise your time at the Studio Tour.



KS 4

NEW KS4 CAREERS RESOURCES FROM THE NHS

CAREERS EDUCATION . FREE RESOURCES . HEALTHCARE

TAKE A LOOK!

Free KS4 careers resources from the NHS

STEP INTO THE 



Prepare your students for the world of work and help them step into the NHS with free careers resources for Key Stage 4. Offering five topic areas to choose from, the resources help students develop key careers skills and discover the wide range of NHS roles available.

Designed with accessibility in mind, the NHS' new KS4 cross-curricular resources have been peer reviewed by teachers and experts and conceived with flexibility at their core, enabling you to use them in their entirety, or adapt them to suit your students' needs.

Each topic area includes a range of careers- and PSHE-related activities that are easily linked to other subjects, including English, drama, citizenship and health and social care.

What's on offer?

The Key Stage 4 resources provide you with everything you'll need to deliver interactive and impactful lessons that will build your students' confidence. Each topic delivers a distinct set of learning outcomes, with support from teacher guidance, worksheets and slides.

The five topics covered are:

1. My interests, skills and future choices

Students reflect on their personal interests and choices, before identifying different skills

and matching these to various NHS careers.

2. Work-related skills

Explore the qualities and skills needed for a range of NHS roles via engaging skills activities and role play exercises.

3. Verbal / non-verbal communication

Learn how to prepare for an interview with the help of resources that include body language prompt cards and emotion wheels.

4. Helping young people deal with their problems

Students use factsheets to identify common issues faced by young people, and create an engaging campaign to help people deal with those issues.

5. Preparing for the world of work

Students learn effective writing techniques and receive tips on how to create the perfect CV for a specific job.



CONTACT


stepintothenhs.nhs.uk


0345 60 60 655



 SCAN ME

NEED TO KNOW!

1

The NHS KS4 resources allow students to discover more than 350 jobs in healthcare – from accounts assistant to paramedic – some of which may surprise you...

2

Topic four of the NHS KS4 resources provides students with factsheets to help identify common issues they may face, such as poor mental health and stress

3

The resources have been created with flexibility at their core, letting you pick which work best for you and your students

4

Our resources can help bring classroom learning to life for young people, enabling them to connect what they learn now with the careers they'll be pursuing in the future

The Diplomat™

Self-Service Loaning Lockers

With the NEW
Diplomat™ UV-C
Sanitisation Station



ClassBuddy™

Cost Effective Charging
Trolleys & Lockers



0800 130 3456



sales@lapsafe.com



lapsafe.com

LapSafe®

The future of science education is *Smart*.

Bring the power of *Oxford Smart* into your KS3 science classroom.

Oxford Smart Activate connects an evidence-led curriculum with resources, assessment, next steps, data and insights and CPD.

And what's more, you'll save time – with everything you need all in one place on Kerboodle, you can concentrate on empowering your students.

I'm spending more time doing, less time planning, and the student are finding the lessons much more engaging.

Science Teacher, Pioneer School
for *Oxford Smart* Activate

Activate



Want to know more?

Sign up to explore a free digital taster
www.oxfordsecondary.com/smartactivate



OXFORD
UNIVERSITY PRESS